

IT Essentials 5.0

10.2.1.9 Lab - Securing Accounts, Data, and the Computer in Windows XP

Print and complete this lab.

In this lab, you will explore how to secure accounts, data, and the computer in Windows XP.

Recommended Equipment

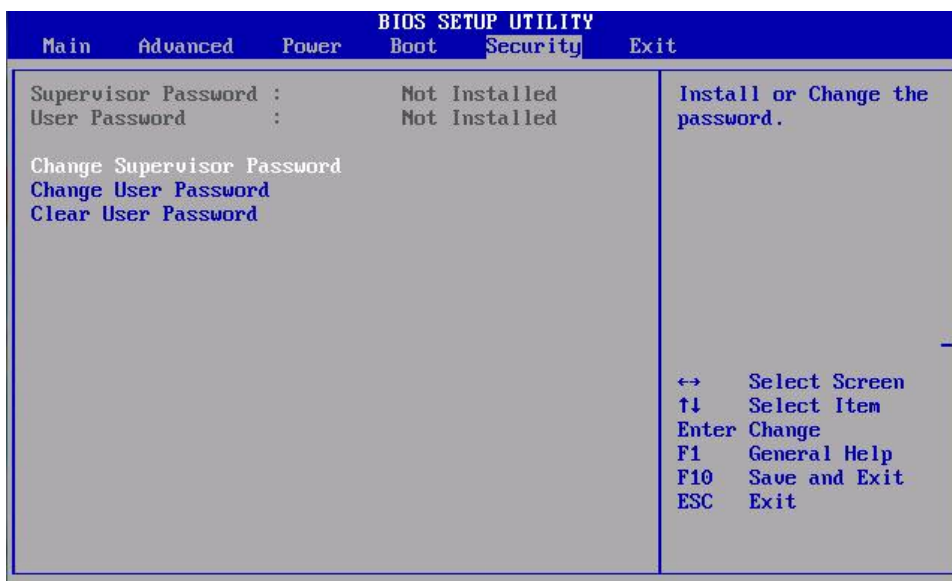
The following equipment is required for this exercise:

- A computer system running Windows XP is required for this exercise

Step 1

Boot the computer and enter the key(s) required to enter the “BIOS Setup Utility” window.

Note: Since there are several arrangements and features in different BIOSs, you may need to search for the features talked about in the lab. Also, if your BIOS does not support the feature talked about in the lab, move to the next feature.



Click the **Security** tab.

To set the User password:

Select **Change User Password** then press **Enter**.

Type the password **us3rIT** then press **Enter**.

To confirm the new password type **us3rIT** then press **Enter > OK**.

To set the Supervisor password:

Select **Change Supervisor Password** then press **Enter**.

Type the password **sup3IT** then press Enter.

To confirm the new password type **sup3IT** then press **Enter > OK**.

To set the User access level:

Select **User Access Level** then press **Enter**.

Select **No Access** then press **Enter**.

Select **Exit > Exit Saving Changes > OK**.

Step 2

When the computer restarts enter the key(s) required to enter the “BIOS Setup Utility” window.



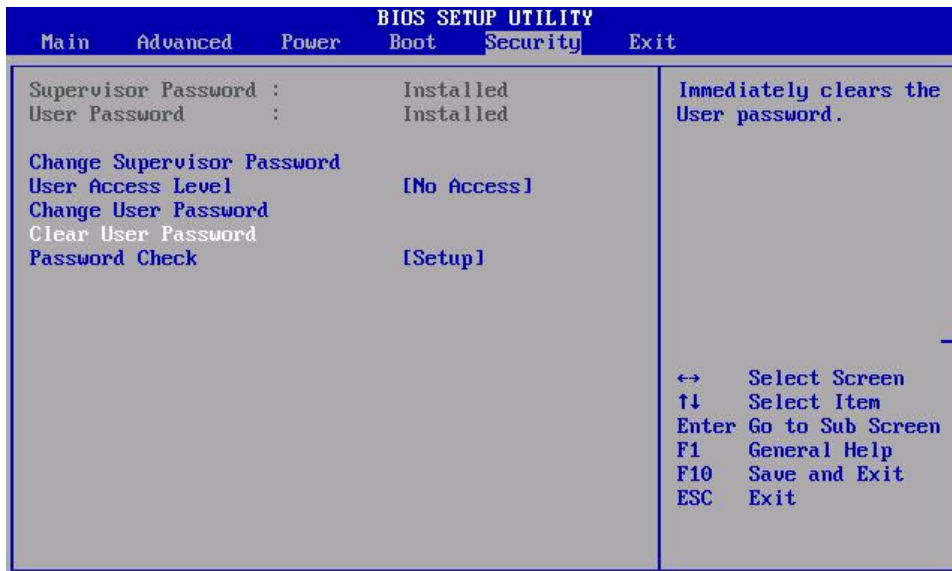
Enter the User password **us3rIT**.

Did you gain access to the BIOS?

Restarts the computer if needed, enter the key(s) required to enter the “BIOS Setup Utility” window.

Enter the Supervisor password **sup3IT**.

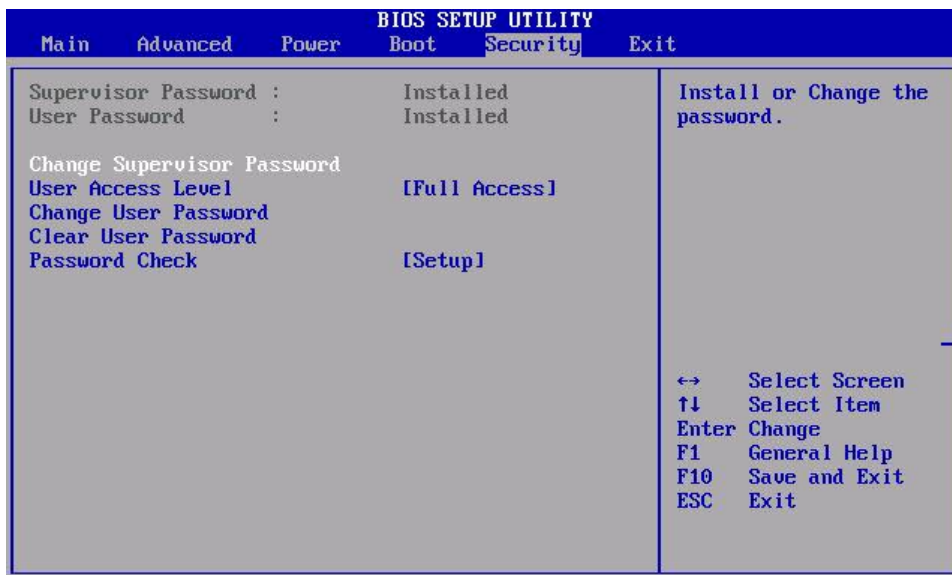
Did you gain access to the BIOS?



Click the **Security** tab.

To clear the User password:

Select **Clear User Password** then press **Enter > OK**.



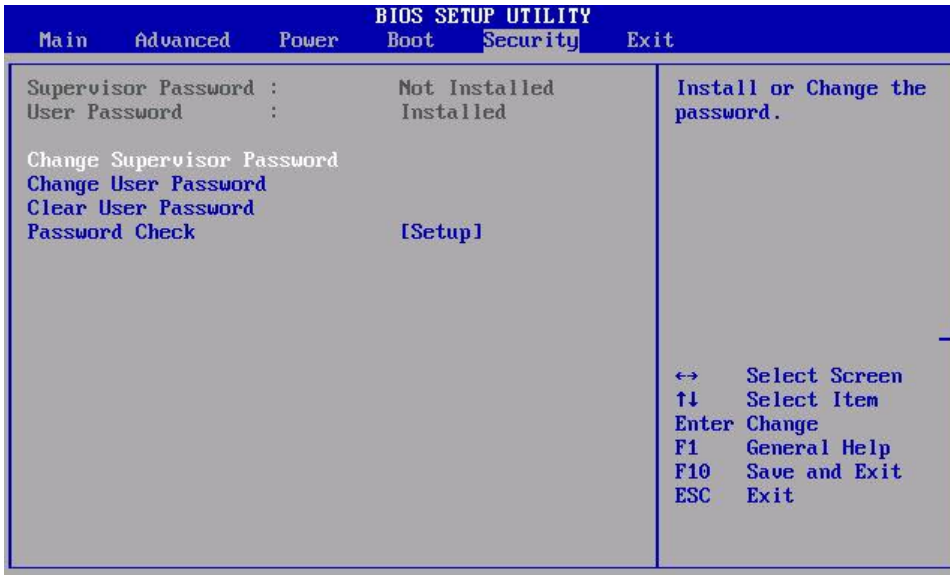
To remove the Supervisor password:

Select **Change Supervisor Password** then press **Enter > type sup3IT > Enter**.

For the new password press **Enter**.

What message appeared?

Press Enter for **OK**.



All passwords should now be removed.

Select **Exit > Exit Saving Changes > OK**.

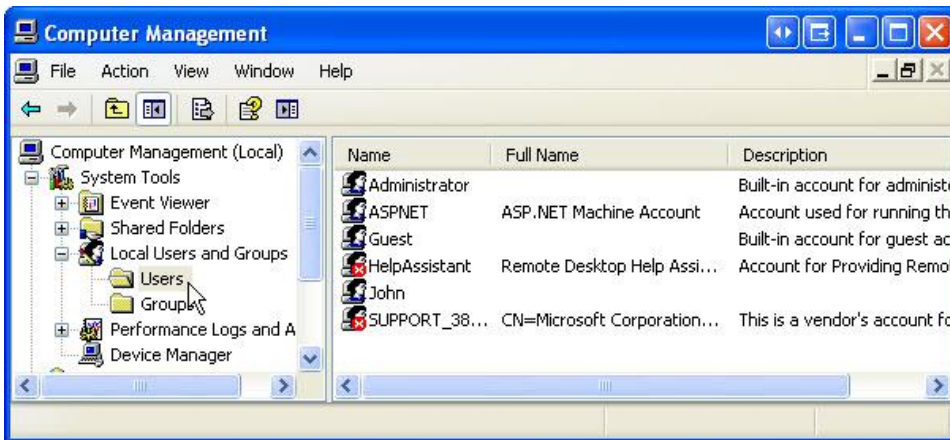
Step 3

Log on to the computer with the Administrator account.

Click **Start > My Computer > Local Disk (C:)**. Create a **New folder > name the folder No Access**.

Click **Start > Control Panel > Administrative Tools > Computer Management**.

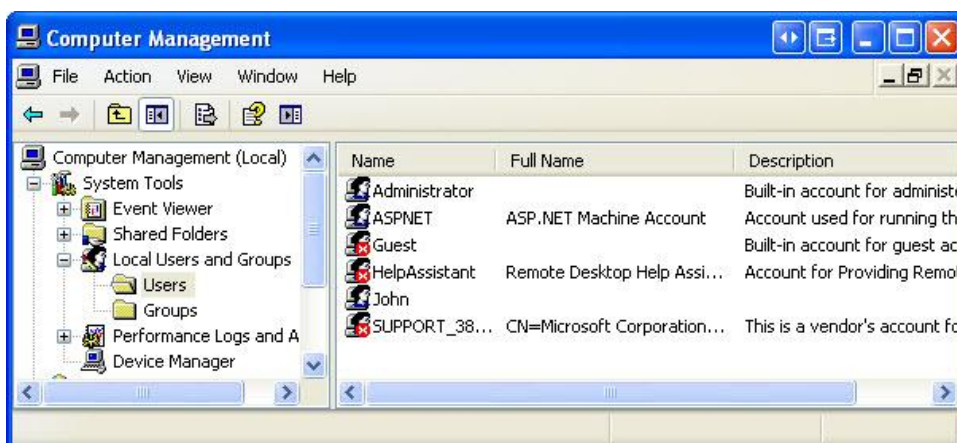
The "Computer Management" Window opens.



Expand the arrow next to **Local Users and Groups > select Users**.



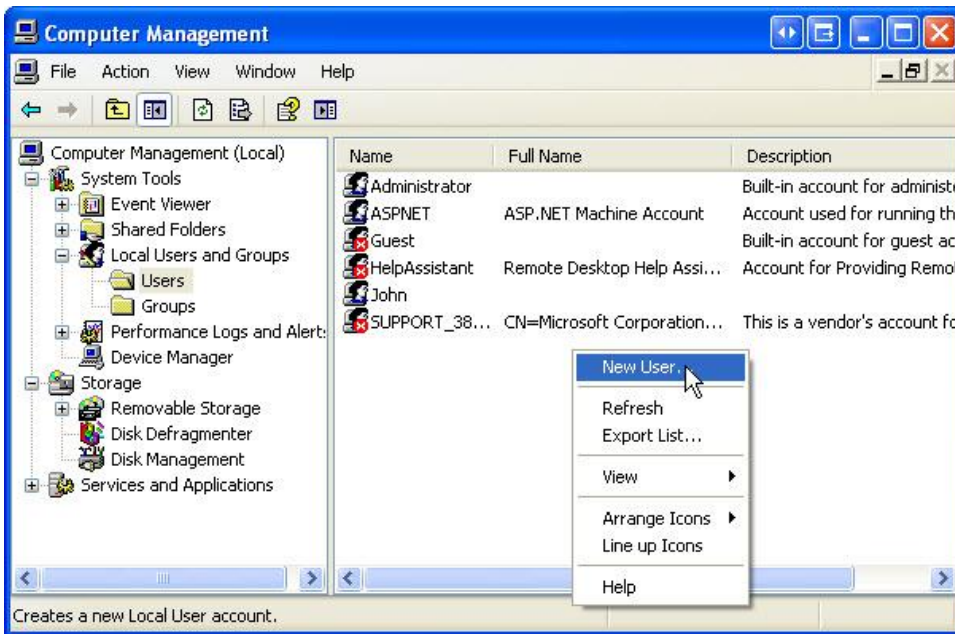
Right-click **Guest > Properties >** place a check mark next to **Account is disabled > OK.**



What do you notice about the Guest account icon?

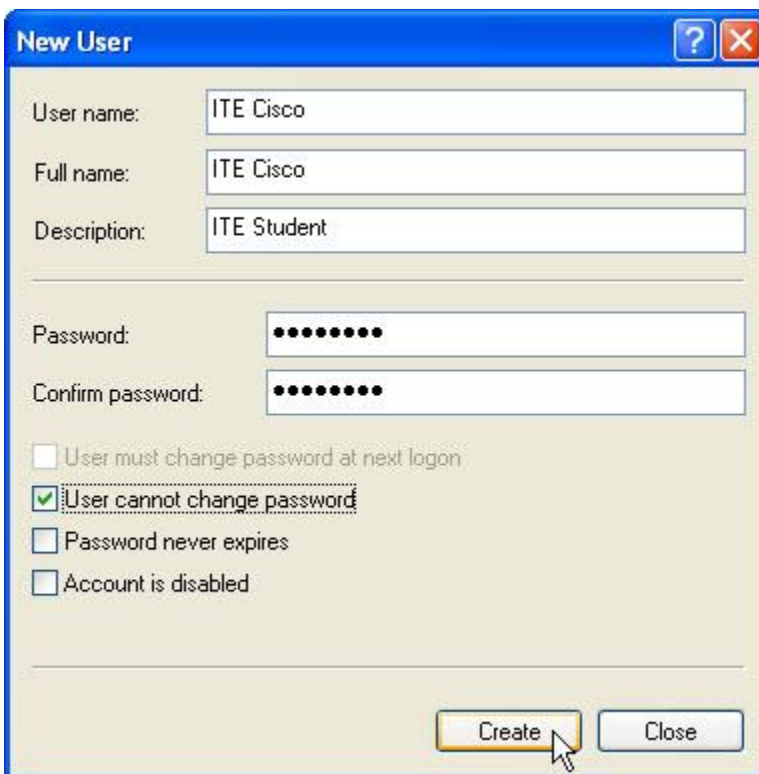
Step 4

Right-click in an open area in the middle panel of the "Computer Management" window.



Select **New User**.

The “New User” window opens.



Enter the following account information:

User name: **ITE Cisco**

Full name: **ITE Cisco**

Description: **ITE Student**

Password and Conform password: **Tc!15Kwz**

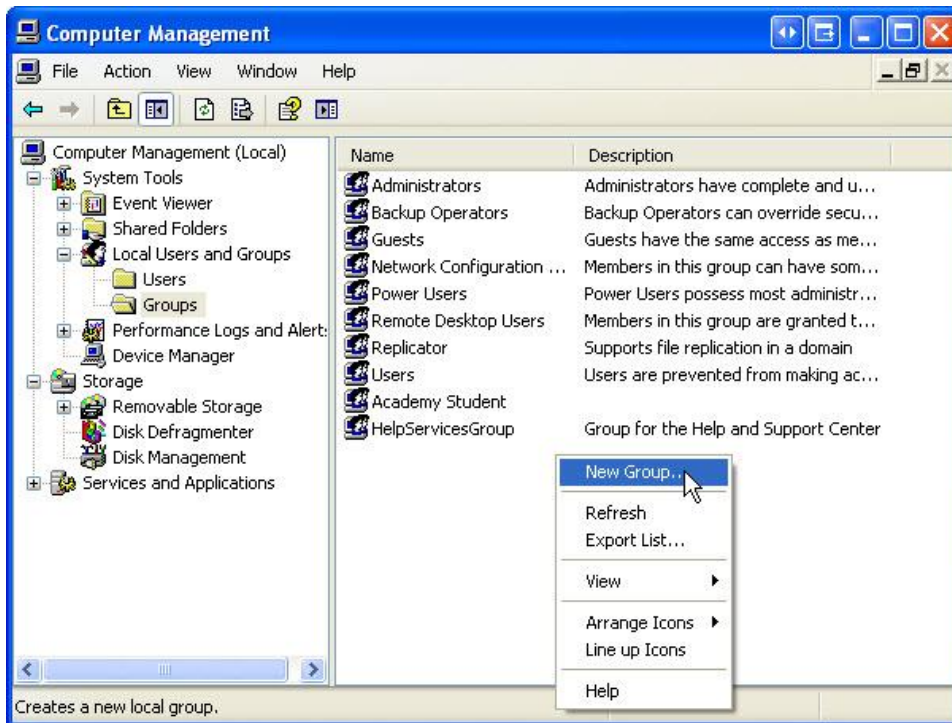
Remove the check mark next to **User must change password at the next logon.**

Place a check mark next to **User cannot change password.**

Click **Create > Close.**

Step 5

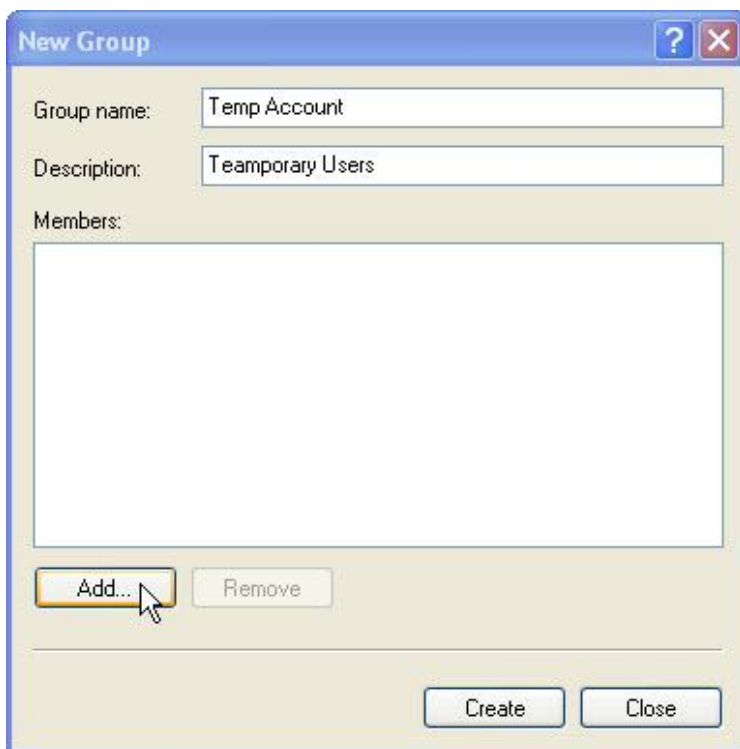
The “Computer Management” Window opens.



Expand the arrow next to **Local Users and Groups** > select **Groups**.

Right-click in an open area in the middle panel and select **New Group**.

The “New Group” window opens.



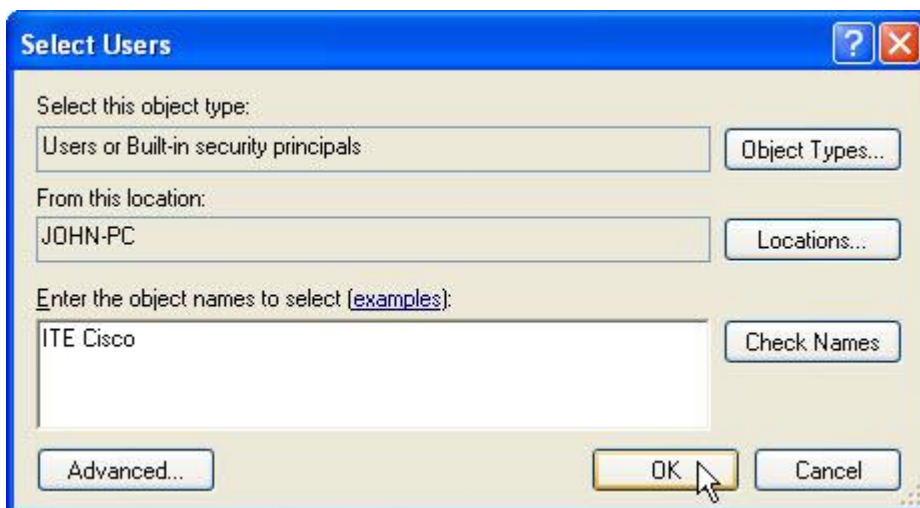
Enter the following information:

Group name: **Temp Account**

Description: **Temporary Users**

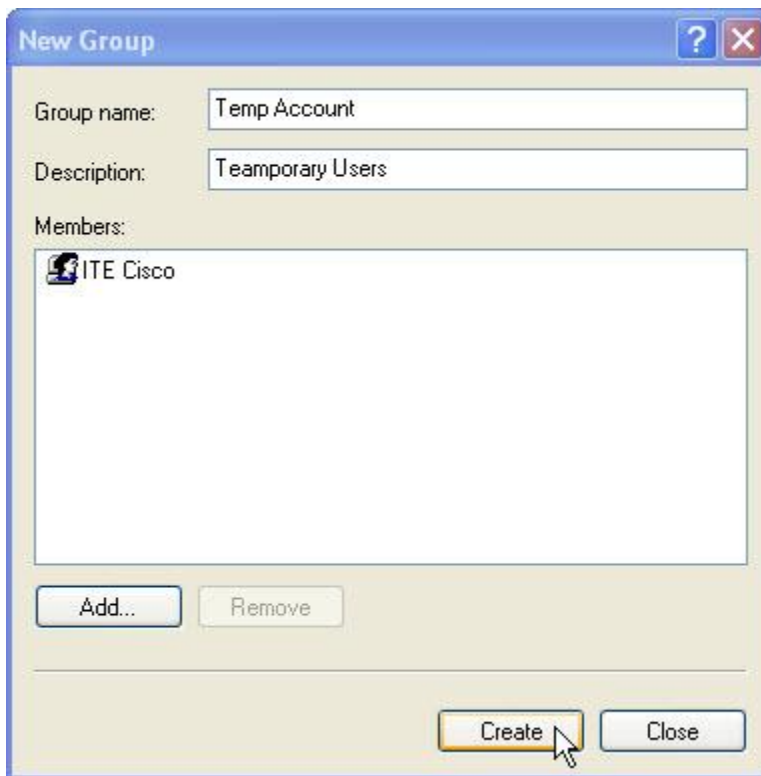
Click **Add**.

The “Select Users” window opens.



In the **Enter the object names to select** field type **ITE Cisco** > **OK**.

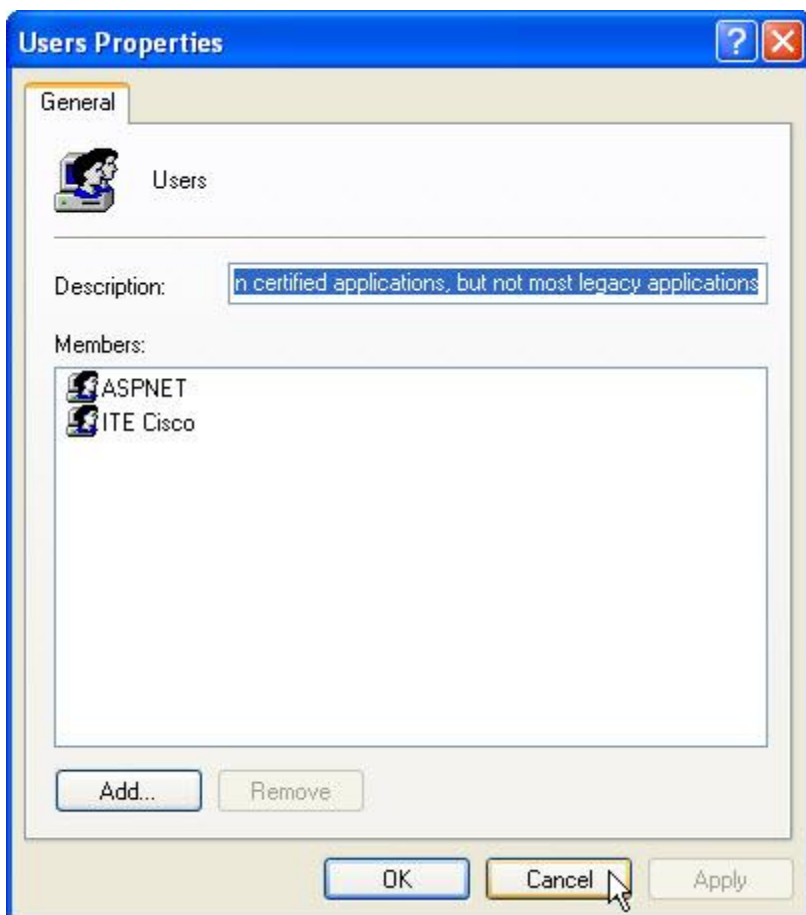
The “New Group” window opens.



Where has the ITE Cisco account been added to?

Click **Create** > **Close**.

Double-click the **Users** group.



Notice ITE Cisco was added by default to this group.

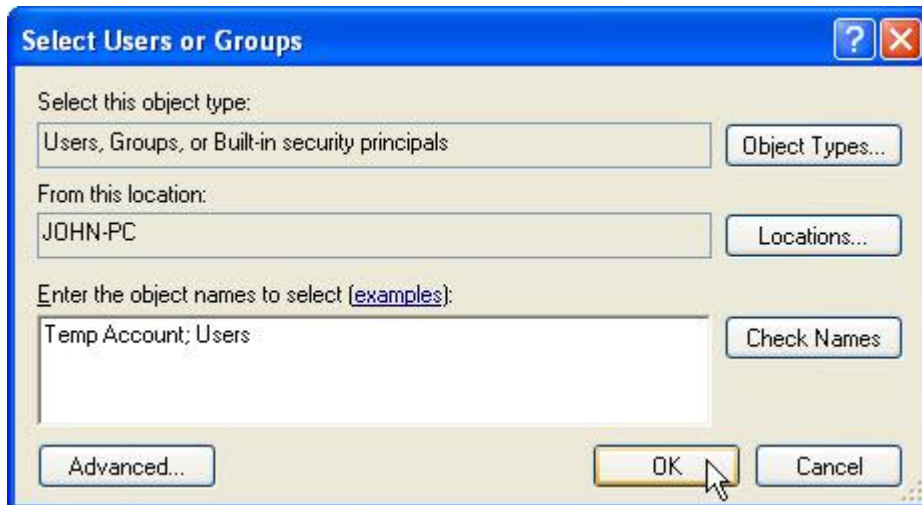
Click **Cancel** to close the window.

Close all open windows.

Step 6

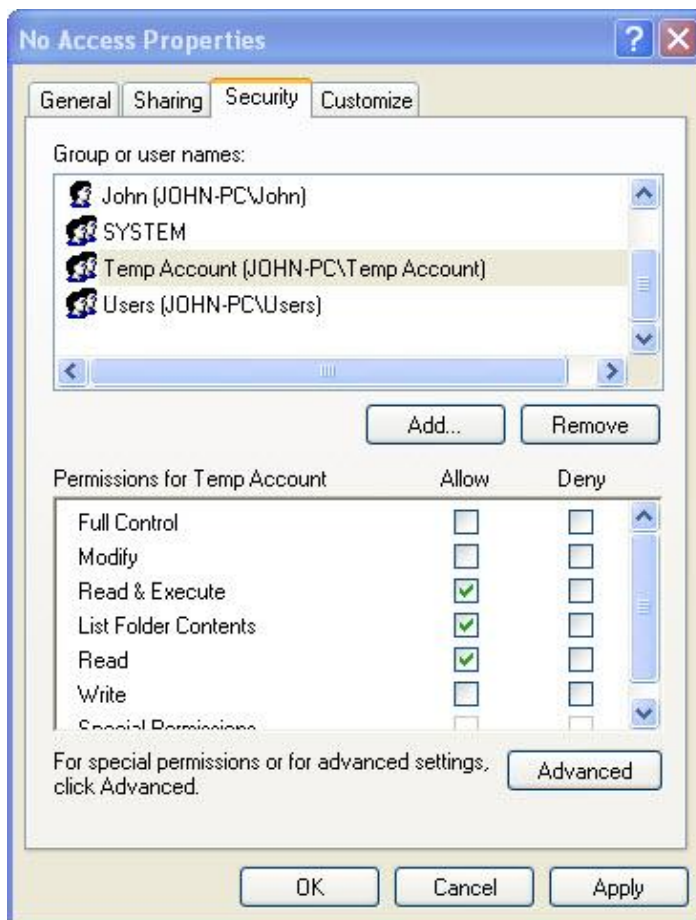
Navigate to and right-click the **No Access** folder > **Properties** > **Security** tab > **Add**.

The "Select Users or Groups" window opens.



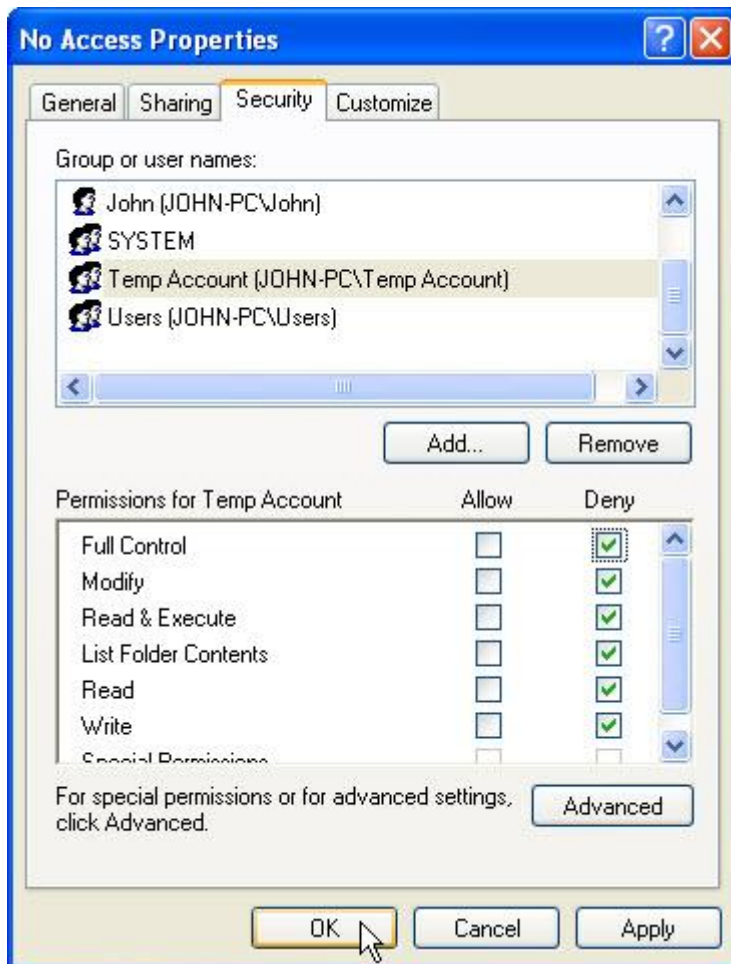
Type **Temp Account; Users** > **OK**.

The “No Access Properties” window opens.



What Permissions for Temp Account Group and Users Group are activated by default?

Select the **Temp Account** group.

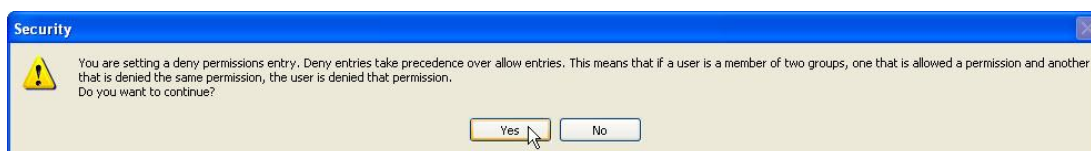


Select **Deny** for Full control.

What happens?

Click **OK**.

The "Windows Security" window opens.



What would happen if a member of the Temp Account group belonged to another group that was allowed access to the No Access folder?

Click **Yes**.

Close all open windows.

Step 7

Logoff the computer and logon as ITE Cisco

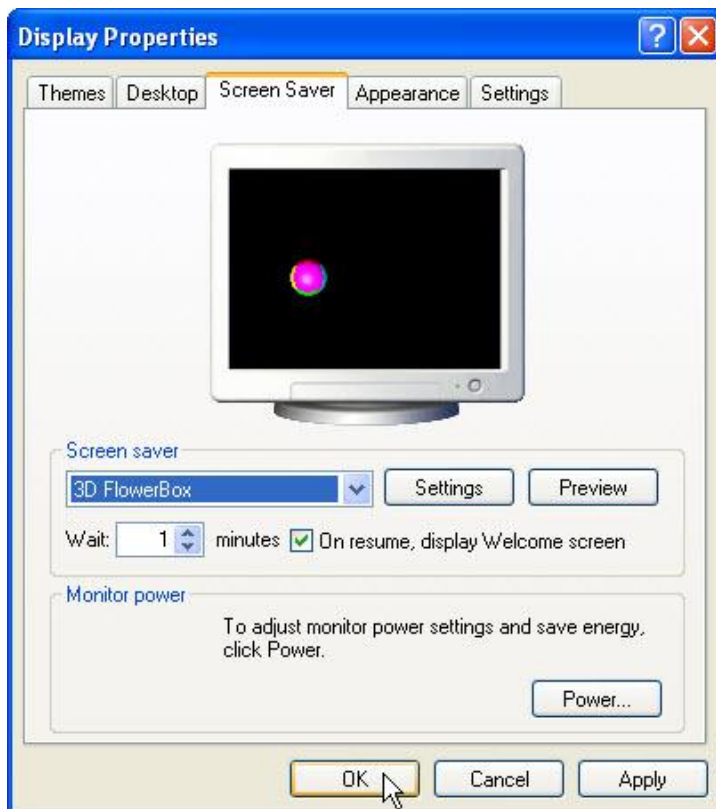
Click **Start > Computer > Local Disk (C:) > double-click No Access** folder.

Can you access the folder with the ITE Cisco account?

Close any open windows.

Step 8

Right-click on the **Desktop > Properties > Screen saver** tab.



Select a Screen saver from the drop-down list and place a check mark in the box for **On resume, display logon screen**.

Make sure Wait is set to 1 minute.

Click **OK**.

Wait one minute.

What happens?

Step 9

Navigate back to the "Screen Saver Settings" window.

Set the Screen saver to **(None)** and remove the check mark from **On resume, display logon screen** > **OK**.

Logoff the computer.

Logon to the computer as an Administrator.

Click **Start > Computer > Local Disk (C:)**. Right-click **No Access** folder > **Delete > Yes**.

Click **Start > Control Panel > Administrative Tools > Computer Management** > expand the arrow next to **Local Users and Groups**.

Select **Users** > right-click **ITE Cisco** > **Delete > Yes**.

Right-click **Guest** account > **Properties** > remove check mark from **Account is disabled** > **OK**.

Select **Groups** > right-click **Temp Account** > **Delete > Yes**.