

IT Essentials 5.0

5.2.1.5 Lab - Install Windows 7

Introduction

Print and complete this lab.

In this lab, you will install the Windows 7 operating system.

Recommended Equipment

The following equipment is required for this exercise:

- A computer with a blank hard disk drive.
- Windows 7 installation DVD or USB flash drive.

Step 1

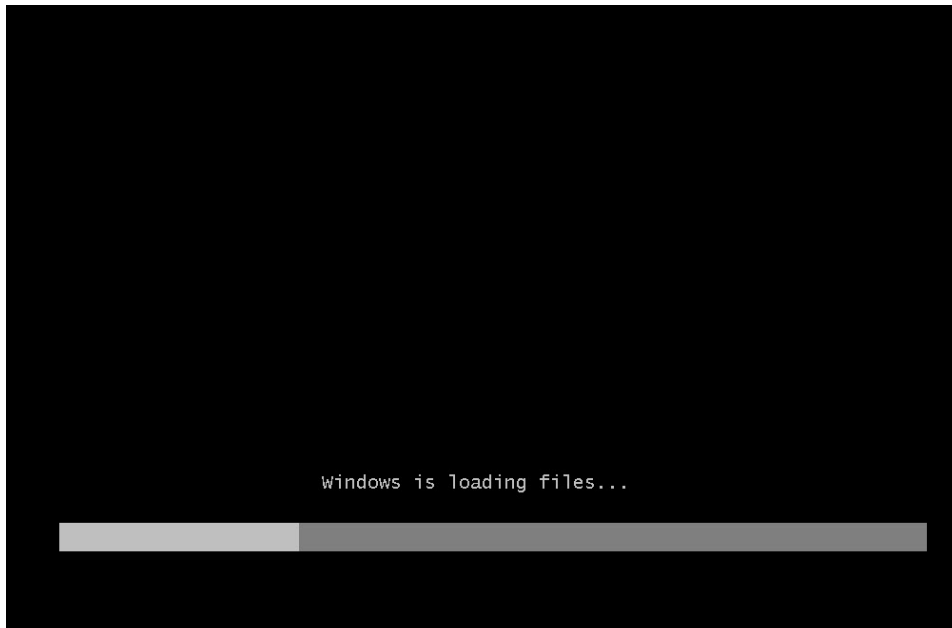
Insert the Windows 7 installation DVD into the DVD-ROM drive or plug the USB flash drive into a USB port.

When the system starts up, watch for the message “Press any key to boot from CD or DVD.”.

If the message appears, press any key on the keyboard to boot the system from the DVD. If the press any key message does not appear, the computer automatically starts loading files from the DVD.



The computer starts loading files from the DVD or USB flash drive.



Step 2

The "Windows 7 boot" screen appears.



Step 3

The “Install Windows” window opens. Press **Next** unless you need to change the default settings.



Step 4

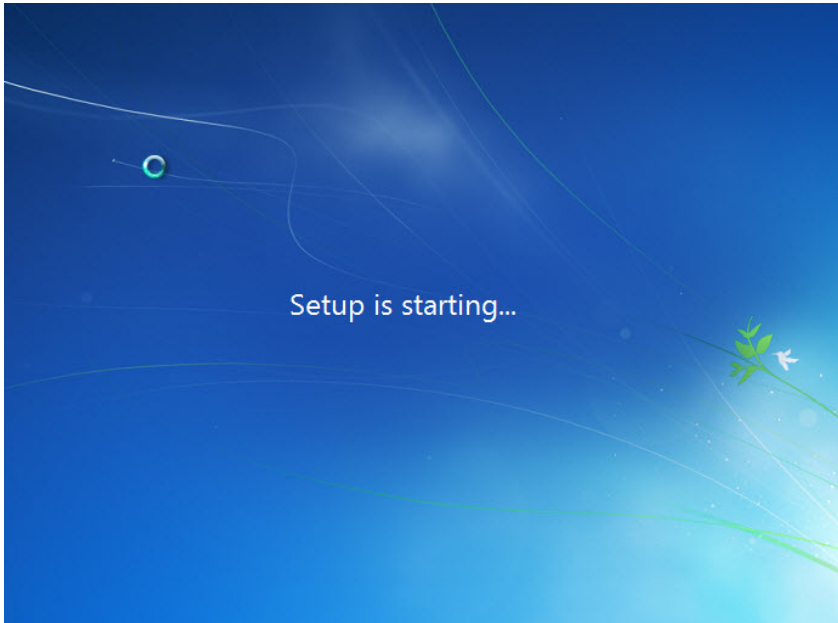
Press **Install now** to continue.



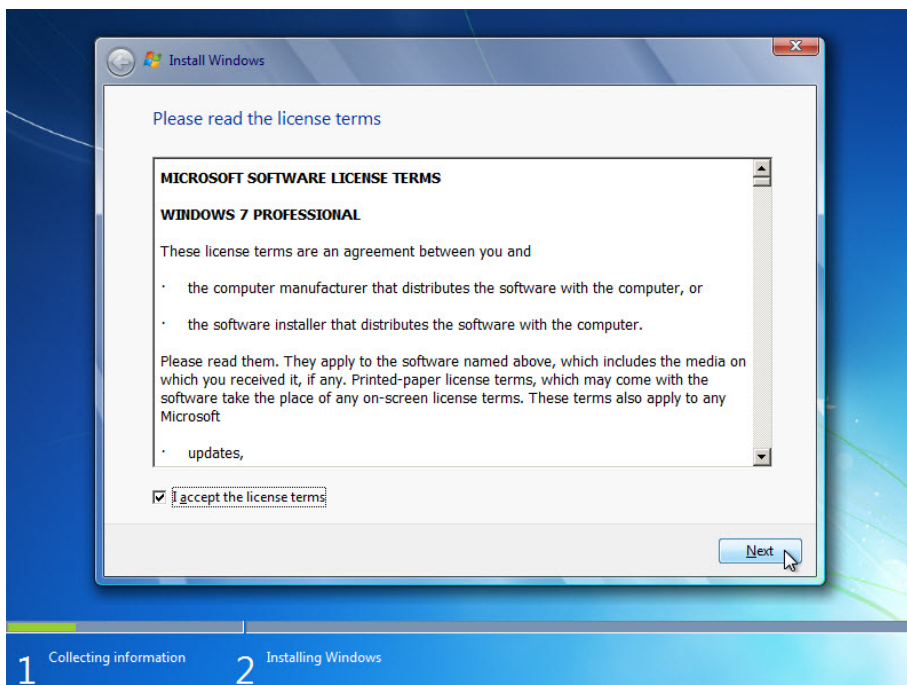
Step 5

The Collecting information section of the installation begins.

The “Setup is starting...” screen appears.

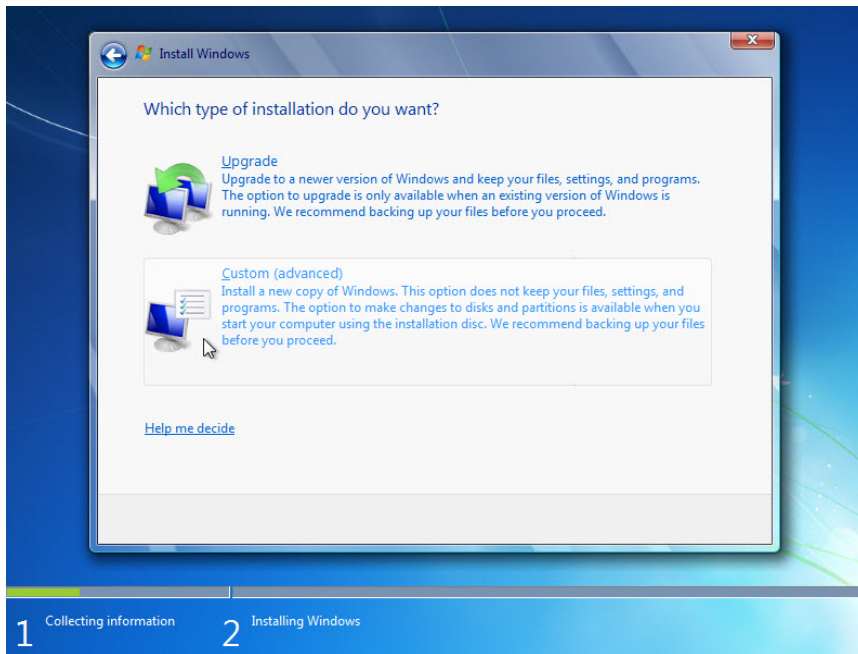


Next the “Please read the license terms” screen appears. Read and confirm that you accept the license by selecting the box “I accept the license terms”. Click **Next**.



Step 6

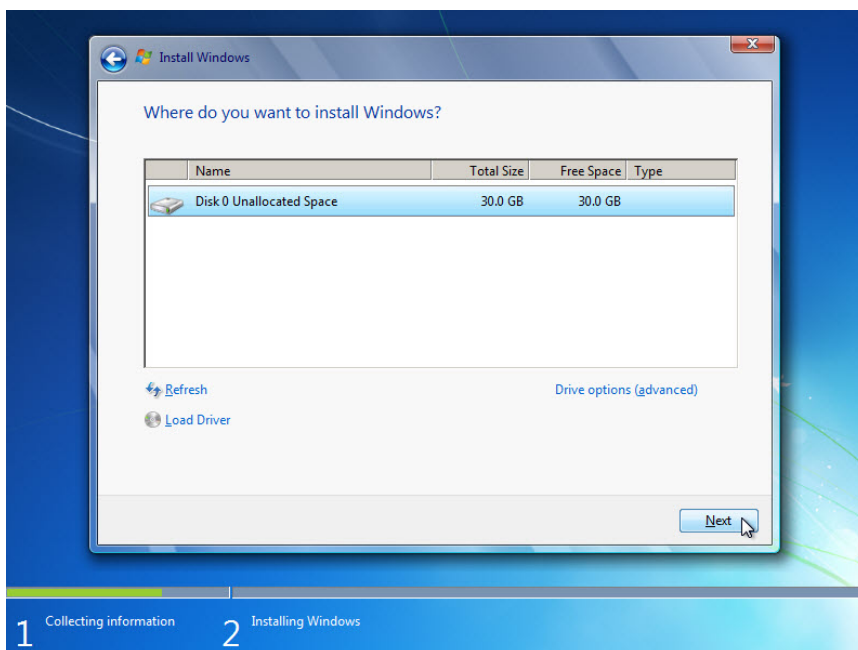
The “Which type of installation do you want?” screen appears. Click **Custom (advanced)**.



Step 7

The “Where do you want to install Windows?” screen appears. Select the hard drive or partition on which Windows 7 will be installed.

Click **Next** to select “Disk 0 Unallocated Space”, which is the default setting.

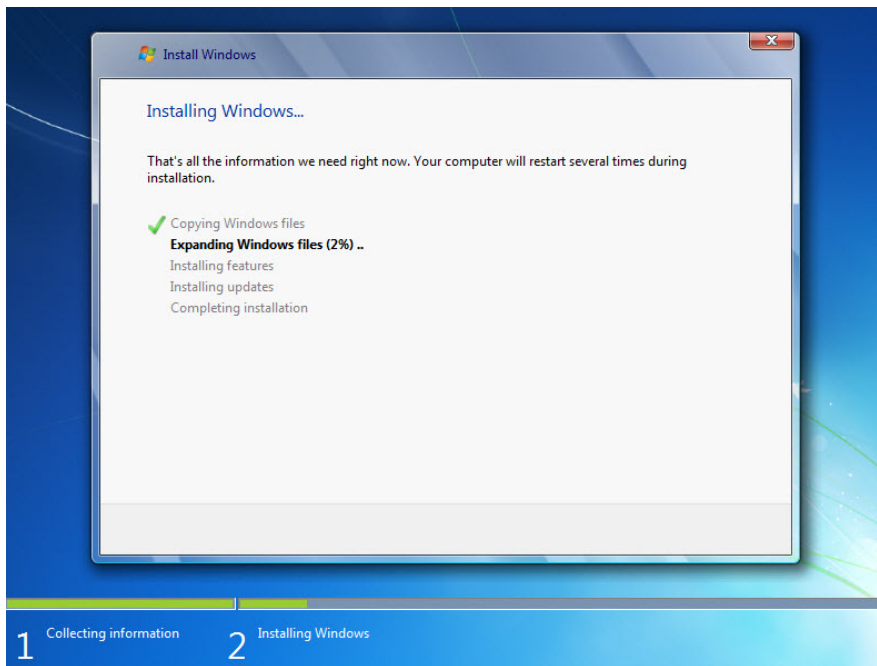


The Collecting information section of the installation ends.

Step 8

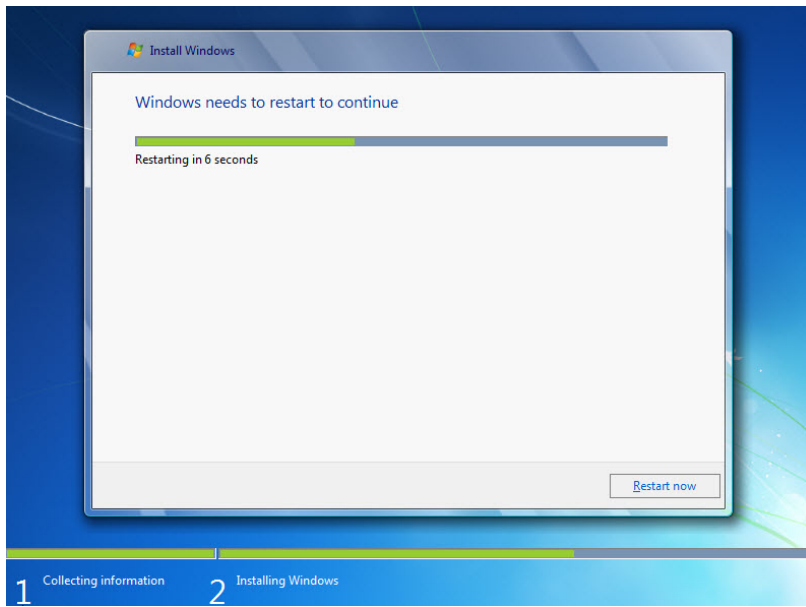
The Installing Windows section begins.

The “Installing Windows...” screen appears. Windows 7 Setup may take up to 50 minutes to configure your computer.

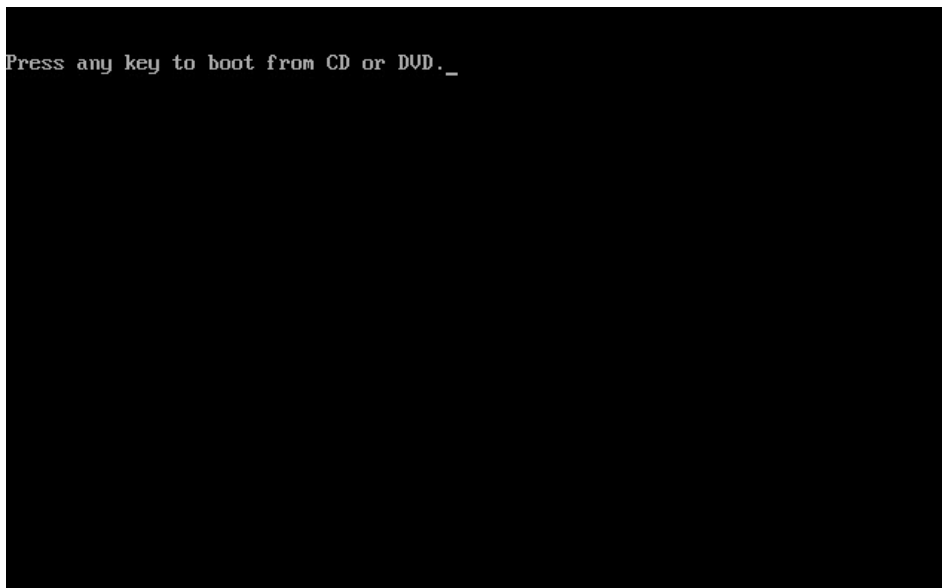


Step 9

The “Windows needs to restart to continue” screen appears. Your computer will automatically restart or you can click **Restart now**.



If you get the message “Press any key to boot from CD or DVD.”, **do not press any key** and Windows will boot from the hard disk to continue the installation.



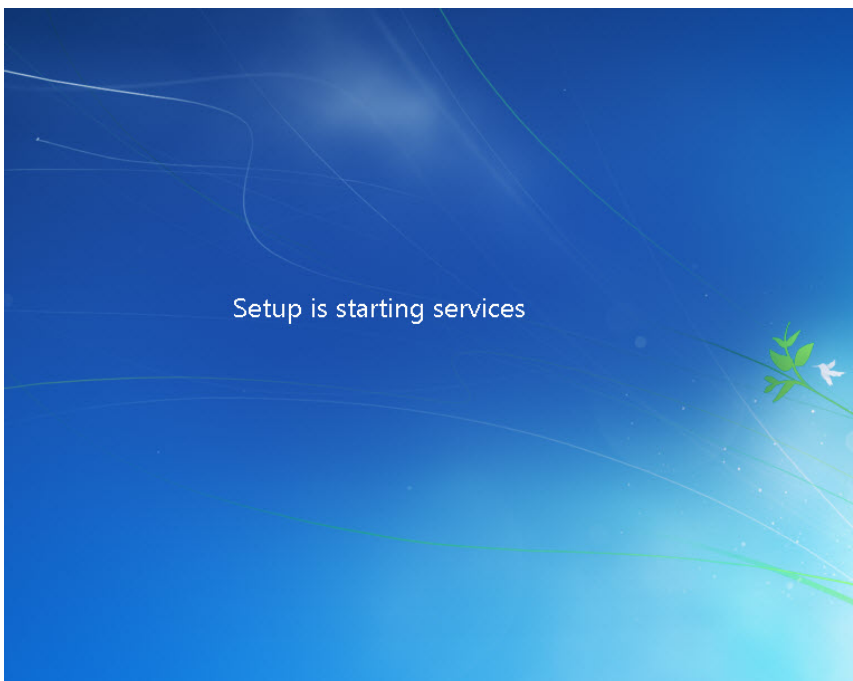
Step 10

The “Setup is updating registry settings” message appears.



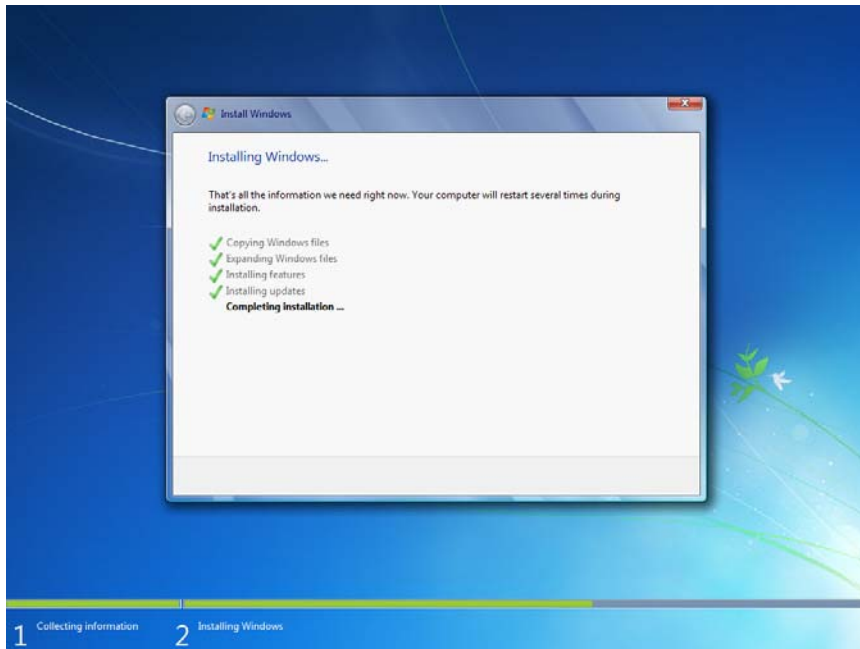
Step 11

The "Setup is starting services" message appears.



Step 12

The “Installing Windows...” screen appears again. Windows may reboot a few more times. This may take several minutes.

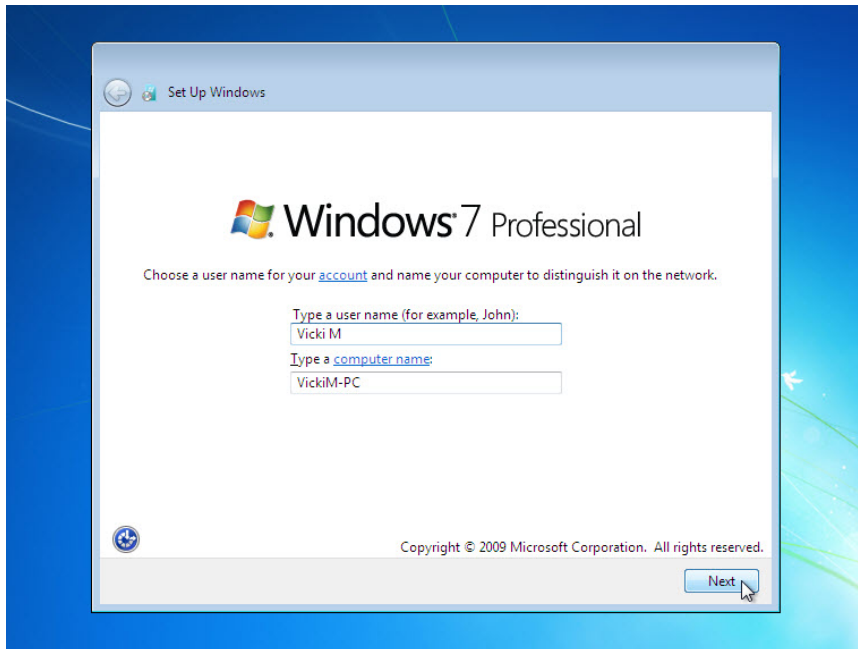


The Installing Windows section of the installation is completed.

Step 13

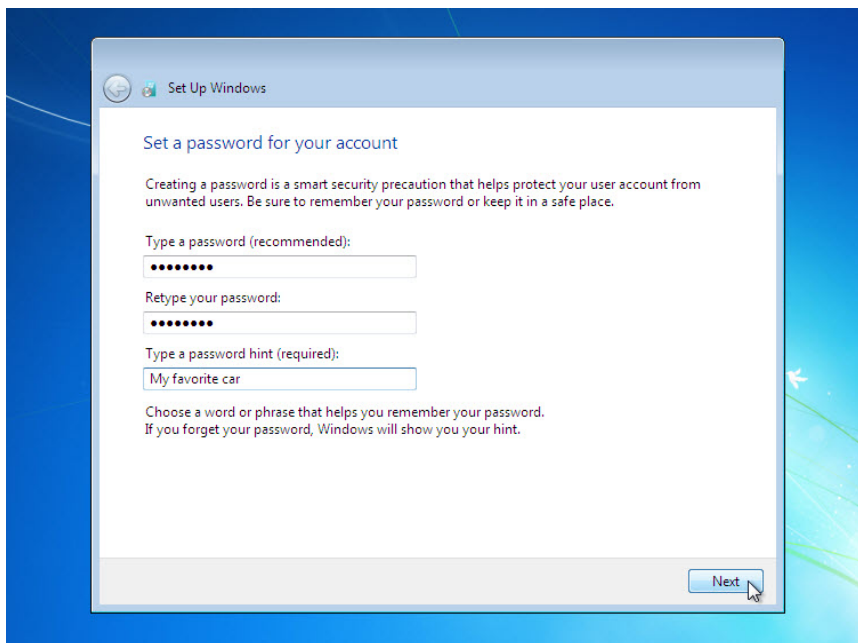
The “Set Up Windows” section begins.

Type the user name and computer name provided by your instructor. Click **Next**.



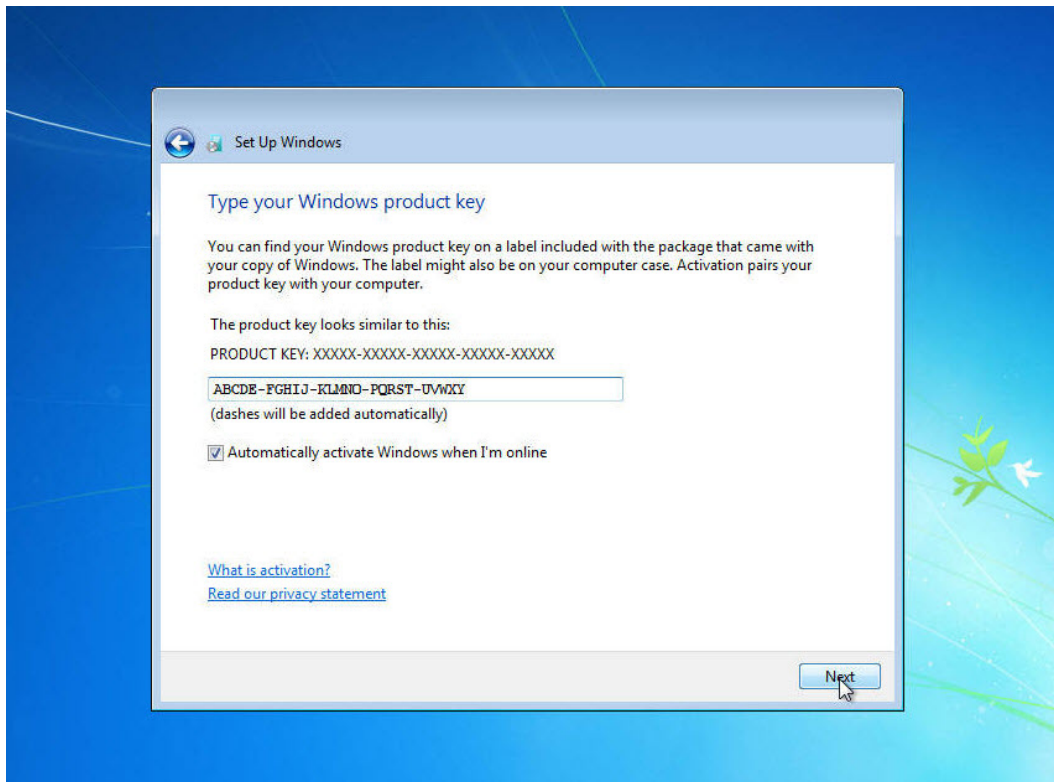
Step 14

The “Set a password for your account” screen appears. Type the password provided by your instructor. Retype the password and enter the password hint. Click **Next**.



Step 15

The “Type your Windows product key” screen appears. On this page, type your product key as it appears on your Windows 7 DVD case. Click **Next**.

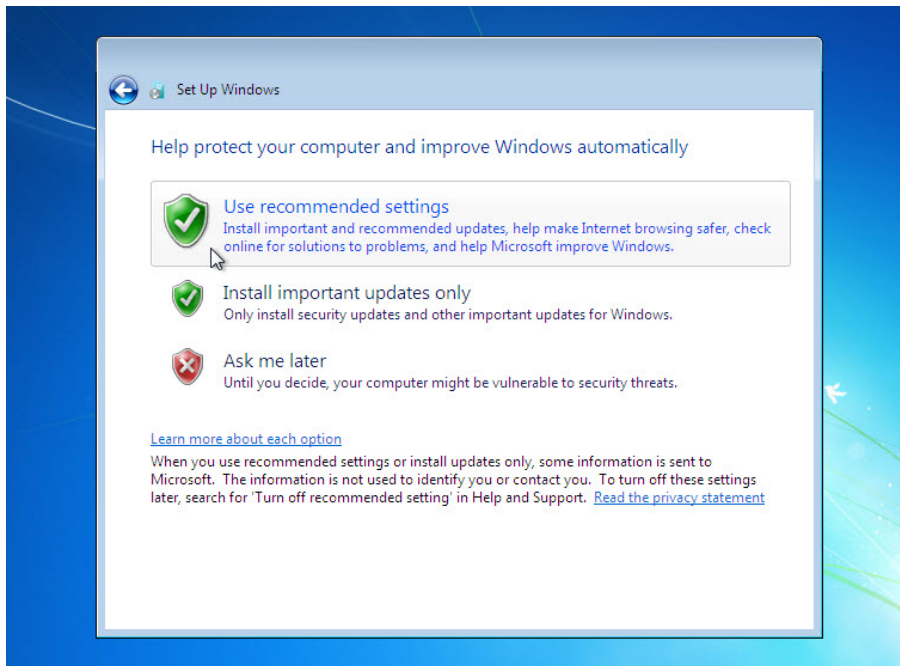


Note: If you entered your product key, Setup will not ask you the following:

“Do you want to enter your product key now?” screen appears. If you were instructed not to enter a product key, click **No**.

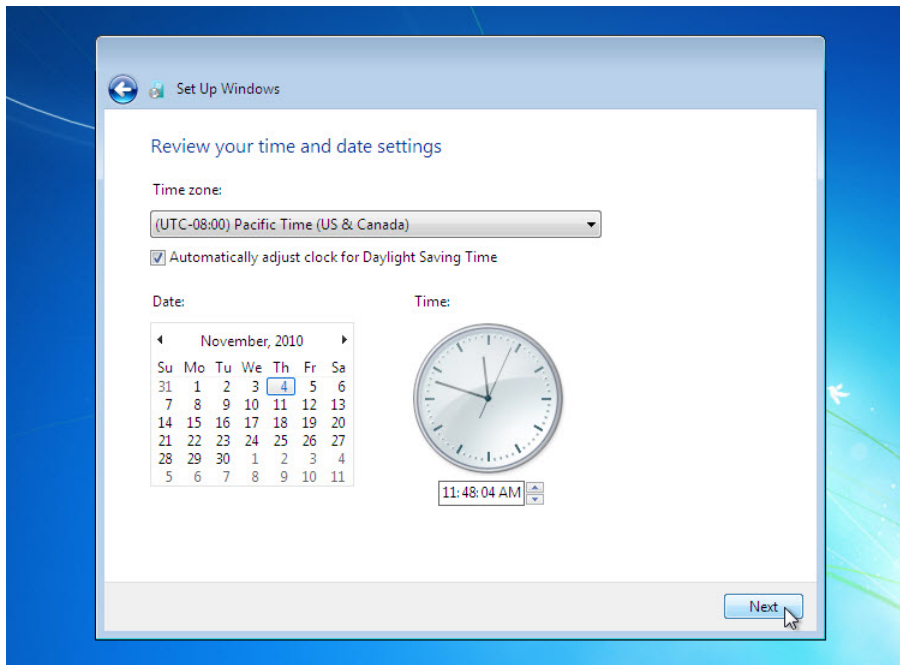
Step 16

On the “Help protect your computer and improve Windows automatically” screen, click **Use recommended settings**.



Step 17

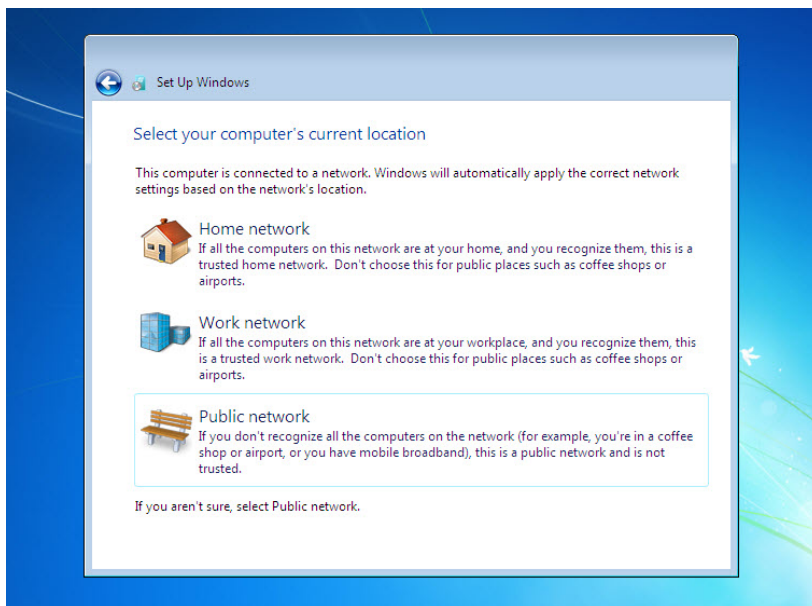
On the “Review your time and date settings” screen, configure the computer clock to match your local date, time, and time zone. Click **Next**.



Step 18

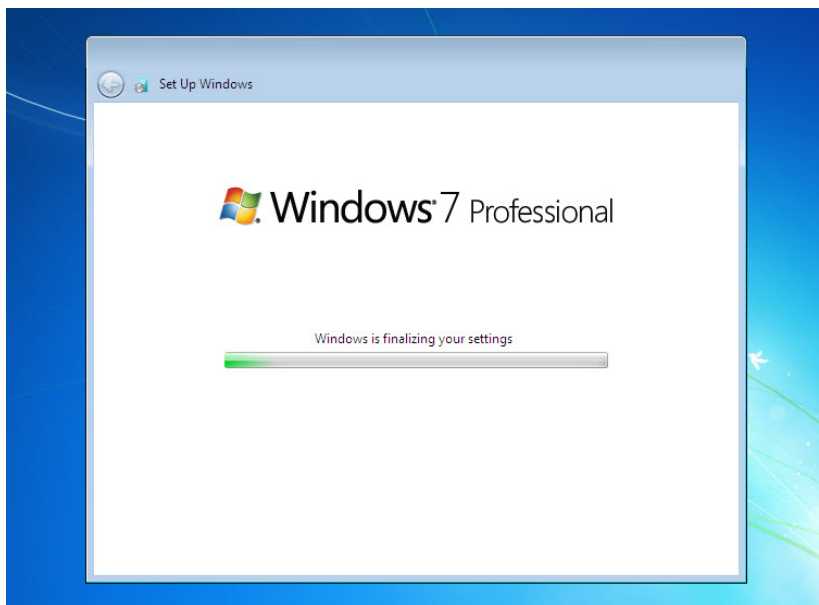
The “Select your computer’s current location” screen appears. Select the option provided by your instructor.

Note: This screen will not show up if the installation did not correctly install drivers for the network card.



Step 19

The "Windows is finalizing your settings" screen appears.



The "Set Up Windows" section is completed.

Step 20

The “Welcome” message appears.

**Step 21**

The “Preparing your desktop...” message appears.



Step 22

You are logged in to Windows 7 for the first time.

