

## IT Essentials 5.0

### 5.2.1.6 Lab - Install Windows Vista

#### Introduction

Print and complete this lab.

In this lab, you will install the Windows Vista operating system.

#### Recommended Equipment

The following equipment is required for this exercise:

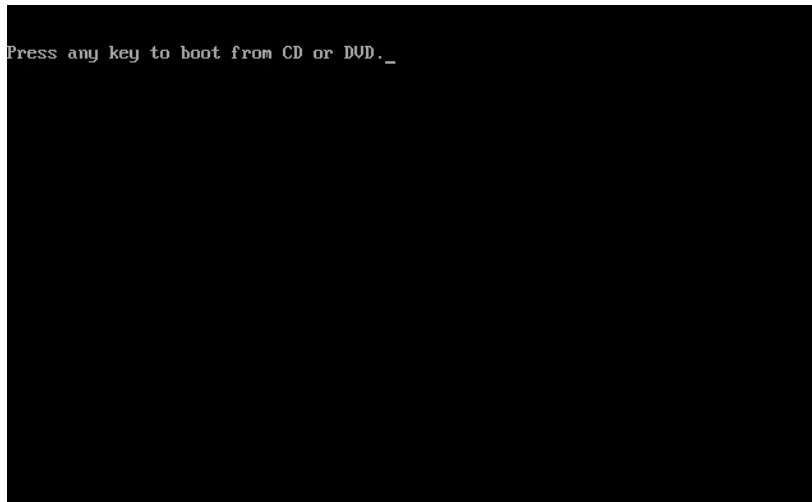
- A computer with a blank hard disk drive.
- Windows Vista installation DVD or USB flash drive.

#### Step 1

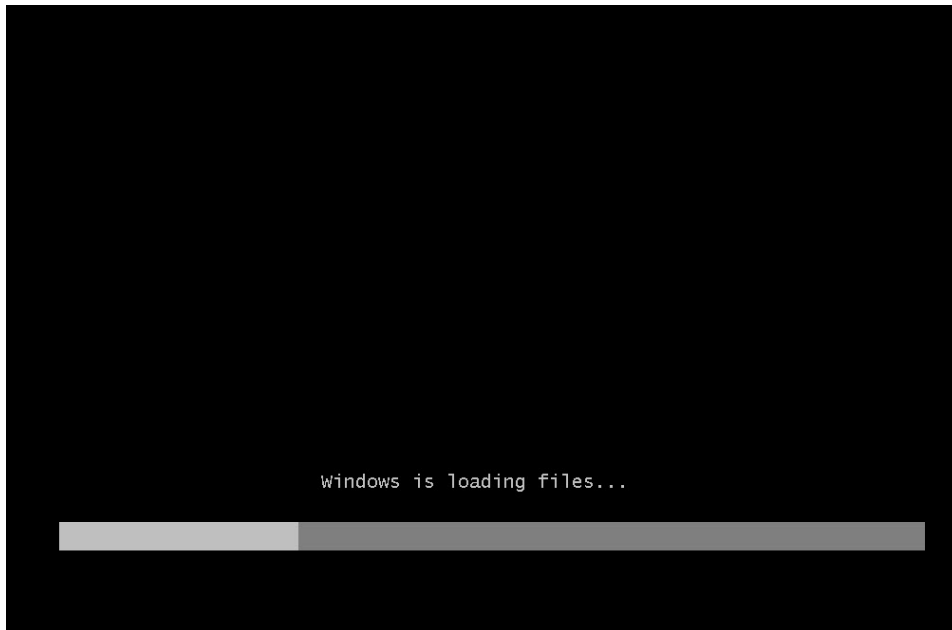
Insert the Windows Vista installation DVD into the DVD-ROM drive or plug the USB flash drive into a USB port.

When the system starts up, watch for the message "Press any key to boot from CD or DVD.".

If the message appears, press any key on the keyboard to boot the system from the DVD. If the press any key message does not appear, the computer automatically starts loading files from the DVD.

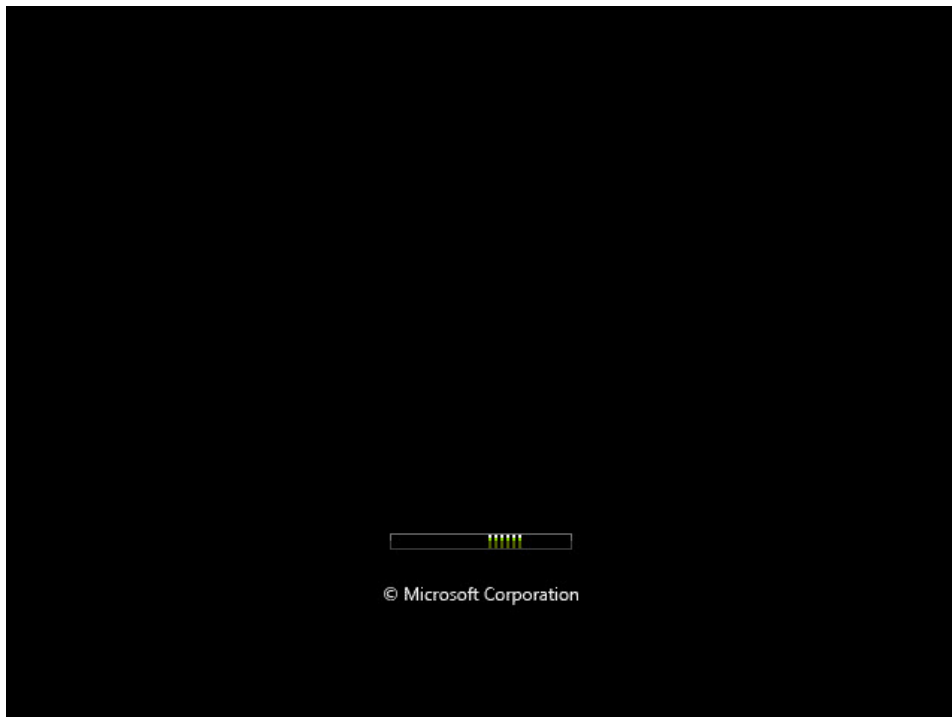


The computer starts loading files from the DVD or USB flash drive.



## Step 2

The Windows Vista boot screen appears.



## Step 3

The "Install Windows" window opens. Press **Next** unless you need to change the default settings.



#### Step 4

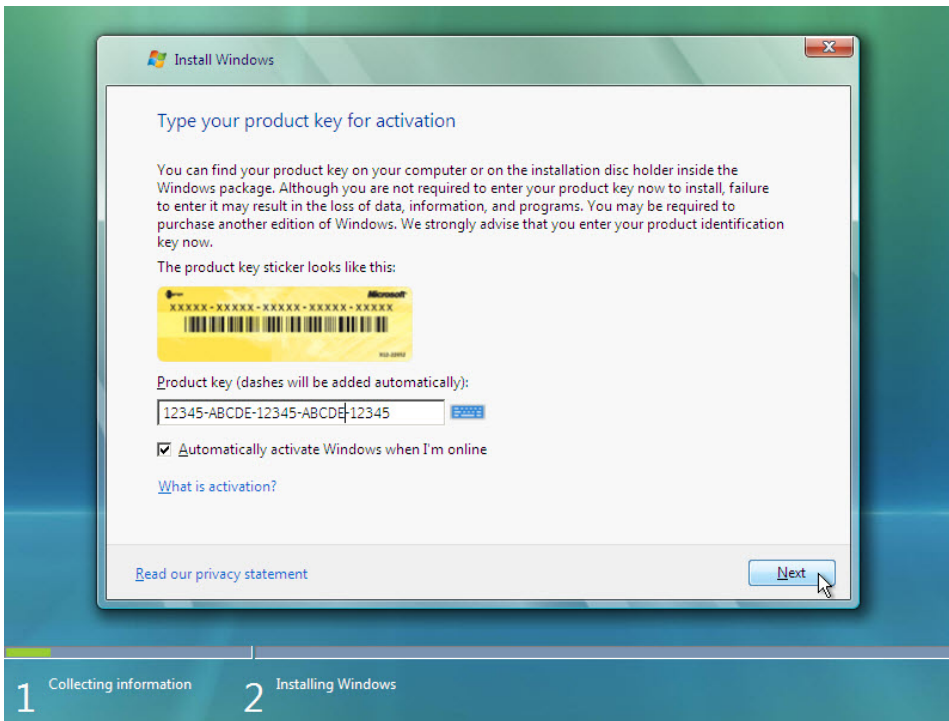
Press **Install now** to continue.



#### Step 5

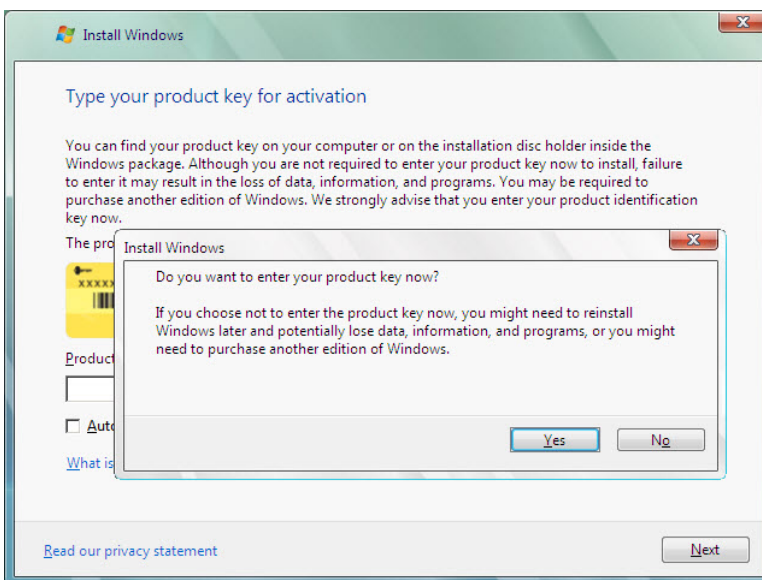
The Collecting information section of the installation begins.

The “Type your product key for activation” screen appears. On this page, type your product key as it appears on your Windows Vista DVD case. Click **Next**.



Note: If you entered your product key, Setup will determine the Vista product edition to install and will not display the next two screens.

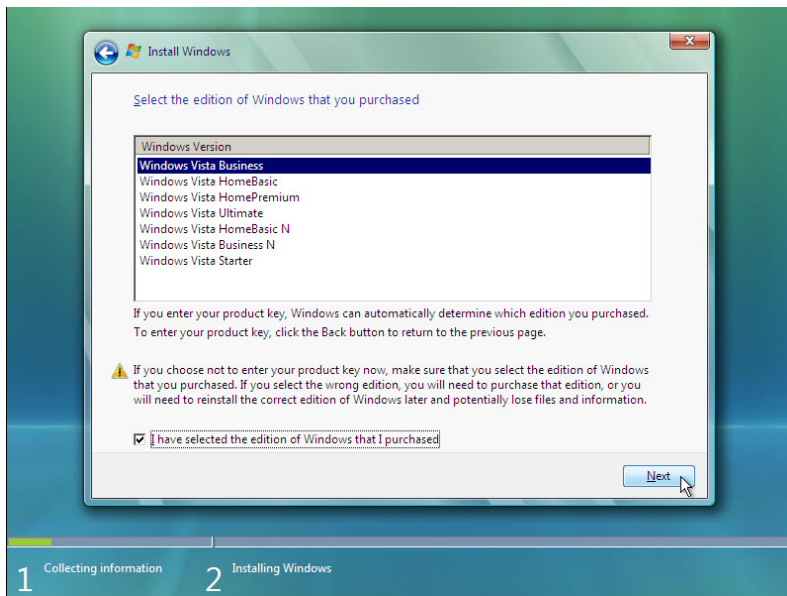
Because you have left the product key field blank, the “Do you want to enter your product key now?” window appears. If you were instructed not to enter a product key, click **No**.



Setup now prompts you to select the Vista version you purchased. In general, you should choose the version you purchased, but note that you can install any Vista version listed and experiment with it for a limited time before product activation requires you to activate the version you purchased.

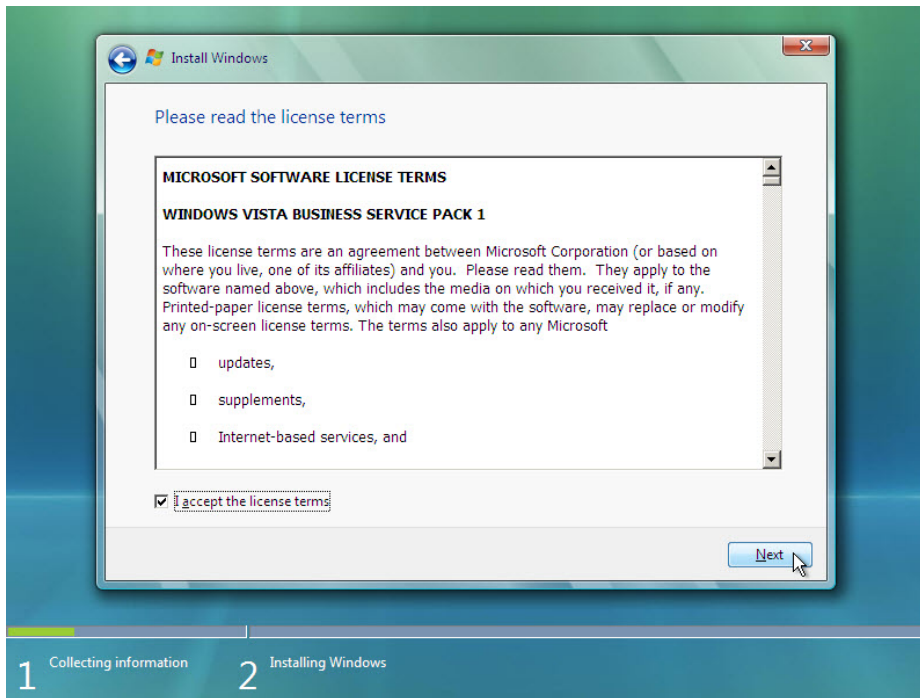
**Note:** Your product key will only activate the version of Vista you purchased.

Select the Windows Vista version that will be installed, check the item title "I have selected the edition of Windows that I purchased," and then click **Next**.



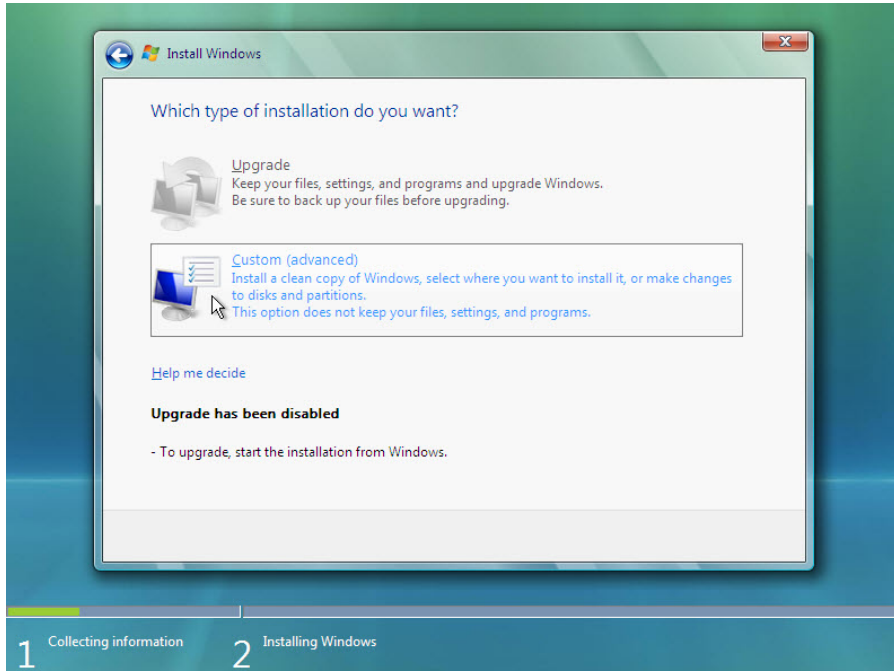
## Step 6

The "Please read the license terms" screen appears. Read and confirm that you accept the license by selecting the box "I accept the license terms". Click **Next**.



## Step 7

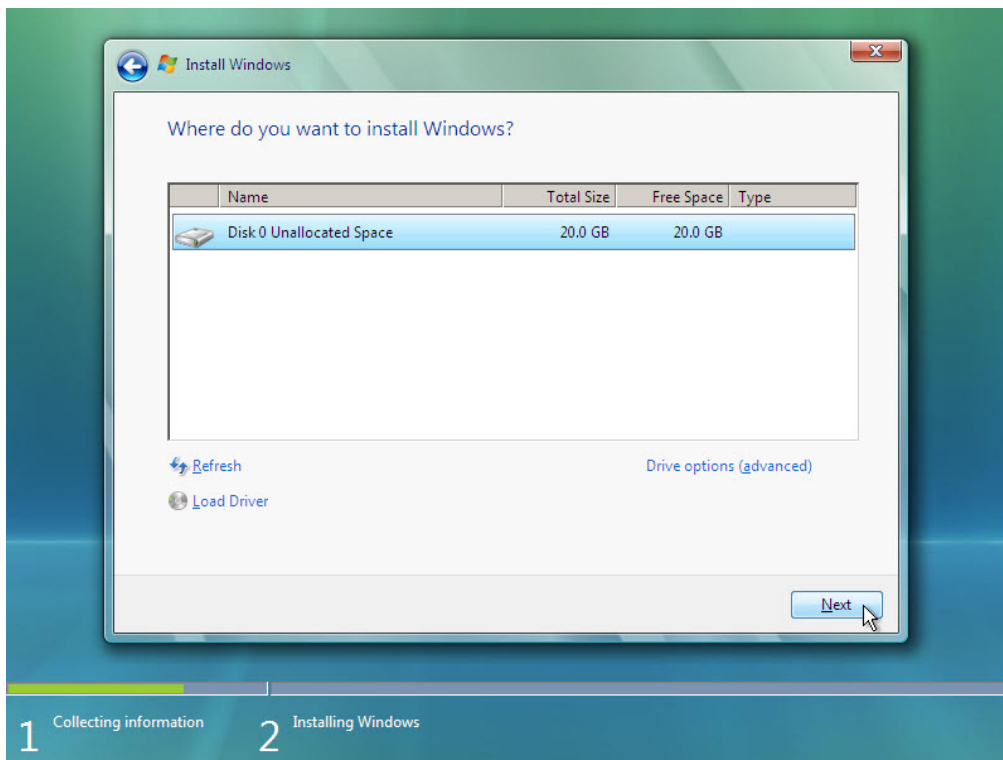
The “Which type of installation do you want?” screen appears. Click **Custom (advanced)**.



## Step 8

The “Where do you want to install Windows?” screen appears. Select the hard drive or partition on which Windows Vista will be installed.

Click **Next** to select “Disk 0 Unallocated Space”, which is the default setting.

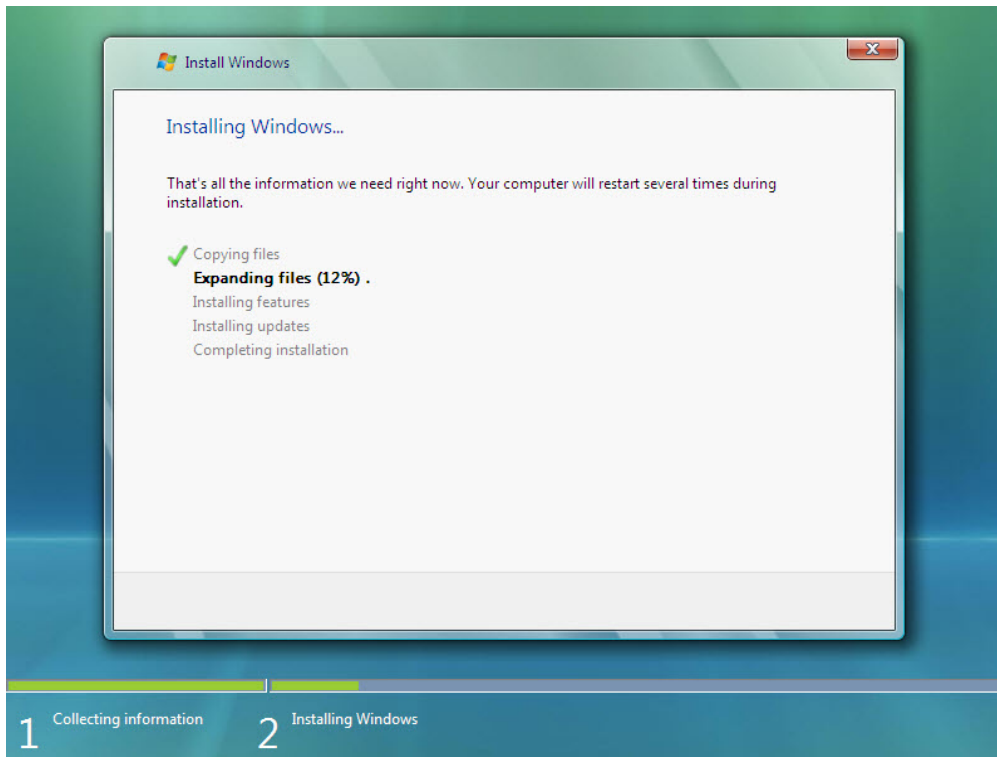


The Collecting information section of the installation ends.

## Step 9

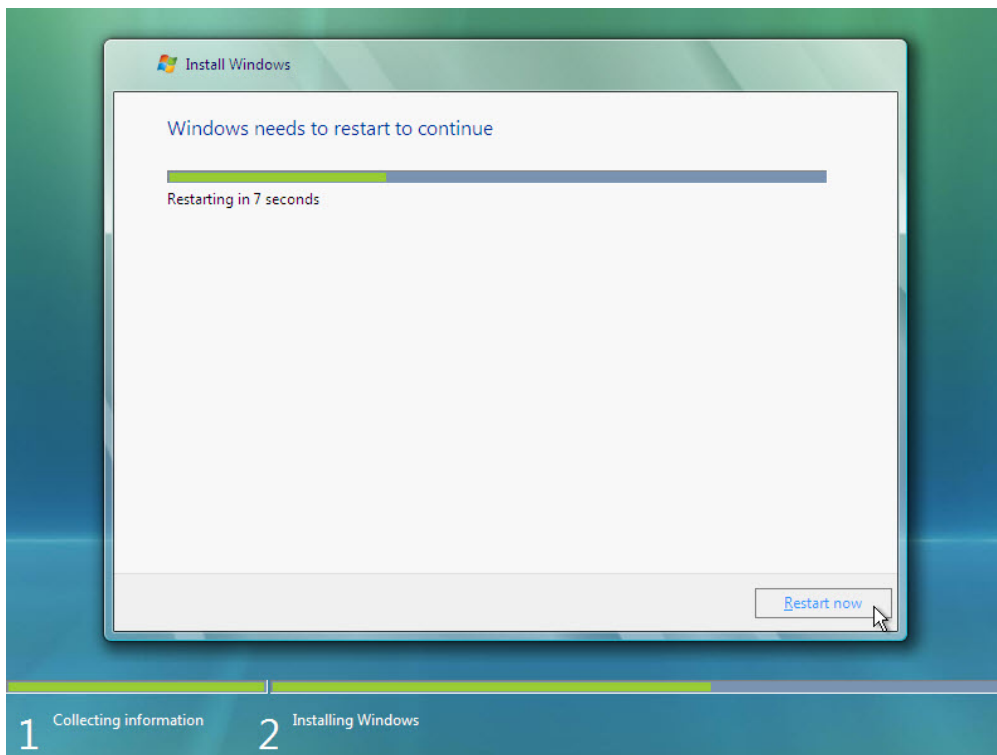
The Installing Windows section begins.

The “Installing Windows ...” screen appears. Windows Vista Setup may take up to 50 minutes to configure your computer.



## Step 10

The “Windows needs to restart to continue” screen appears. Your computer will automatically restart or you can click **Restart now**.



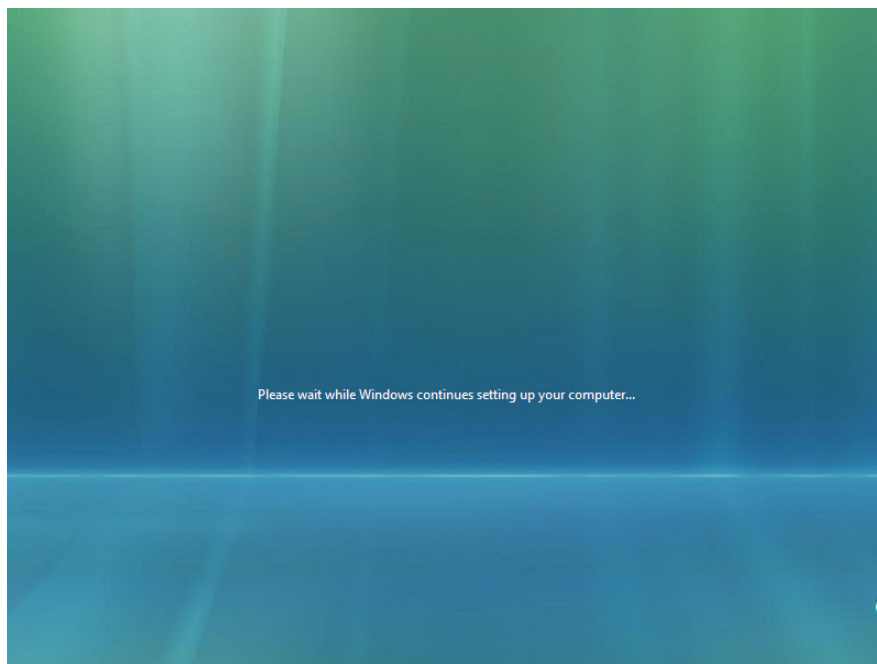


If you get the message “Press any key to boot from CD or DVD.”, **do not press any key** and Windows will boot from the hard disk to continue the installation.



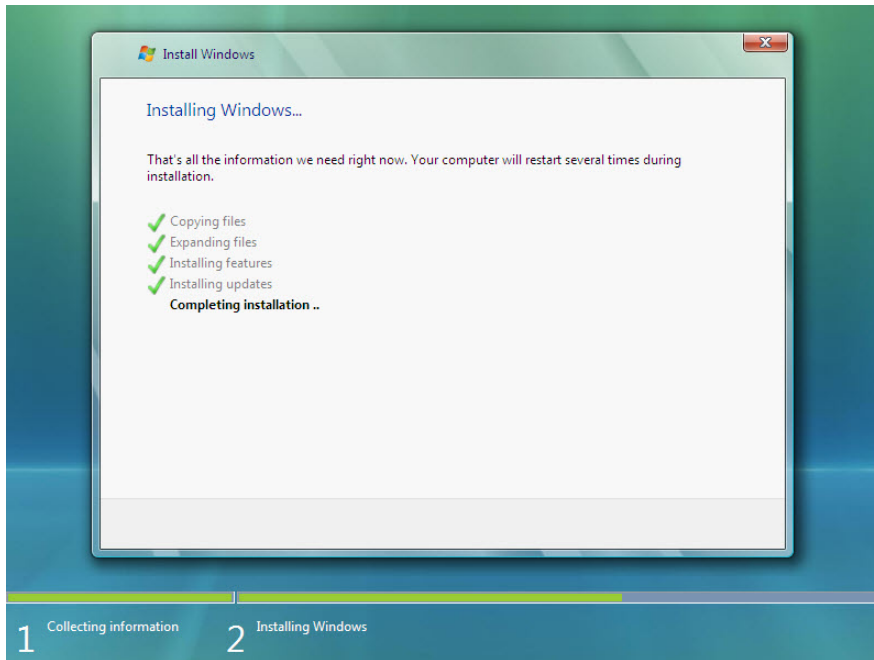
### Step 11

The “Please wait while Windows continues setting up your computer ...” message appears.



## Step 12

The “Installing Windows ...” screen appears again. Windows may reboot a few more times. This may take several minutes.

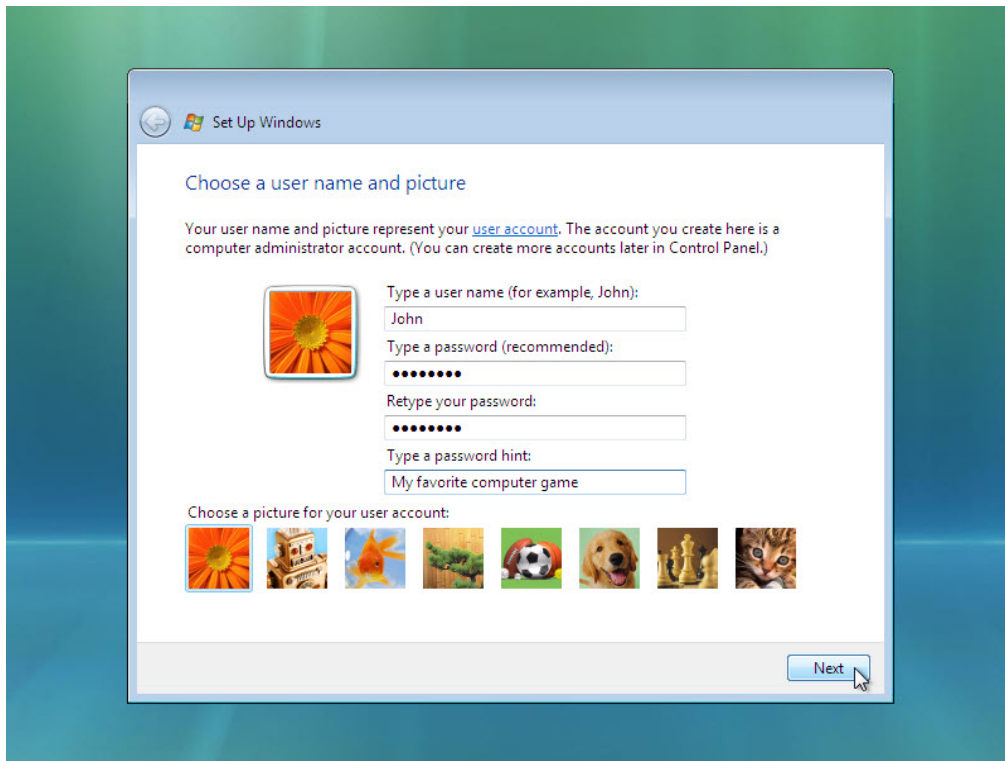


The Installing Windows section of the installation is completed.

## Step 13

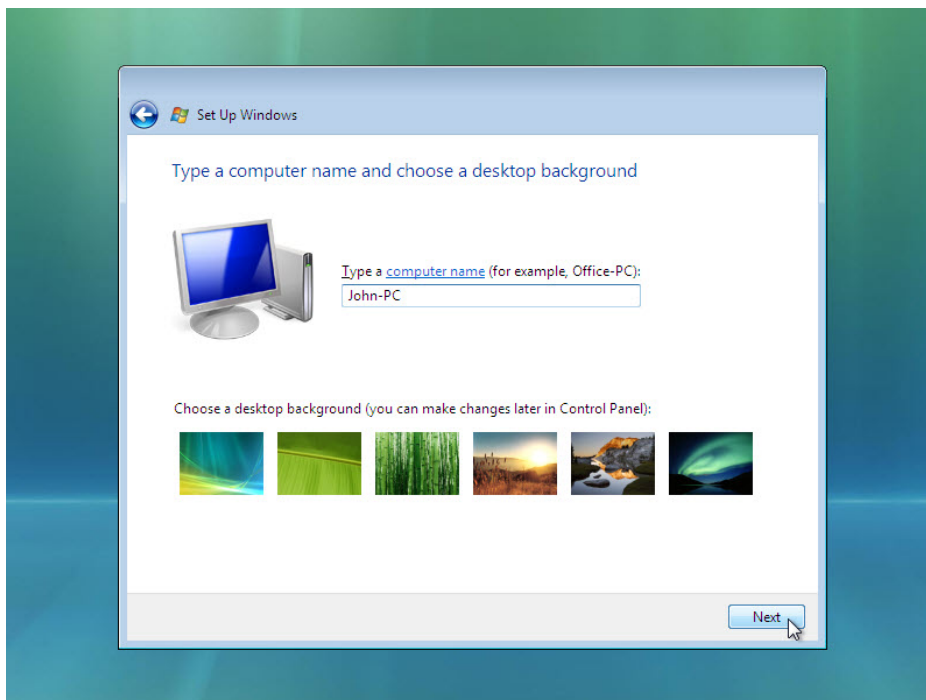
The “Set Up Windows” section begins.

The “Choose a user name and picture” screen appears. Type the name provided by your instructor. Type the Administrator password provided by your instructor. When you type in a password, two new fields will appear. Retype the password and the password hint. Click **Next**.



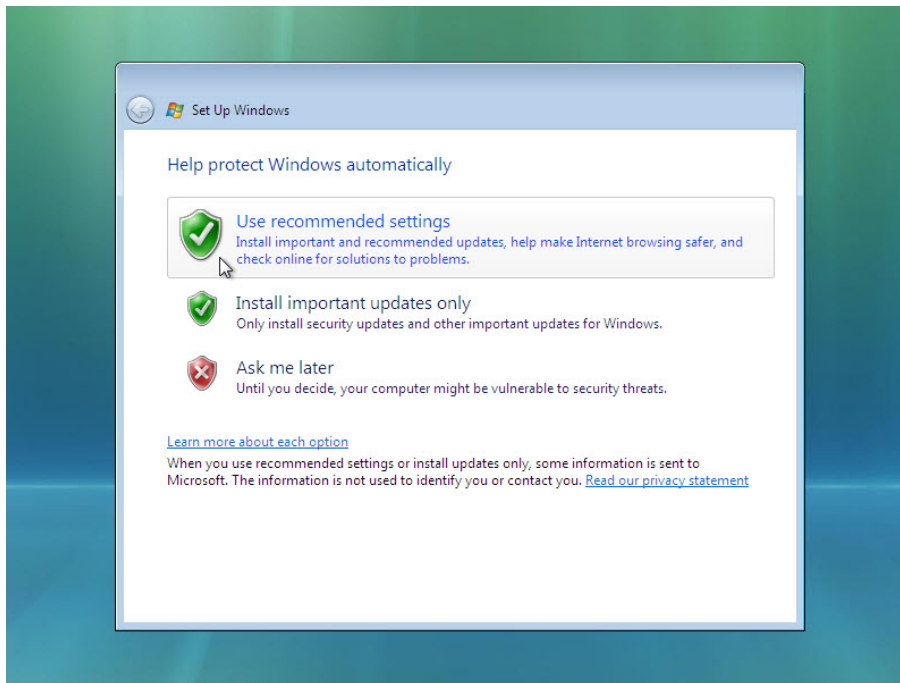
## Step 14

The “Type a computer name and choose a desktop background” screen appears. Type the computer name provided by your instructor. Click **Next**.



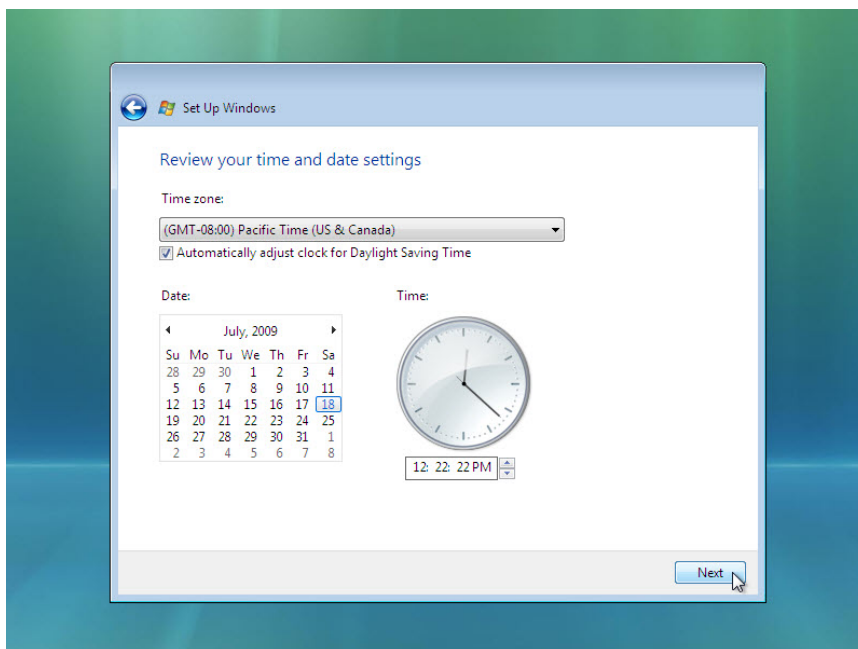
## Step 15

On the “Help protect Windows automatically” screen, click **Use recommended setting**.



## Step 16

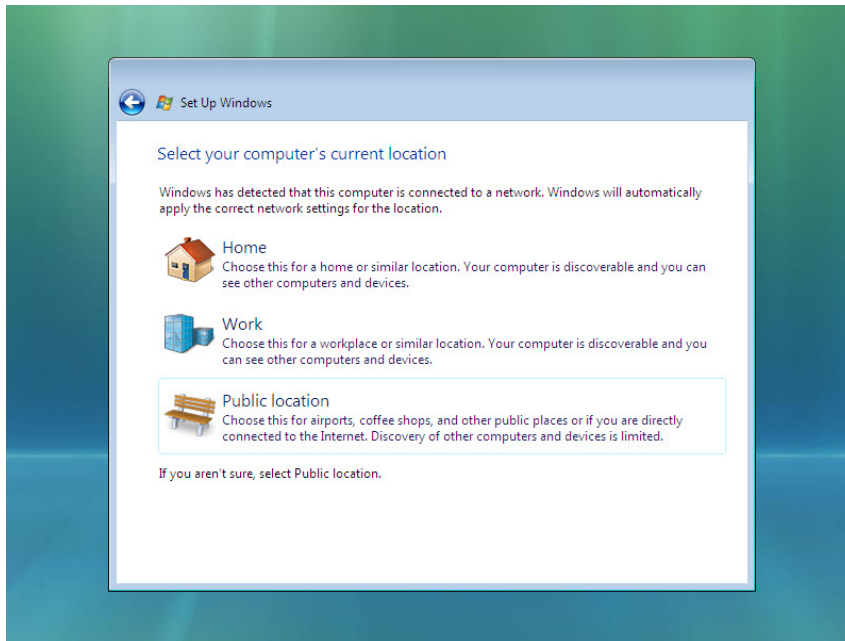
On the “Review your time and date settings” screen, configure the computer clock to match your local date, time, and time zone. Click **Next**.



## Step 17

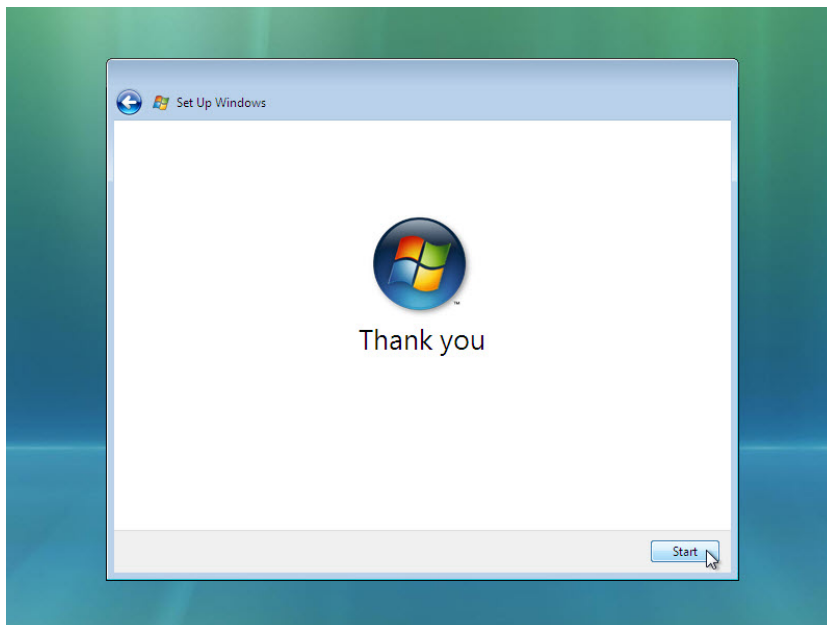
The “Select your computer’s current location” screen appears. Select the option provided by your instructor.

**Note:** This screen will not show up if the installation did not correctly install drivers for the network card.



## Step 18

On the “Thank you” screen, click **Start**.



The “Set Up Windows” section is completed.

### Step 19

The “Please wait while Windows checks your computer's performance” message appears.



### Step 20

Windows Vista boots for the first time.



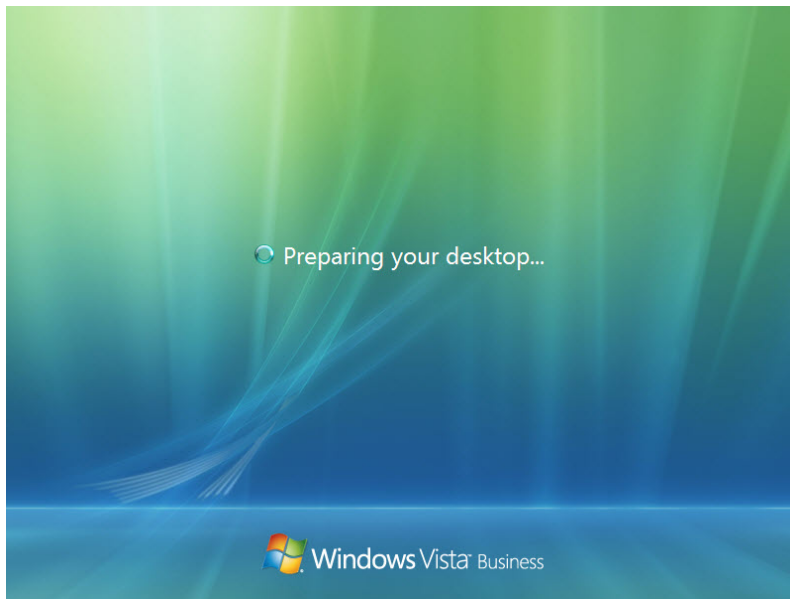
### Step 21

The login window appears. Enter the password that you used during the install process and click the **blue arrow** to login.



### Step 22

The “Preparing your desktop ...” message appears. Your account profile is created and configured.



## Step 23

The "Welcome" screen appears. Windows Vista is now installed.

