

## IT Essentials 5.0

### 5.2.1.7 Lab - Install Windows XP

#### Introduction

Print and complete this lab.

In this lab, you will install the Windows XP Professional operating system.

#### Recommended Equipment

The following equipment is required for this exercise:

- A computer with a blank hard disk drive.
- Windows XP Professional installation CD.

#### Step 1

Insert the Windows XP installation CD into the CD-ROM drive.

When the system starts up, watch for the message "Press any key to boot from CD..".

If the message appears, press any key on the keyboard to boot the system from the CD. The system will now begin inspecting the hardware configuration. If the message does not appear, the hard drive is empty and the system will now begin inspecting the hardware configuration.



## Step 2

The “Windows XP Professional Setup” window opens. During this part of setup, the mouse will not work, so you must use the keyboard. On the “Welcome to Setup” screen, press **Enter** to continue.

```
Windows XP Professional Setup

Welcome to Setup.

This portion of the Setup program prepares Microsoft(R)
Windows(R) XP to run on your computer.

• To set up Windows XP now, press ENTER.
• To repair a Windows XP installation using
  Recovery Console, press R.
• To quit Setup without installing Windows XP, press F3.

ENTER=Continue R=Repair F3=Quit
```

## Step 3

The “Windows XP Licensing Agreement” window opens. Press the **Page Down** key to scroll to the bottom of the license agreement. Press the **F8** key to agree to the license.

```
Windows XP Licensing Agreement

END-USER LICENSE AGREEMENT FOR MICROSOFT SOFTWARE
WINDOWS XP PROFESSIONAL EDITION SERVICE PACK 2

IMPORTANT-READ CAREFULLY:
This End-User License Agreement ("EULA") is a legal agreement
between you (either an individual or a single entity) and
Microsoft Corporation or one of its affiliates ("Microsoft")
for the Microsoft software that accompanies this EULA, which
includes computer software and may include associated media,
printed materials, "online" or electronic documentation, and
Internet-based services ("Software"). An amendment or
addendum to this EULA may accompany the Software.
YOU AGREE TO BE BOUND BY THE TERMS OF THIS
EULA BY INSTALLING, COPYING, OR OTHERWISE
USING THE SOFTWARE. IF YOU DO NOT AGREE,
DO NOT INSTALL, COPY, OR USE THE SOFTWARE;
YOU MAY RETURN IT TO YOUR PLACE OF PURCHASE
FOR A FULL REFUND, IF APPLICABLE.

1. GRANT OF LICENSE.
Microsoft grants you the following rights provided that
you comply with all terms and conditions of this EULA:

1.10 Installation and use. You may install, use, access,
display and run one copy of the Software on a single
computer, such as a workstation, terminal or other
device ("Workstation Computer"). The Software may not

F8=I agree ESC=I do not agree PAGE DOWN=Next Page
```

## Step 4

Select the hard drive or partition on which Windows XP will be installed.  
Press **Enter** to select “Unpartitioned space”, which is the default setting.

```
Windows XP Professional Setup

The following list shows the existing partitions and
unpartitioned space on this computer.

Use the UP and DOWN ARROW keys to select an item in the list.

• To set up Windows XP on the selected item, press ENTER.
• To create a partition in the unpartitioned space, press C.
• To delete the selected partition, press D.

16379 MB Disk 0 at Id 0 on bus 0 on atapi [MBR]
  Unpartitioned space          16379 MB

ENTER=Install  C=Create Partition  F3=Quit
```

## Step 5

Press **Enter** again to select “Format the partition using the NTFS file system”, which is the default setting.

```
Windows XP Professional Setup

A new partition for Windows XP has been created on
16379 MB Disk 0 at Id 0 on bus 0 on atapi [MBR].

This partition must now be formatted.

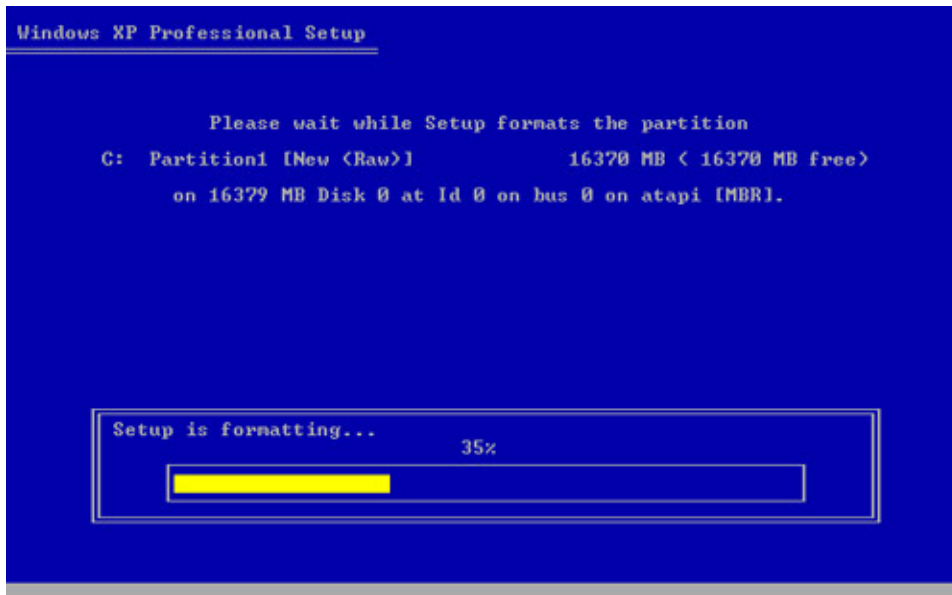
From the list below, select a file system for the new partition.
Use the UP and DOWN ARROW keys to select the file system you want,
and then press ENTER.

If you want to select a different partition for Windows XP,
press ESC.

Format the partition using the NTFS file system <Quick>
Format the partition using the FAT file system <Quick>
Format the partition using the NTFS file system
Format the partition using the FAT file system

ENTER=Continue  ESC=Cancel
```

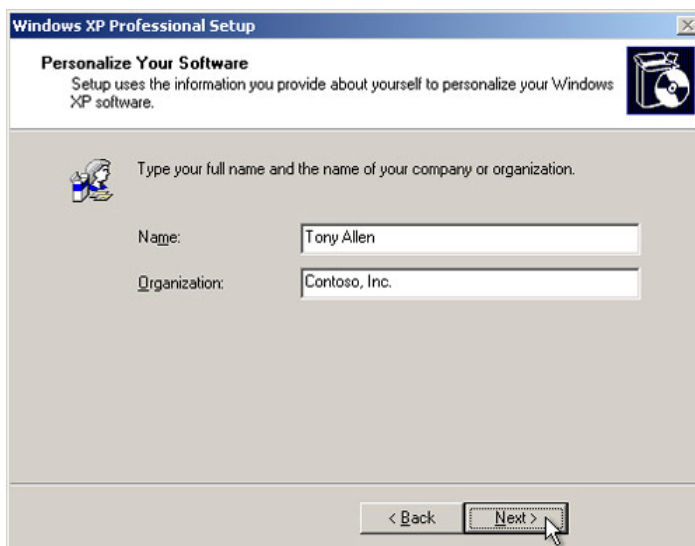
Windows XP Professional Setup erases the hard disk drive, formats the hard disk drive, and copies the setup files from the installation CD to the hard disk drive. This process should take between 20 and 30 minutes to complete.



## Step 6

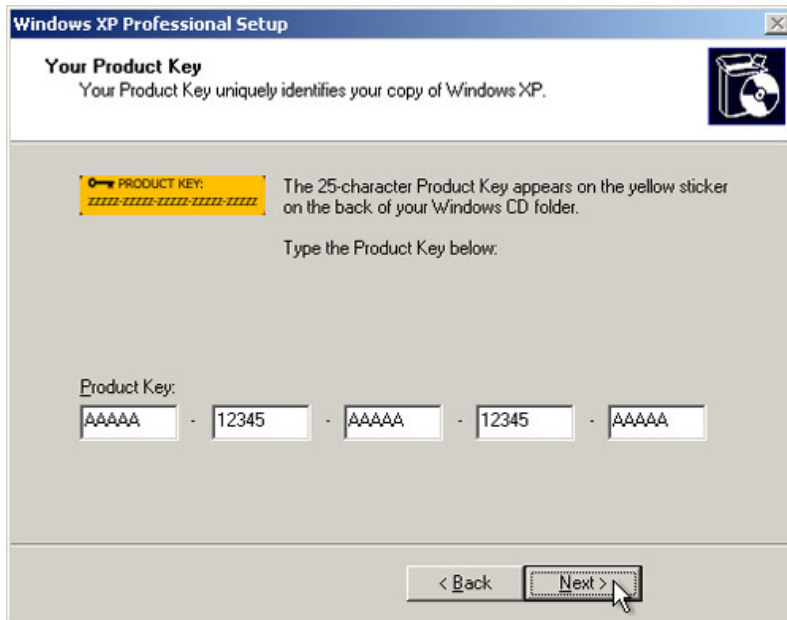
After the formatting process, Windows XP restarts and continues with the installation process. At this point, the mouse can be used to make selections. The “Regional and Language Options” screen appears. Click **Next** to accept the default settings. Regional and language options can be configured after setup is complete.

The “Personalize Your Software” screen appears. Type the name and the organization name provided by your instructor. Click **Next**.



## Step 7

The “Your Product Key” screen appears. On this page, type your product key as it appears on your Windows XP CD case. Click **Next**.

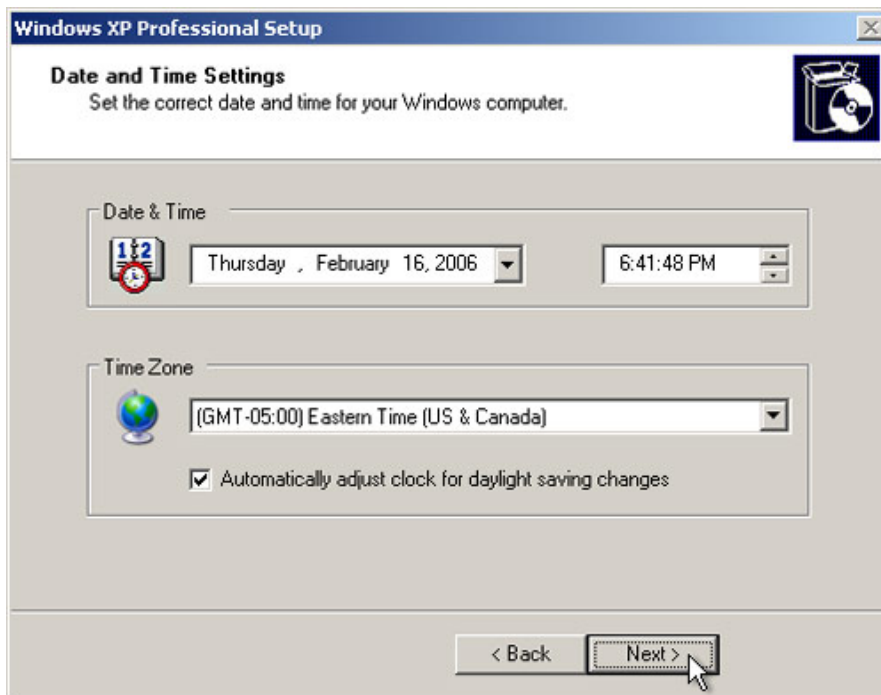


On the “Computer Name and Administrator Password” screen, type the computer name provided by your instructor. Type the Administrator password provided by your instructor. Retype it in the Confirm password section. Click **Next**.



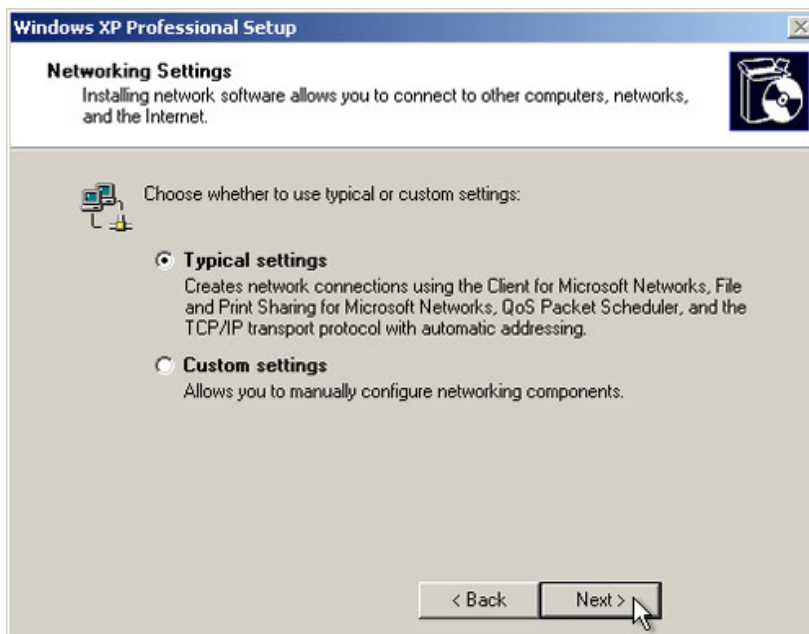
## Step 8

On the “Date and Time Settings” screen, configure the computer clock to match your local date, time, and time zone. Click **Next**.



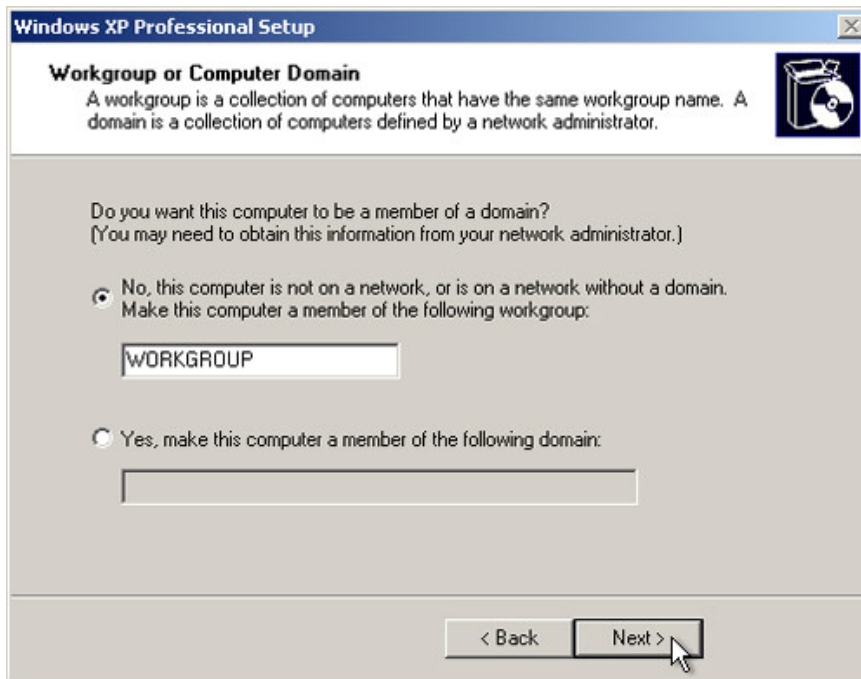
## Step 9

On the “Networking Settings” screen, click **Next** to accept “Typical settings”. “Custom settings” can be configured after setup is complete.



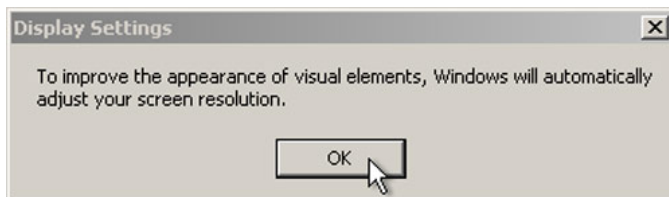
## Step 10

On the “Workgroup or Computer Domain” screen, accept the default settings and click **Next**.



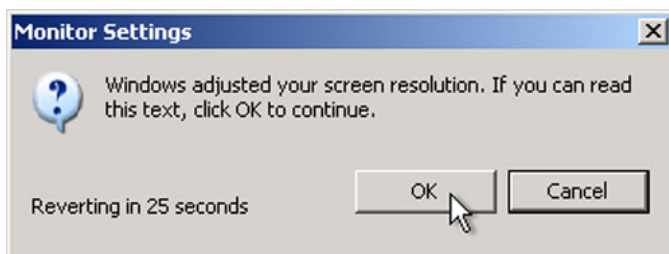
## Step 11

Windows XP Professional Setup may take about 25 minutes to configure your computer. Your computer will automatically restart when the setup program is complete. When the “Display Settings” window opens, click **OK**.



## Step 12

When the “Monitor Settings” window opens, click **OK**.



## Step 13

The final phase of Windows XP Professional Setup begins. On the “Welcome to Microsoft Windows” screen, click **Next**.



## Step 14

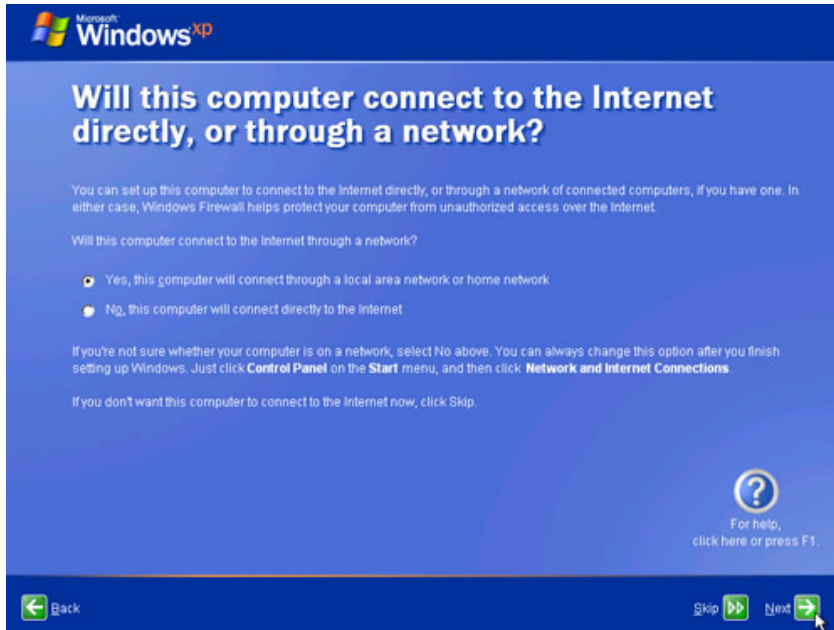
On the “Help protect your PC” screen, select “Help protect my PC by turning on Automatic Updates now”. Click **Next**.





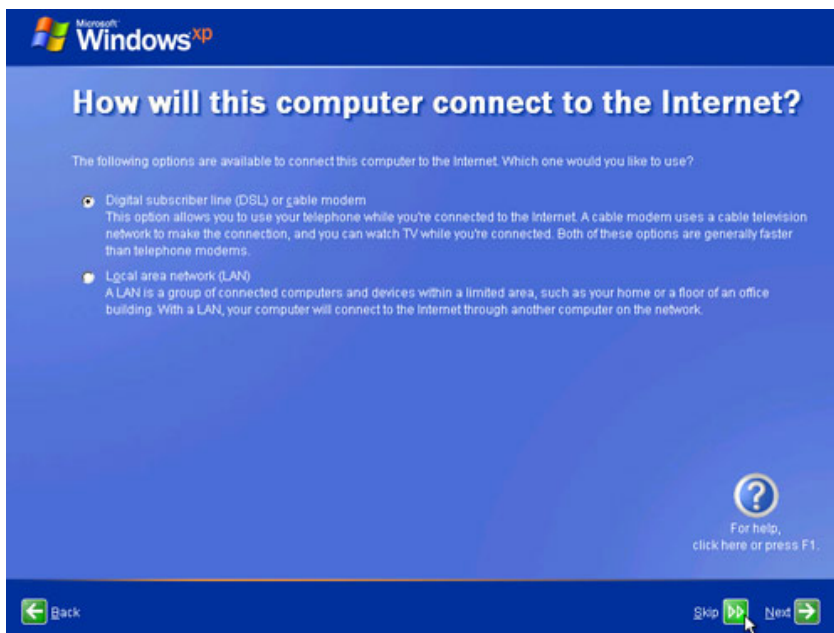
## Step 15

Windows XP will now check to make sure that you are connected to the Internet. If you are already connected to the Internet, select the choice that represents your network connection. If you are unsure of the connection type, accept the default selection, and click **Next**.



## Step 16

If you use dial-up Internet access, or if Windows XP Professional Setup cannot connect to the Internet, you can connect to the Internet after setup is complete. Click **Skip** to continue.



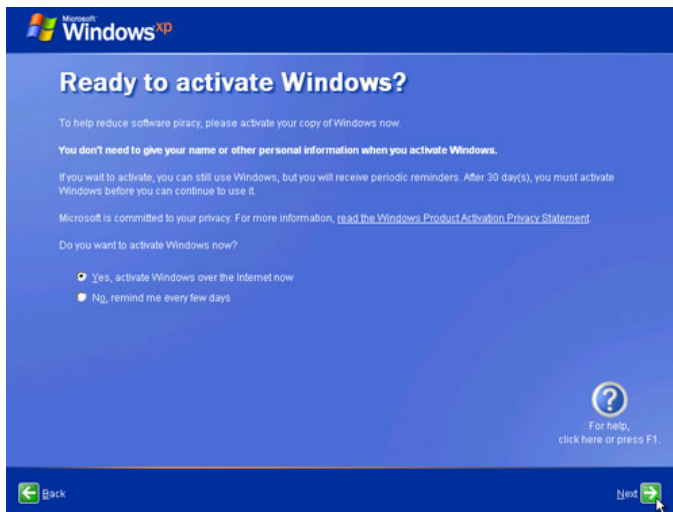
## Step 17

Windows XP Professional Setup displays the “Ready to activate Windows?” screen.

If you are already connected to the Internet, click **Yes**, and then click **Next**.

If you are not yet connected to the Internet, click **No**, and then click **Next**.

After setup is complete, Windows XP setup program will remind you to activate and register your copy of Windows XP.

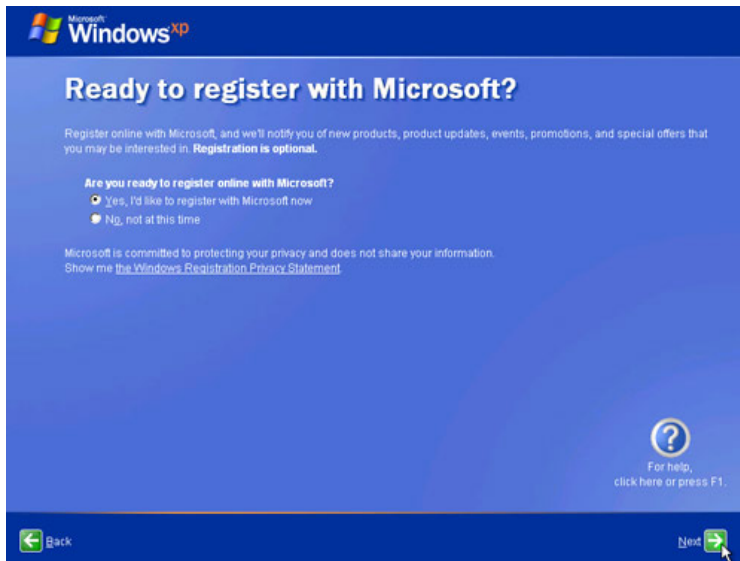


## Step 18

If you have an Internet connection, click **Yes, I'd like to register with Microsoft now**.

If you do not have an Internet connection, click **No, not at this time**.

Click **Next**.



## Step 19

On the "Collecting Registration Information" screen, fill in the fields using the information provided by your instructor and click **Next**.

The screenshot shows the "Collecting Registration Information" screen. At the top left is the Microsoft Windows XP logo. The main heading is "Collecting Registration Information". Below this, a instruction reads: "To move to the next box, press TAB on your keyboard."

The form contains the following fields:

- First name: Tony
- Last name: Allen
- Address: 1 Pine Street
- City: Anywhere (Optional)
- State/Province: TX
- Postal or ZIP code: 78753
- Country/Region: United States
- E-mail address: tony.allen@contoso.com (Optional)

At the bottom left, there are two checkboxes:

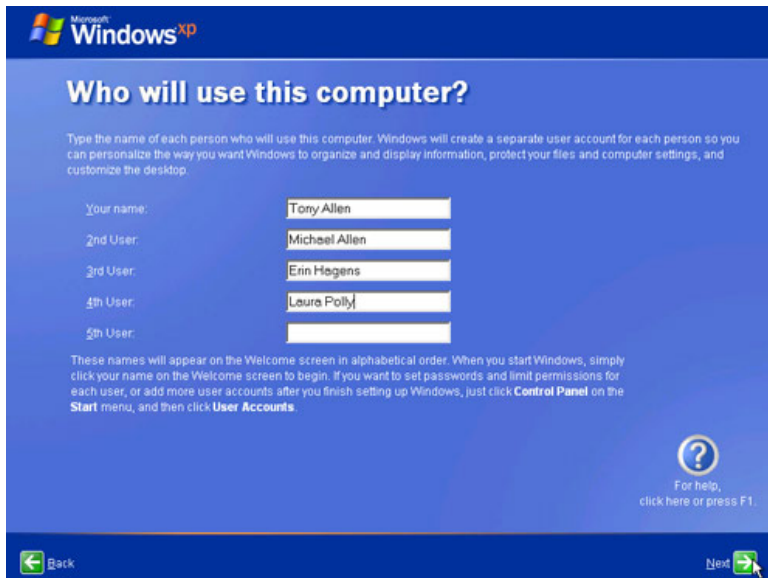
- Send me promotions and offers from Microsoft.
- Send me promotions and offers from Microsoft's partners.

In the bottom right corner, there is a help icon (a question mark in a circle) with the text: "For help, click here or press F1".

At the bottom of the screen, there are three navigation buttons: "Back" with a left-pointing arrow, "Skip" with a right-pointing arrow, and "Next" with a right-pointing arrow.

## Step 20

On the "Who will use this computer?" screen, enter the information provided by your instructor. Click **Next**.



## Step 21

On the "Thank you!" screen, click **Finish** to complete the installation.

