

IT Essentials 5.0

5.2.2.5 Lab - Advanced Installation of Windows XP

Introduction

Print and complete this lab.

In this lab, you will install a Windows XP operating system by using an answer file for automation. You will customize partition settings and create an administrative user and limited user.

Recommended Equipment

The following equipment is required for this exercise:

- A computer with a new installation of Windows XP
- Windows XP installation media
- A blank, formatted floppy disk

Step 1

Log on to the computer.

Insert the Windows XP Professional CD in the CD-ROM drive.

Click **Perform additional tasks**.



Step 2

Click **Browse this CD**.



Double-click the **Support** folder.

Double-click the **Tools** folder.

Double-click **Deploy.CAB**.

Highlight all of the files by clicking **Edit > Select All**.

Right-click **setupmgr.exe** and then click **Extract**.

Click **Make New Folder** to create a folder on the C: drive.

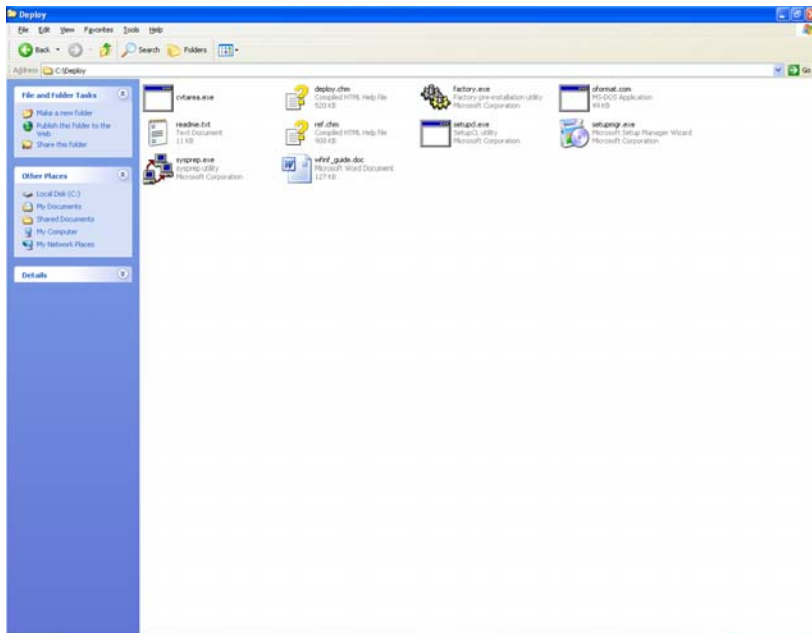
Name the folder "Deploy".

Click **Extract** to extract the files from the CD to C:\Deploy.

Browse to C:\Deploy.

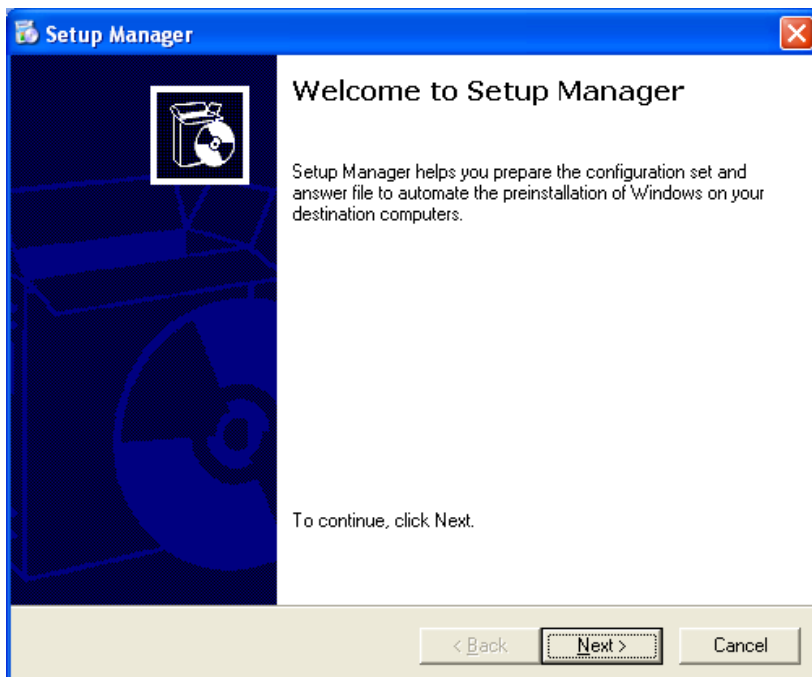
Step 3

Double-click **setupmgr.exe**.

**Step 4**

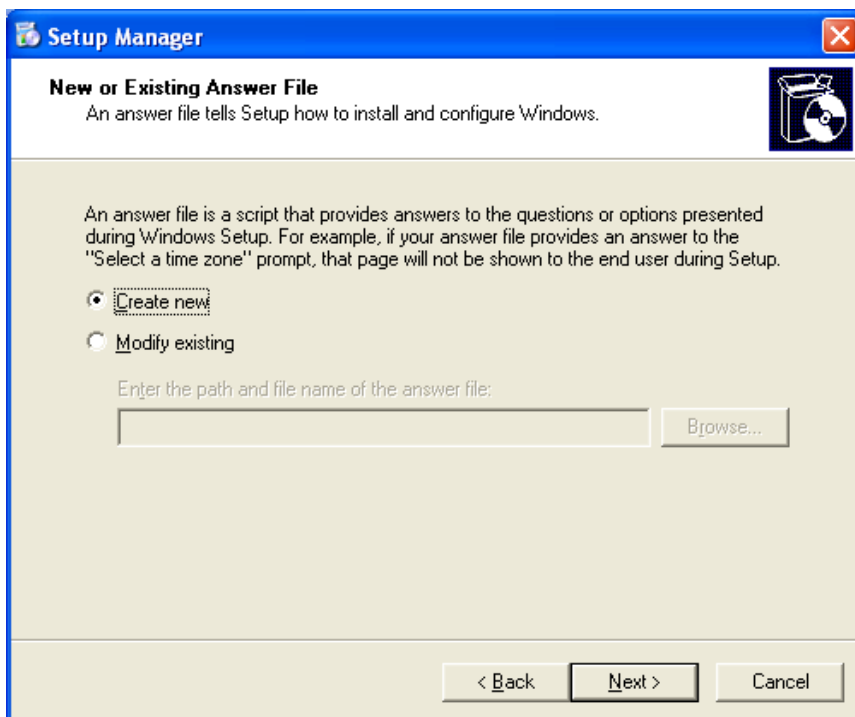
The "Setup Manager" window opens.

Click **Next**.



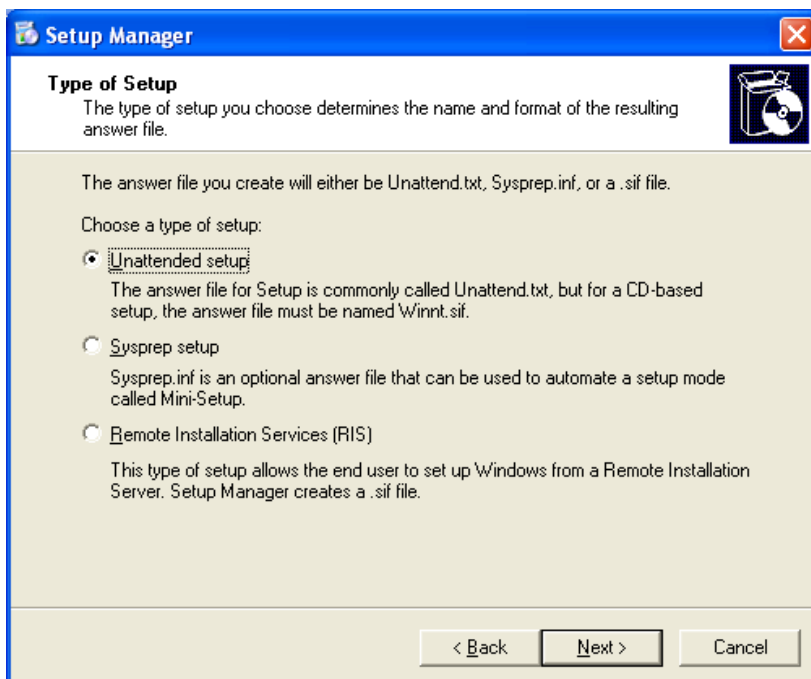
The **Create new** button should be checked by default.

Click **Next**.

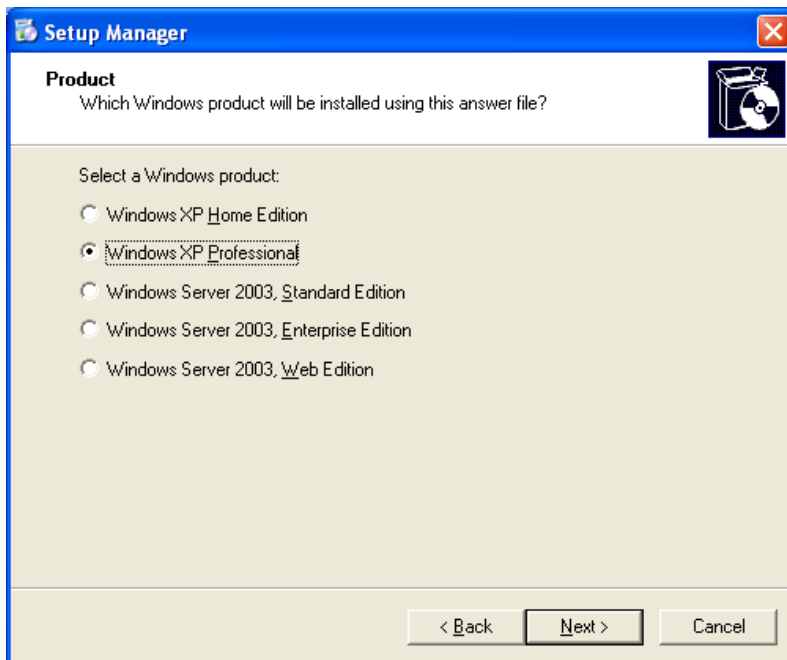


Select the **Unattended setup** radio button.

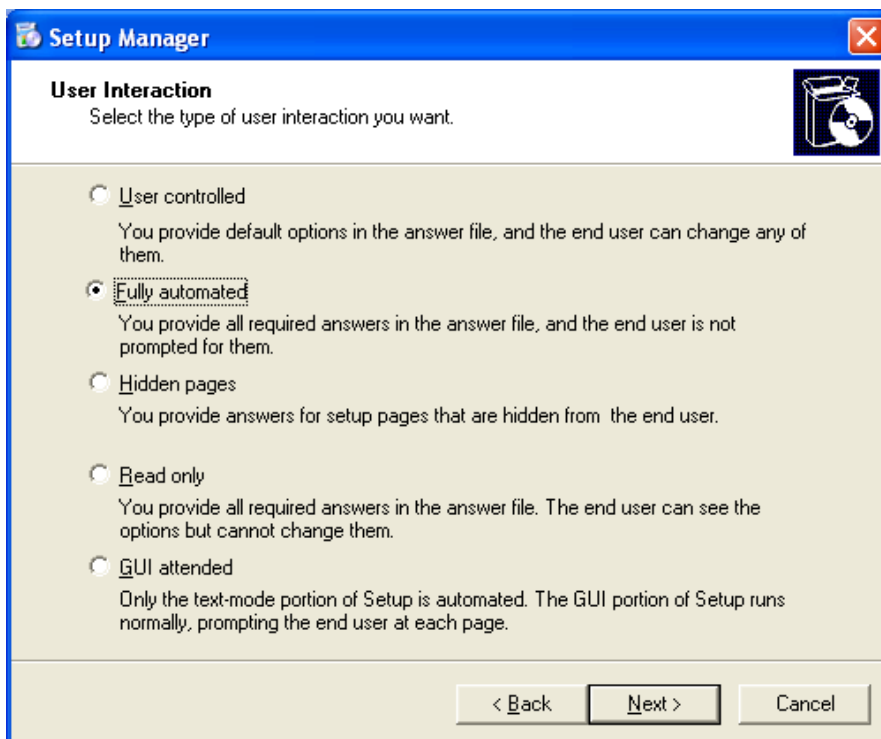
Note that a CD-based answer file name must be Winnt.sif.



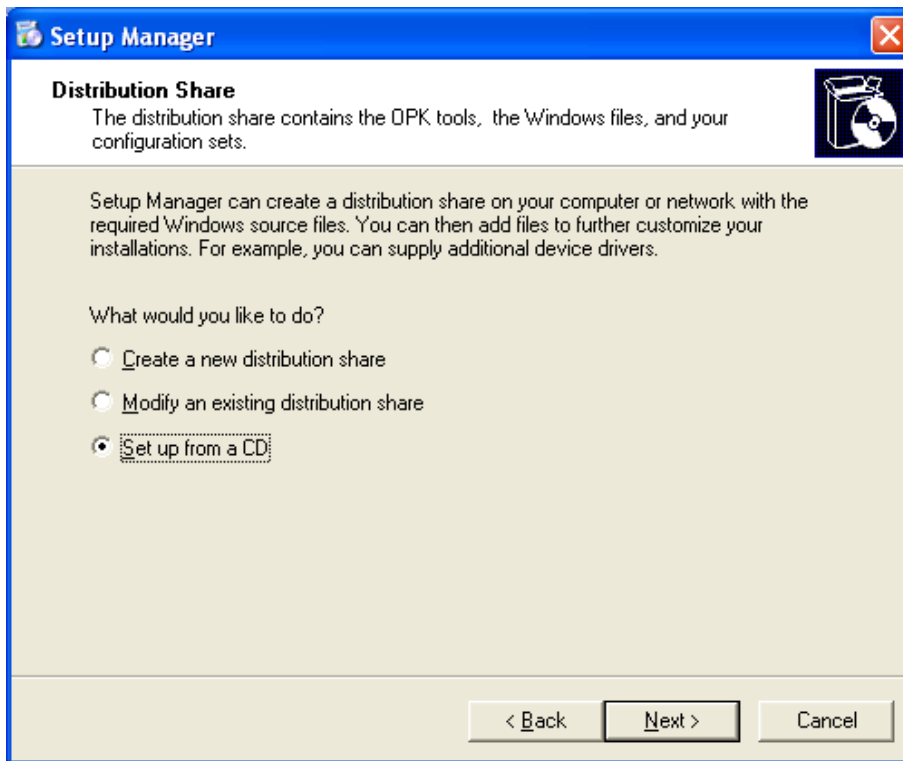
Select the **Windows XP Professional** radio button, and then click **Next**.



Select the **Fully automated** radio button, and then click **Next**.



Select the **Set up from a CD** radio button, and then click **Next**.



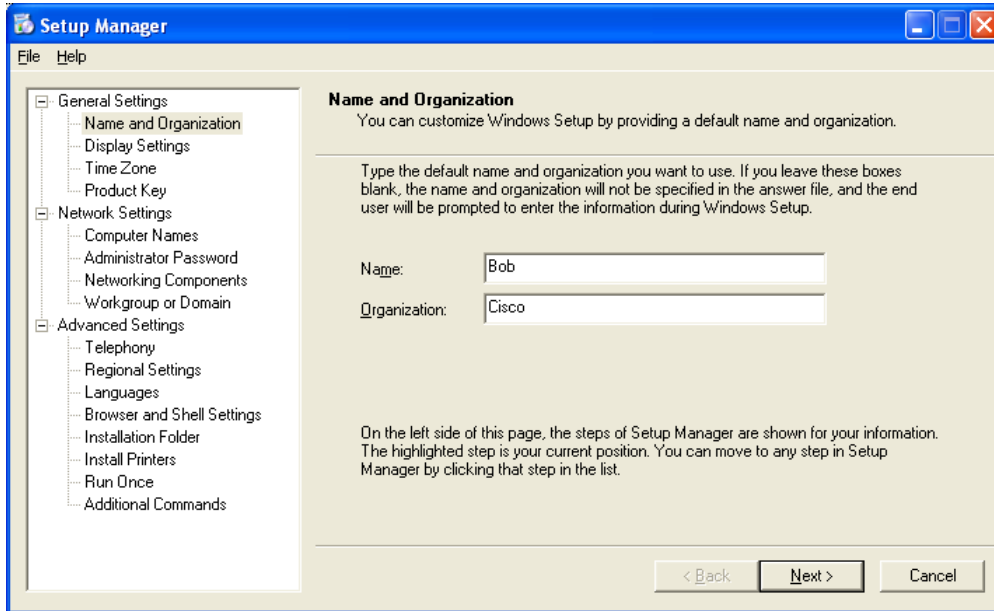
Click the **I accept the terms of the License Agreement** checkbox, and then click **Next**.



Click **Name and Organization** in the list on the left.

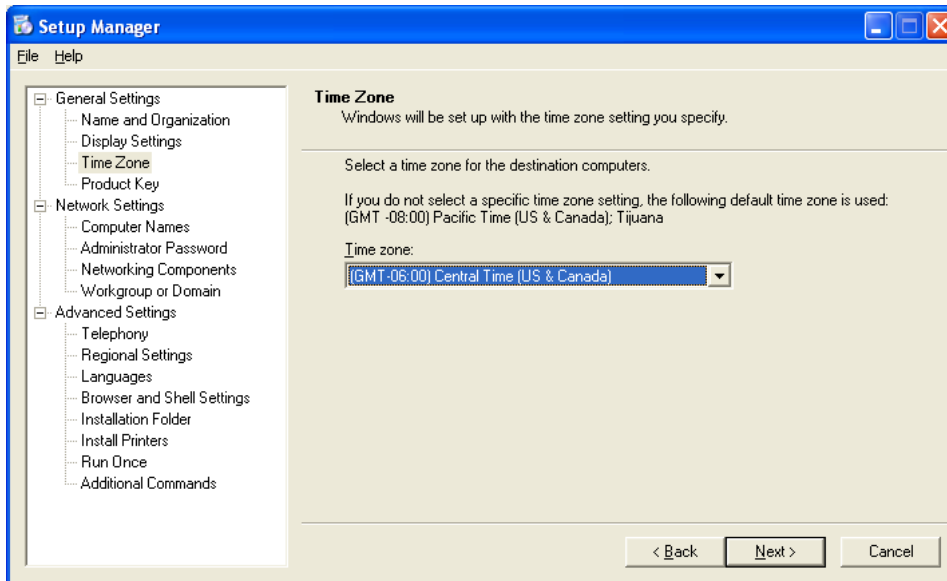
Type the name and the organization name provided by your instructor.

Click **Next**.



Click **Time Zone** in the list on the left.

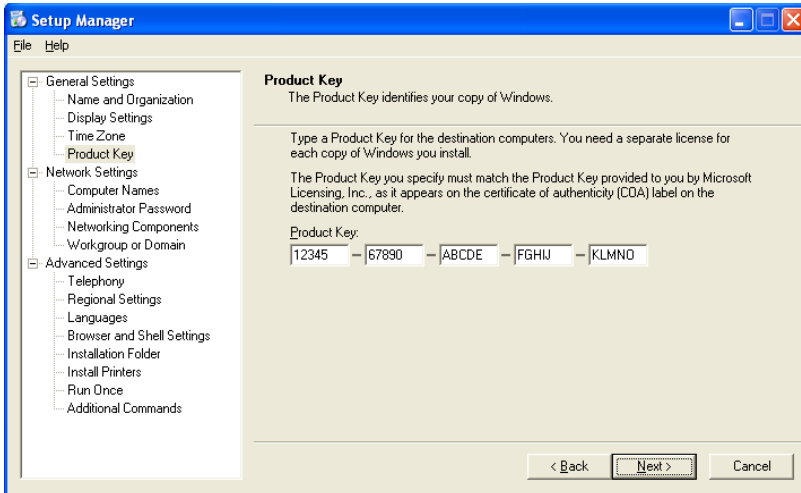
Click the time zone for your location from the "Time zone:" drop-down box, and then click **Next**.



Highlight **Product Key** in the list on the left.

Type the Windows XP Professional product key supplied by your instructor in the “Product Key:” fields.

Click **Next**.

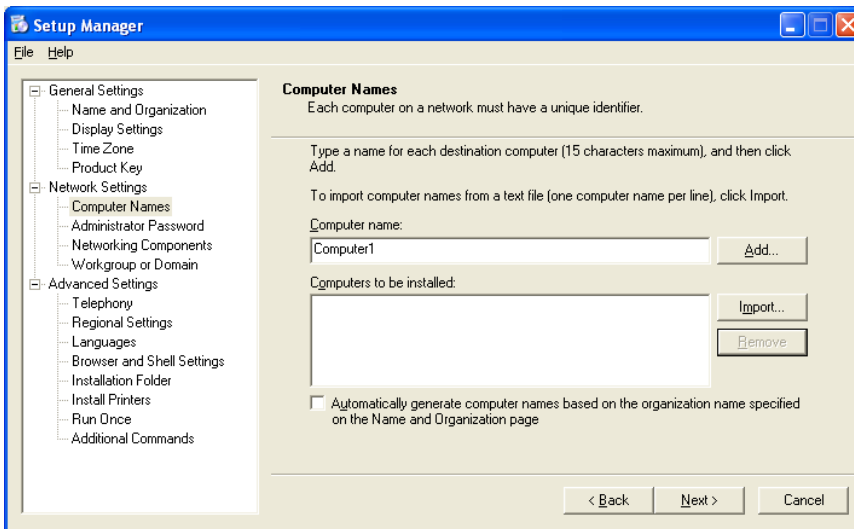


Click **Computer Names** in the list on the left.

Type the computer name provided by your instructor in the “Computer name:” field, and then click **Add**.

The computer name will then display in the “Computers to be installed:” field.

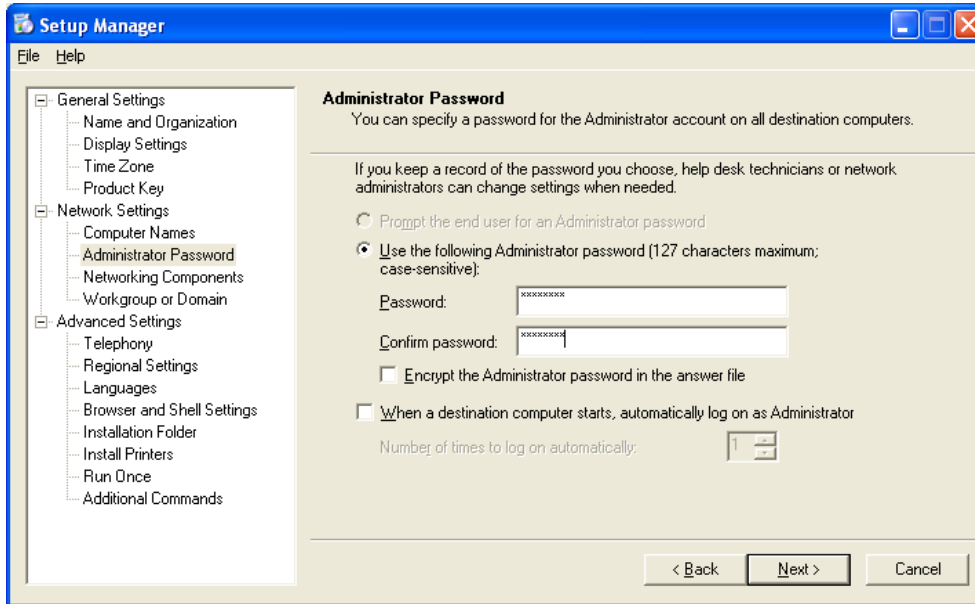
Click **Next**.



Click **Administrative Password** in the list on the left.

Type your first initial of your first name and your complete last name in the “Password:” and “Confirm password:” fields. (For example, jsmith)

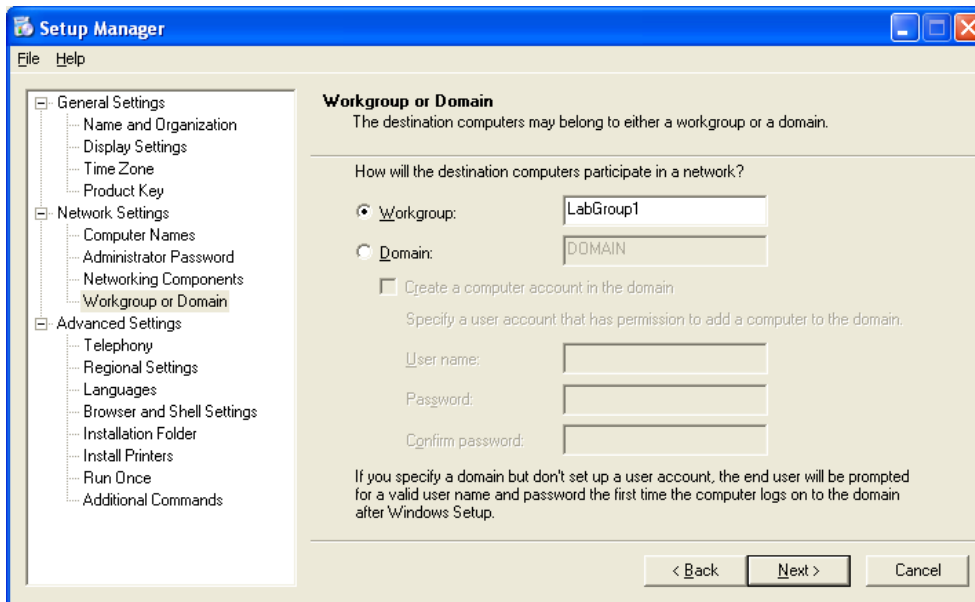
Click **Next**.



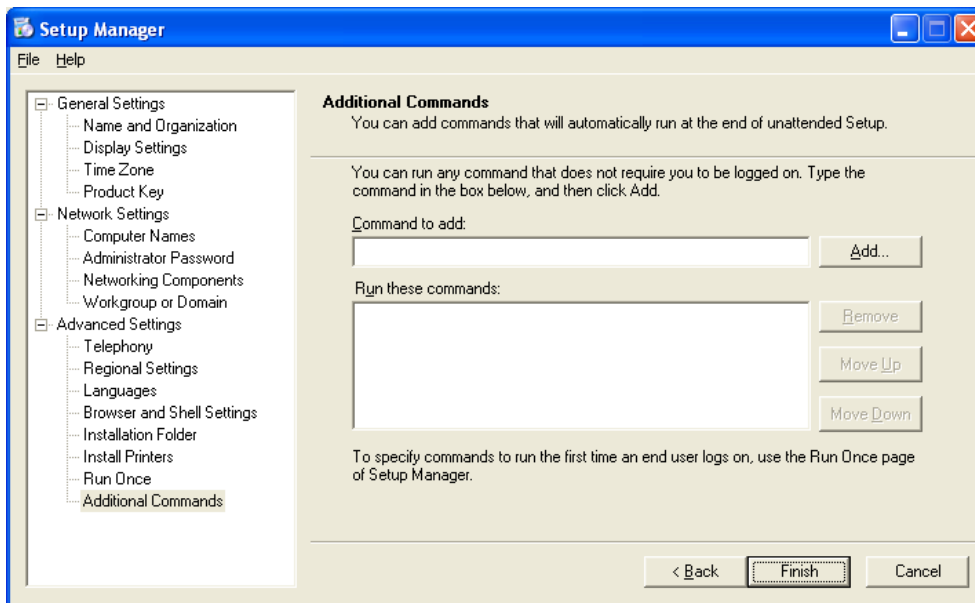
Click **Workgroup or Domain** in the list on the left.

Select the **Workgroup** radio button.

Type the Workgroup name **LabGroup1** in the “Workgroup:” field, and then click **Next**.

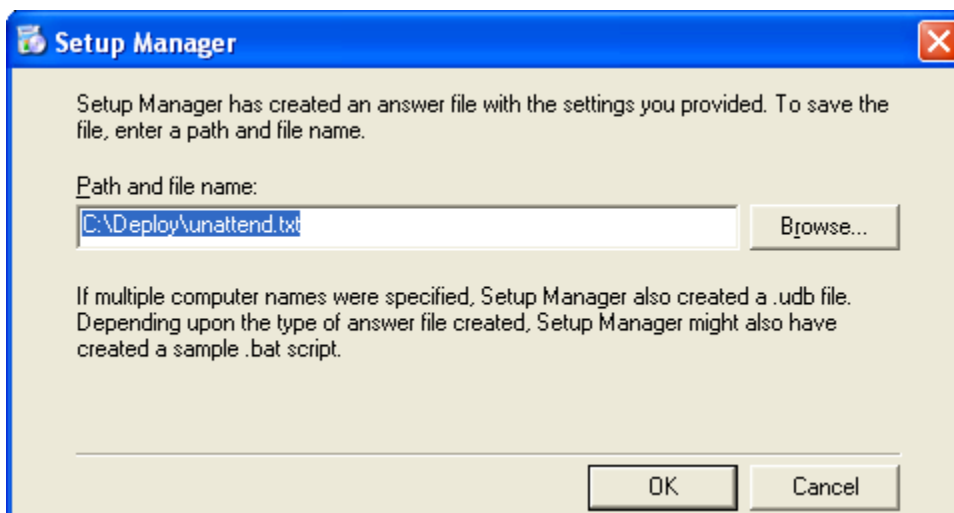


Click **Additional Commands** in the list on the left, and then click **Finish**.

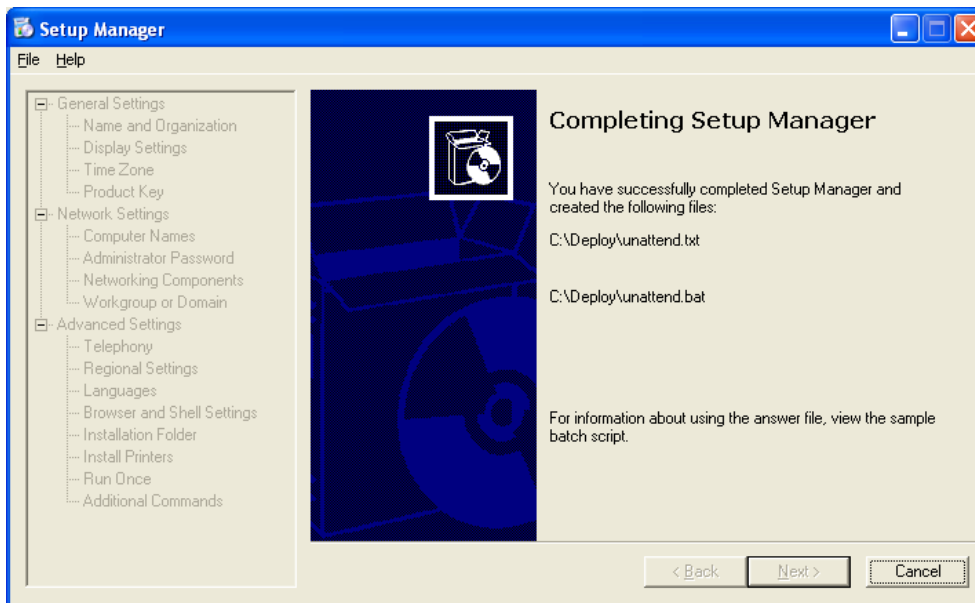


Type "C:\Deploy\unattend.txt" in the "Path and file name:" field if it is not already displayed.

Click **OK**.



Click **File > Exit**.



Step 5

Browse to "C:\Deploy".

Right-click **unattend.txt**, and then click **copy**.

Browse to "A:\".

Click **File > Paste**.

Right-click **unattend.txt**, and then click **rename**.

Type **Winnt.sif** as the new file name, and press **Enter**.

Copy **unattend.bat** to the floppy disk.

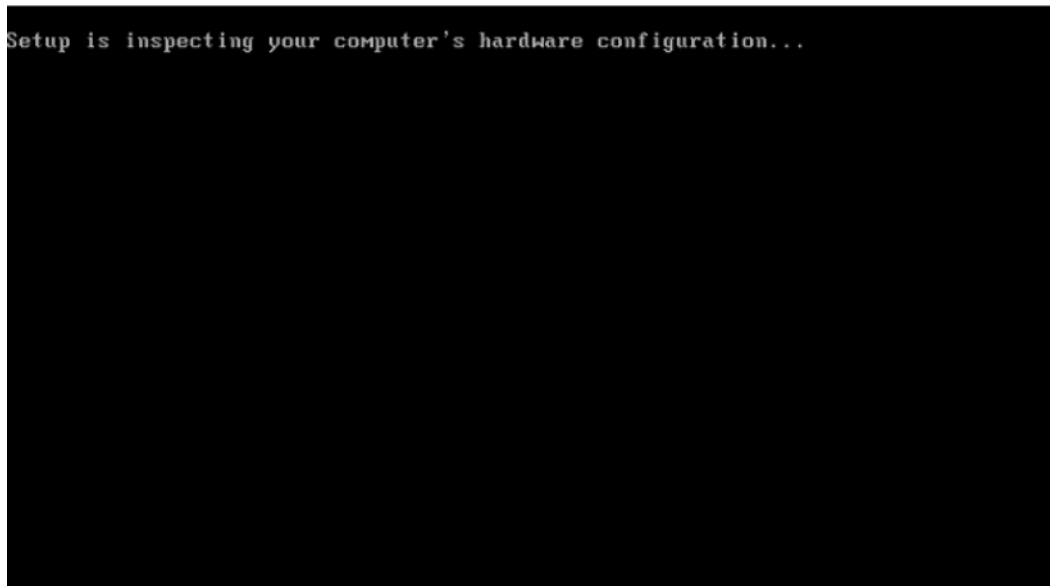
Remove the floppy disk from the floppy drive.

Click **Start > Turn Off Computer**.

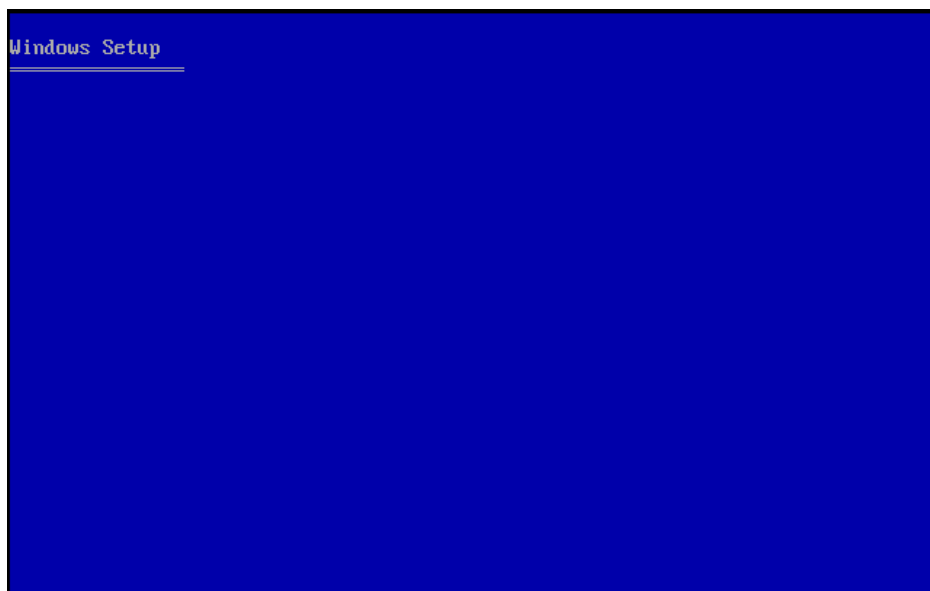
Click **Restart**.

Step 6

When the “Press Any Key to Boot from CD” message appears, press any key on the keyboard. Insert the floppy disk. The system will inspect the hardware configuration.



The “Windows Setup” screen appears while the program loads the necessary files.



Step 7

The "Welcome to Setup" screen appears. Press **Enter**.

```
Windows XP Professional Setup

Welcome to Setup.

This portion of the Setup program prepares Microsoft(R)
Windows(R) XP to run on your computer.

• To set up Windows XP now, press ENTER.
• To repair a Windows XP installation using
  Recovery Console, press R.
• To quit Setup without installing Windows XP, press F3.

ENTER=Continue R=Repair F3=Quit
```

The "Windows XP Licensing Agreement" screen appears.

Press **F8**.

```
Windows XP Licensing Agreement

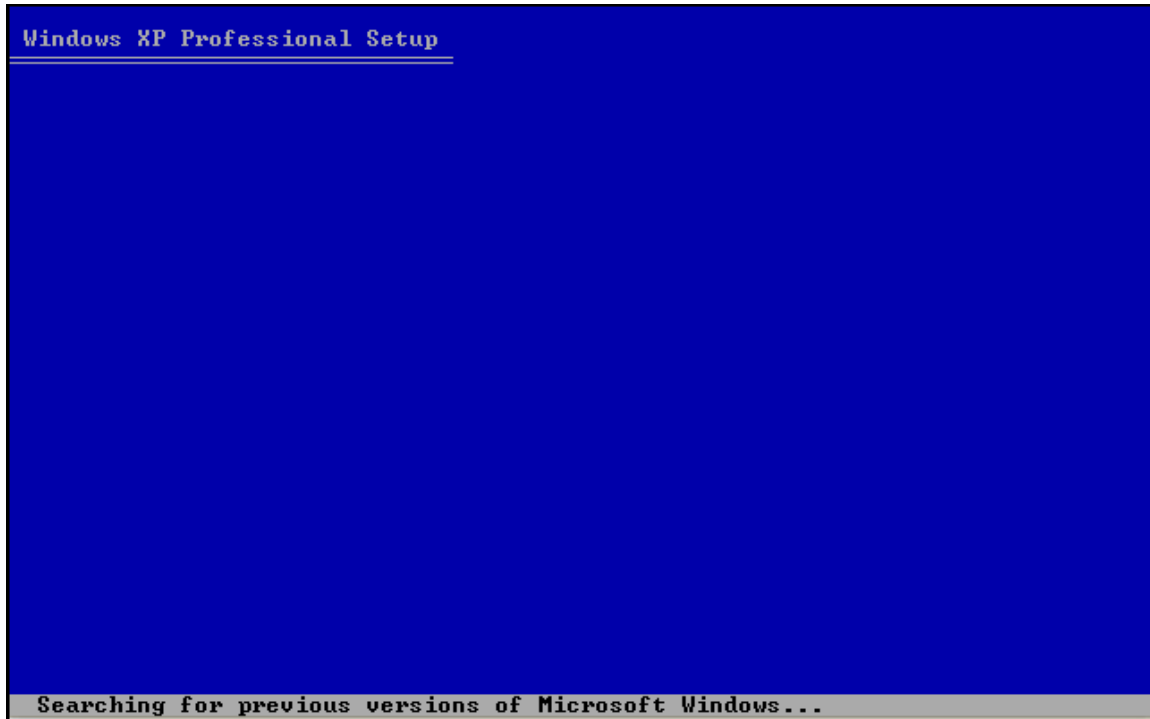
Microsoft(r) Windows(r) XP Professional
END-USER LICENSE AGREEMENT

IMPORTANT-READ CAREFULLY: This End-User
License Agreement ("EULA") is a legal agreement between you
(either an individual or a single legal entity) and the
manufacturer ("Manufacturer") of the computer system or computer
system component ("HARDWARE") with which you acquired the
Microsoft software product(s) identified above ("SOFTWARE"). The
SOFTWARE includes Microsoft computer software, and may include
associated media, printed materials, "online," or electronic
documentation and Internet based services. Note, however, that
any software, documentation, or web services that are included in
the SOFTWARE, or accessible via the SOFTWARE, and are
accompanied by their own license agreements or terms of use
are governed by such agreements rather than this EULA. The terms
of a printed, paper EULA, which may accompany the SOFTWARE,
supersede the terms of any on-screen EULA. This EULA is valid
and grants the end-user rights ONLY if the SOFTWARE is genuine
and a genuine Certificate of Authenticity for the SOFTWARE is
included. For more information on identifying whether your
software is genuine, please see
http://www.microsoft.com/piracy/howtotell.

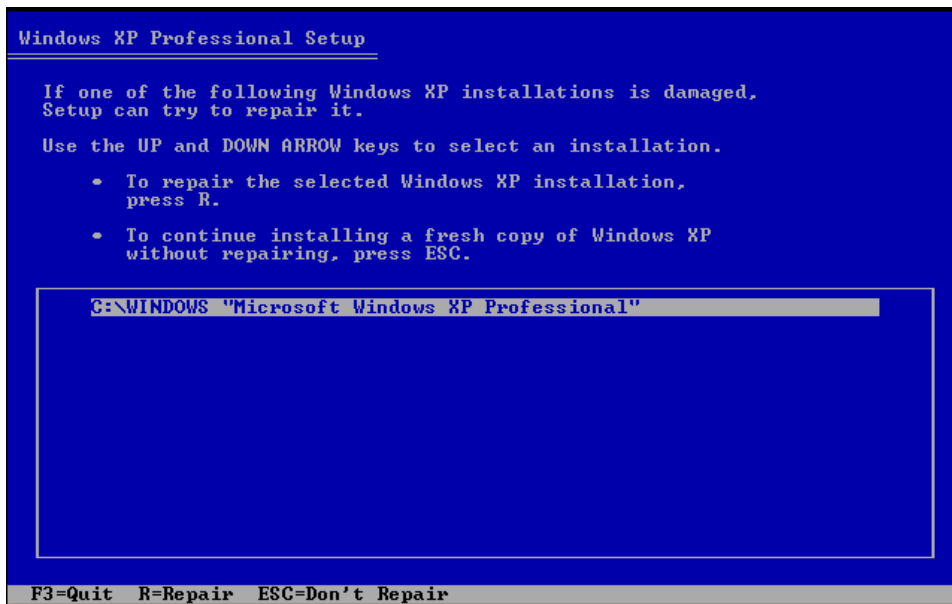
By installing, copying, downloading, accessing or otherwise using
the SOFTWARE, you agree to be bound by the terms of this EULA.

F8=I agree ESC=I do not agree PAGE DOWN=Next Page
```

Windows XP Professional Setup will search to determine if another operating system already exists on the hard drive.



Press **ESC**.



Press the **D** key.

```
Windows XP Professional Setup
-----
The following list shows the existing partitions and
unpartitioned space on this computer.

Use the UP and DOWN ARROW keys to select an item in the list.

  • To set up Windows XP on the selected item, press ENTER.
  • To create a partition in the unpartitioned space, press C.
  • To delete the selected partition, press D.

16379 MB Disk 0 at Id 0 on bus 0 on atapi [MBR]
C: Partition1 [NTFS]          16371 MB < 15787 MB free>
  Unpartitioned space          8 MB

ENTER=Install  D=Delete Partition  F3=Quit
```

Press **Enter**.

```
Windows XP Professional Setup
-----
The partition you tried to delete is a system partition.

System partitions may contain diagnostic or hardware configuration
programs, programs to start operating systems (such as Windows XP),
or other manufacturer-supplied programs.

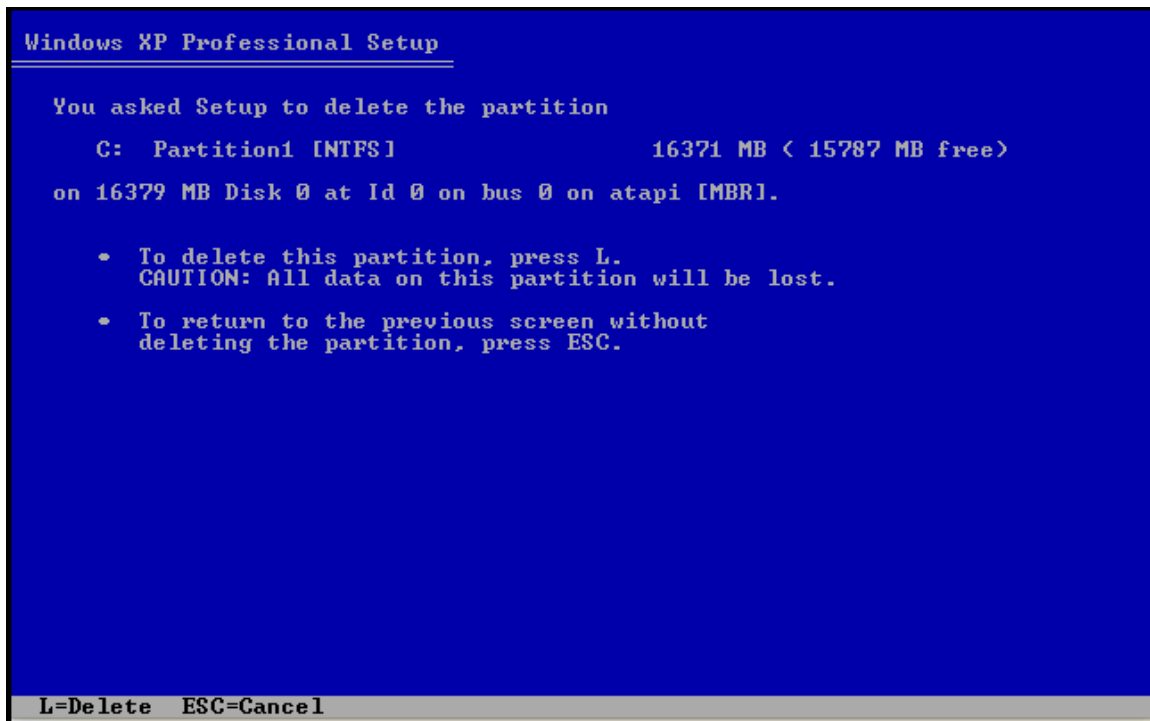
Delete a system partition only if you are sure that it contains
no such programs or if you are willing to lose them. Deleting a
system partition may prevent your computer from starting from
the hard disk until you complete installation of Windows XP.

  • To delete this partition, press ENTER.
    Setup will prompt you for confirmation before
    deleting the partition.

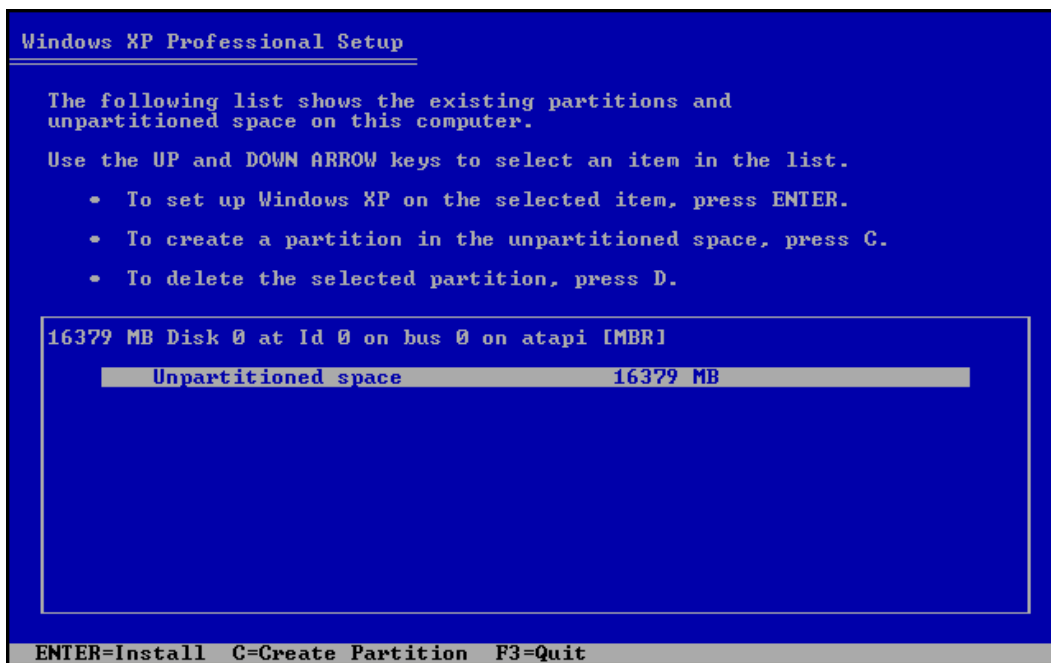
  • To go back to the previous screen without
    deleting the partition, press ESC.

ENTER=Continue  ESC=Cancel
```

Press the **L** key.



Press the **C** key.



Type **5000** in the “Create partition of size <in MB>:” field.

Press the **Enter** key.

```
Windows XP Professional Setup
-----
You asked Setup to create a new partition on
16379 MB Disk 0 at Id 0 on bus 0 on atapi [MBR].

• To create the new partition, enter a size below and
  press ENTER.
• To go back to the previous screen without creating
  the partition, press ESC.

The minimum size for the new partition is      8 megabytes (MB).
The maximum size for the new partition is 11374 megabytes (MB).
Create partition of size (in MB): 5000

ENTER=Create  ESC=Cancel
```

Press the **down arrow** key to select “Unpartitioned space”.

Press the **C** key.

Create another partition of 5000 MB.

Repeat this process one more time. You will have three partitions of 5000 MB each.

```
Windows XP Professional Setup
-----
The following list shows the existing partitions and
unpartitioned space on this computer.

Use the UP and DOWN ARROW keys to select an item in the list.

• To set up Windows XP on the selected item, press ENTER.
• To create a partition in the unpartitioned space, press C.
• To delete the selected partition, press D.

16379 MB Disk 0 at Id 0 on bus 0 on atapi [MBR]
C:  Partition1 [New (Raw)]           4997 MB ( 4996 MB free)
   Unpartitioned space              11382 MB

ENTER=Install  C=Create Partition  F3=Quit
```

Select **C: Partition1** and press the **Enter** key.

```
Windows XP Professional Setup

The following list shows the existing partitions and
unpartitioned space on this computer.

Use the UP and DOWN ARROW keys to select an item in the list.

• To set up Windows XP on the selected item, press ENTER.
• To create a partition in the unpartitioned space, press C.
• To delete the selected partition, press D.

16379 MB Disk 0 at Id 0 on bus 0 on atapi [MBR]

C: Partition1 [New <Raw>]      4997 MB < 4996 MB free>
E: Partition2 [New <Raw>]      4997 MB < 4996 MB free>
F: Partition3 [New <Raw>]      4997 MB < 4996 MB free>
Unpartitioned space           1381 MB
Unpartitioned space           8 MB

ENTER=Install  D=Delete Partition  F3=Quit
```

Select "Format the partition using the NTFS file system".

Do not select "Format the partition using the NTFS file system <Quick>".

Press the **Enter** key.

```
Windows XP Professional Setup

A new partition for Windows XP has been created on
16379 MB Disk 0 at Id 0 on bus 0 on atapi [MBR].

This partition must now be formatted.

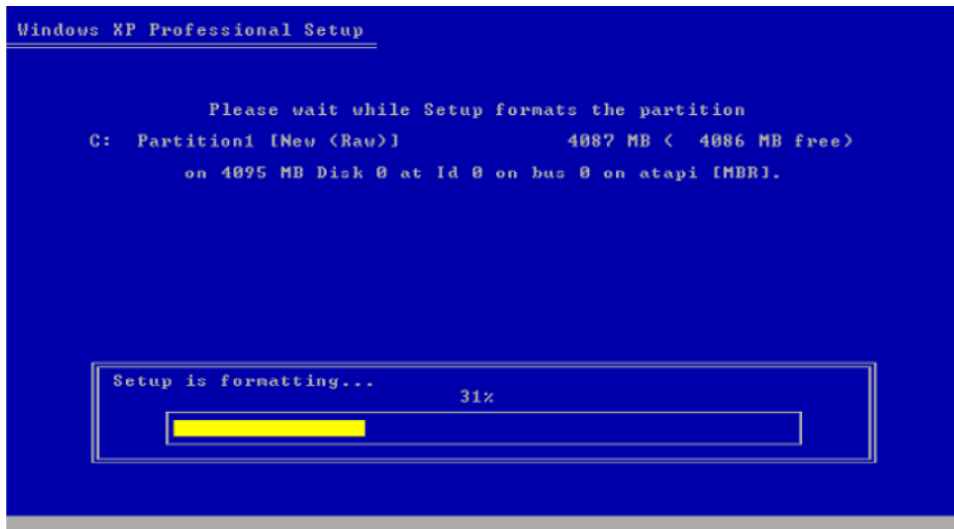
From the list below, select a file system for the new partition.
Use the UP and DOWN ARROW keys to select the file system you want,
and then press ENTER.

If you want to select a different partition for Windows XP,
press ESC.

Format the partition using the NTFS file system <Quick>
Format the partition using the FAT file system <Quick>
Format the partition using the NTFS file system
Format the partition using the FAT file system

ENTER=Continue  ESC=Cancel
```

The “Please wait while Setup formats the partition” screen appears.



The system will restart automatically.

After the system restarts, the message “Press Any Key to Boot from CD” appears.

Do not press any keys.

The installation should continue without prompting you for any settings.

The system will restart automatically.

After the system restarts, the message “Press Any Key to Boot from CD” appears.

Do not press any keys.

Step 8

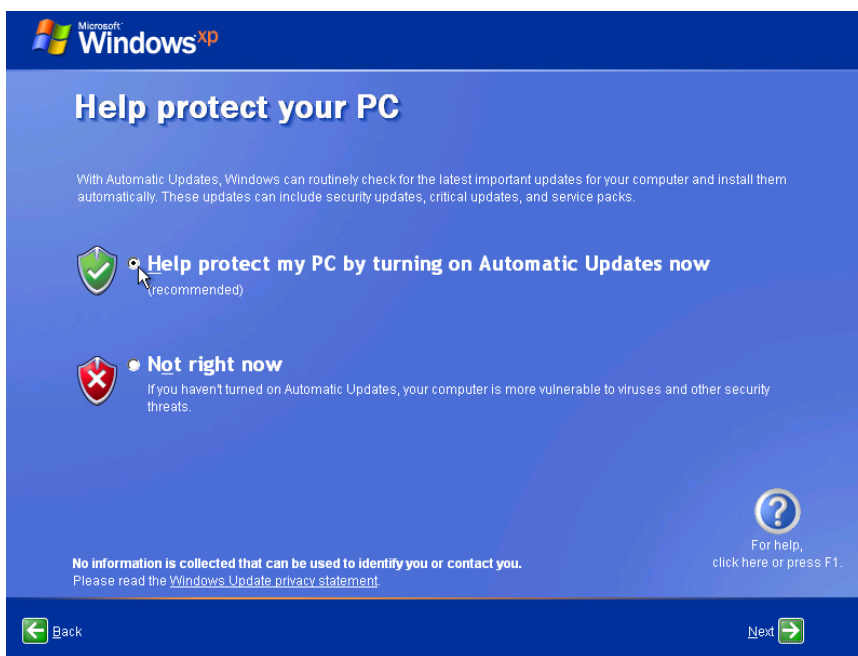
The “Welcome to Microsoft Windows” screen appears.

Click **Next**.



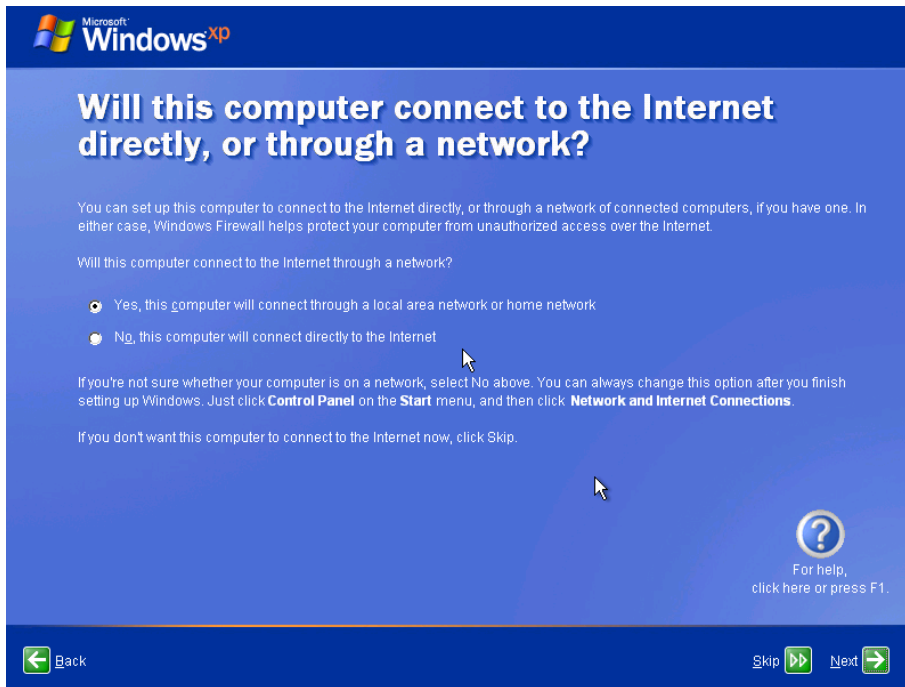
Select the **Help protect my PC by turning on Automatic Updates now** radio button.

Click **Next**.

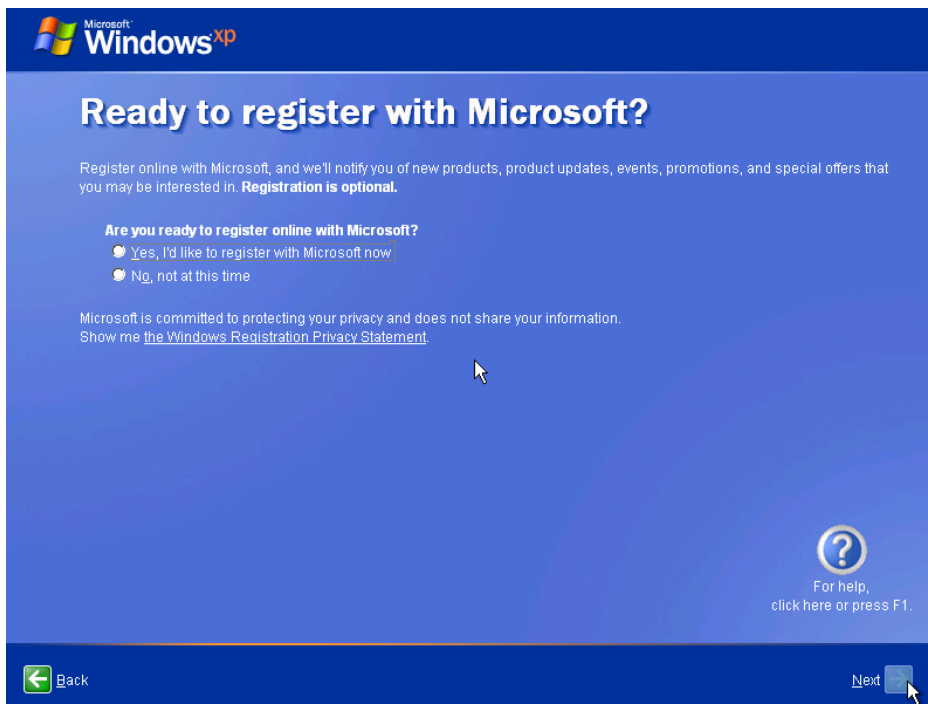


Select the **Yes, this computer will connect through the local area network or home network** radio button.

Click **Next**.

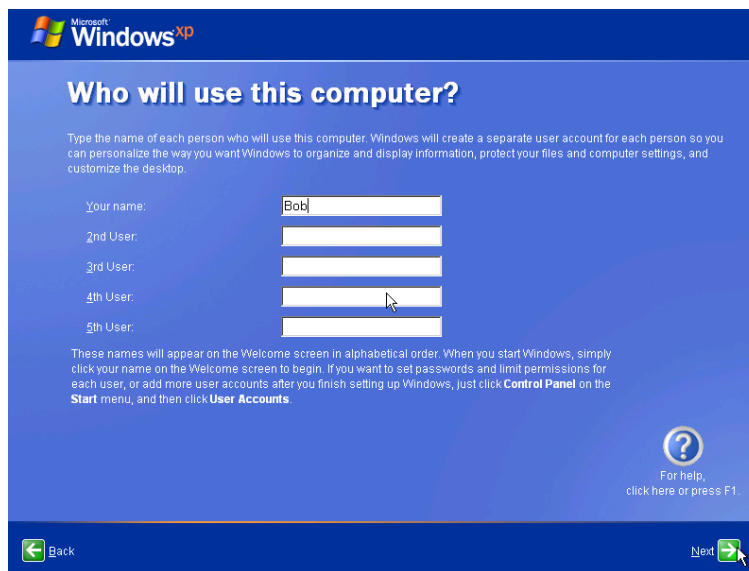


Select the **No, not at this time** radio button, and then click **Next**.



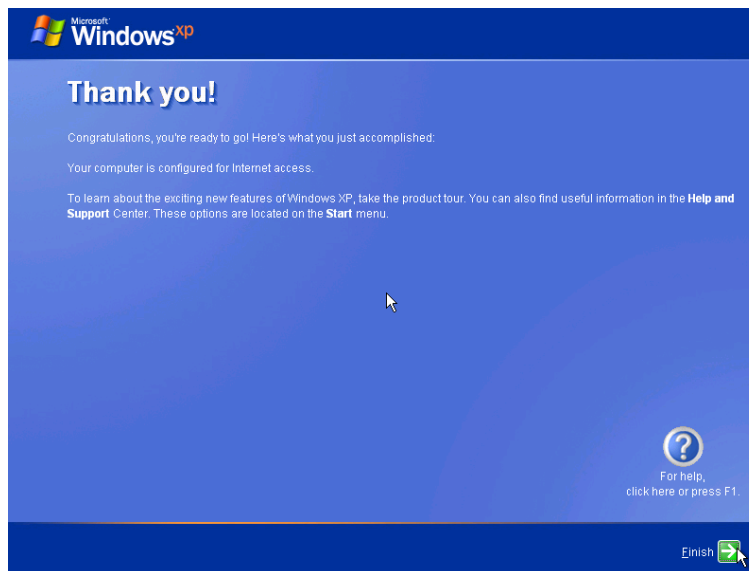
Type the name provided by your instructor in the “Your name:” field.

Click **Next**.



The “Thank you!” screen appears.

Click **Finish**.



What was the name of the file used to automate the installation located on the floppy disk?

How do you think automating the installation will help the IT Department if they have to repeat the procedure on 100 computers?