

IT Essentials 5.0

5.3.1.11 Lab - Install Third-Party Software in Windows 7

Introduction

Print and complete this lab.

In this lab, you will install and remove a third party software application supplied by your instructor. You will install the Packet Tracer Windows application.

Recommended Equipment

The following equipment is required for this exercise:

- A computer system that is using Windows 7
- A flash drive or CD with the latest Packet Tracer Windows install package

Step 1

Log on to the computer with the Administrator account.

Use Windows Explorer to navigate to the Packet Tracer folder.

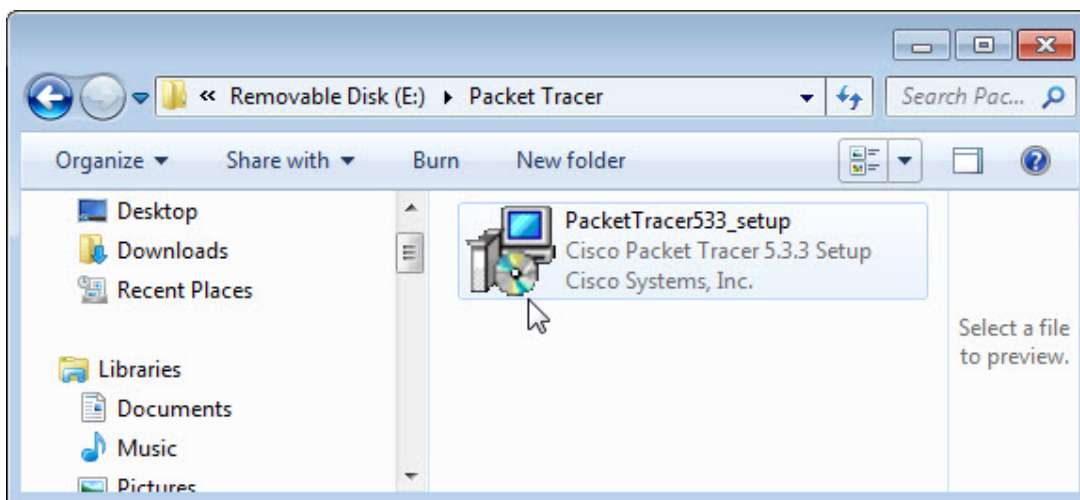
If installing from a CD, place the CD into the CD drive.

Navigate to D:\Packet Tracer.

If installing from a flash drive, place the flash drive into a USB port.

Navigate to E:\Packet Tracer.

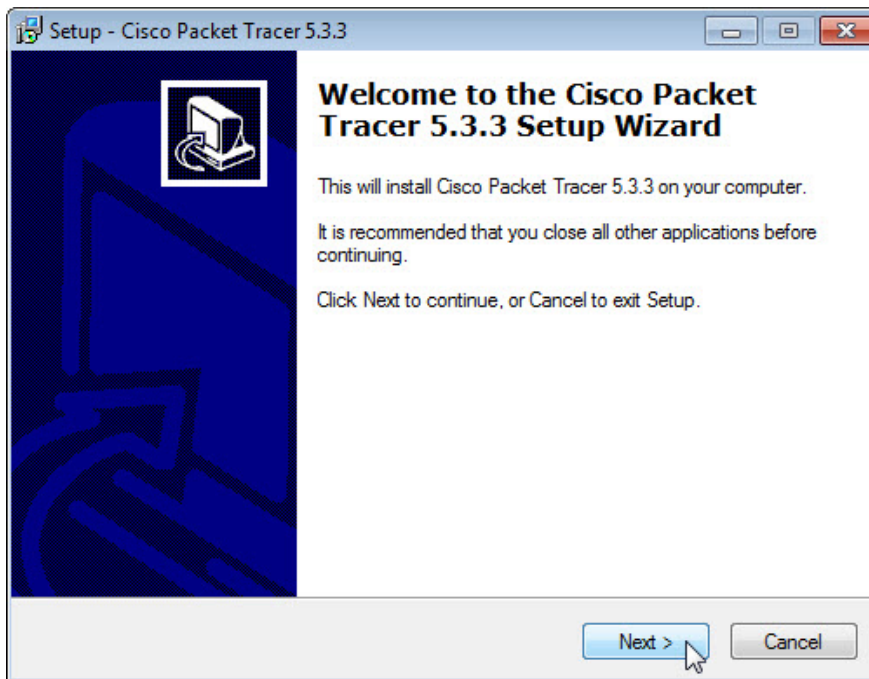
Locate the PacketTracer###_setup.exe (where ### is the version number) application in the CD or flash drive. Click the **PacketTracer533_setup.exe** icon to start the installation process of the Packet Tracer application. You may need to double-click the icon to start the installation.



If the "User Account Control" window appears click **Yes**.

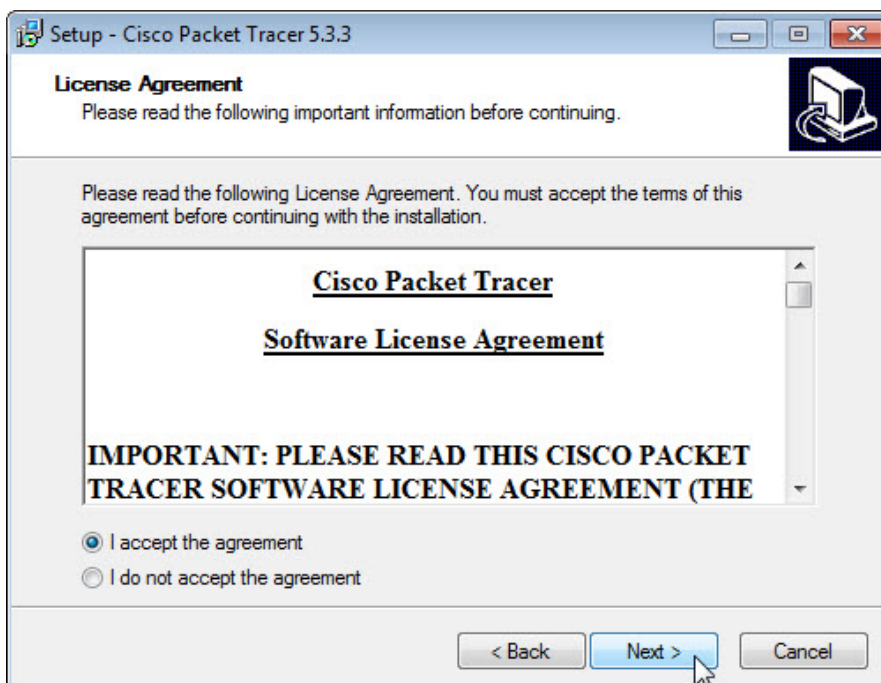
Step 2

The "Setup – Cisco Packet Tracer 5.3.3" window opens.



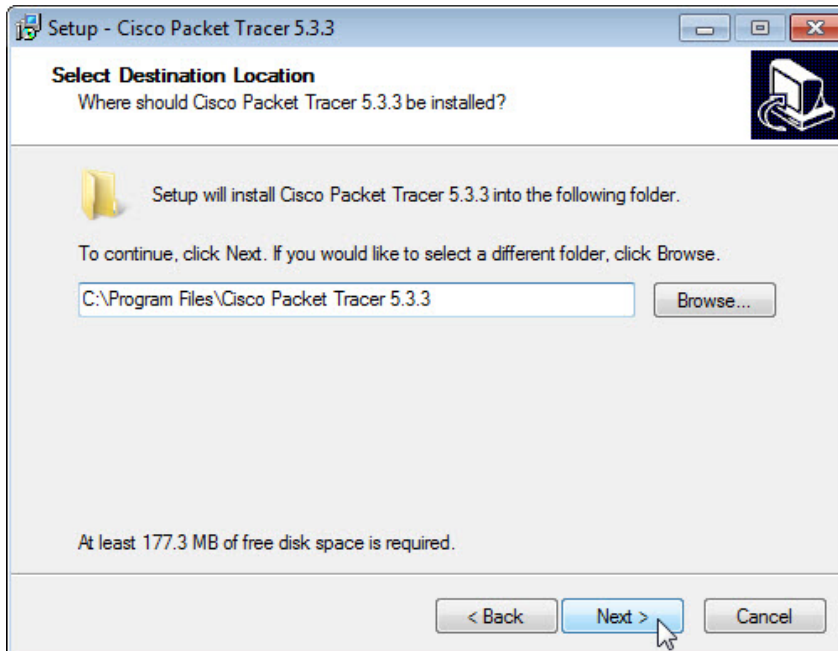
Click **Next**.

The "License Agreement" screen appears.



Select **I accept the agreement** and then click **Next**.

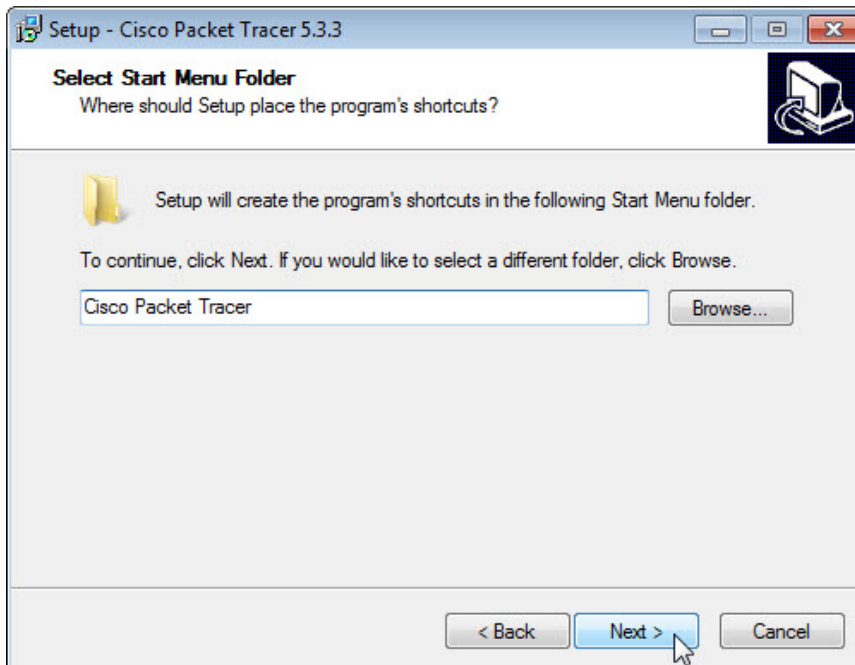
The "Select Destination Location" screen appears. Keep the default settings.



What is the default location for Packet Tracer?

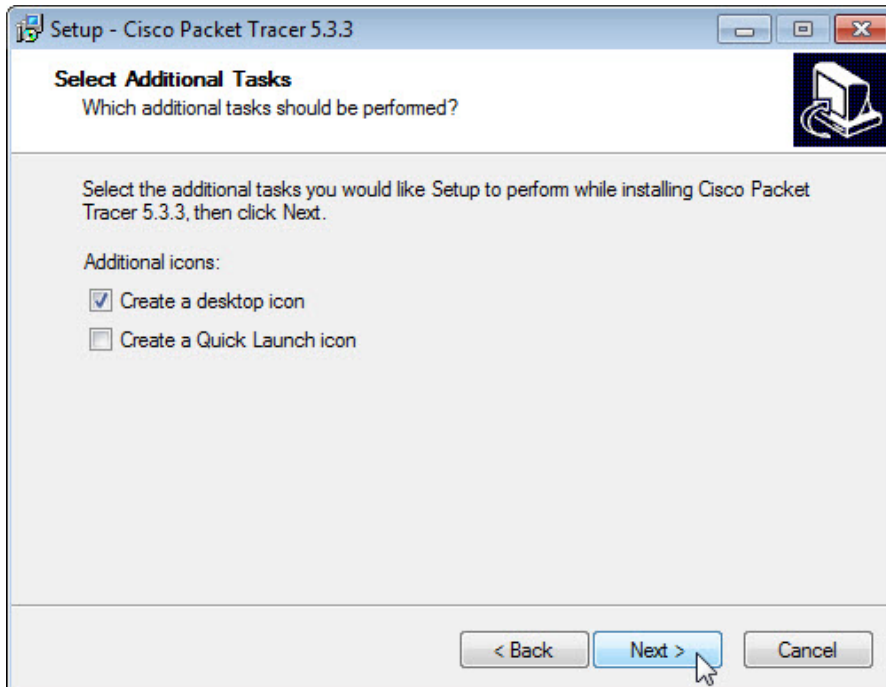
Click **Next**.

The "Select Start Menu Folder" screen appears. Keep the default settings.



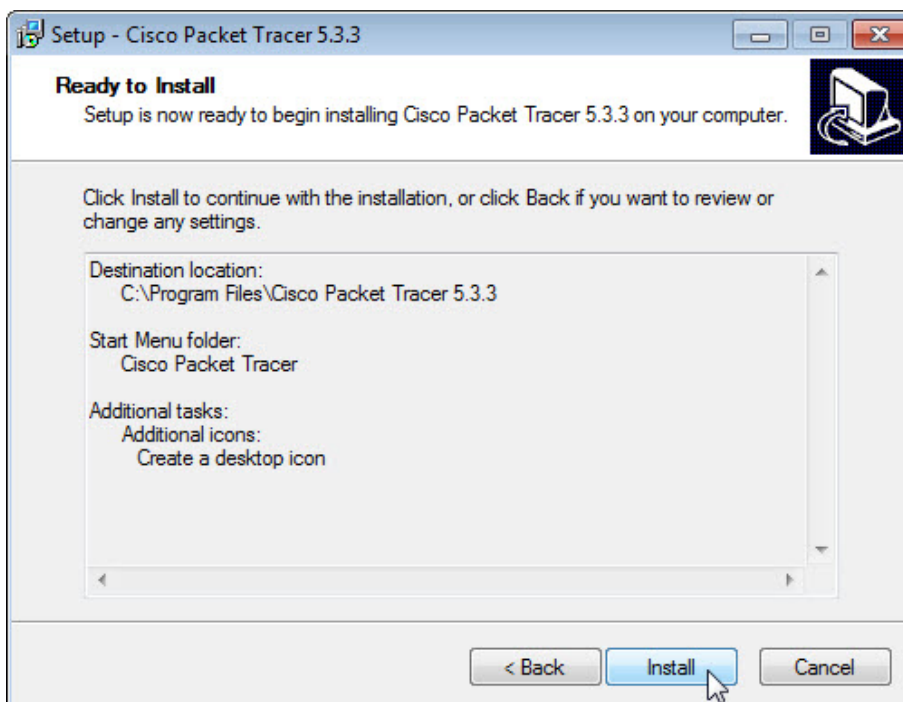
Click **Next**.

The "Select Additional Tasks" screen appears. Keep the default settings.



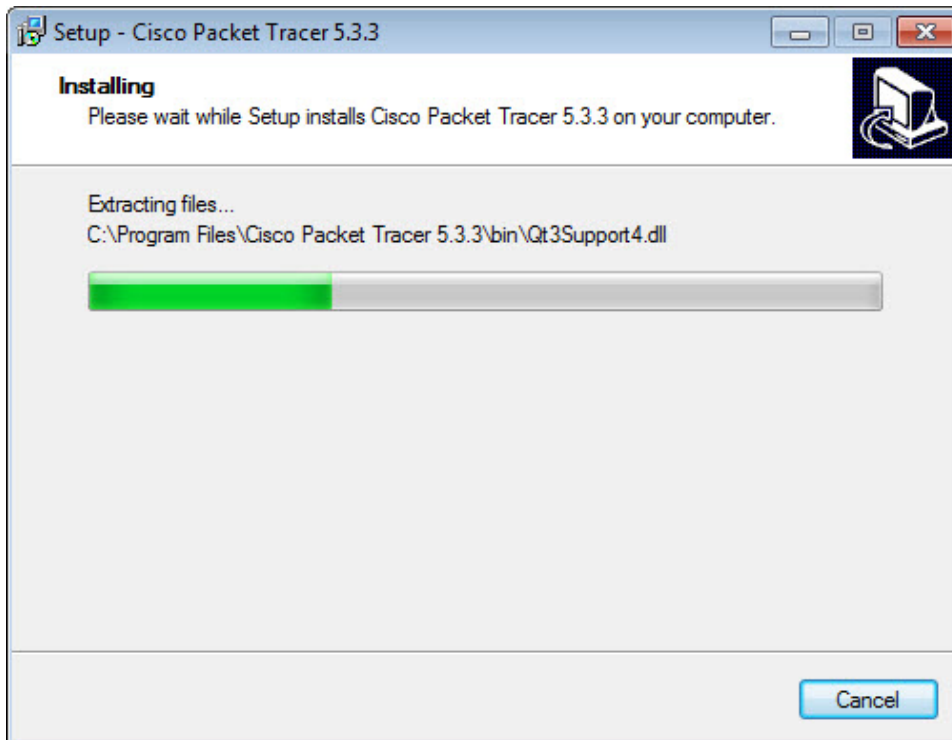
Click **Next**.

The “Ready to Install” screen appears.

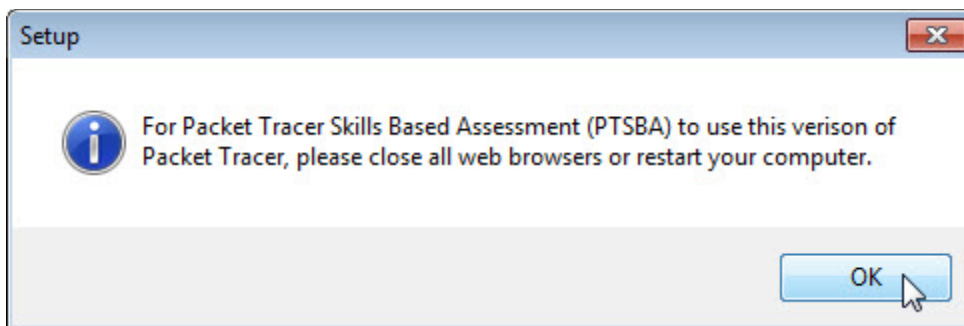


Click **Install**.

The “Installing” progress screen appears.

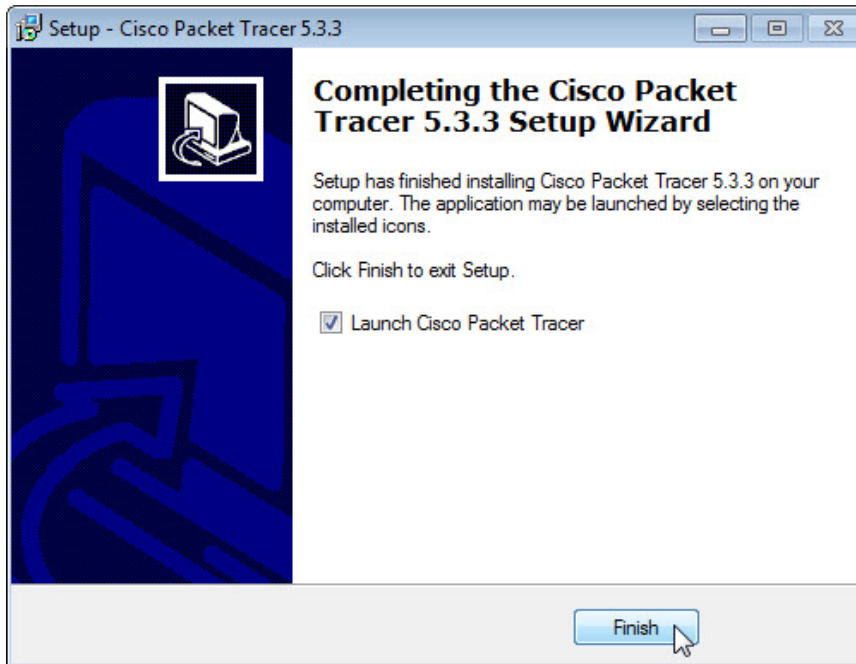


If an information screen appears, click **OK**.



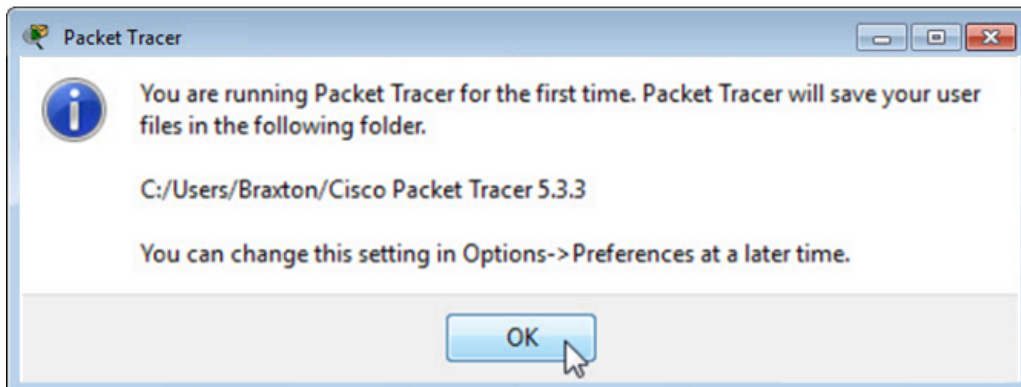
Do not close any programs or restart the computer.

The "Completing the Cisco Packet Tracer 5.3.3 Setup Wizard" screen appears.



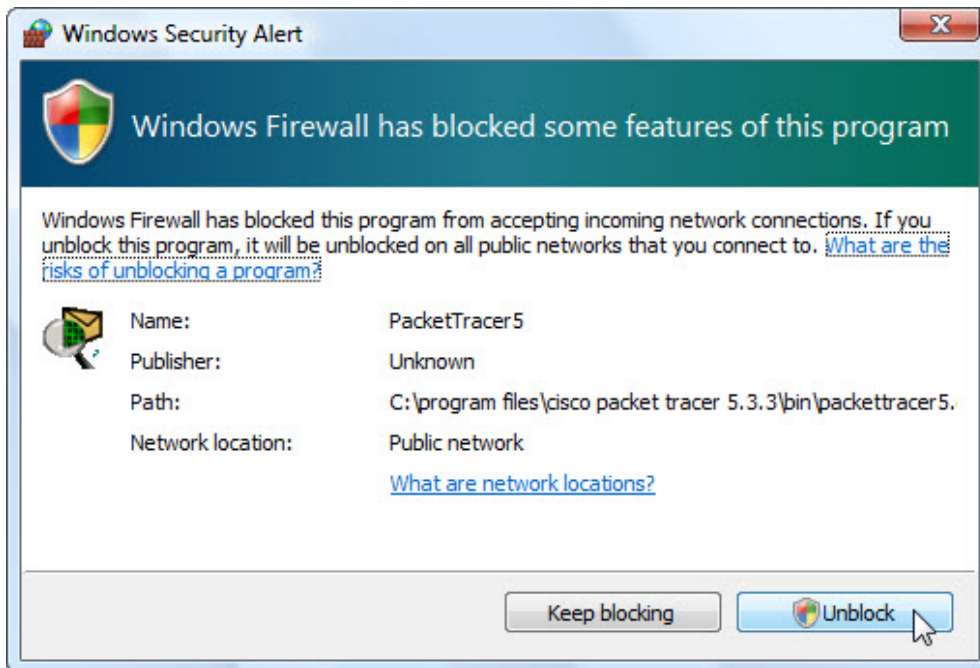
Click **Finish**.

The “You are running Packet Tracer for the first time” screen appears.

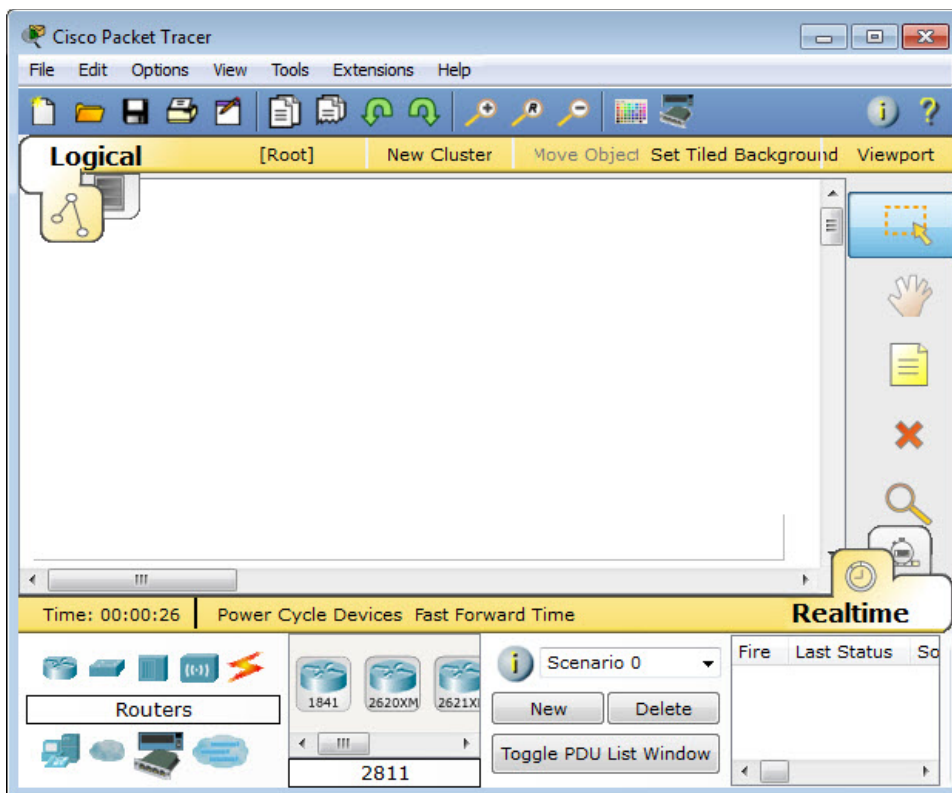


Click **OK**.

If Windows Security Alert appears, click **Unblock**.



Packet Tracer starts.

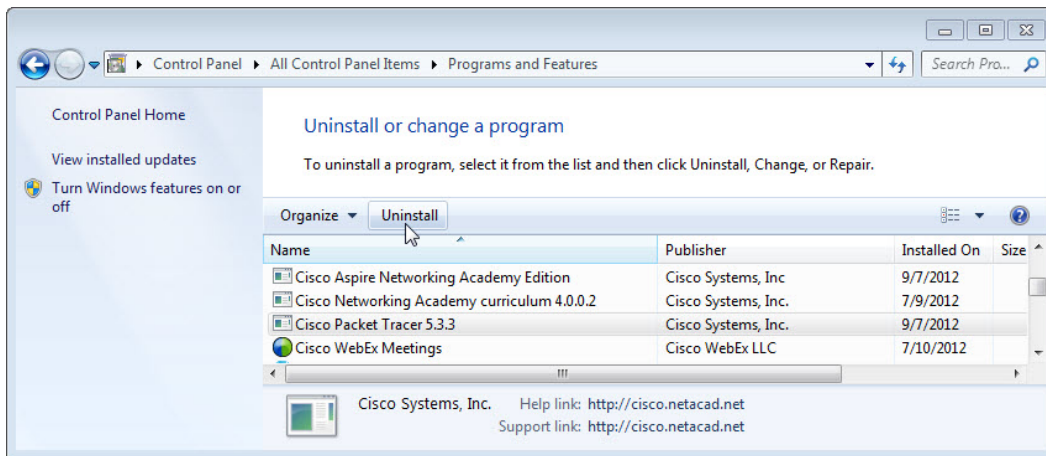


Close all open windows.

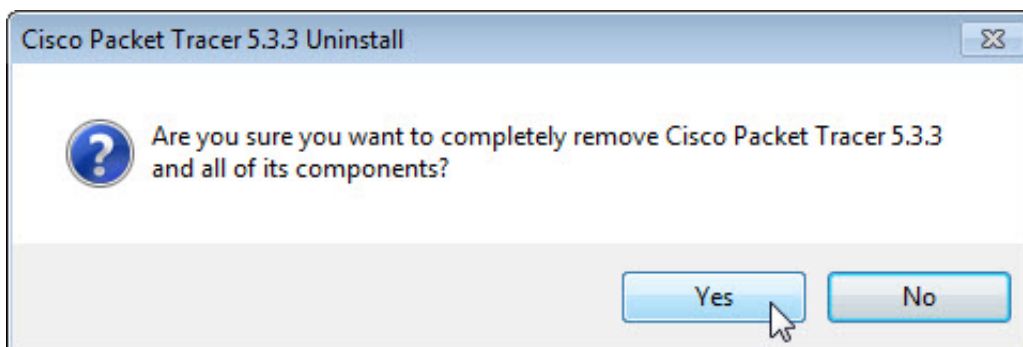
Step 3

Log on to the computer with the Administrator account.

To uninstall a program, choose **Start > Control Panel > Programs and Features**. Click **Cisco Packet Tracer** in the list.

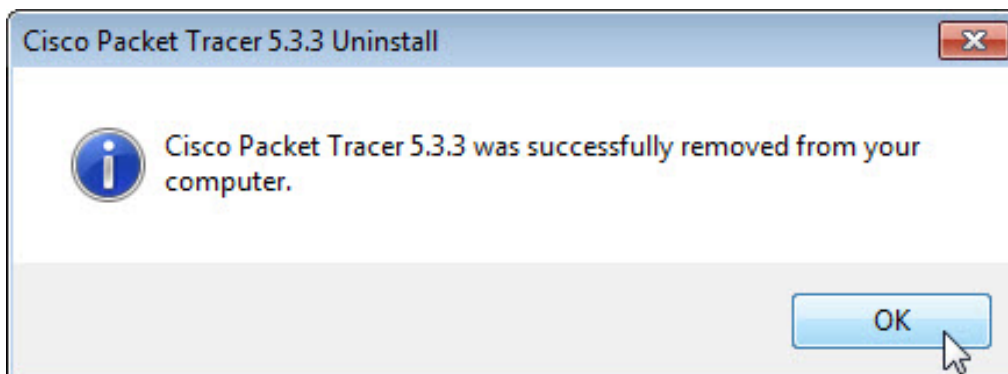


Click **Uninstall**.

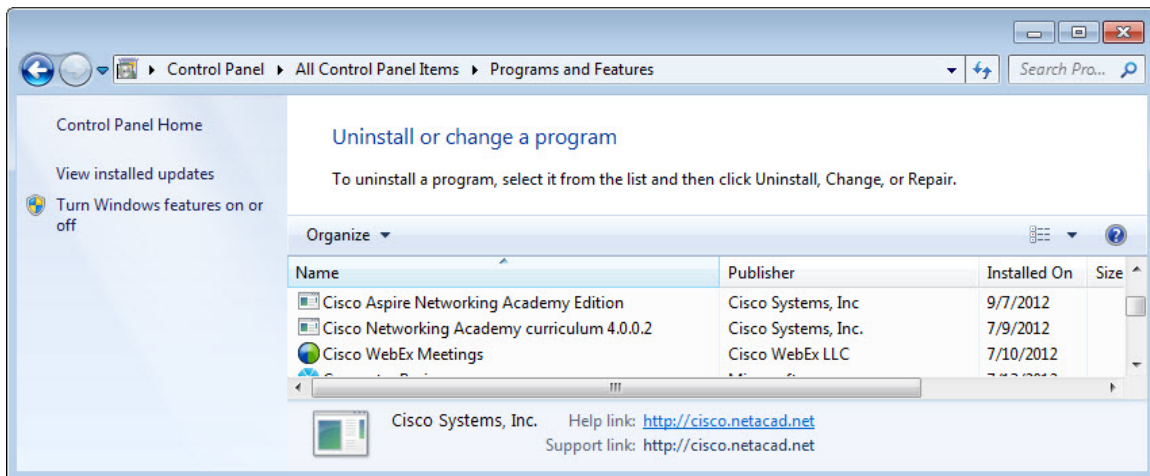


Click **Yes** to confirm the removal.

When the successfully removed screen appears, click **OK**.



After the application removal process, the Programs and Features window no longer shows Cisco Packet Tracer in the list.



Why does Microsoft recommend using Uninstall or change a program to remove an installed application?