

IT Essentials 5.0

5.3.1.5 Lab - Task Manager (Managing Processes) in Windows 7

Introduction

Print and complete this lab.

In this lab, you will explore Task Manager and manage processes from within Task Manager.

Recommended Equipment

The following equipment is required for this exercise:

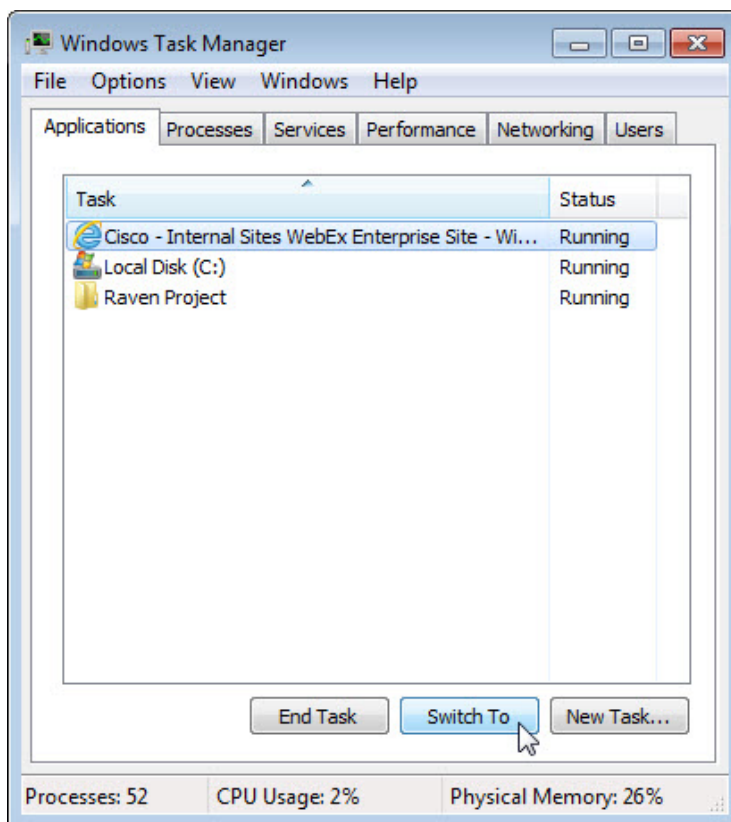
- A computer running Windows 7

Step 1

Log on to Windows as an administrator.

Open a browser and a folder.

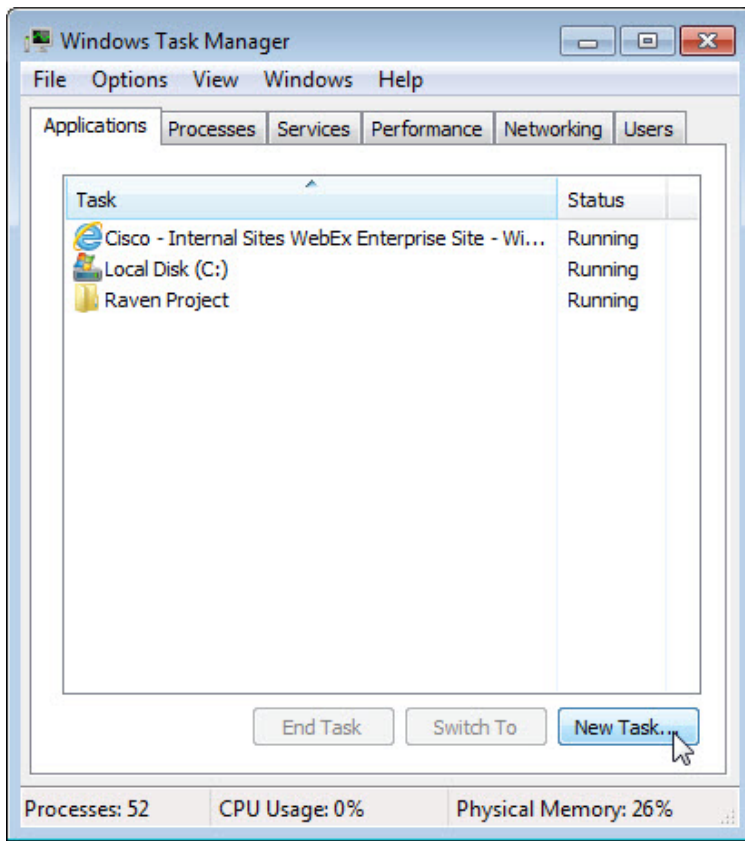
Click on the desktop and press **Ctrl-Alt-Delete > Start Task Manager > Applications** tab.



Select the open browser and then click **Switch To**.

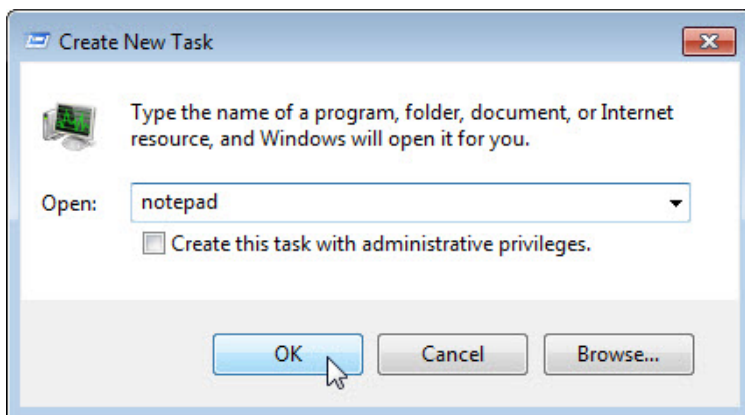
What happened to the browser?

Bring Task Manager to the front of the desktop.



Click **New Task**.

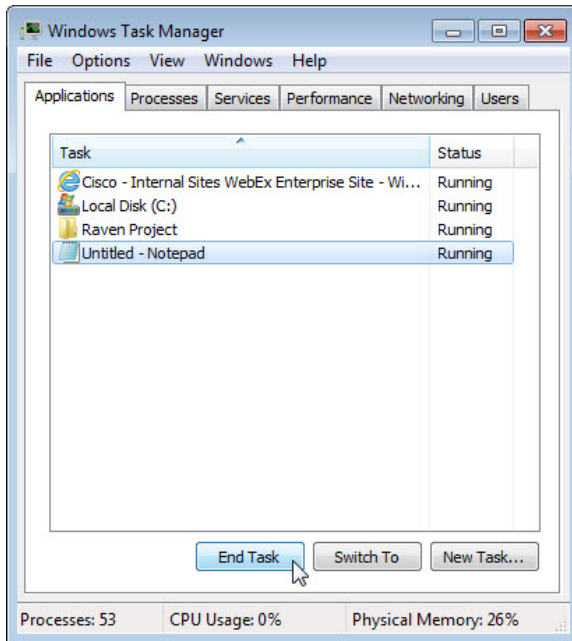
The "Create New Task" window opens.



In the Open field type **Notepad** and then click **OK**.

What happens?

Navigate back to Windows Task Manager.

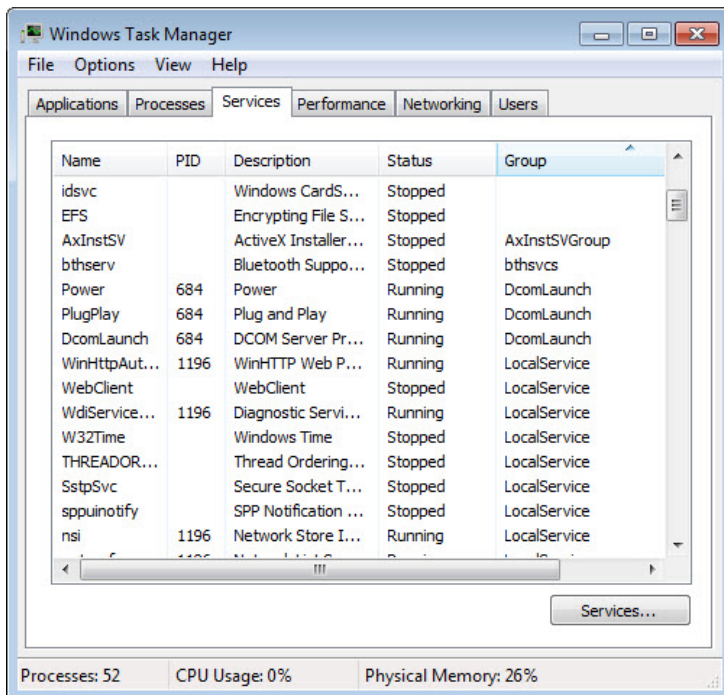


Select **Notepad** and then click **End Task**.

What happens?

Step 2

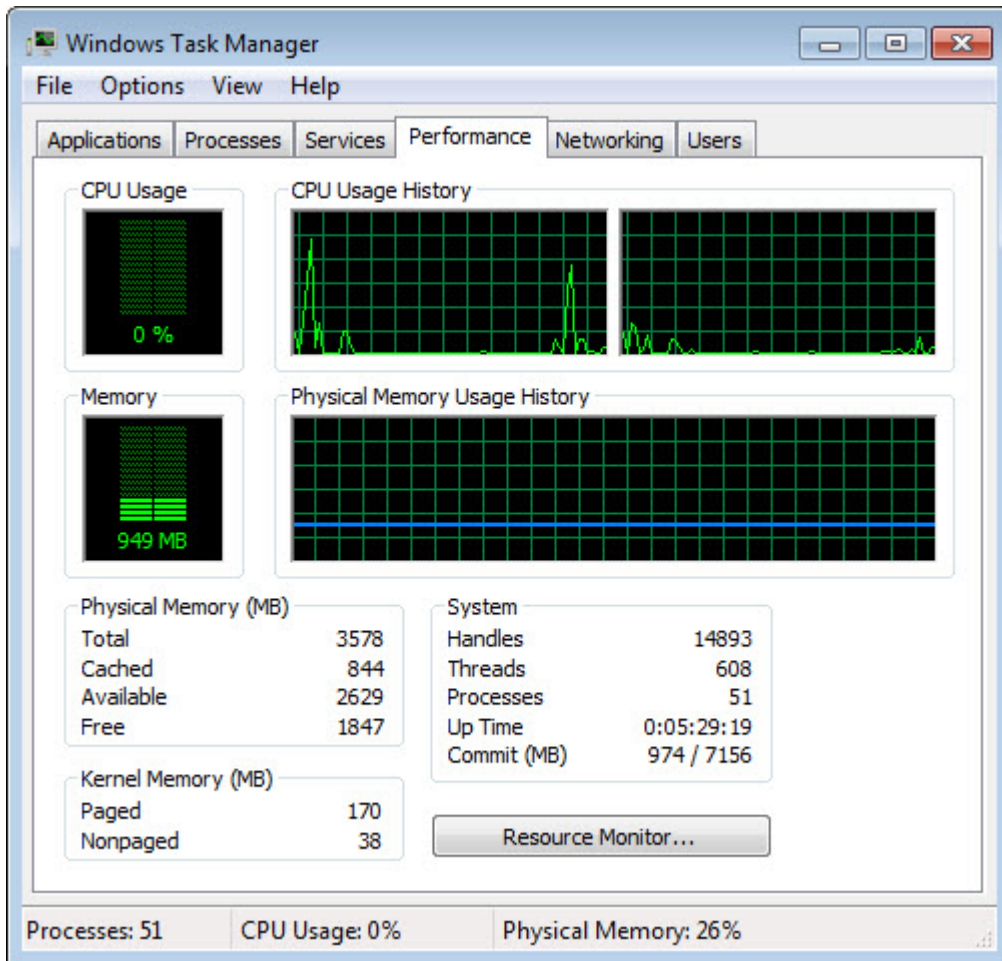
Click the **Services** tab.



What is the Status of all services?

Step 3

Click the **Performance** tab.



How many Threads are running?

How many Processes are running?

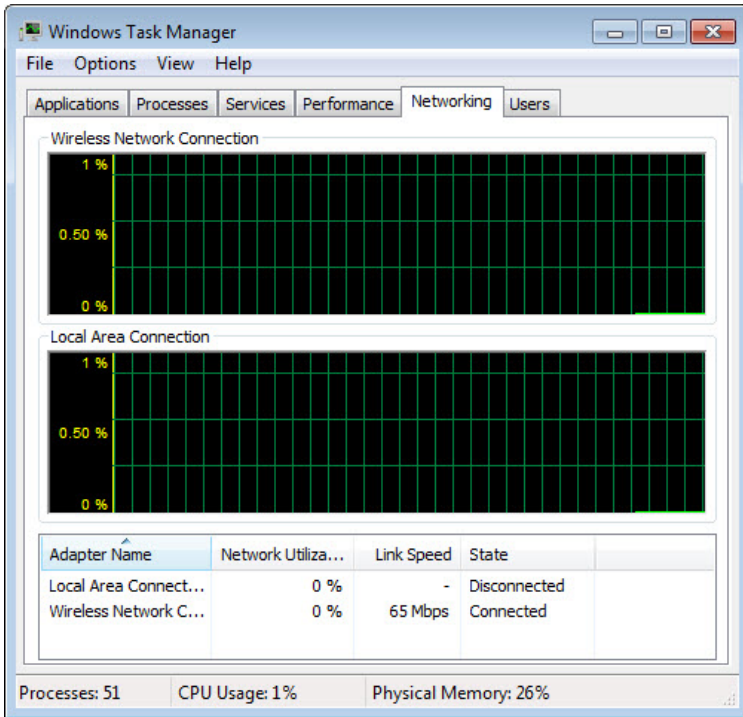
What is the Total Physical Memory (MB)?

What is the Available Physical Memory (MB)?

How much Physical Memory (MB) is being used by the system?

Step 4

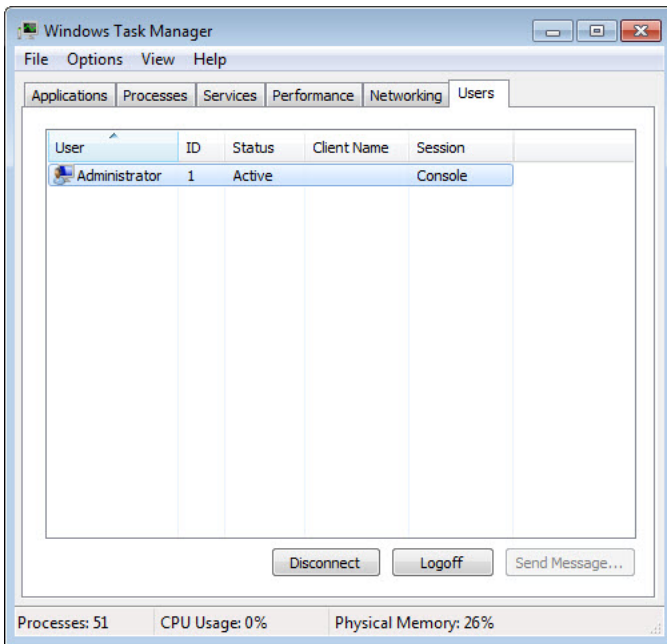
Click the **Networking** tab.



What is the Link Speed?

Step 5

Click the **Users** tab.

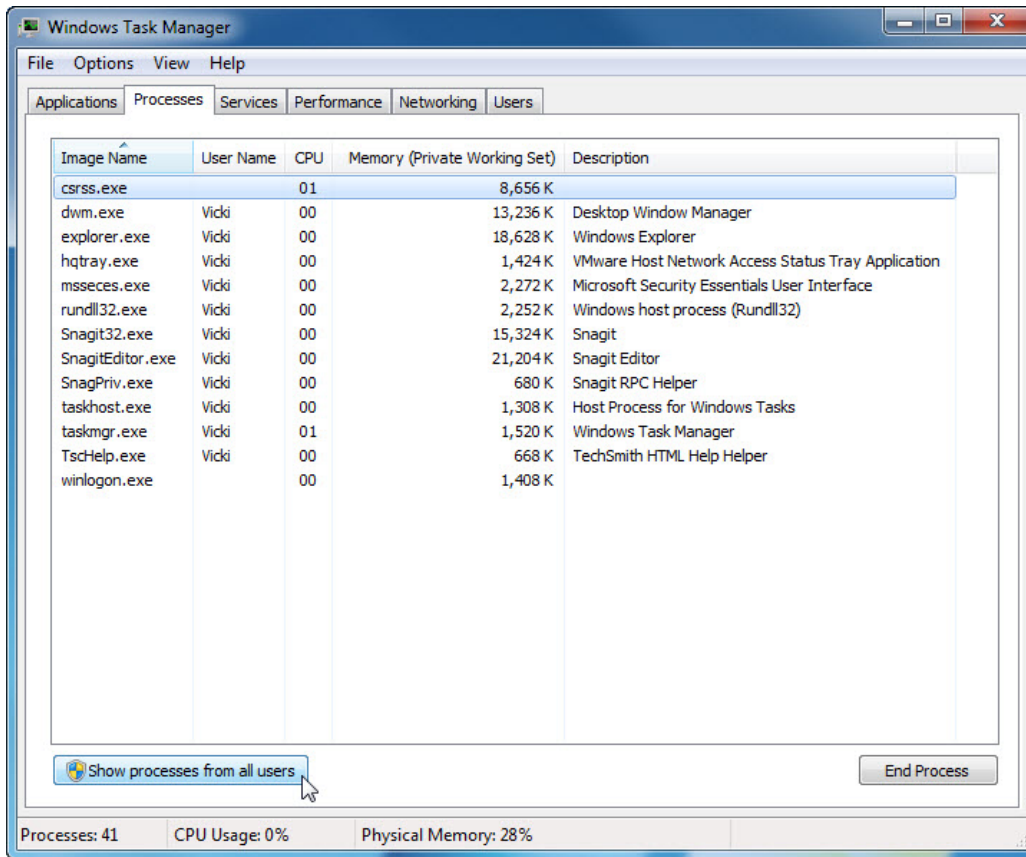


List all users and their Status.

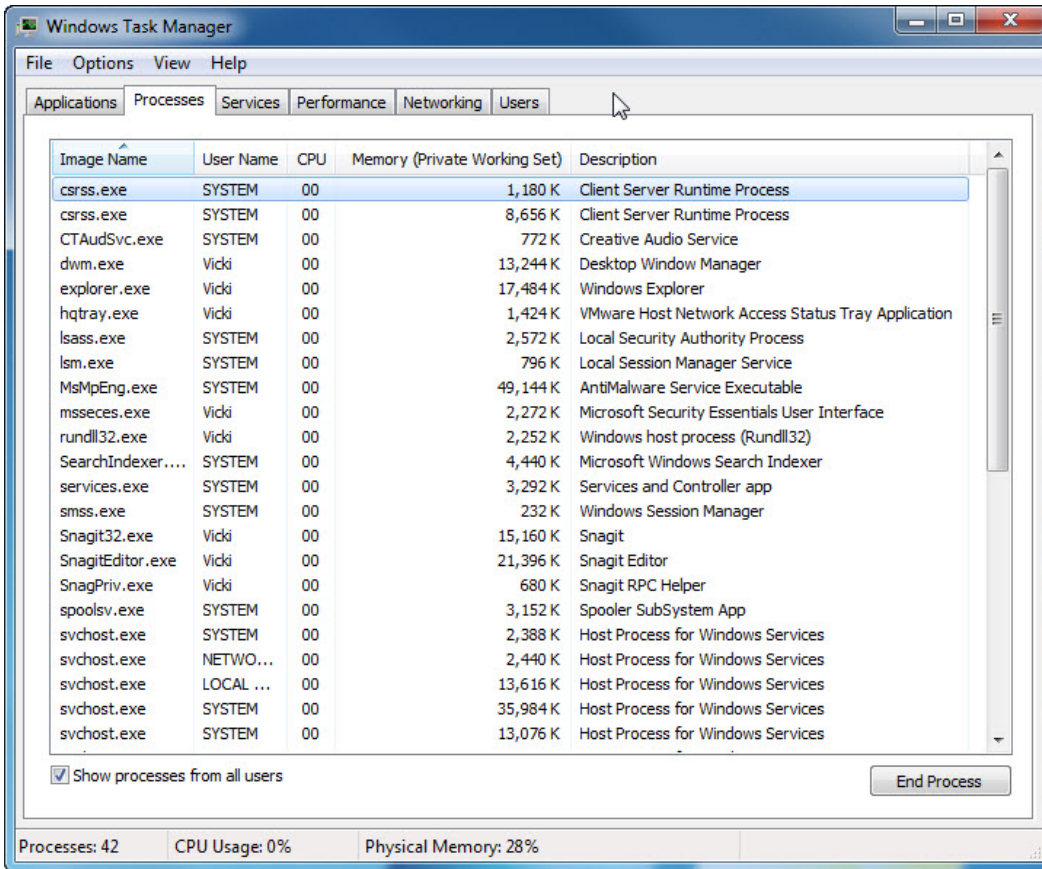
What actions can you perform on the user from this window?

Step 6

Click the **Processes** tab.

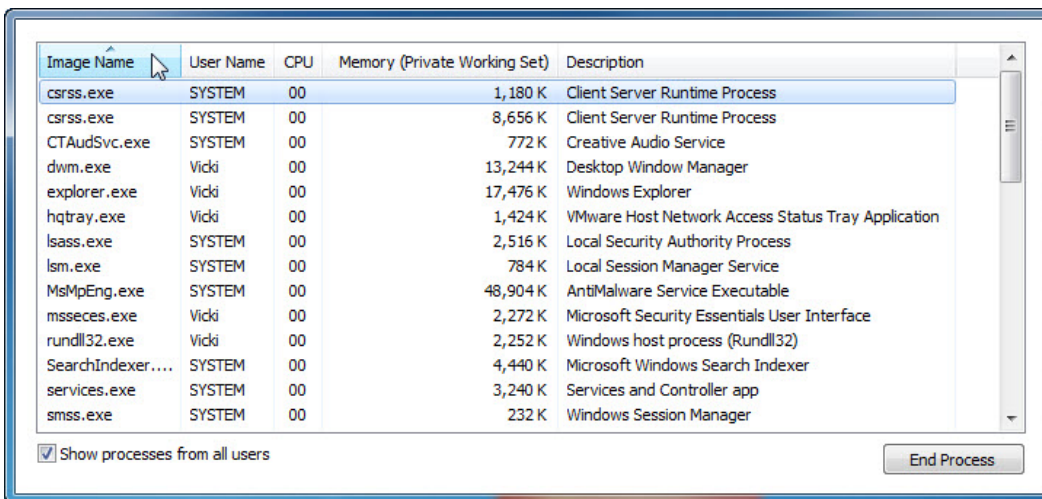


Click **Show processes from all users**.



Double-click the border around the tabs.

Windows Task Manager is now in compact mode.



Click Image Name.

Image Name	User Name	CPU	Memory (Private Working Set)	Description
WUDFHost.exe	LOCAL ...	00	1,168 K	Windows Driver Foundation - User-mode Driver Fra...
wmpnetwk.exe	NETWO...	00	3,484 K	Windows Media Player Network Sharing Service
winlogon.exe	SYSTEM	00	1,376 K	Windows Logon Application
wininit.exe	SYSTEM	00	712 K	Windows Start-Up Application
vmware-usbarb...	SYSTEM	00	1,032 K	VMware USB Arbitration Service
vmware-authd....	SYSTEM	00	3,332 K	VMware Authorization Service
vmnetdhcp.exe	SYSTEM	00	744 K	VMware VMnet DHCP service
vmnat.exe	SYSTEM	00	840 K	VMware NAT Service
TscHelp.exe	Vicki	00	668 K	TechSmith HTML Help Helper
taskmgr.exe	Vicki	00	1,816 K	Windows Task Manager
taskhost.exe	Vicki	00	1,784 K	Host Process for Windows Tasks
System Idle Pro...	SYSTEM	99	12 K	Percentage of time the processor is idle
System	SYSTEM	00	40 K	NT Kernel & System
svchost.exe	LOCAL ...	00	1,648 K	Host Process for Windows Services

Show processes from all users End Process

Click **Image Name** again.

What effect does this have on the columns?

Image Name	User Name	CPU	Memory (Private Working Set)	Description
System Idle Pro...	SYSTEM	99	12 K	Percentage of time the processor is idle
System	SYSTEM	00	40 K	NT Kernel & System
smss.exe	SYSTEM	00	232 K	Windows Session Manager
TscHelp.exe	Vicki	00	668 K	TechSmith HTML Help Helper
SnagPriv.exe	Vicki	00	680 K	Snagit RPC Helper
wininit.exe	SYSTEM	00	712 K	Windows Start-Up Application
vmnetdhcp.exe	SYSTEM	00	744 K	VMware VMnet DHCP service
CTAudSvc.exe	SYSTEM	00	772 K	Creative Audio Service
lsm.exe	SYSTEM	00	796 K	Local Session Manager Service
vmnat.exe	SYSTEM	00	840 K	VMware NAT Service
vmware-usbarb...	SYSTEM	00	1,032 K	VMware USB Arbitration Service
WUDFHost.exe	LOCAL ...	00	1,168 K	Windows Driver Foundation - User-mode Driver Fra...
csrss.exe	SYSTEM	00	1,180 K	Client Server Runtime Process
winlogon.exe	SYSTEM	00	1,376 K	Windows Logon Application

Show processes from all users End Process

Click **Memory (Private Working Set)**.

What affect does this have on the columns?

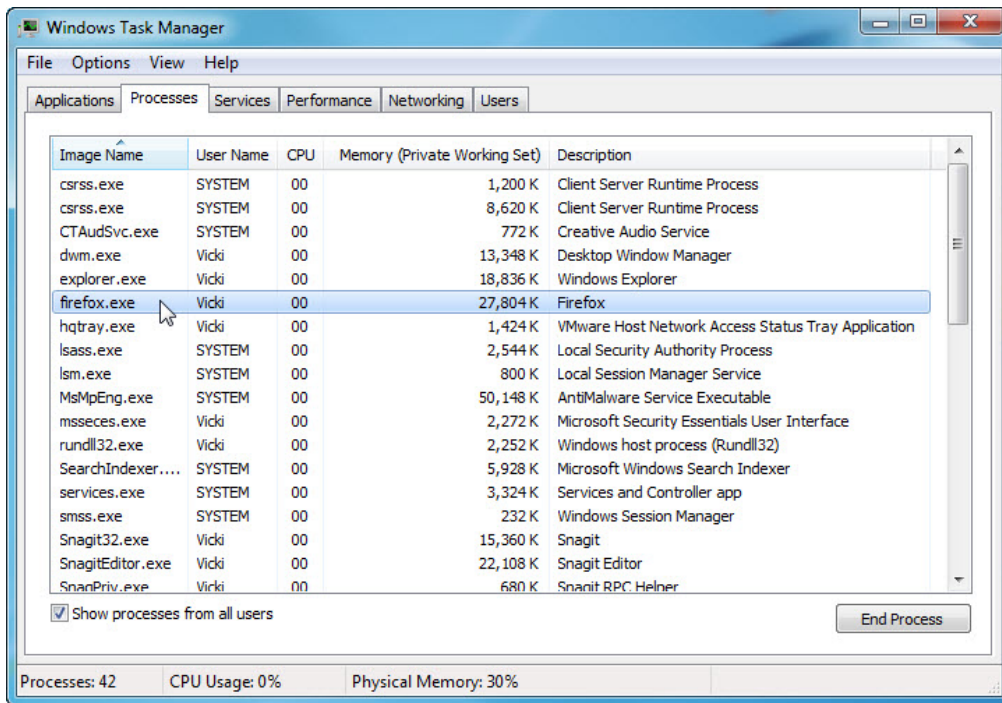
Double-click the outside border again to return to tabs mode.

Step 7

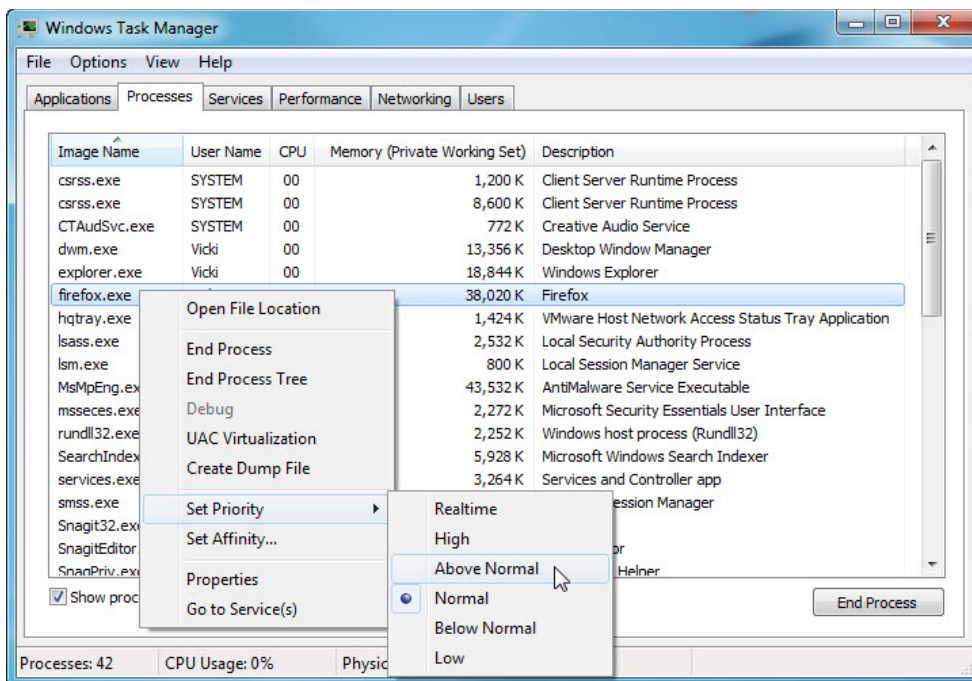
Open a browser.

Note: Firefox is used in this lab. However, any browser will work. Just substitute your browser name whenever you see the word Firefox.

Return to the **Windows Task Manager**.



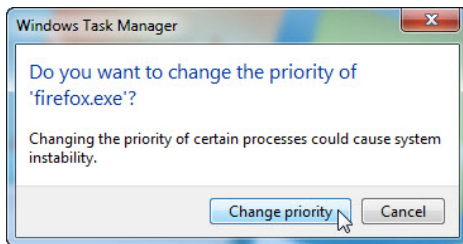
Click **Image Name** so the list is in alphabetical order, then locate and select **firefox.exe**.



Right-click **firefox.exe** > **Set Priority**.

What is the default priority for the browser?

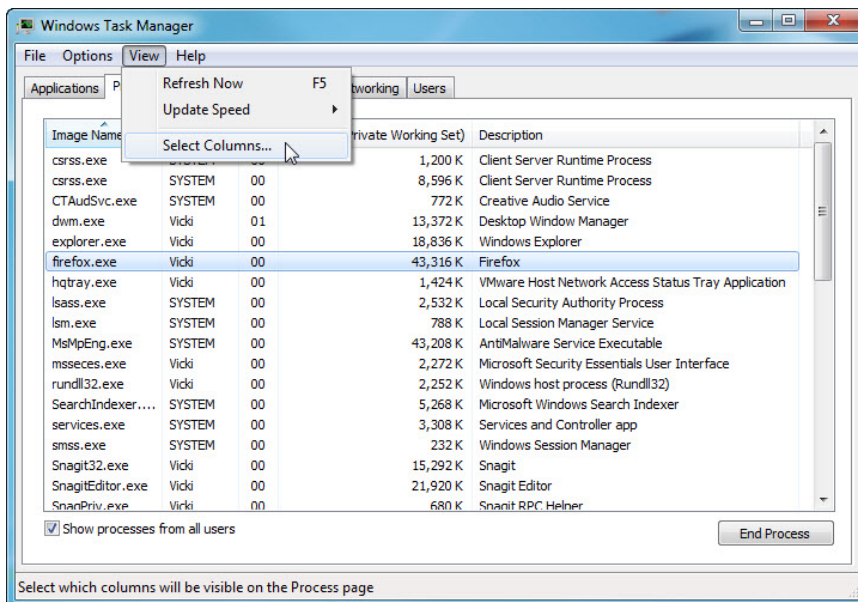
Set the priority to **Above Normal**.



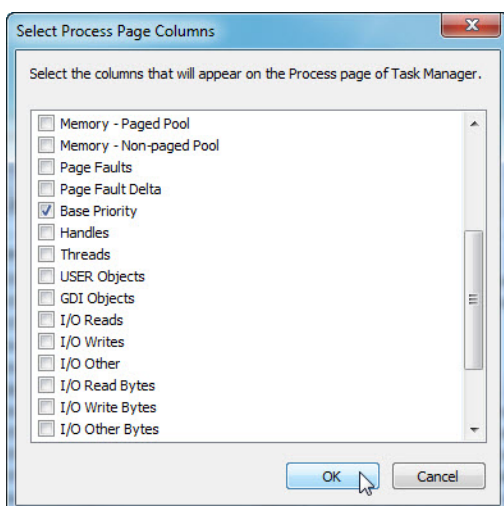
Click **Change priority** to the Windows Task Manager warning message.

Step 8

Click **View > Select Columns**.

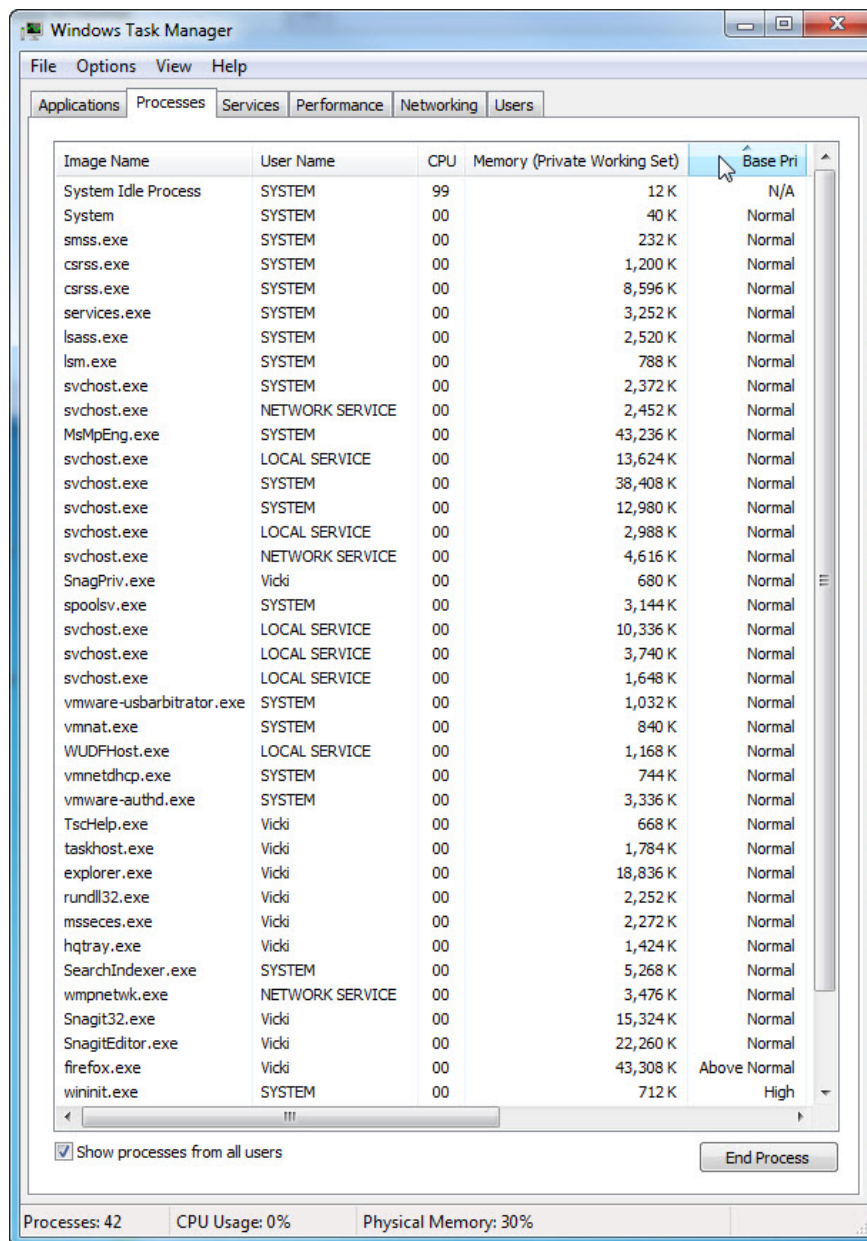


The "Select Process Page Columns" window appears.



Place a check mark next to **Base Priority** > click **OK**.

Expand the width of the “Windows Task Manager” so the “Base Priority” column is visible.



Click **Base Pri**.

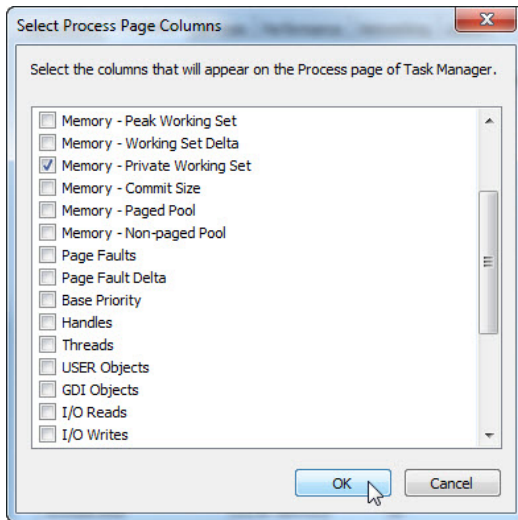
Which image name has a base priority of N/A?

List the image name that has a base priority of Above Normal?

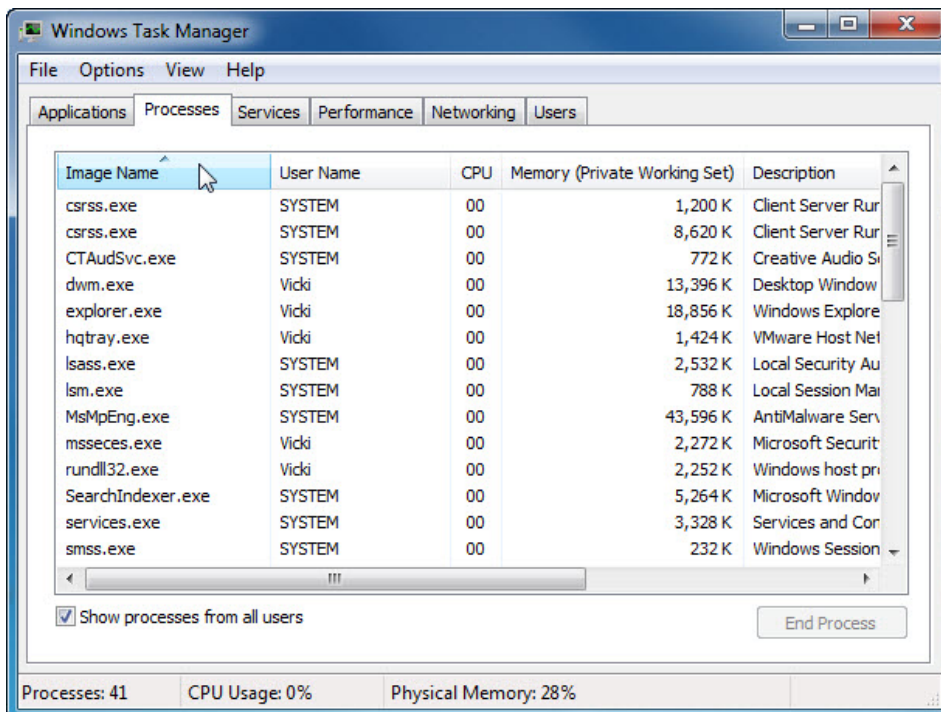
Step 9

Reset Firefox.exe base priority to normal. Right-click **firefox.exe** > **Set Priority** > **Normal** > **Change priority**.

Click **View > Select Columns > uncheck Base Priority > OK**.



Close Firefox.



Is Firefox listed as a process?

Close all open windows.