

IT Essentials 5.0

5.3.1.6 Lab - Task Manager (Managing Processes) in Windows Vista

Introduction

Print and complete this lab.

In this lab, you will explore Task Manager and manage processes from within Task Manager.

Recommended Equipment

The following equipment is required for this exercise:

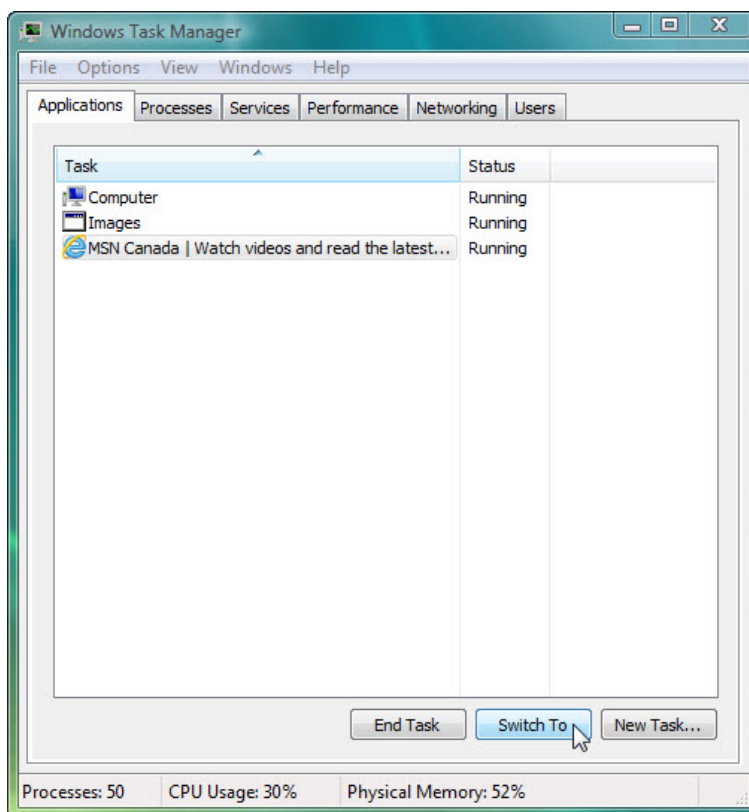
- A computer running Windows Vista

Step 1

Log on to Windows as an administrator.

Open a browser and a folder.

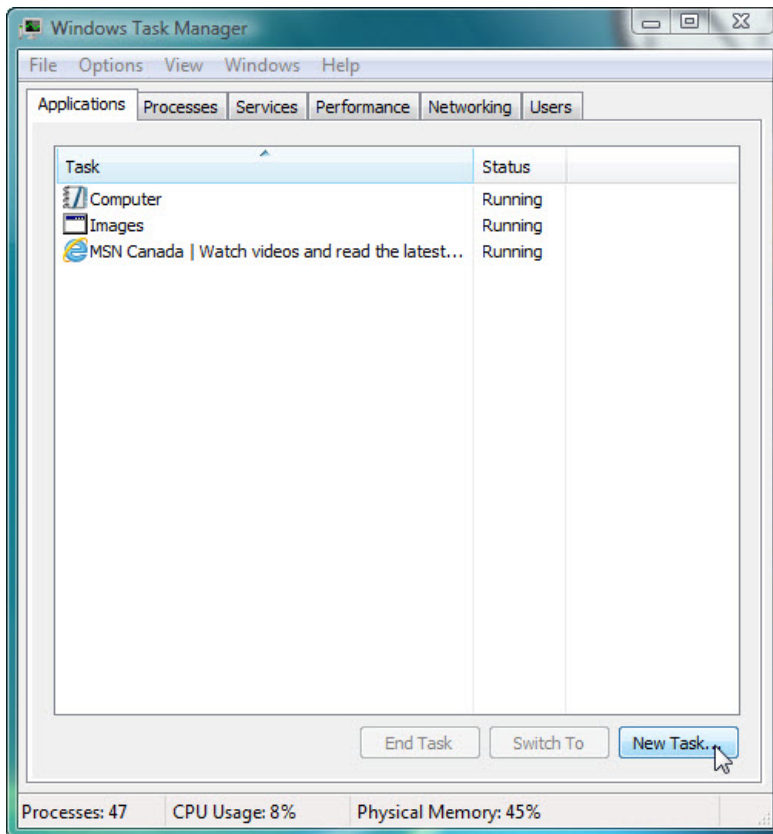
Click on the desktop and press **Ctrl-Alt-Delete** > click **Start Task Manager** > **Applications** tab.



Select the open browser and then click **Switch To**.

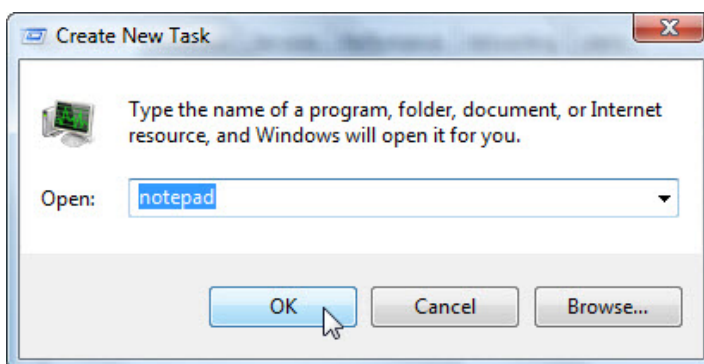
What happened to the browser?

Bring Task Manager to the front of the desktop.



Click **New Task**.

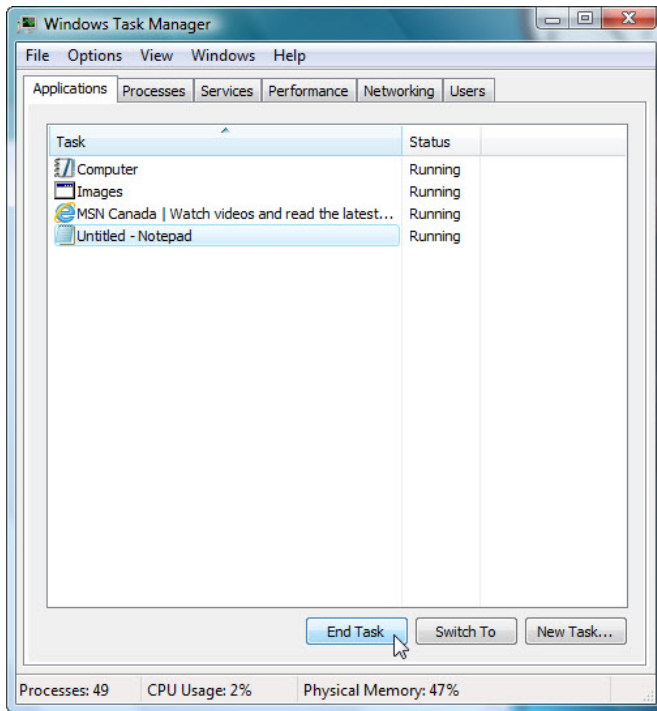
The "Create New Task" window opens.



In the Open field type **Notepad** and then click **OK**.

What happens?

Navigate back to Windows Task Manager.

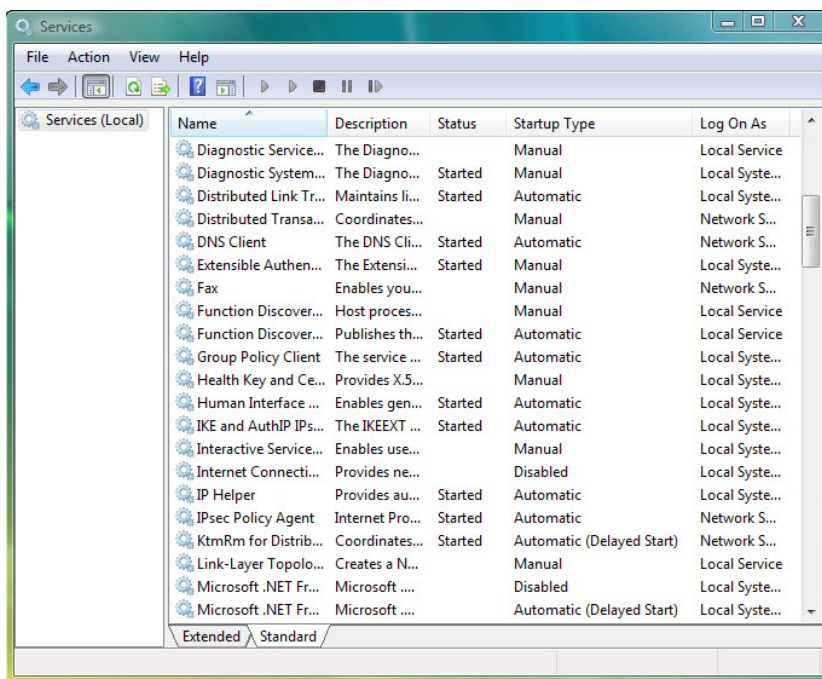


Select **Notepad** and then click **End Task**.

What happens?

Step 2

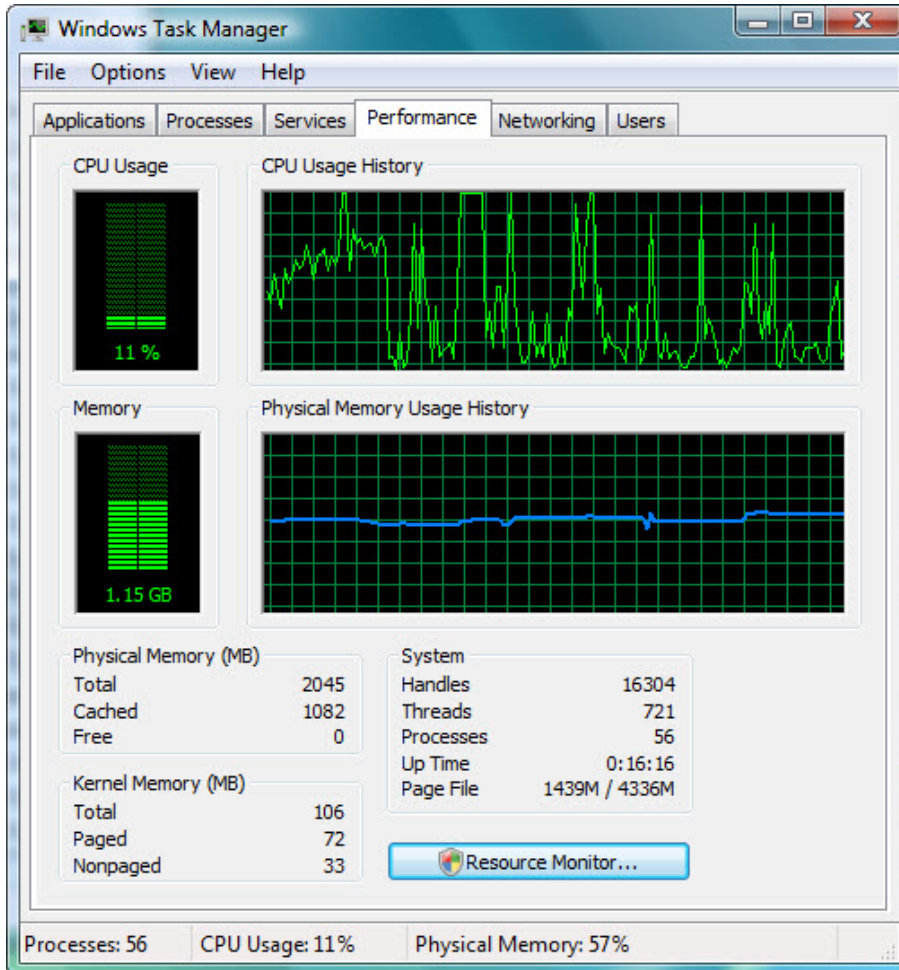
Click the **Services** tab.



What Startup Types are listed?

Step 3

Click the **Performance** tab.



How many Threads are running?

How many Processes are running?

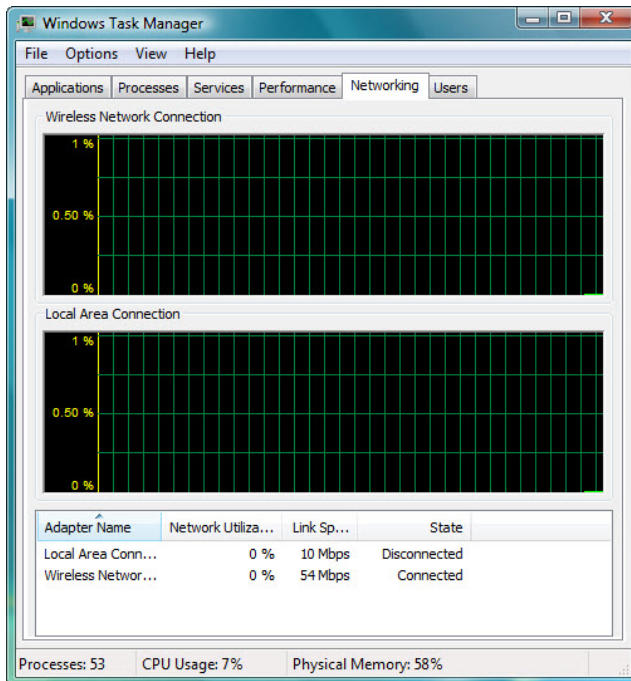
What is the Total Physical Memory (MB)?

What is the Available Physical Memory (MB)?

How much Physical Memory (MB) is being used by the system?

Step 4

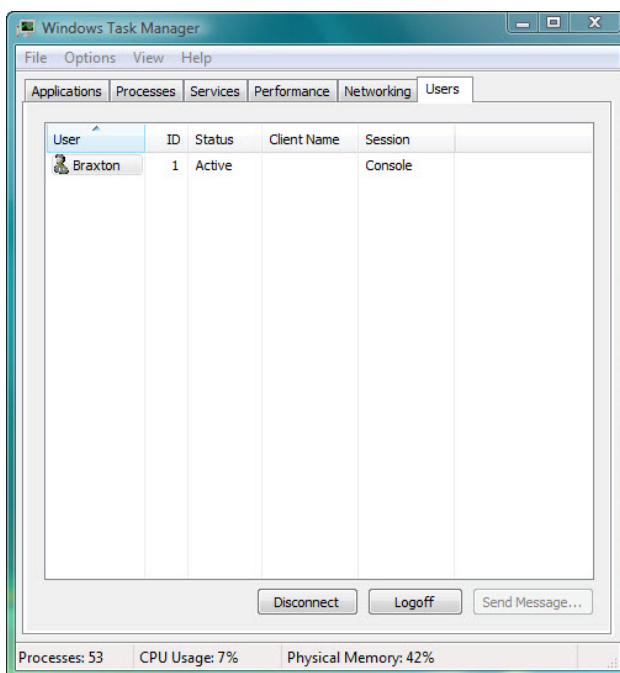
Click the **Networking** tab.



What is the Link Speed?

Step 5

Click the **Users** tab.

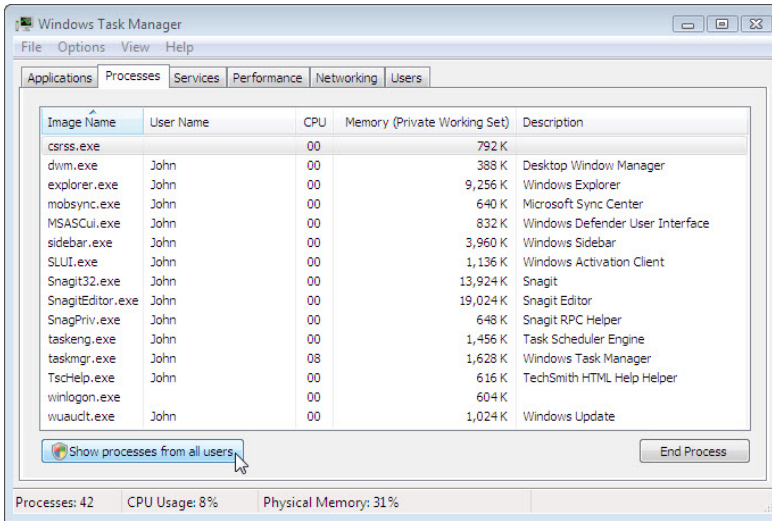


List all users and their Status.

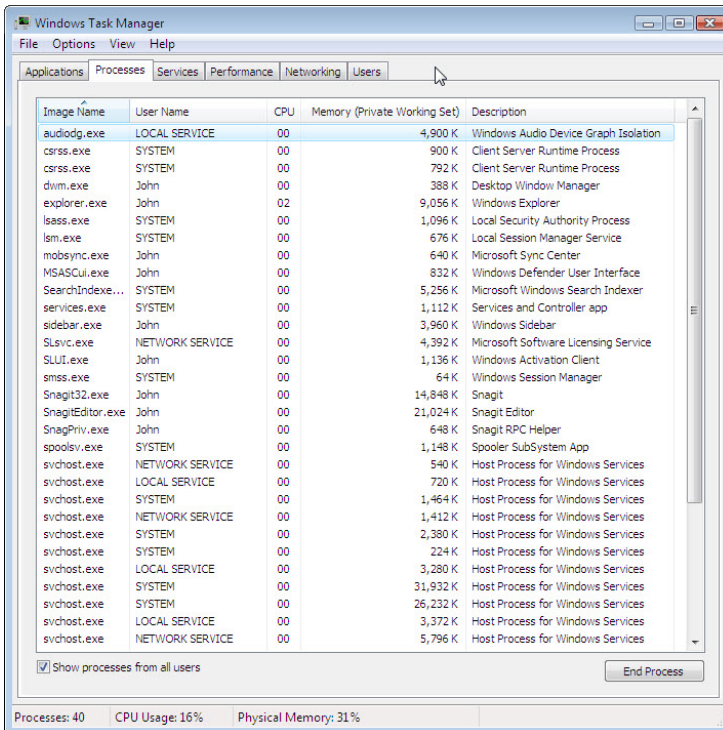
What actions can you perform on the user from this window?

Step 6

Click the **Processes** tab.



Click **Show processes from all users**.



Double-click the border around the tabs.

Windows Task Manager is now in compact mode.

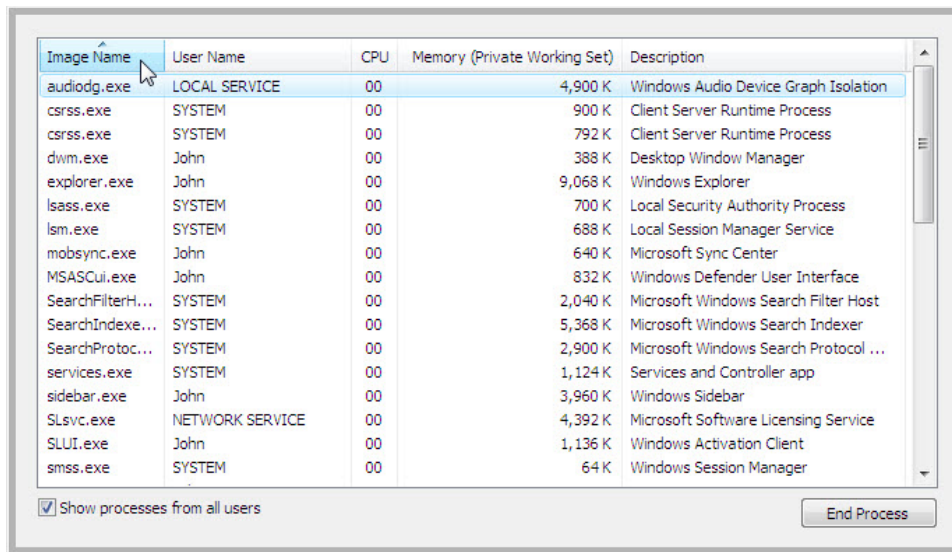


Image Name	User Name	CPU	Memory (Private Working Set)	Description
audiodg.exe	LOCAL SERVICE	00	4,900 K	Windows Audio Device Graph Isolation
csrss.exe	SYSTEM	00	900 K	Client Server Runtime Process
csrss.exe	SYSTEM	00	792 K	Client Server Runtime Process
dwm.exe	John	00	388 K	Desktop Window Manager
explorer.exe	John	00	9,068 K	Windows Explorer
lsass.exe	SYSTEM	00	700 K	Local Security Authority Process
lsm.exe	SYSTEM	00	688 K	Local Session Manager Service
mobsync.exe	John	00	640 K	Microsoft Sync Center
MSASCui.exe	John	00	832 K	Windows Defender User Interface
SearchFilterH...	SYSTEM	00	2,040 K	Microsoft Windows Search Filter Host
SearchIndexe...	SYSTEM	00	5,368 K	Microsoft Windows Search Indexer
SearchProtoc...	SYSTEM	00	2,900 K	Microsoft Windows Search Protocol ...
services.exe	SYSTEM	00	1,124 K	Services and Controller app
sidebar.exe	John	00	3,960 K	Windows Sidebar
SLsvc.exe	NETWORK SERVICE	00	4,392 K	Microsoft Software Licensing Service
SLUI.exe	John	00	1,136 K	Windows Activation Client
smss.exe	SYSTEM	00	64 K	Windows Session Manager

Show processes from all users End Process

Click **Image Name**.

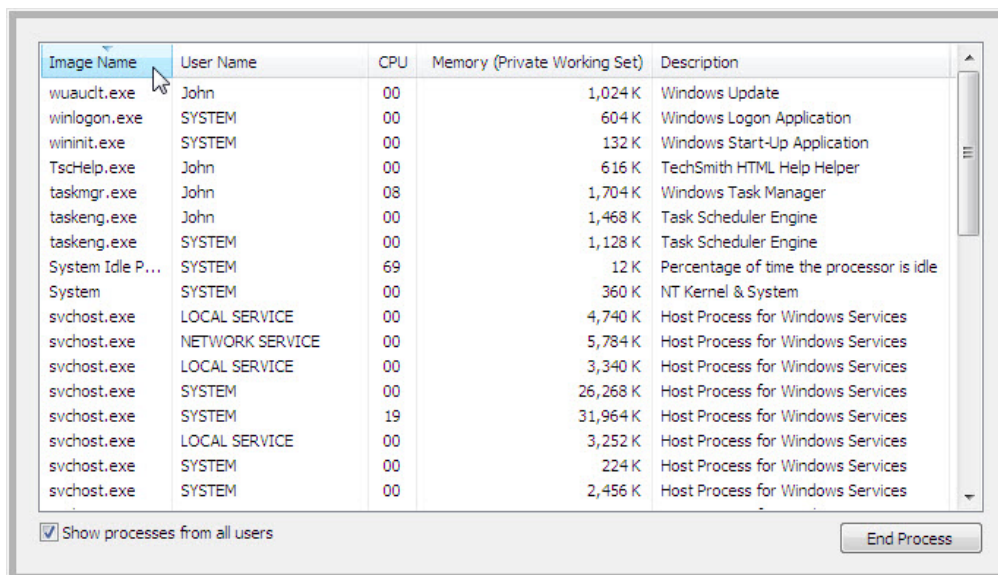
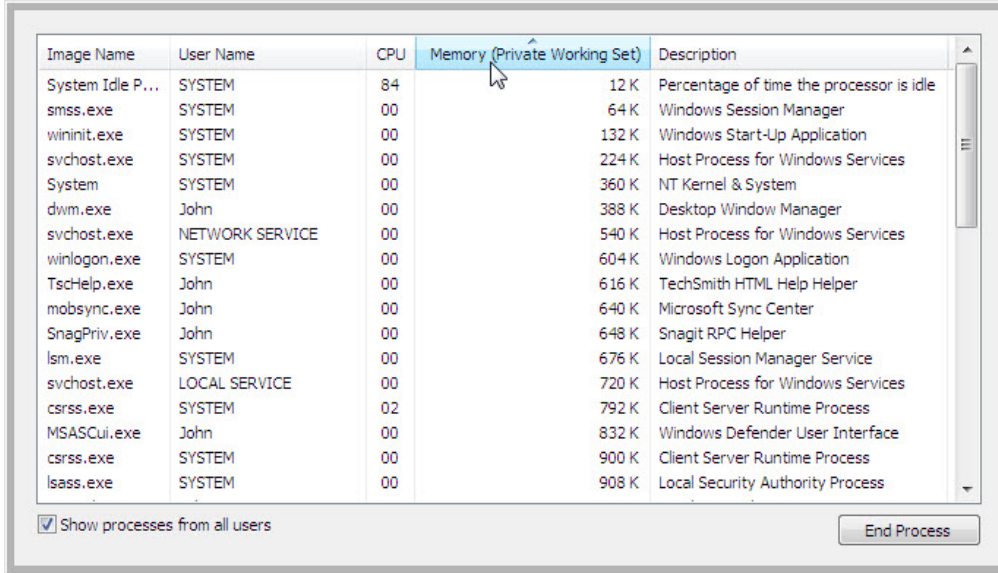


Image Name	User Name	CPU	Memory (Private Working Set)	Description
wuauclt.exe	John	00	1,024 K	Windows Update
winlogon.exe	SYSTEM	00	604 K	Windows Logon Application
wininit.exe	SYSTEM	00	132 K	Windows Start-Up Application
TscHelp.exe	John	00	616 K	TechSmith HTML Help Helper
taskmgr.exe	John	08	1,704 K	Windows Task Manager
taskeng.exe	John	00	1,468 K	Task Scheduler Engine
taskeng.exe	SYSTEM	00	1,128 K	Task Scheduler Engine
System Idle P...	SYSTEM	69	12 K	Percentage of time the processor is idle
System	SYSTEM	00	360 K	NT Kernel & System
svchost.exe	LOCAL SERVICE	00	4,740 K	Host Process for Windows Services
svchost.exe	NETWORK SERVICE	00	5,784 K	Host Process for Windows Services
svchost.exe	LOCAL SERVICE	00	3,340 K	Host Process for Windows Services
svchost.exe	SYSTEM	00	26,268 K	Host Process for Windows Services
svchost.exe	SYSTEM	19	31,964 K	Host Process for Windows Services
svchost.exe	LOCAL SERVICE	00	3,252 K	Host Process for Windows Services
svchost.exe	SYSTEM	00	224 K	Host Process for Windows Services
svchost.exe	SYSTEM	00	2,456 K	Host Process for Windows Services

Show processes from all users End Process

Click **Image Name** again.

What effect does this have on the columns?



Click **Memory (Private Working Set)**.

What affect does this have on the columns?

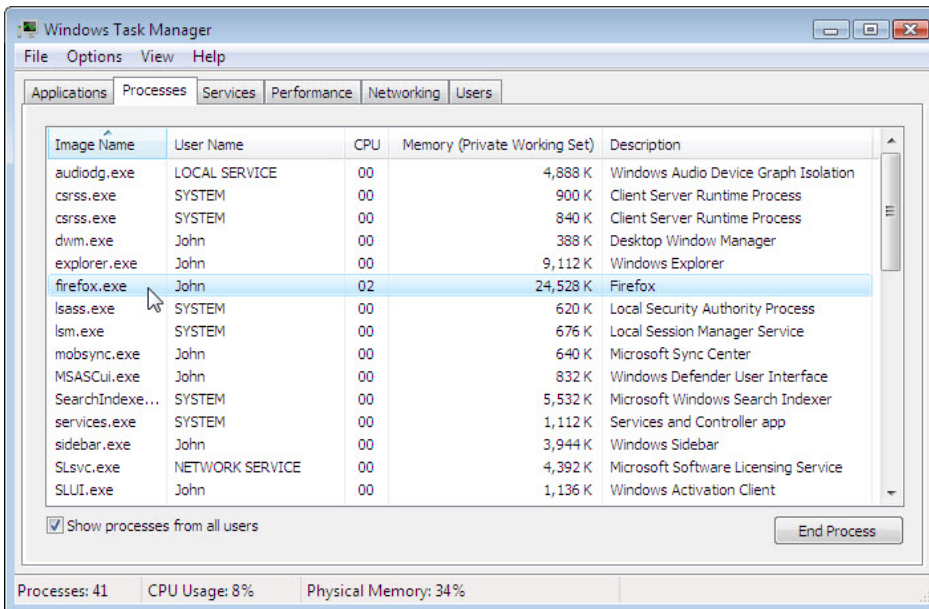
Double-click the outside border again to return to tabs mode.

Step 7

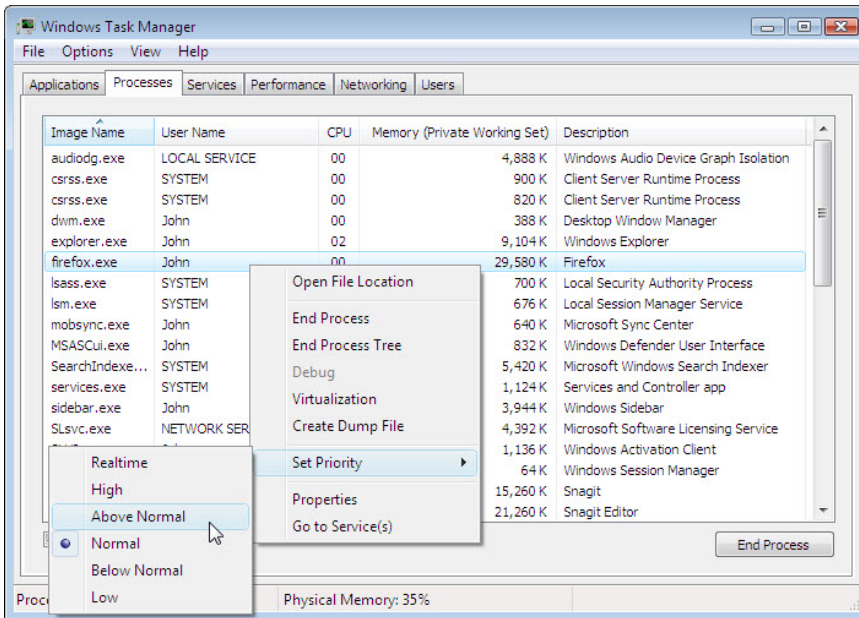
Open a browser.

Note: Firefox is used in this lab. However, any browser will work. Just substitute your browser name whenever you see the word **Firefox**.

Return to the “Windows Task Manager”.



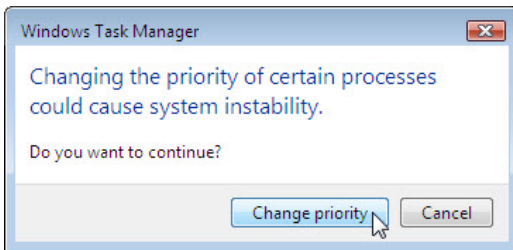
Click **Image Name** so the list is in alphabetical order, then locate and select **firefox.exe**.



Right-click **firefox.exe** > **Set Priority**.

What is the default priority for the browser?

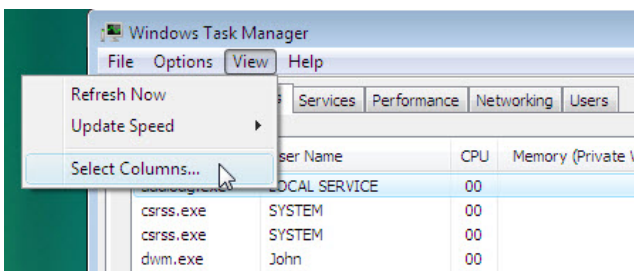
Set the priority to **Above Normal**.



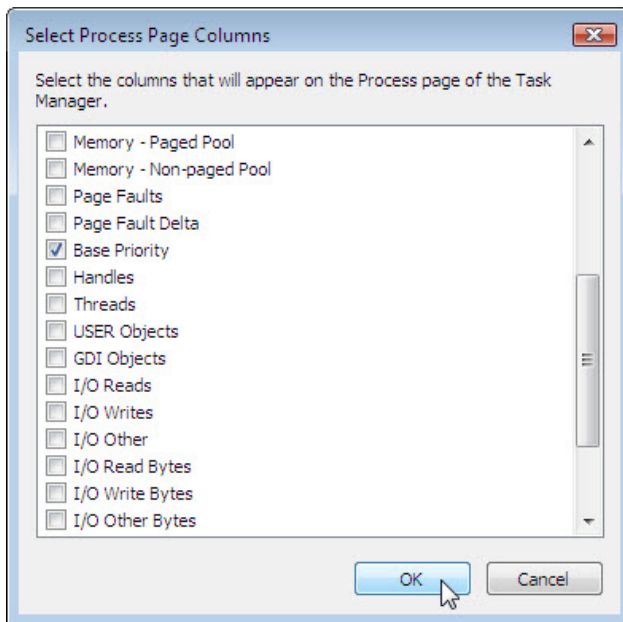
Click **Change priority** when the “Windows Task Manager” warning message opens.

Step 8

Expand the width of the “Windows Task Manager” window.



Click **View** > **Select Columns**.



Place a check mark next to **Base Priority** > click **OK**.

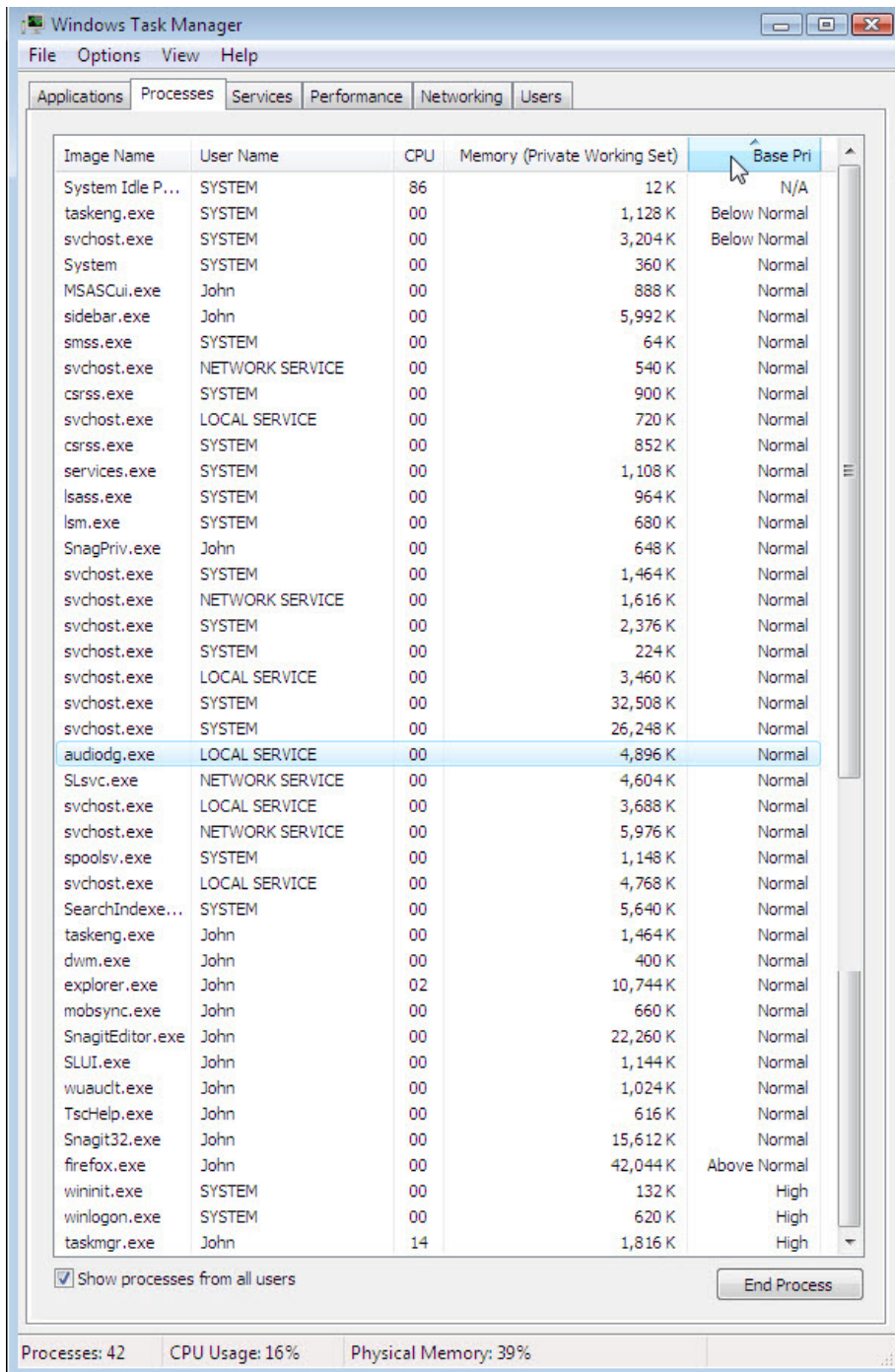


Image Name	User Name	CPU	Memory (Private Working Set)	Base Pri
System Idle P...	SYSTEM	86	12 K	N/A
taskeng.exe	SYSTEM	00	1,128 K	Below Normal
svchost.exe	SYSTEM	00	3,204 K	Below Normal
System	SYSTEM	00	360 K	Normal
MSASCui.exe	John	00	888 K	Normal
sidebar.exe	John	00	5,992 K	Normal
smss.exe	SYSTEM	00	64 K	Normal
svchost.exe	NETWORK SERVICE	00	540 K	Normal
csrss.exe	SYSTEM	00	900 K	Normal
svchost.exe	LOCAL SERVICE	00	720 K	Normal
csrss.exe	SYSTEM	00	852 K	Normal
services.exe	SYSTEM	00	1,108 K	Normal
lsass.exe	SYSTEM	00	964 K	Normal
lsm.exe	SYSTEM	00	680 K	Normal
SnagPriv.exe	John	00	648 K	Normal
svchost.exe	SYSTEM	00	1,464 K	Normal
svchost.exe	NETWORK SERVICE	00	1,616 K	Normal
svchost.exe	SYSTEM	00	2,376 K	Normal
svchost.exe	SYSTEM	00	224 K	Normal
svchost.exe	LOCAL SERVICE	00	3,460 K	Normal
svchost.exe	SYSTEM	00	32,508 K	Normal
svchost.exe	SYSTEM	00	26,248 K	Normal
audiodg.exe	LOCAL SERVICE	00	4,896 K	Normal
SLsvc.exe	NETWORK SERVICE	00	4,604 K	Normal
svchost.exe	LOCAL SERVICE	00	3,688 K	Normal
svchost.exe	NETWORK SERVICE	00	5,976 K	Normal
spoolsv.exe	SYSTEM	00	1,148 K	Normal
svchost.exe	LOCAL SERVICE	00	4,768 K	Normal
SearchIndexe...	SYSTEM	00	5,640 K	Normal
taskeng.exe	John	00	1,464 K	Normal
dwm.exe	John	00	400 K	Normal
explorer.exe	John	02	10,744 K	Normal
mobsync.exe	John	00	660 K	Normal
SnagitEditor.exe	John	00	22,260 K	Normal
SLUI.exe	John	00	1,144 K	Normal
wuauclt.exe	John	00	1,024 K	Normal
TscHelp.exe	John	00	616 K	Normal
Snagit32.exe	John	00	15,612 K	Normal
firefox.exe	John	00	42,044 K	Above Normal
wininit.exe	SYSTEM	00	132 K	High
winlogon.exe	SYSTEM	00	620 K	High
taskmgr.exe	John	14	1,816 K	High

Show processes from all users End Process

Processes: 42 CPU Usage: 16% Physical Memory: 39%

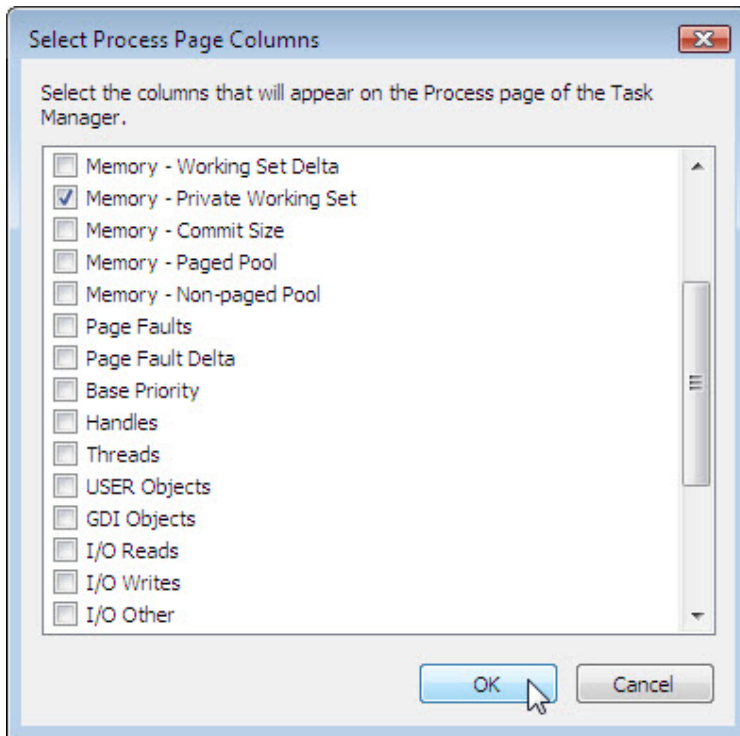
Click **Base Pri**.

Which image name has a base priority of N/A?

List one image name that has a base priority of Above Normal?

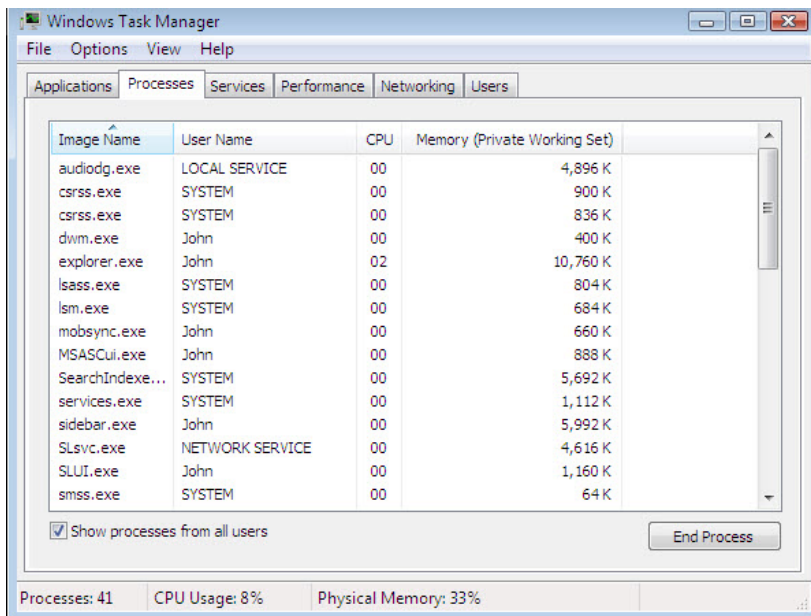
Step 9

Reset Firefox.exe base priority to **Normal** > **Change priority**.



Click **View** > **Select Columns** > uncheck **Base Priority** > **OK**.

Close Firefox.



Is Firefox listed as a process?