

IT Essentials 5.0

5.3.2.17 Lab - Managing Virtual Memory in Windows Vista

Introduction

Print and complete this lab.

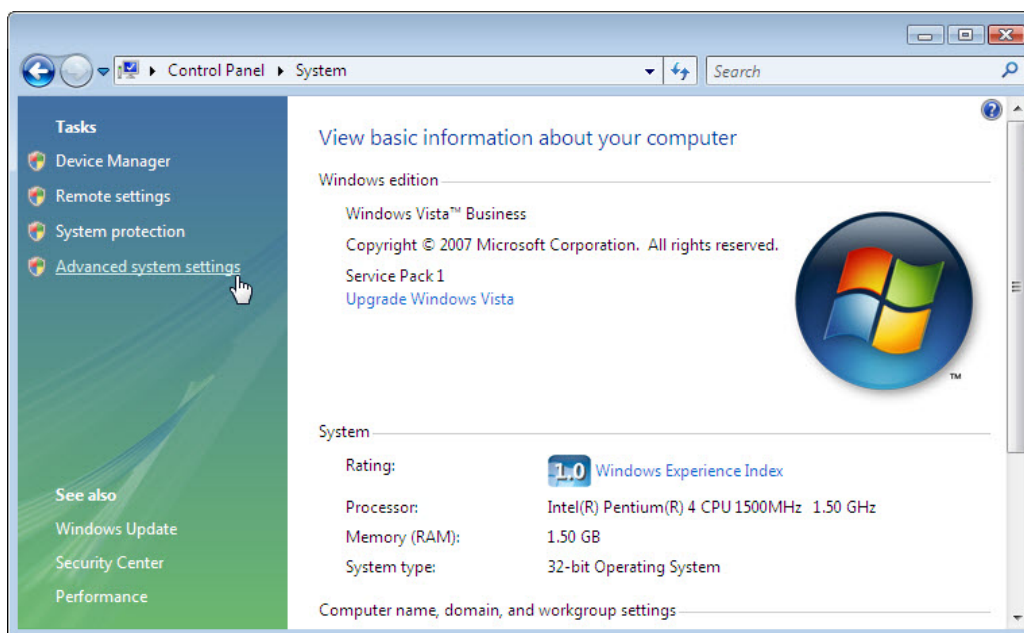
In this lab, you will customize Virtual Memory settings.

Recommended Equipment

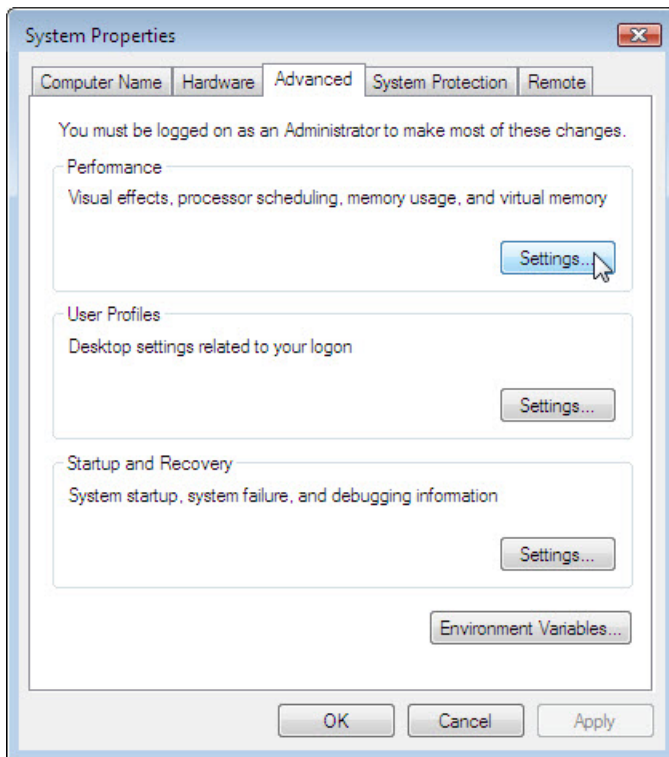
- A computer with Windows Vista installed
- The hard drive must have two or more partitions

Step 1

Click **Start** > right-click **Computer** > **Properties** > **Advanced system settings**.



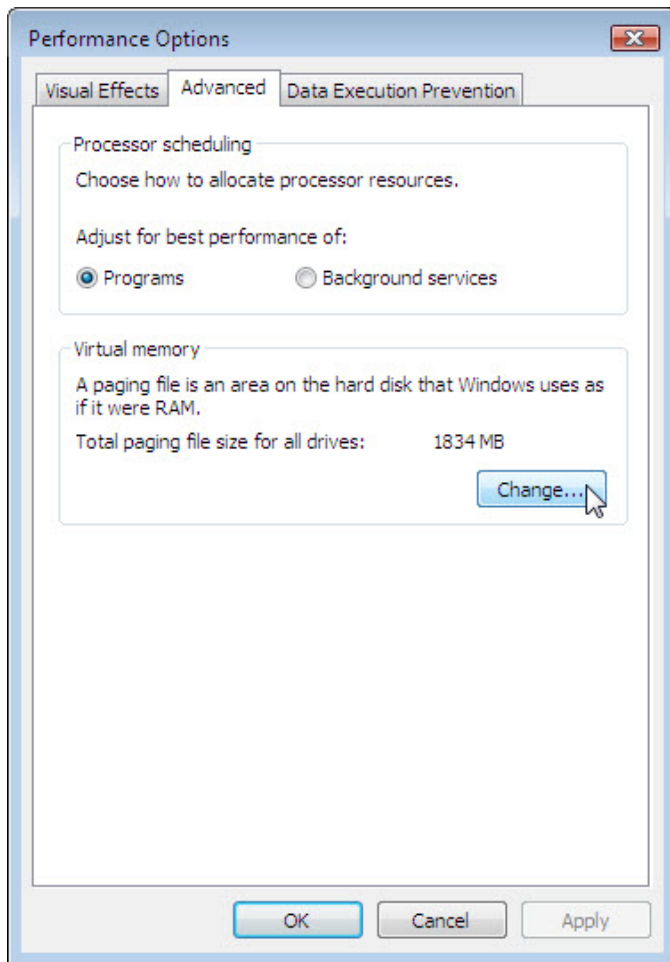
The “System Properties” window opens.



Click the **Advanced** tab, and then click **Settings** in the “Performance” area.

Step 2

The “Performance Options” window opens.

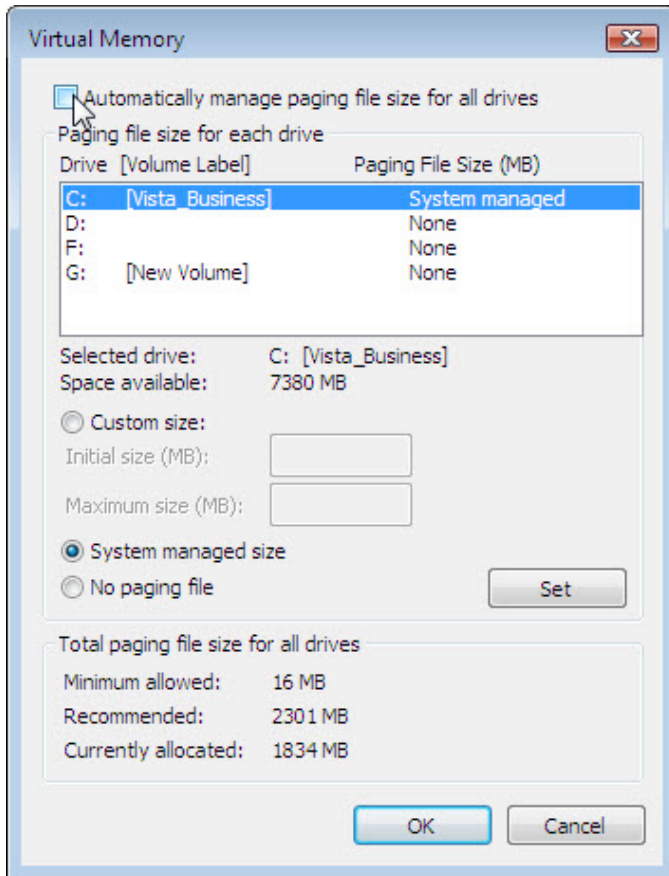


Click the **Advanced** tab.

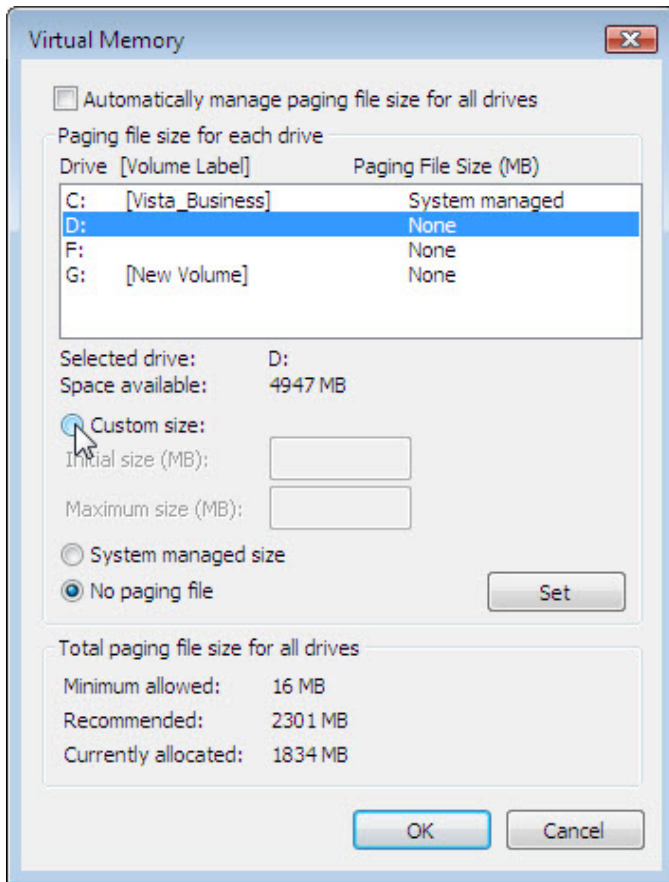
What is the current size of the Virtual Memory (paging file)?

Click **Change** in the “Virtual Memory” area.

The “Virtual Memory” window opens.



Remove the check mark from **Automatically manage paging file size for all drives**.



What Drive [Volume Label] contains the paging file, is system managed?

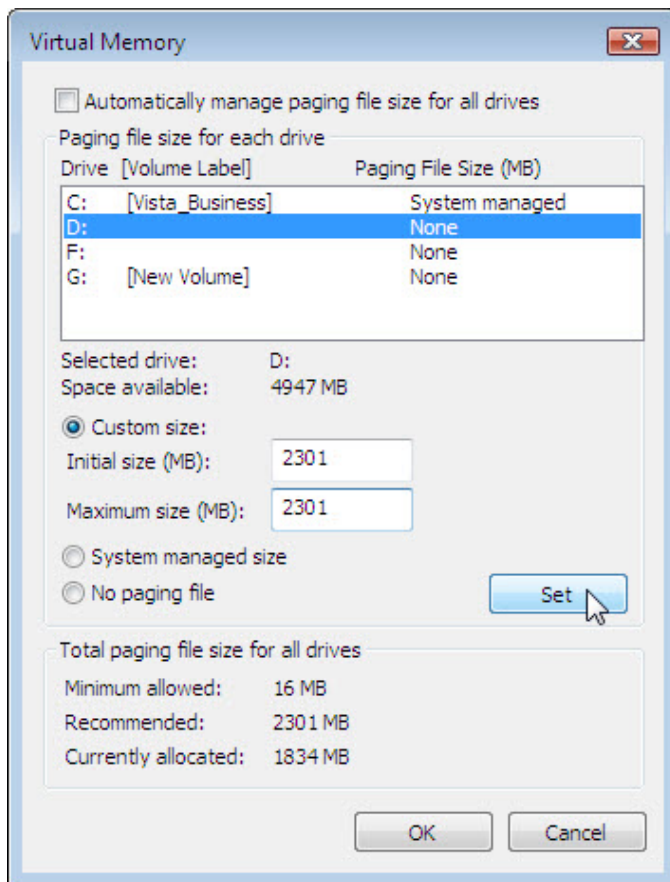
Choose the **D:** drive.

Select the **Custom size** radio button.

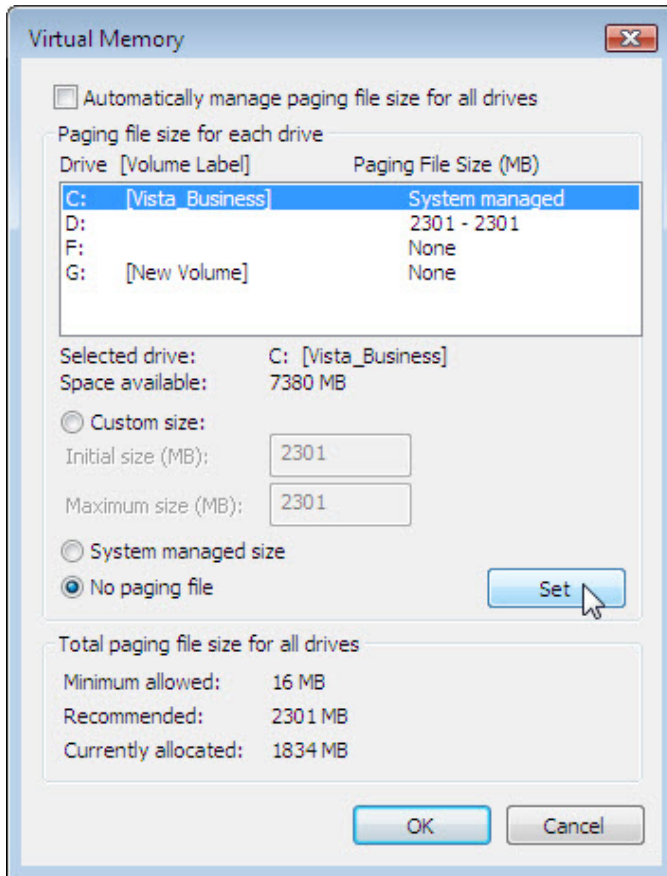
Look at the "Recommended" size in the "Total paging file size for all drives" section of the "Virtual Memory" window.

Type the recommended file size in the **Initial size (MB):** field.

Type the recommended file size again in the **Maximum size (MB):** field.



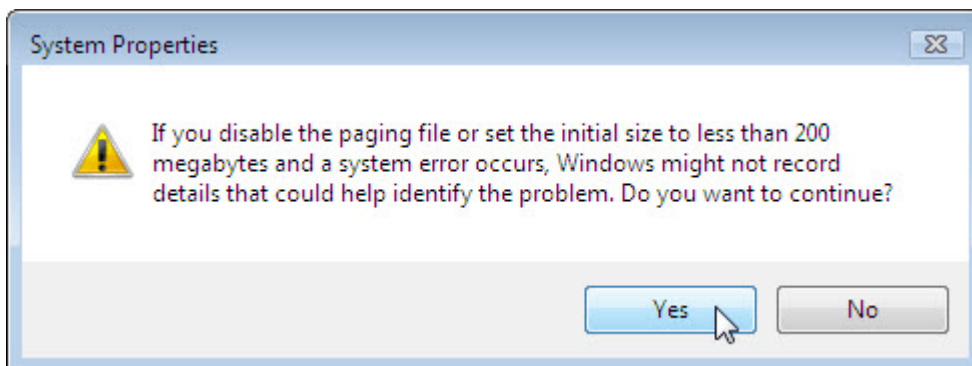
Click **Set**.



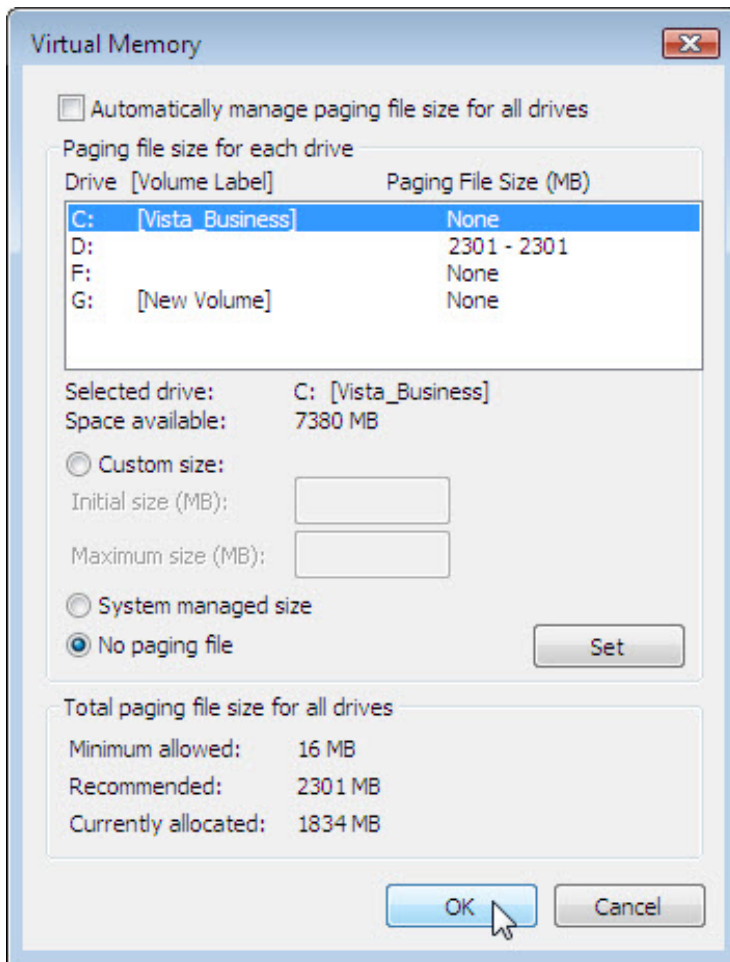
Select the **C:** drive.

Select the **No paging file** radio button, and then click **Set**.

The "System Properties" warning message appears.



Click **Yes**.



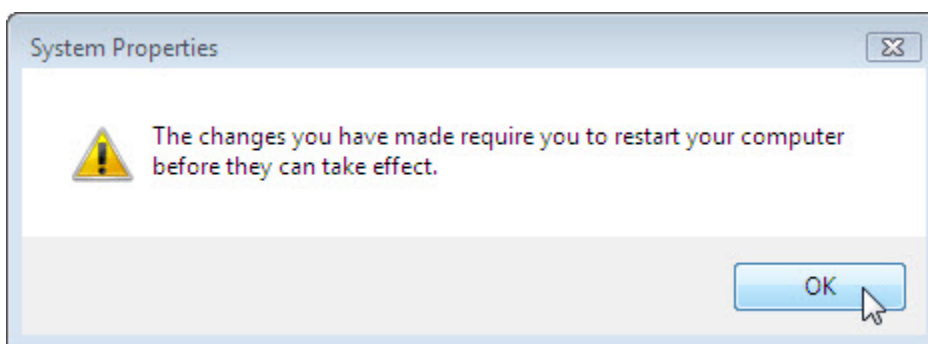
What is the paging file size (MB) for drive C:?

What is the paging file size (MB) for drive D:?

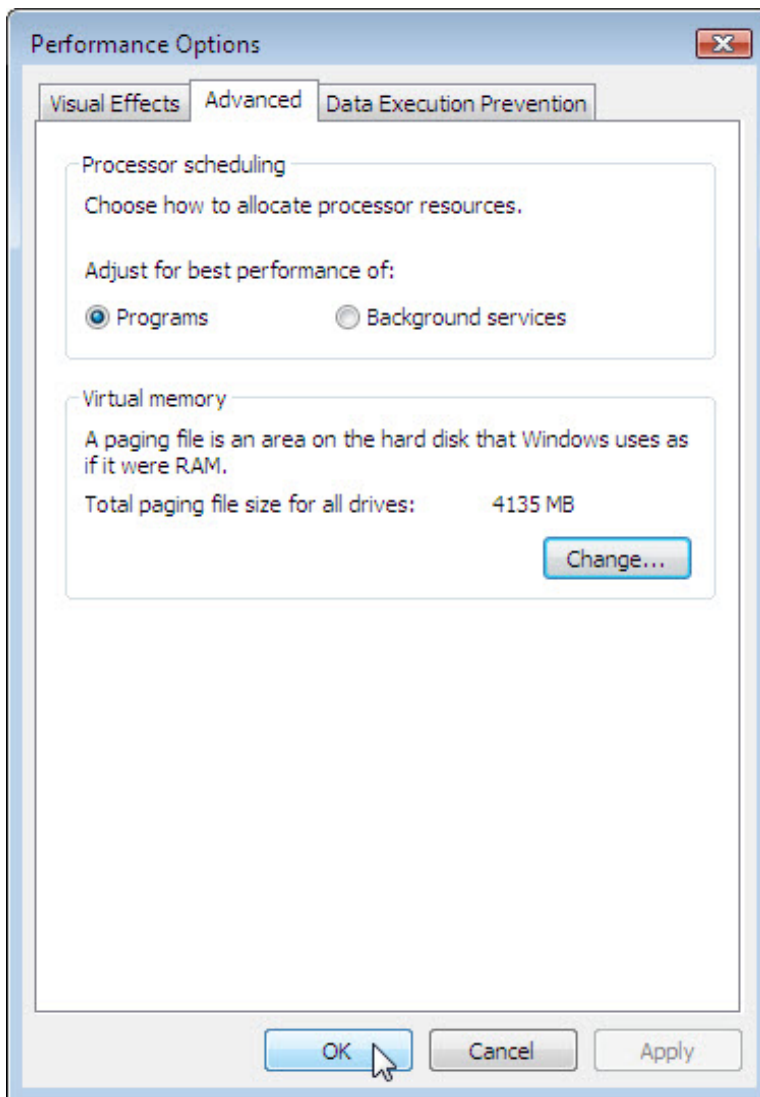
Click **OK** to accept the new virtual memory settings.

The "System Properties" restart warning message appears.

Click **OK**.

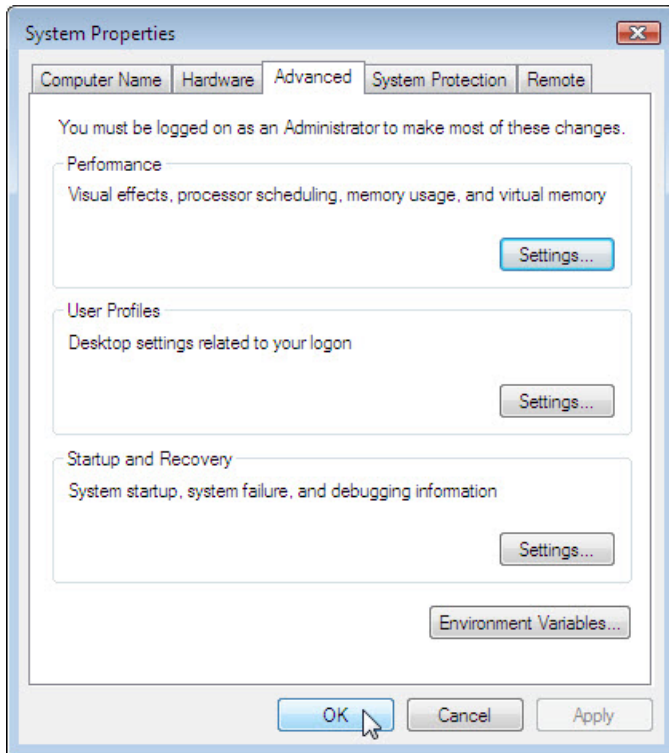


The “Performance Options” message window appears.



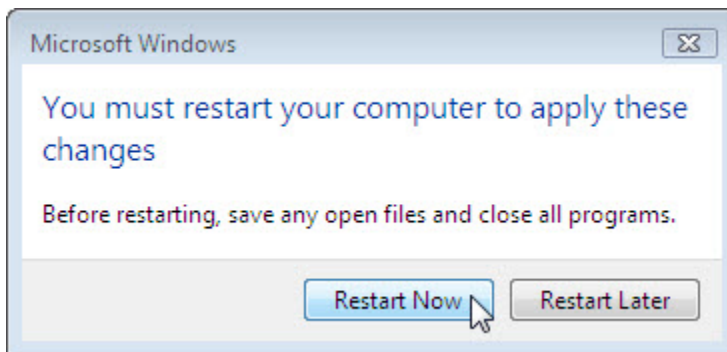
Click **OK**.

The “System Properties” message window appears.



Click **OK**.

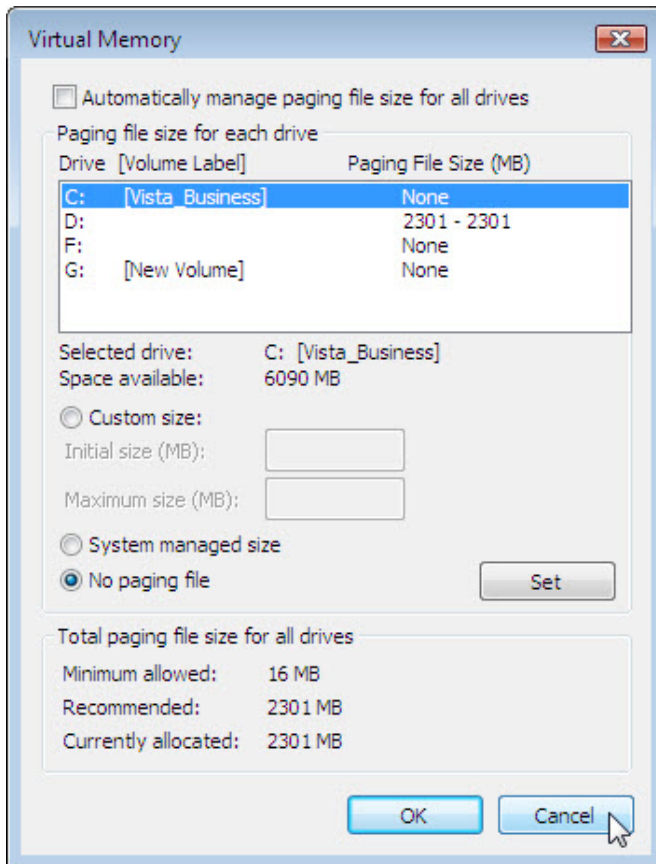
The “You must restart your computer to apply these changes” message appears, click **Restart Now**.



Step 3

Log on to Windows as an Administrator.

Open the “Virtual Memory” window.



What Drive [Volume Label] contains the paging file?

Click **Cancel** to close all open windows.

Step 4

Reset virtual memory to be managed by the system.

Select drive **C: [Local Disk]** > **System managed size** > **Set**.

Next select drive **E:** > **No paging file** > **Set**.

Place a check mark in **Automatically manage paging file size for all drives**.

Click **OK** when required.

Restart the computer and log off again.