

IT Essentials 5.0

5.3.2.21 Lab - Managing Device Drivers with Device Manager in Windows Vista

Introduction

Print and complete this lab.

In this lab, you will use Windows Device Manager to gather information about different drivers and learn how Device Manager manages drivers.

Recommended Equipment

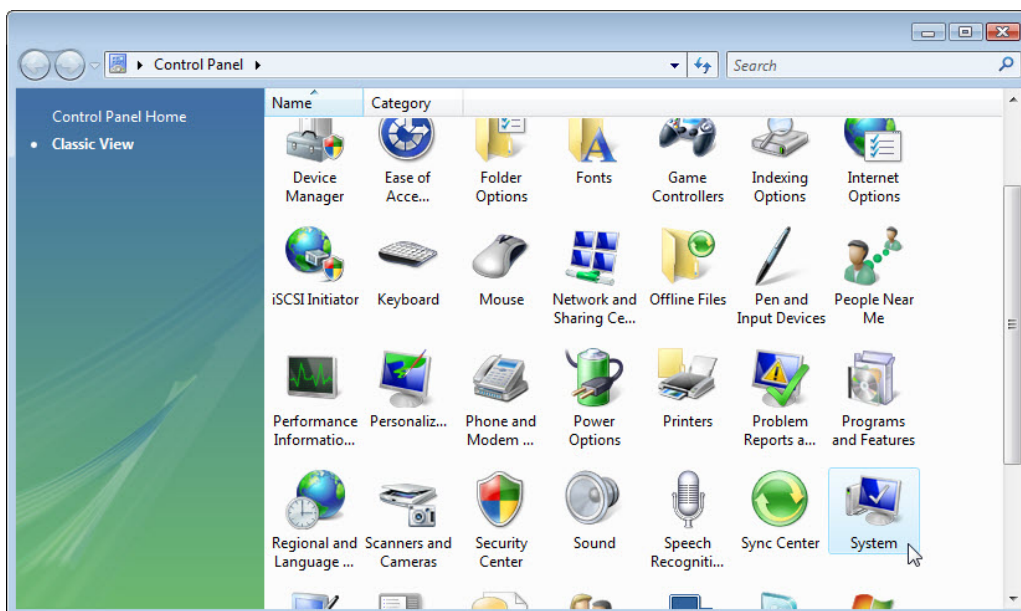
The following equipment is required for this exercise:

- A computer running Windows Vista

Step 1

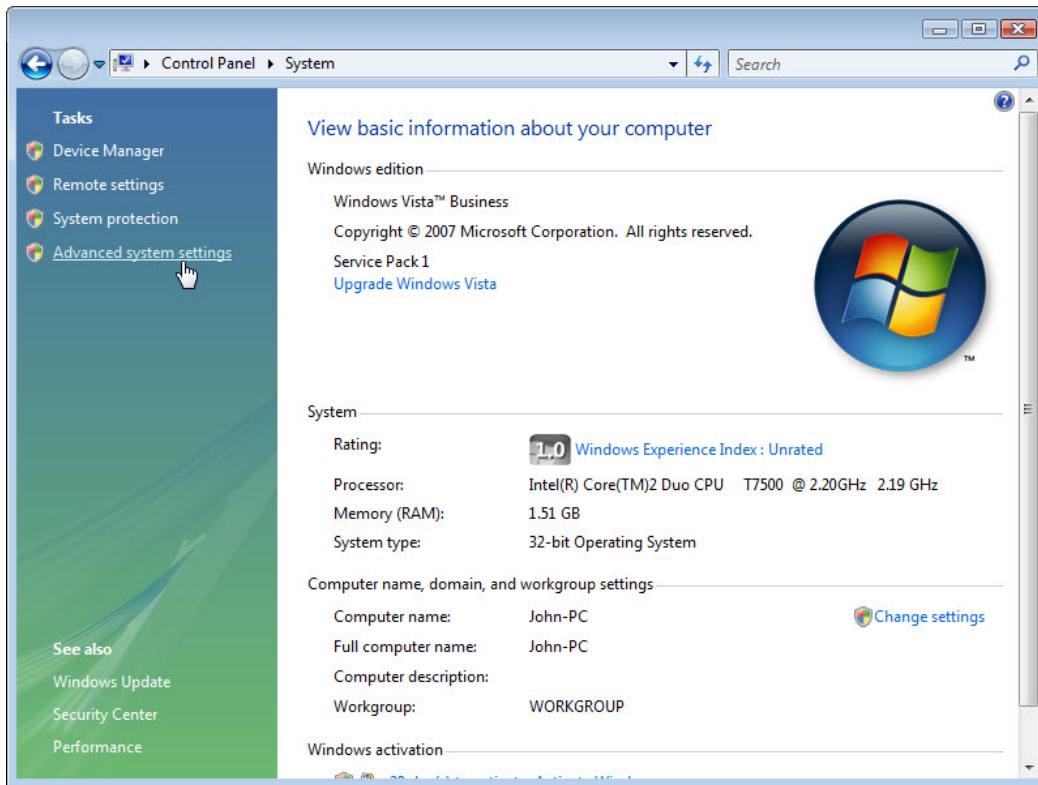
Log on to the computer as an administrator.

Click **Start > Control Panel >** double-click the **System** icon.



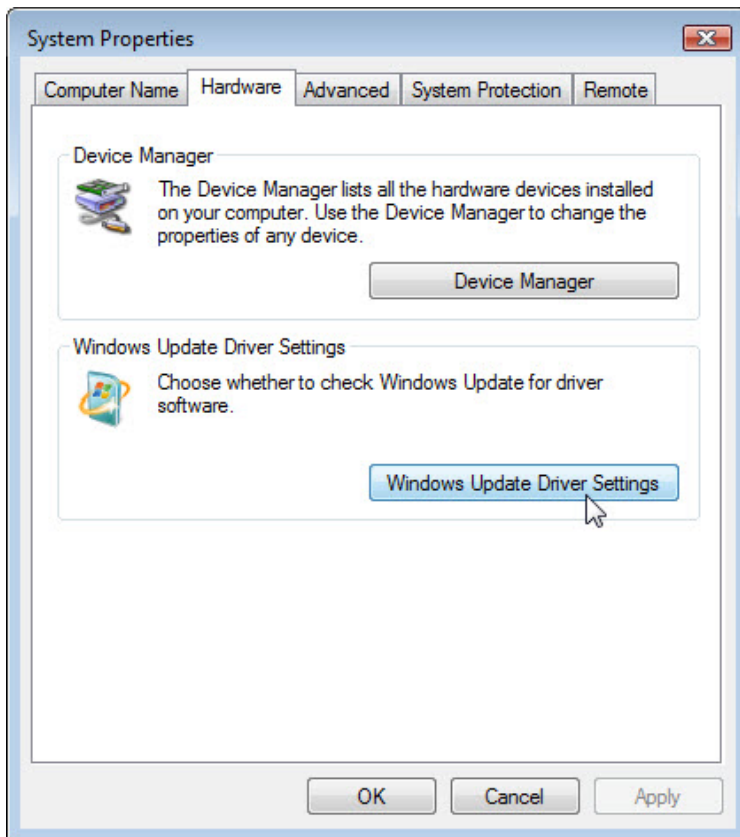
Step 2

The “System” window appears.



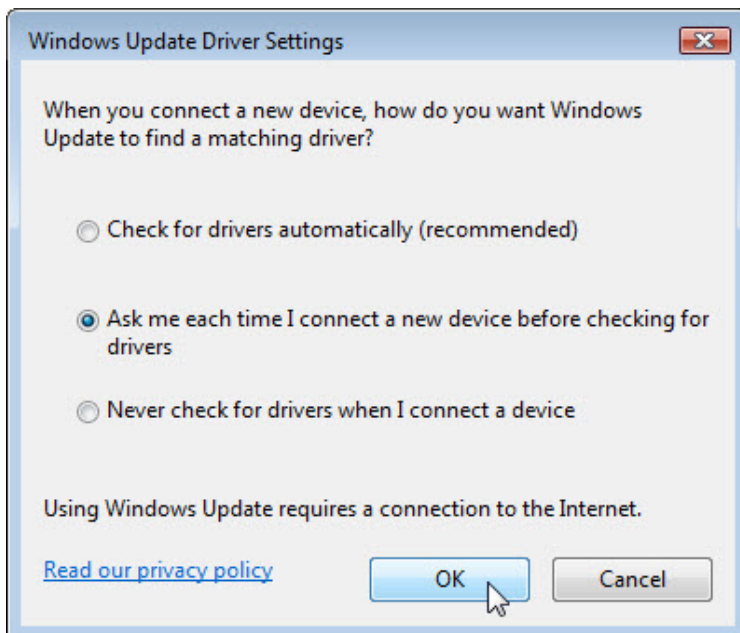
In the left pane click **Advanced system settings**. If User Account Control appears, click **Continue**.

The “System Properties” window opens.



Click the **Hardware** tab > **Windows Update Driver Settings** button.

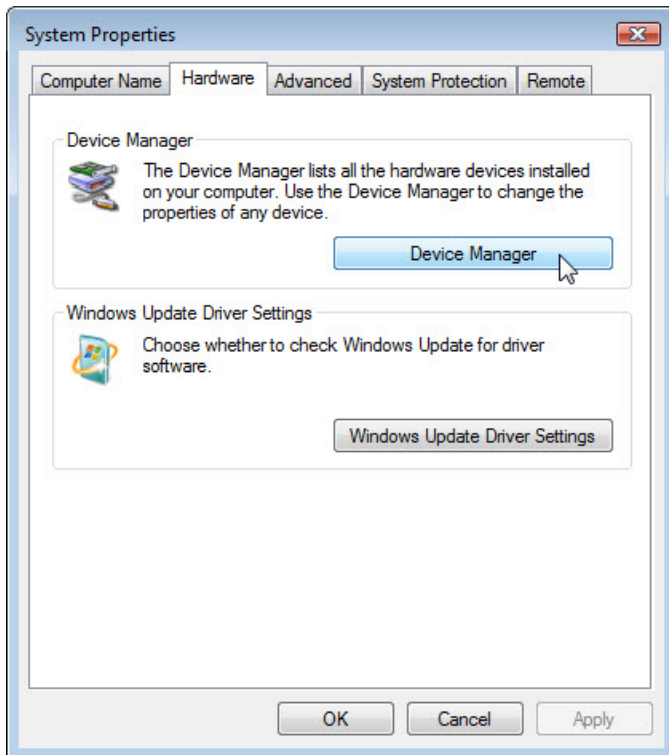
The "Windows Update Driver Settings" window opens.



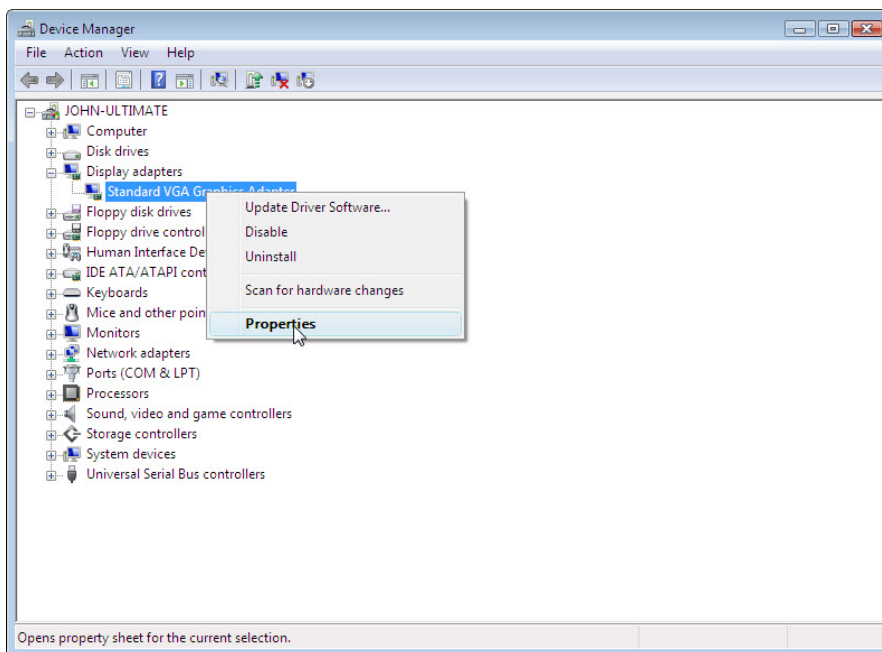
Accept the default setting and click **OK**.

Step 3

Click the **Device Manager** button.



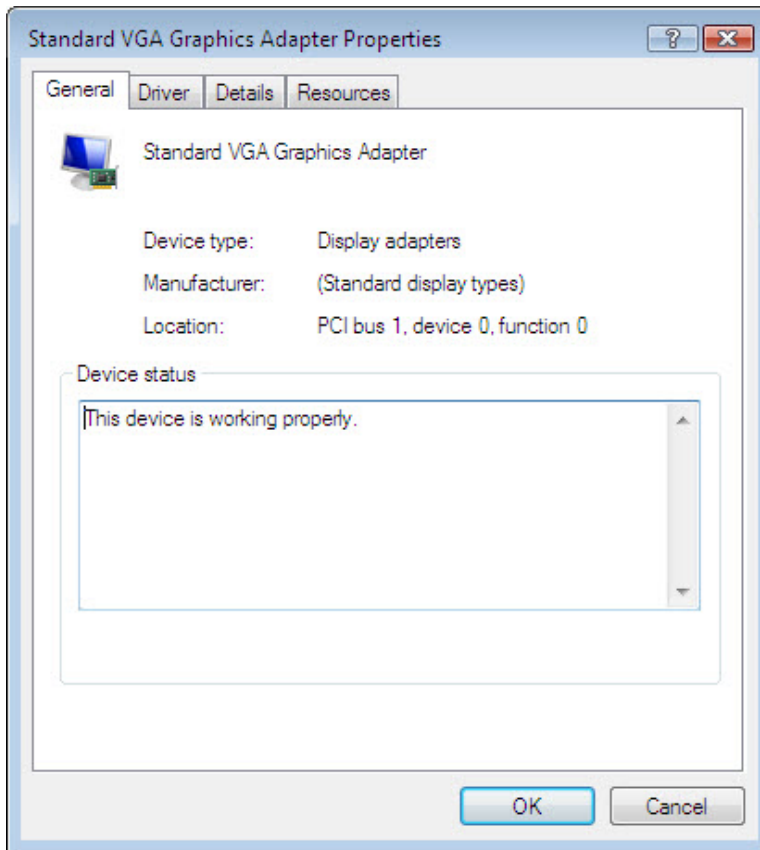
The "Device Manager" window opens.



Select the **plus sign** next to Display adapters. Right-click the adapter name and select **Properties**.

Step 4

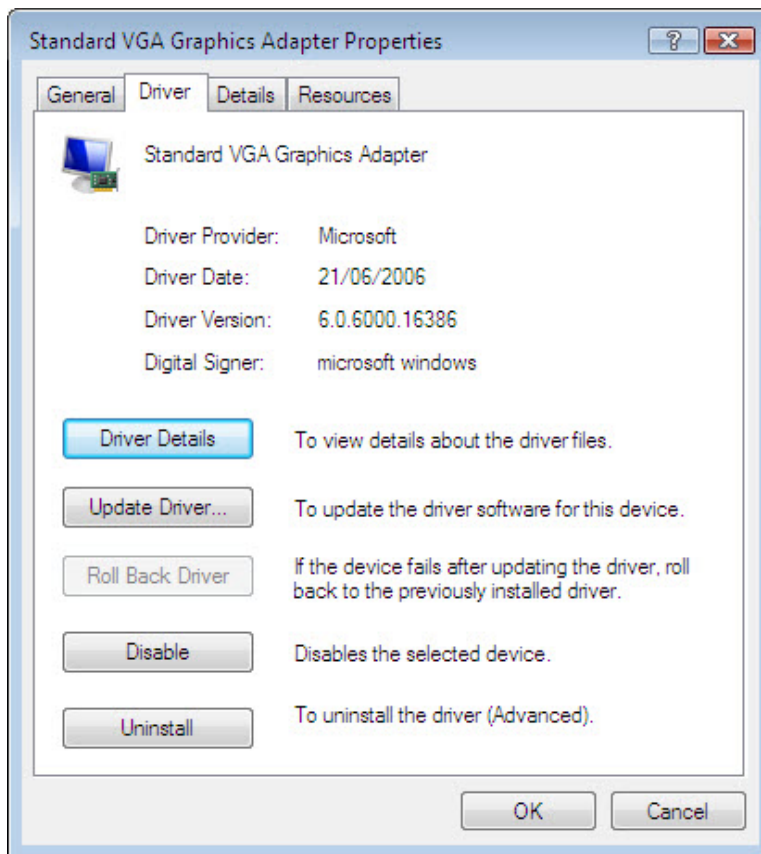
The “Display adapters Properties” window opens.



What information is displayed under the General tab?

Step 5

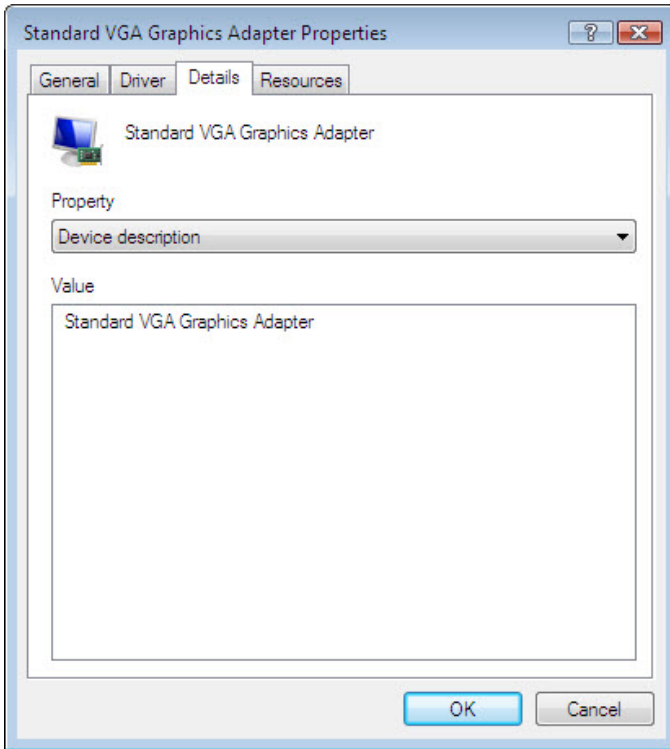
Click the **Driver** tab.



What functions can you accomplish from this page?

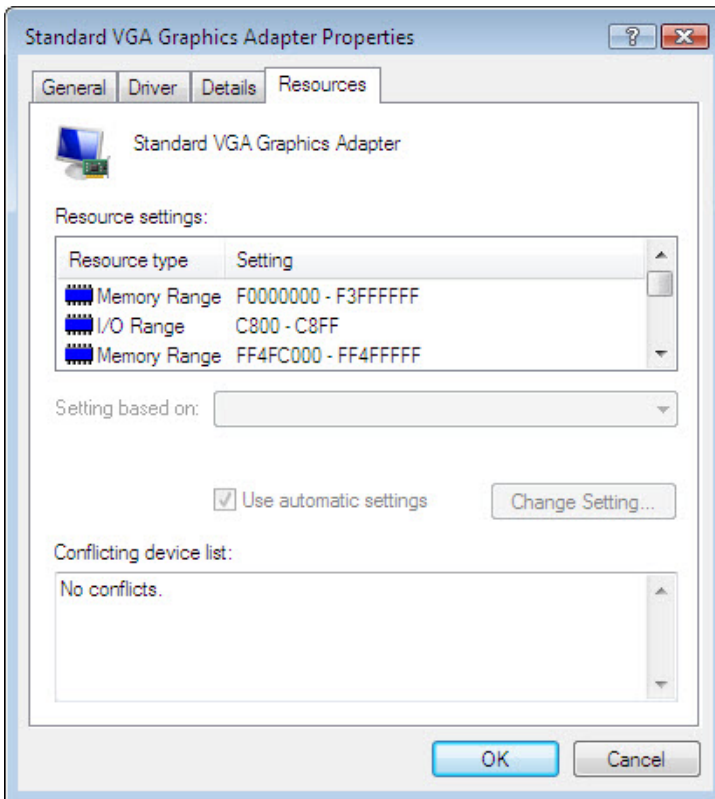
Step 6

Click the **Details** tab. This tab provides more details about the hardware.



Step 7

Click the **Resources** tab.

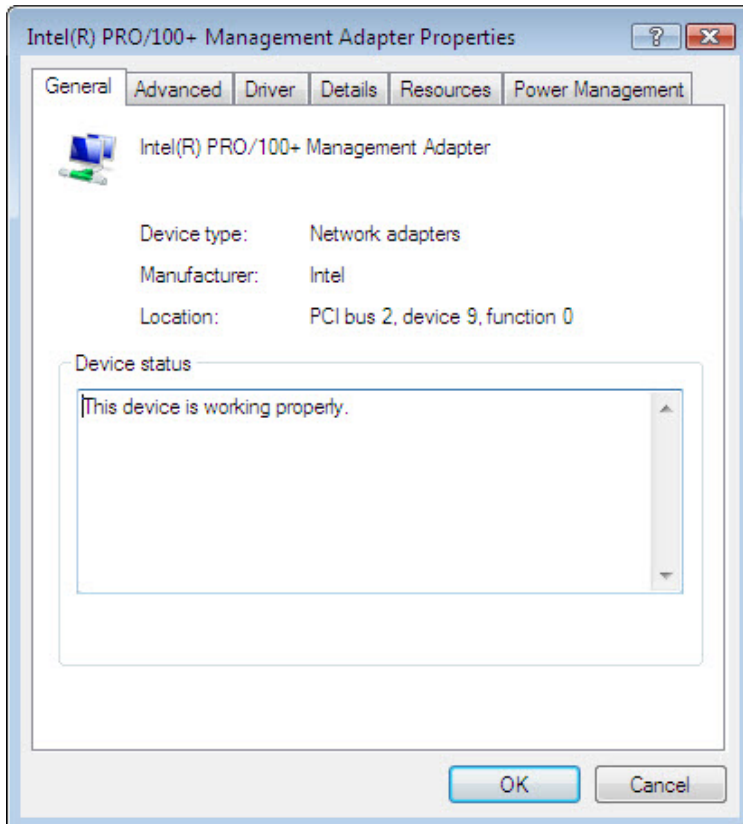


What information is displayed under the Resources tab?

Close the “Display adapters Properties” windows, click **Cancel**.

Step 8

Navigate to the “Network adapter Properties” window” by clicking the **plus sign** next to Network adapters > right-click the adapter name > select **Properties**.



Which tabs are available?

Are there any extra tabs?

What is the purpose of the extra tabs compared to the display adapter?

Close the “Network adapters Properties” windows, click **Cancel**.

Close all windows and log off.