

IT Essentials 5.0

5.3.2.24 Lab - Regional and Language Options in Windows 7

Introduction

Print and complete this lab.

In this lab, you will examine regional and language settings.

Recommended Equipment

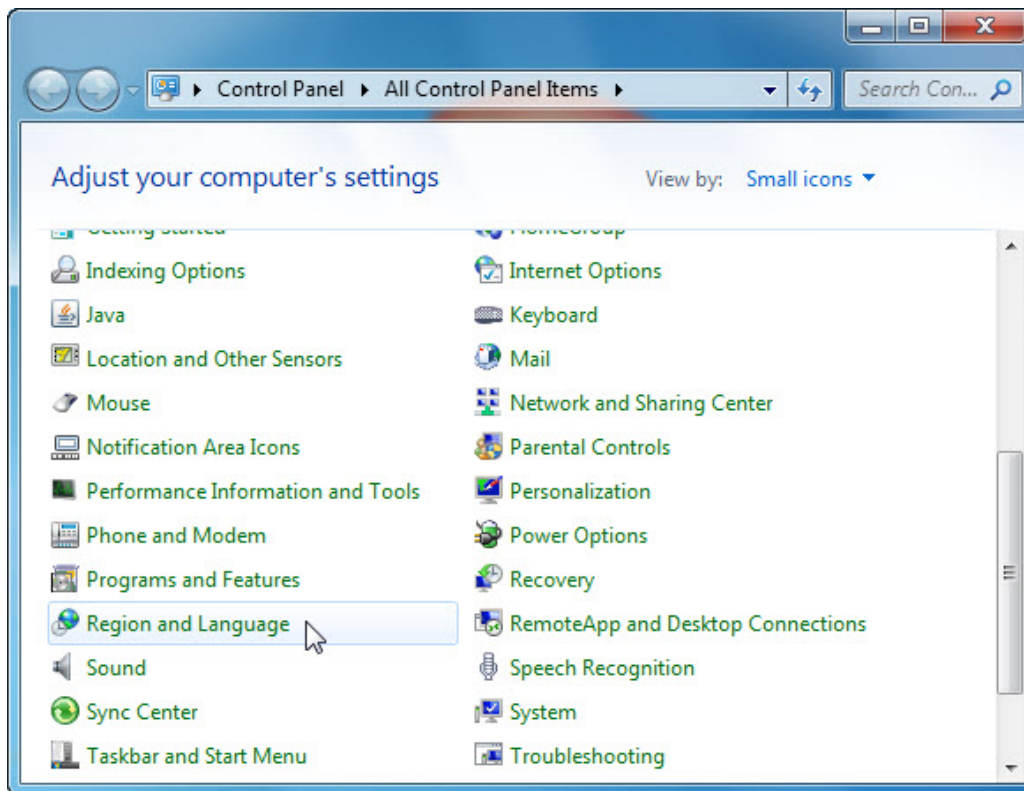
The following equipment is required for this exercise:

- A computer running Windows 7

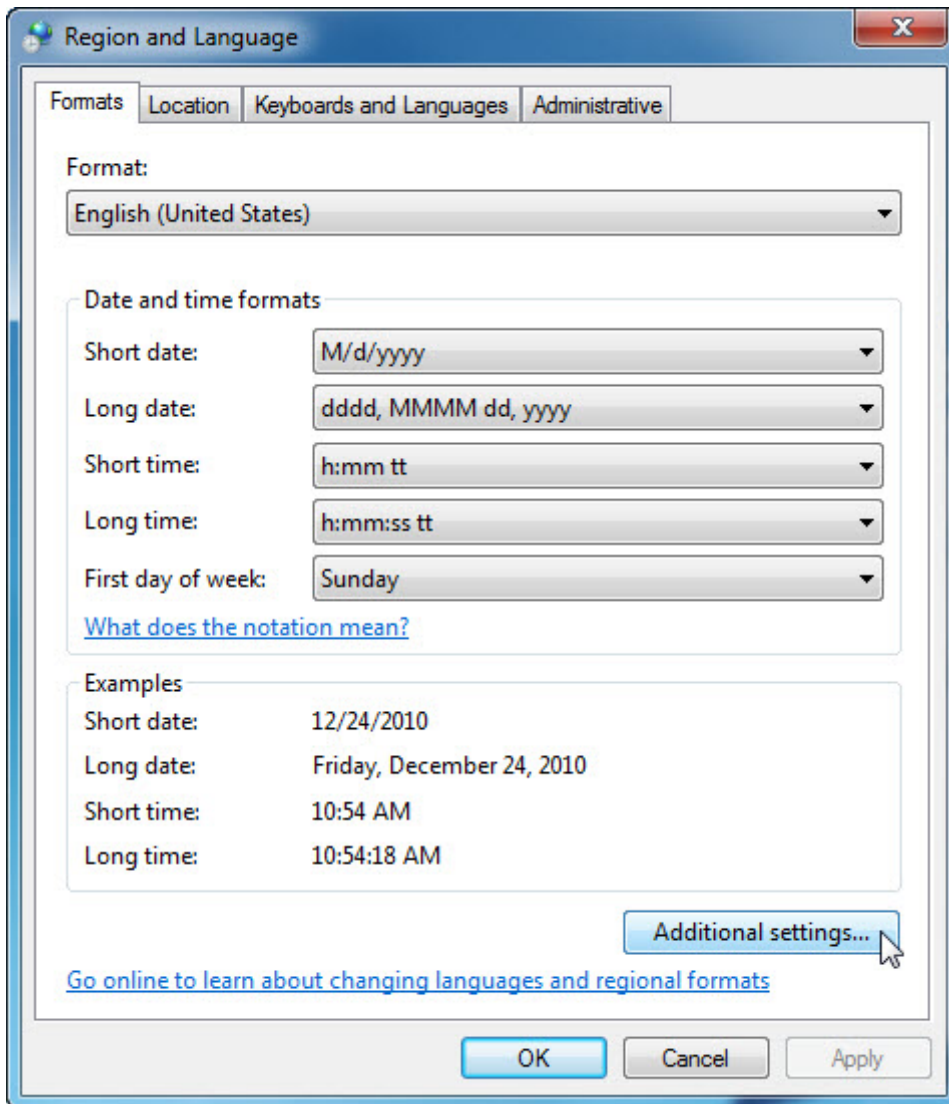
Step 1

Log on to the computer.

Click **Start > Control Panel > Region and Language**.



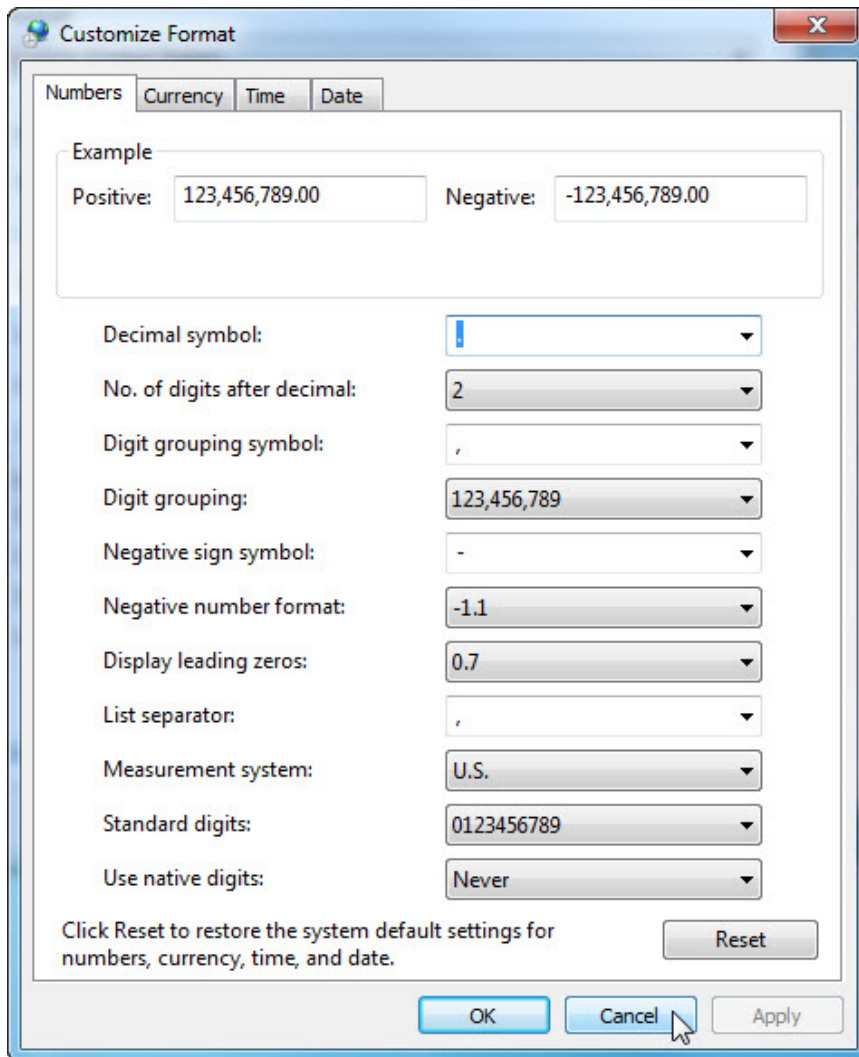
The “Regional and Language” window opens.



What regional format is being used?

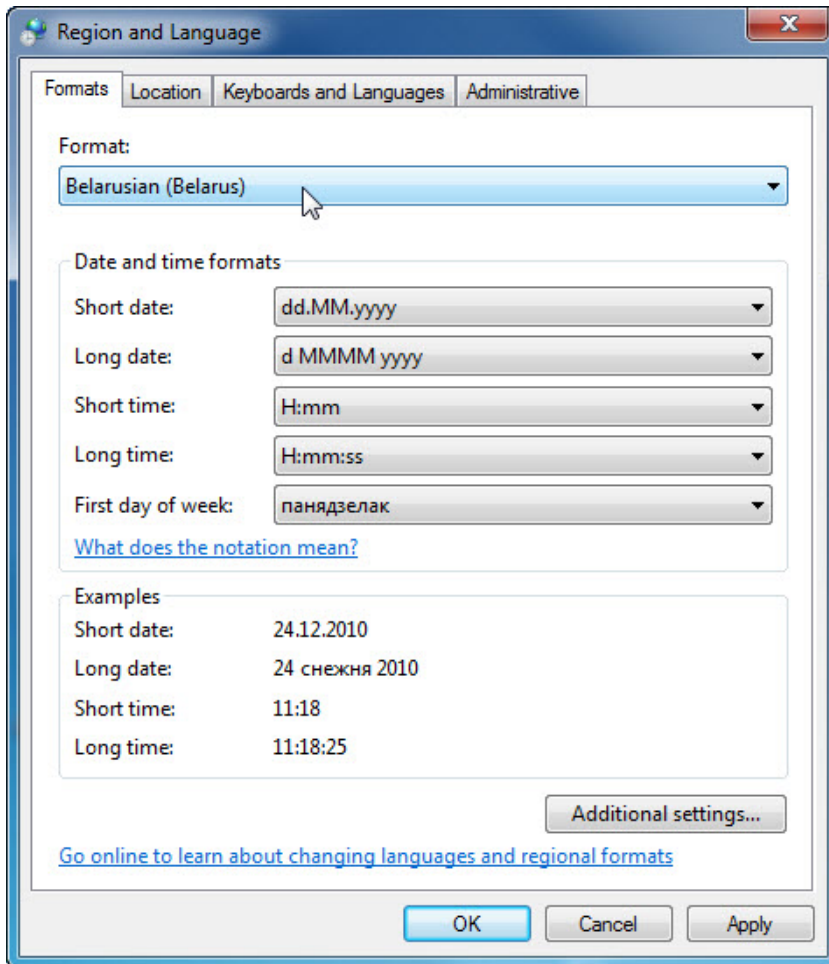
Click **Additional settings**.

The "Customize Format" window opens.



What are the tabs that can be customized?

Click **Cancel**.

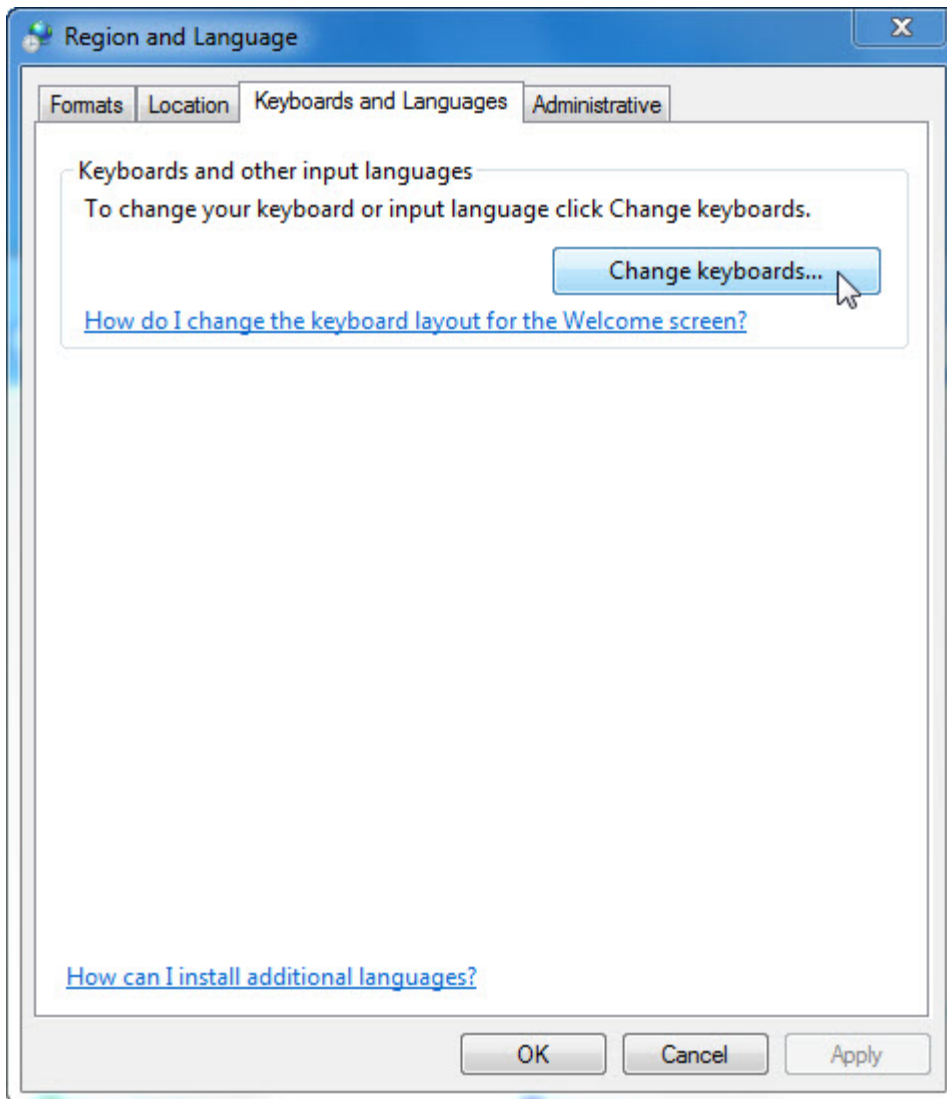


Click the drop-down menu in “Format” area. Select **Belarusian (Belarus)**.

Notice the changes to the output in the “Examples” area of how data is displayed using this format.

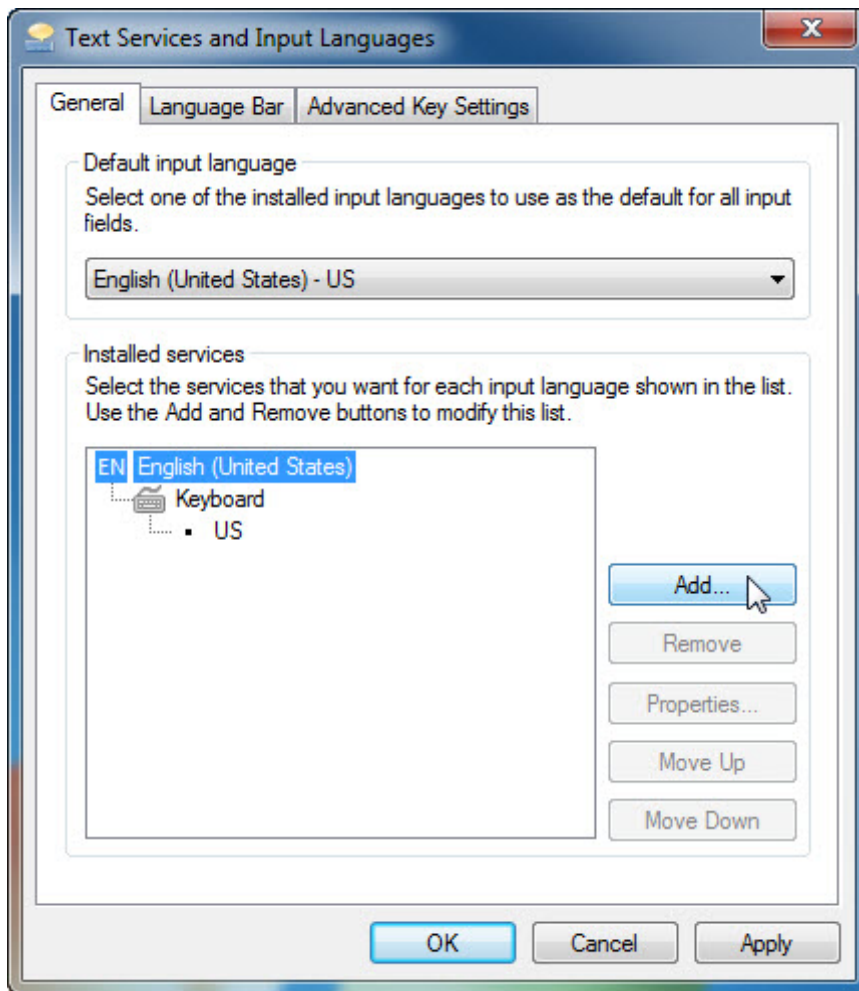
Click the drop-down menu in the “Format” area.

Return the setting to the original format.



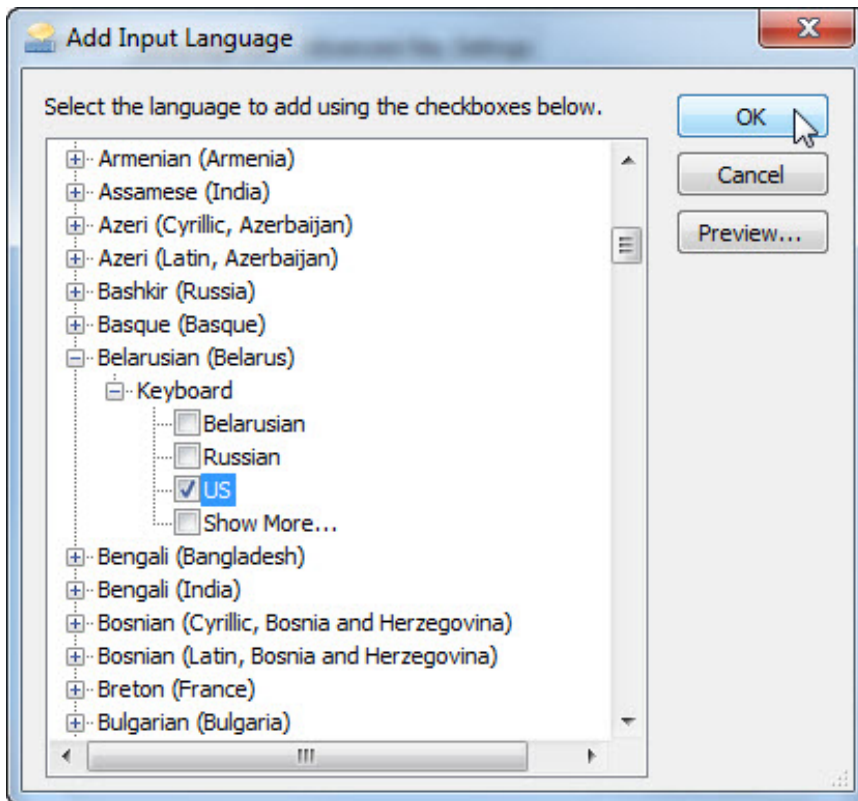
Click **Keyboards and Languages** tab > **Change keyboards**.

The “Text Services and Input Languages” window opens.



Click **Add**.

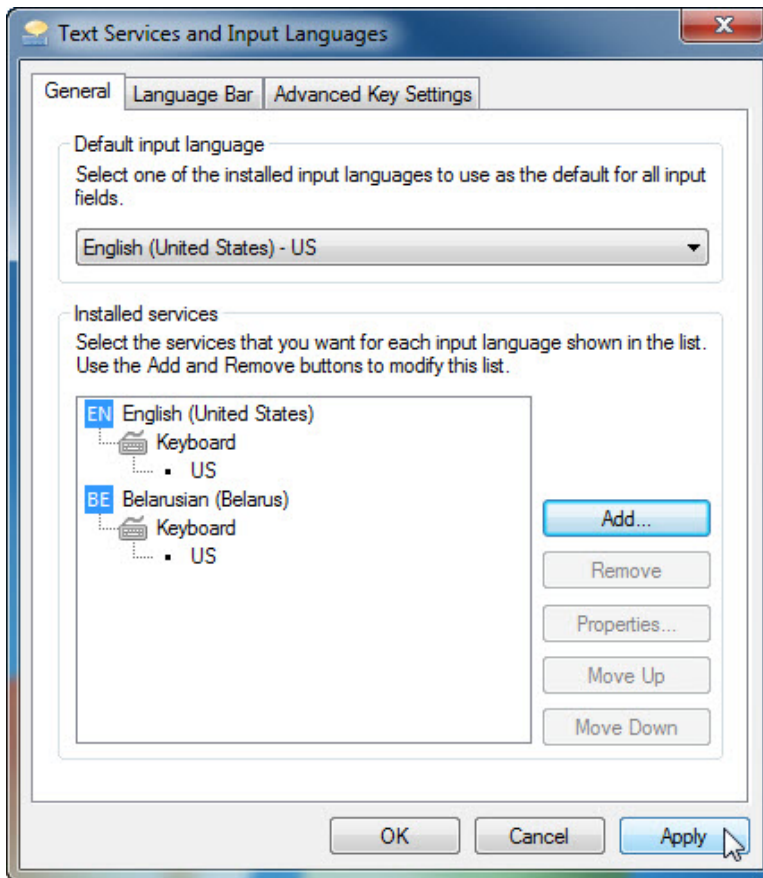
The "Add Input Language" window opens.



Scroll down the list of options and expand **Belarusian (Belarus) > Keyboard > select US > OK.**

Click **Apply** to accept the changes.

The "Text Services and Input Languages" window appears.



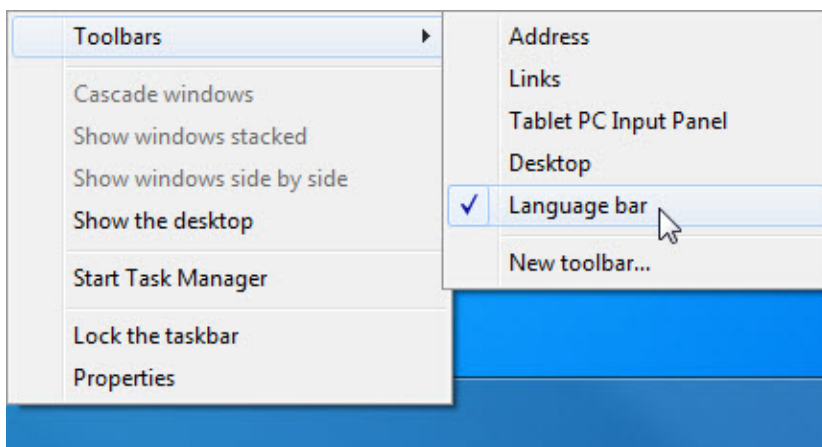
What is the default input language?

Close all opened windows

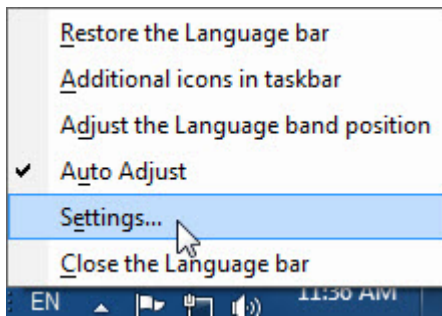
Step 2

Right-click the **Taskbar**.

Select **Toolbars > Language bar** to ensure that the Language bar is shown in the Taskbar.

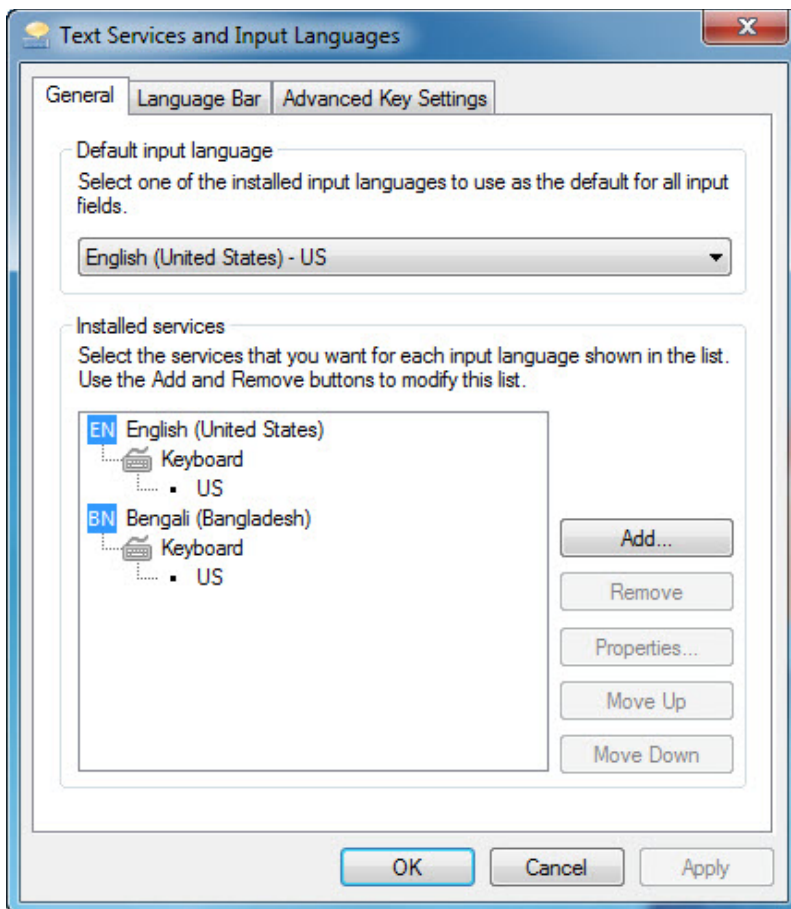


Right-click the **Language bar** in the Taskbar.



Select **Settings**.

The "Text Service and Input Languages" window opens.



What is the Default input language?

Close all open windows.