

IT Essentials 5.0

5.3.7.4 Lab - Run Line Utilities in Windows 7

Introduction

Print and complete this lab.

In this lab, you will use Windows Run line utilities to access and use tools to configure settings in Windows 7.

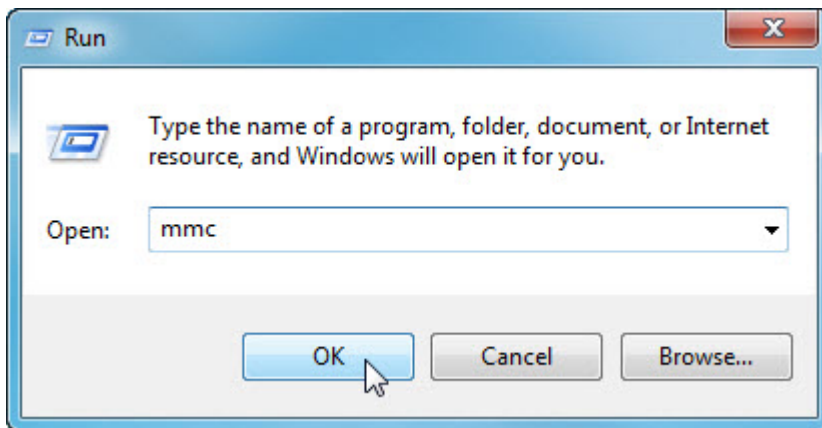
Recommended Equipment

The following equipment is required for this exercise:

- A computer running Windows 7

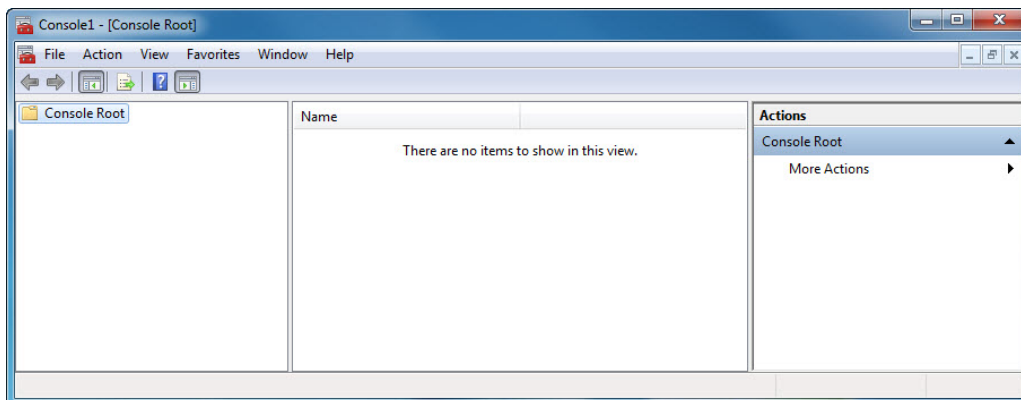
Step 1

Navigate to the “Run” window by clicking **Start > Run**. Type **mmc** and click **OK**. If the “User Account Control” window appears, click **Yes**.



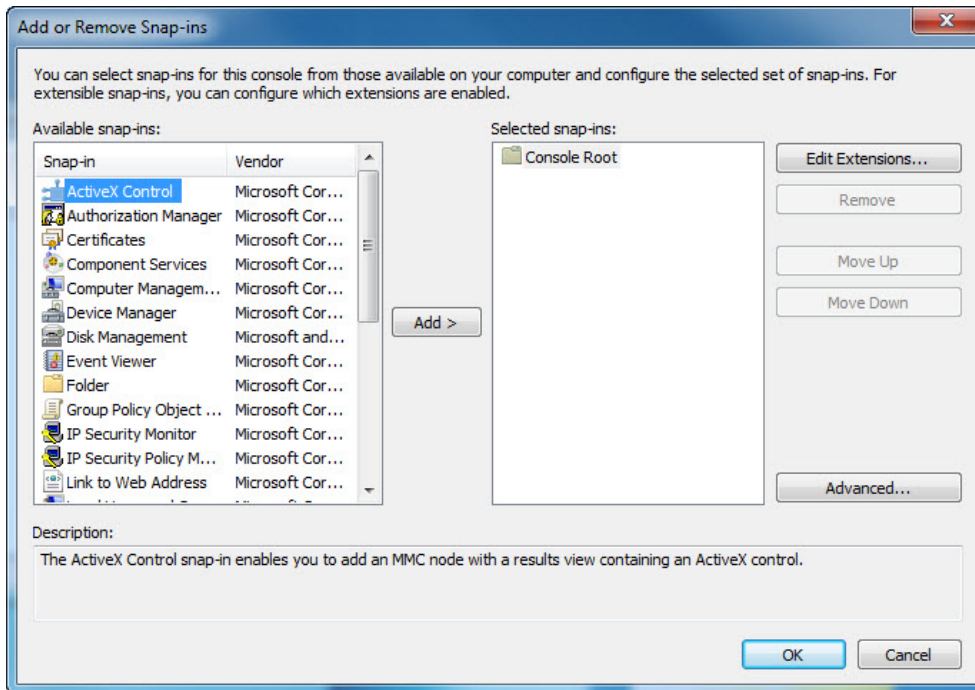
Step 2

The “Console1 - [Console Root]” (console number may vary) window opens.

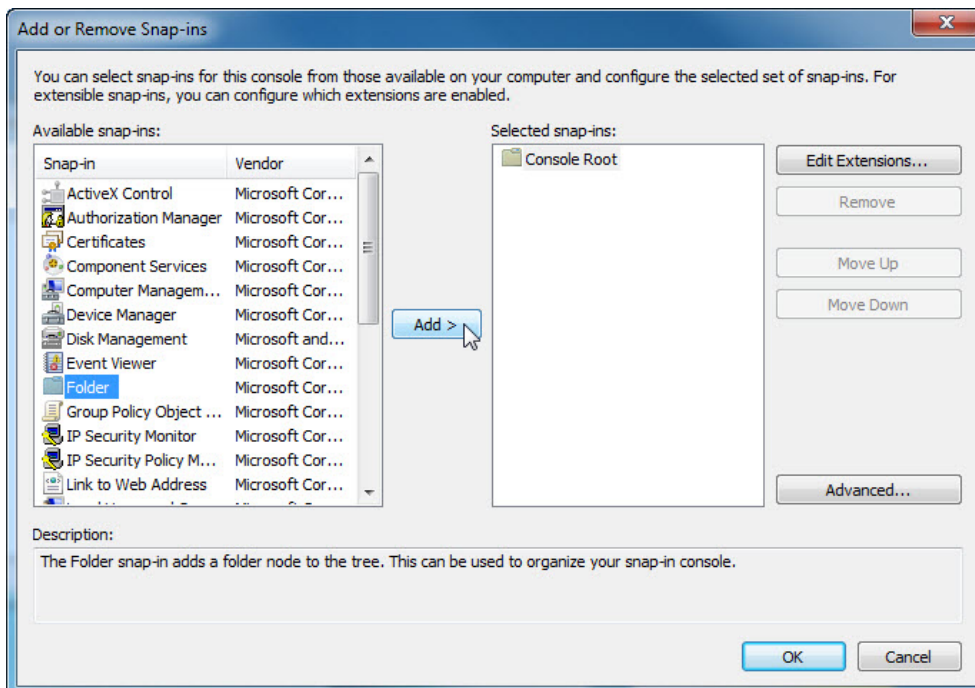


Step 3

To build your own custom console, click **File > Add/Remove Snap-in**.

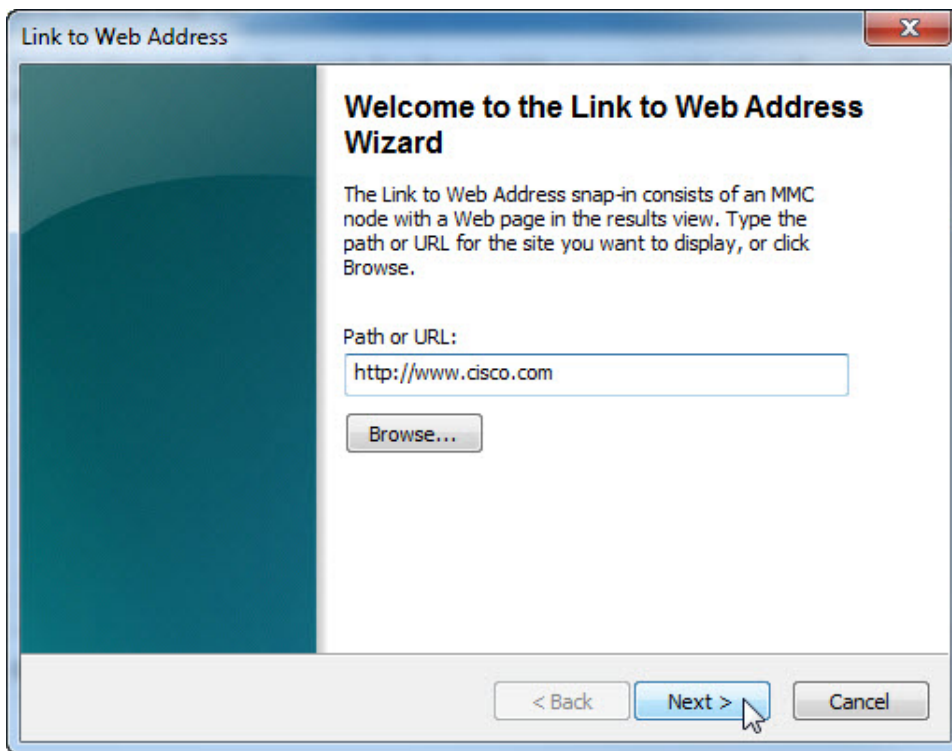


The "Add or Remove Snap-ins" window opens.



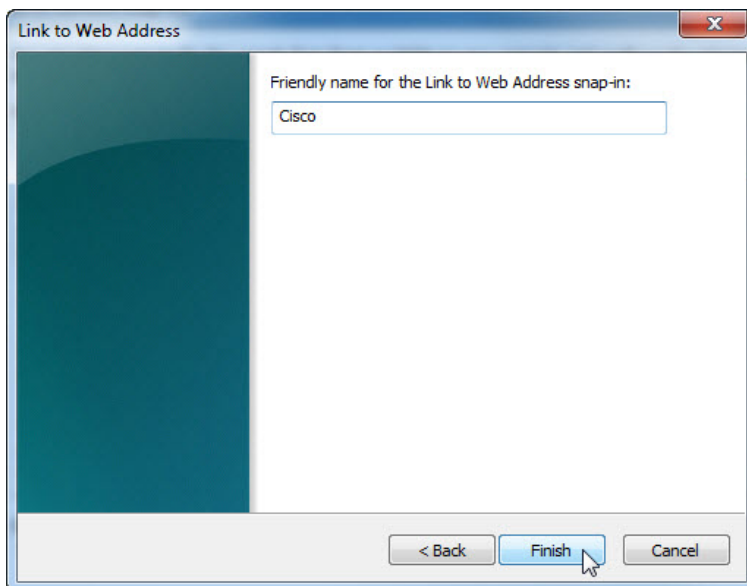
To add a folder snap-in so that you can organize all your snap-ins, scroll down until you see the Folder snap-in. Select **Folder >** click **Add**.

To add the “Link to Web Address” snap-in, scroll down until you see the snap-in. Select **Link to Web Address** > click **Add**. The “Link to Web Address” wizard opens. In the Target box type **http://www.cisco.com**.



Click **Next**.

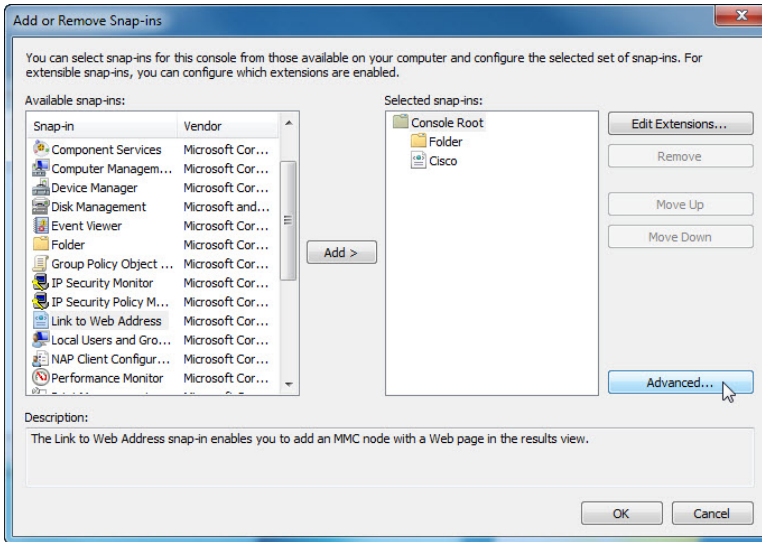
In the “Friendly name for the Link to Web Address snap-in” box, type **Cisco**.



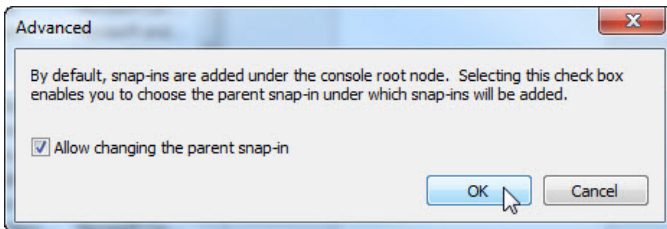
Click **Finish**.

Step 4

To add snap-ins to the folder snap-in, click **Advanced**.

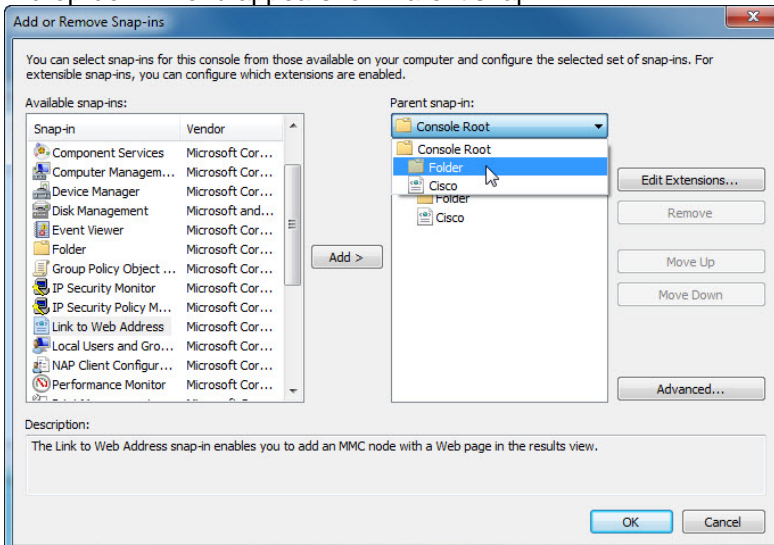


Check the **box** next to Allow changing the parent snap-in.



Click **OK**.

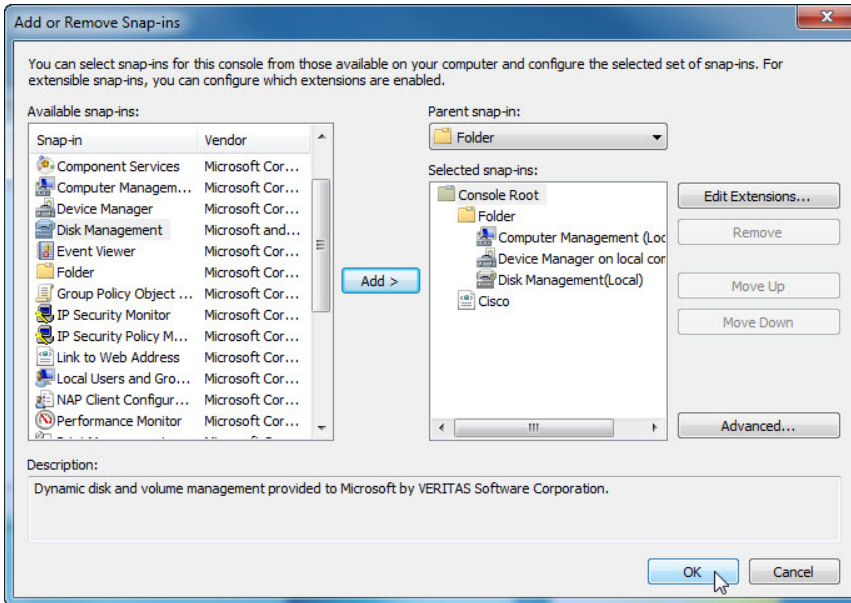
A drop-down menu appears for "Parent snap-in".



In the "Parent snap-in" box, select **Folder**.

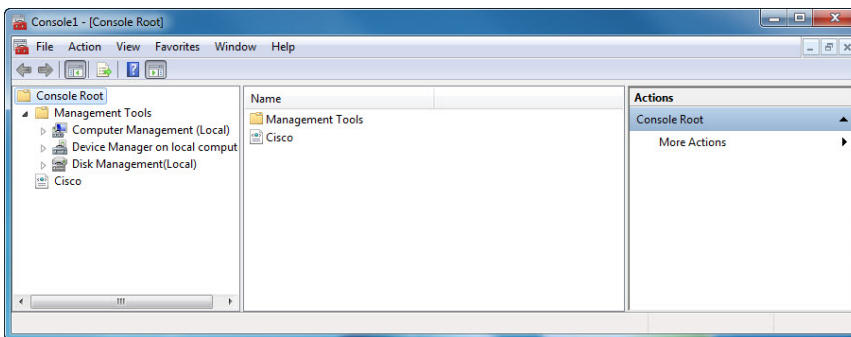
Add the following snap-ins: Computer Management, Device Manager, and Disk Management.

Note: When you are asked what computer the snap-in will manage, select the default by clicking **Finish**. Click **OK** to accept all changes.



Step 5

The “Console1” window appears. Right-click the Folder icon and select **Rename**. Change the name of the folder to “Management Tools”.

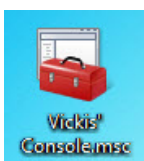


To save the custom console, click **File > Save As**. Change the file name to your name. Example: **John’s Console**. Change the “Save in” box to **Desktop**. Click **Save**.

Step 6

Close all open windows.

On the desktop, double-click the **Console** icon to re-open the console with your snap-ins.

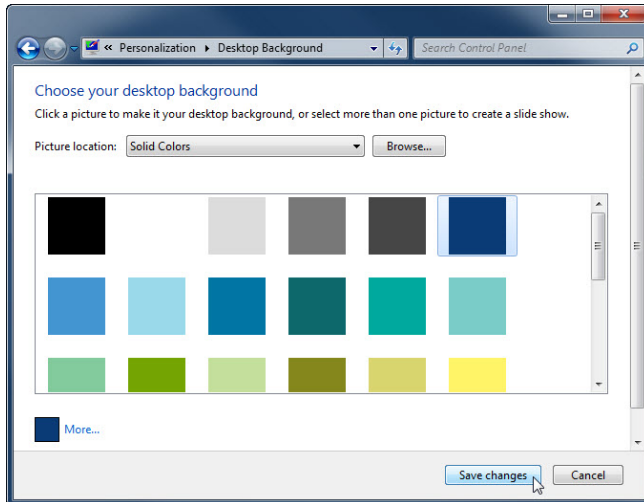


Step 7

Open the “Choose your desktop background” page in Personalize appearance and sounds by right-clicking the **Desktop > Personalize > Desktop Background**.

What is the Background picture?

Click the **Picture location** drop-down button and select **Solid Colors**. Select a **blue** color.



Click **Save changes**.

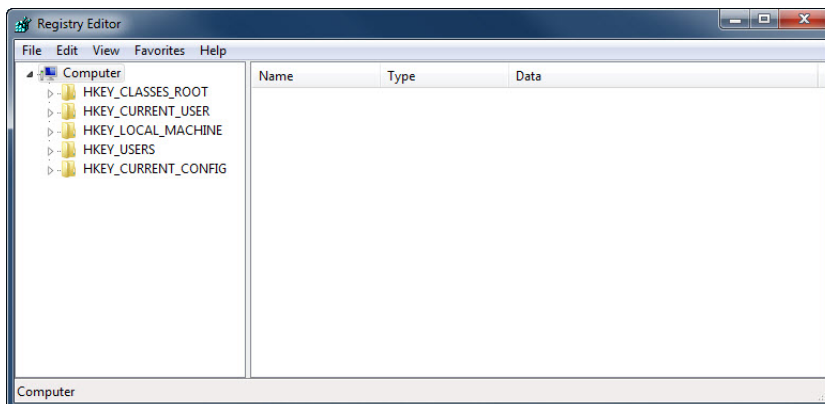
The computer screen should now have a blue background. If not, ask the instructor for assistance.

Step 8

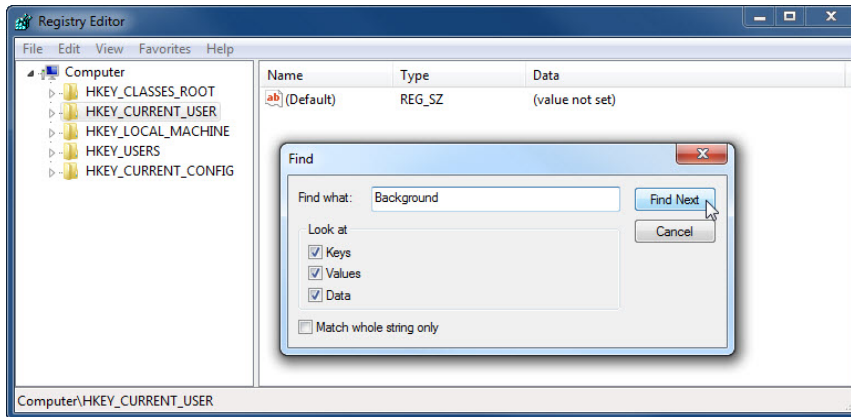
Open Registry Editor by clicking **Start > Run > type regedit > click OK**.

If the “User Account Control” window appears, click **Yes**.

Note: Do not make any changes in the Registry Editor without instructor permission.

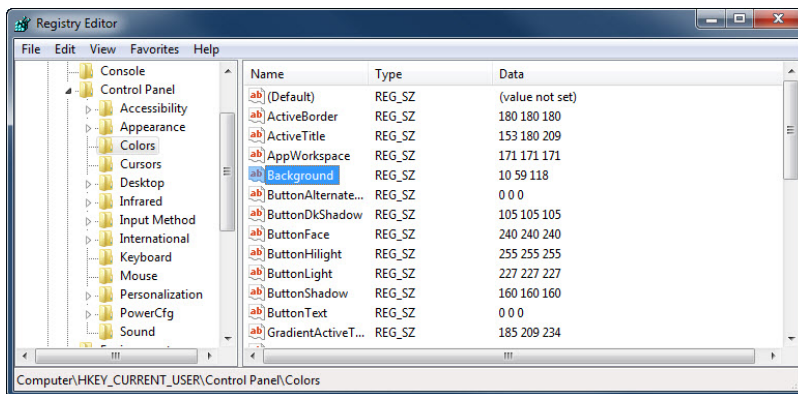


Click the **HKEY_CURRENT_USER** icon.



To search for the desktop Background key, click **Edit > Find >** type **Background >** click **Find Next**.

The Background value is located. Leave this window open.



In which folder is the Background located?

What is the data value of the Background (hint – it has three numbers that correspond to red, green, and blue)? Answers may vary based on the shade of blue selected in Choose your desktop background.

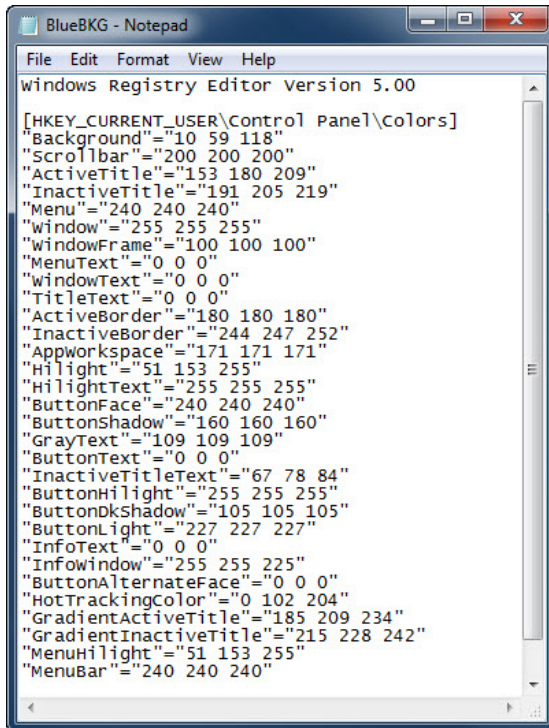
Step 9

We will now export the **HKEY_CURRENT_USER\Control Panel\Colors** folder.

In the left pane, click the **Colors** folder.

Click **File > Export**. Save the file to the Desktop with the name **BlueBKG**.

At the desktop, right-click the **BlueBKG.reg** icon > **Edit**.



```
BlueBKG - Notepad
File Edit Format View Help
windows Registry Editor Version 5.00

[HKEY_CURRENT_USER\Control Panel\Colors]
"Background"="10 59 118"
"Scrollbar"="200 200 200"
"ActiveTitle"="153 180 209"
"InactiveTitle"="191 205 219"
"Menu"="240 240 240"
"Window"="255 255 255"
"WindowFrame"="100 100 100"
"MenuText"="0 0 0"
"WindowText"="0 0 0"
"TitleText"="0 0 0"
"ActiveBorder"="180 180 180"
"InactiveBorder"="244 247 252"
"Appworkspace"="171 171 171"
"Highlight"="51 153 255"
"HighlightText"="255 255 255"
"ButtonFace"="240 240 240"
"ButtonShadow"="160 160 160"
"GrayText"="109 109 109"
"ButtonText"="0 0 0"
"InactiveTitleText"="67 78 84"
"ButtonHighlight"="255 255 255"
"ButtonKshadow"="105 105 105"
"ButtonLight"="227 227 227"
"InfoText"="0 0 0"
"Infowindow"="255 255 225"
"ButtonAlternateFace"="0 0 0"
"HotTrackingColor"="0 102 204"
"GradientActiveTitle"="185 209 234"
"GradientInactiveTitle"="215 228 242"
"MenuHighlight"="51 153 255"
"MenuBar"="240 240 240"
```

What is the data value of the Background? Answers may vary based on the shade of blue selected in Display Properties.

Close the **BlueBKG.reg – Notepad** window.

Step 10

Open the “Choose your desktop background” page in Personalize appearance and sounds by right-clicking the **Desktop > Personalize > Desktop Background**.

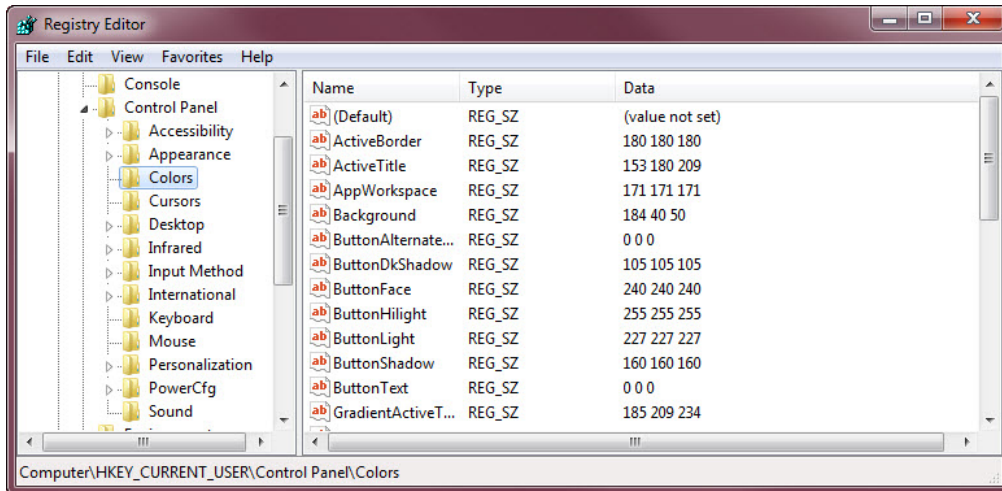
Click the **Location** drop-down button and select **Solid Colors**. Select a **red** color.

Click **Save changes**.

In a few seconds, the desktop will turn to red.

Click the **Registry Editor** window so it is activated.

On your keyboard, press **F5** to refresh the “Registry Editor” window.



What is the data value of the Background? Answers may vary based on the shade of red selected in Display Properties.

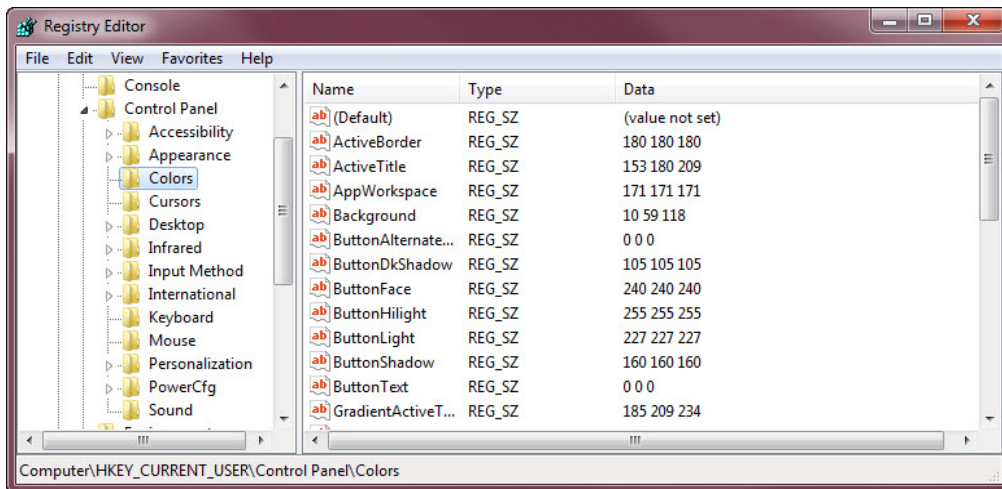
Step 11

We will now import **BlueBKG.reg** file.

Click the "Registry Editor" window so it is activated.

Click **File > Import**. Locate and click the **BlueBKG.reg** icon then click **Open**.

Click **OK**.



Click the Registry Editor window so it is activated.

What is the data value of the Background? Answers may vary based on the shade of blue selected in Display Properties.

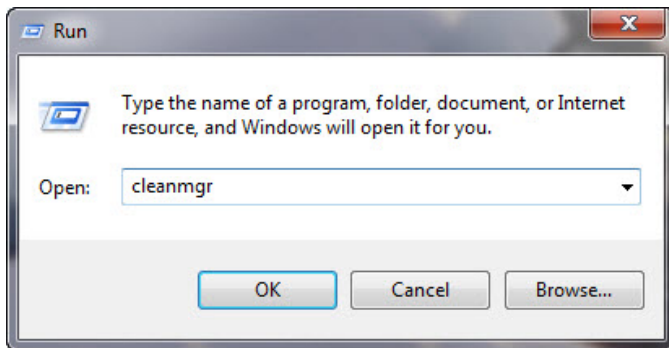
What is the color of the desktop?

Restart the computer.
What is the color of the desktop?

Reset Display Properties Background to the original settings (hint – see Step 7).

Step 12

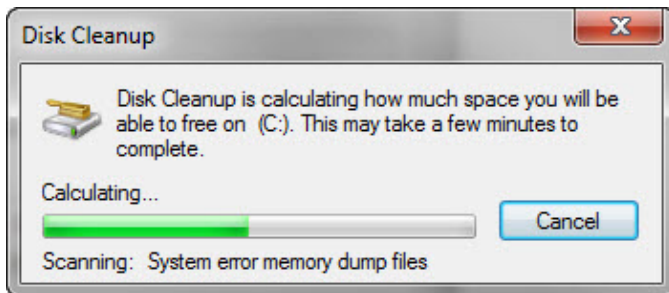
Open the Run dialog box by clicking **Start**, and in the Search programs and files box, type **Run** and press **Enter**.



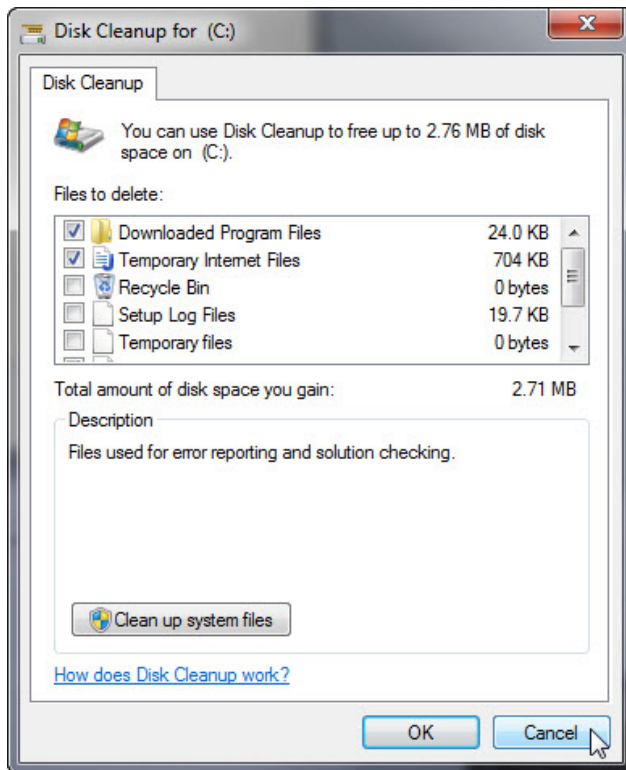
Type **cleanmgr** in the "Open:" field.

Click **OK**.

The "Disk Cleanup" window opens and calculates available free space.



The "Disk Cleanup for (C:)" window opens.



Make sure only Downloaded Program Files and Temporary Internet Files are selected.

Click the **OK** button.

Why should disk cleanup be performed regularly?