

IT Essentials 5.0

5.3.7.6 Lab - Run Line Utilities in Windows XP

Introduction

Print and complete this lab.

In this lab, you will use Windows Run line utilities to access and use tools to configure settings in Windows XP.

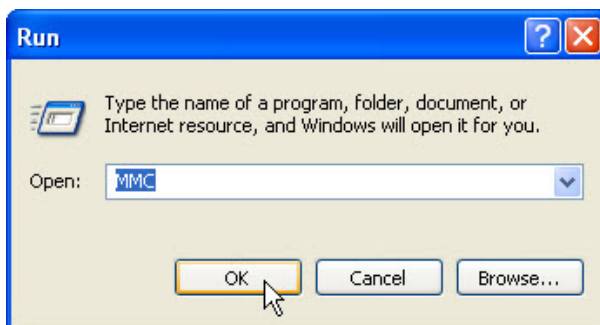
Recommended Equipment

The following equipment is required for this exercise:

- A computer running Windows XP

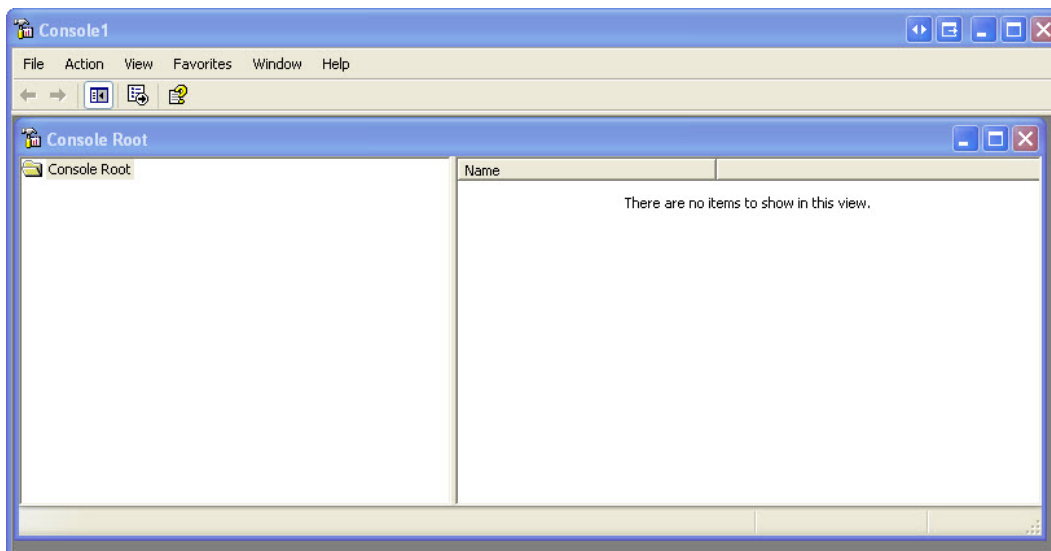
Step 1

Navigate to the “Run” window by clicking **Start > Run**. Type **MMC** and click **OK**.



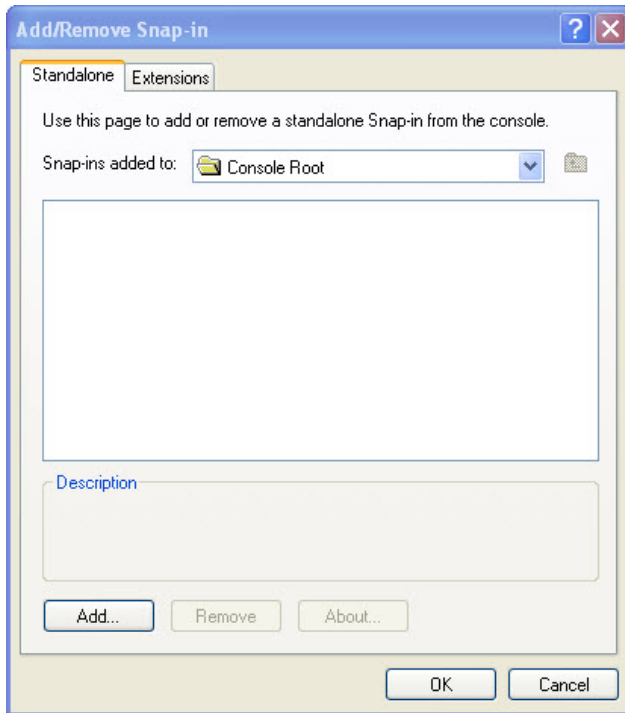
Step 2

The “Console1” (console number may vary) window and the “Console Root” window open.

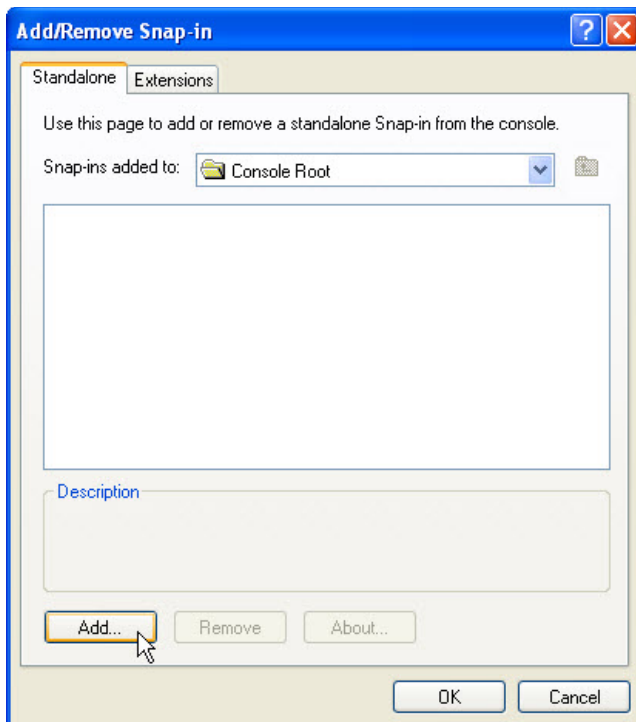


Step 3

To build your own custom console, click **File > Add/Remove Snap-in**.

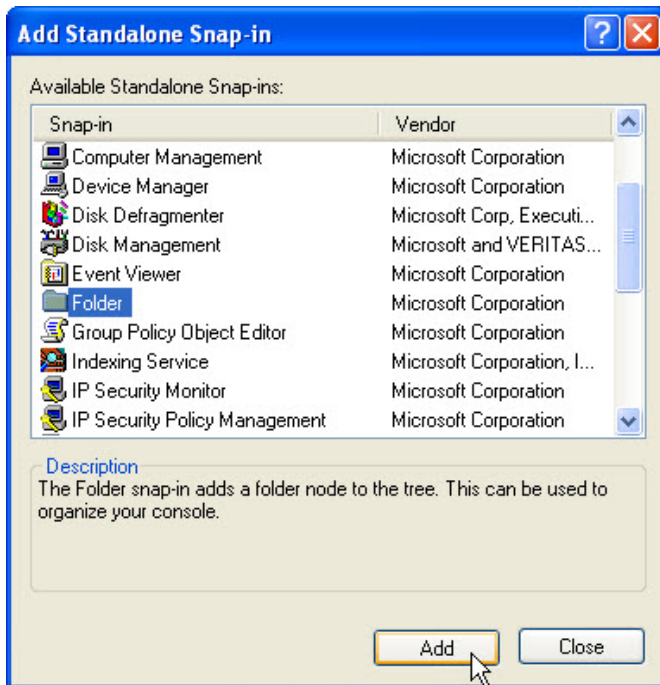


The "Add/Remove Snap-in" window opens.



To add a snap-in, click **Add**.

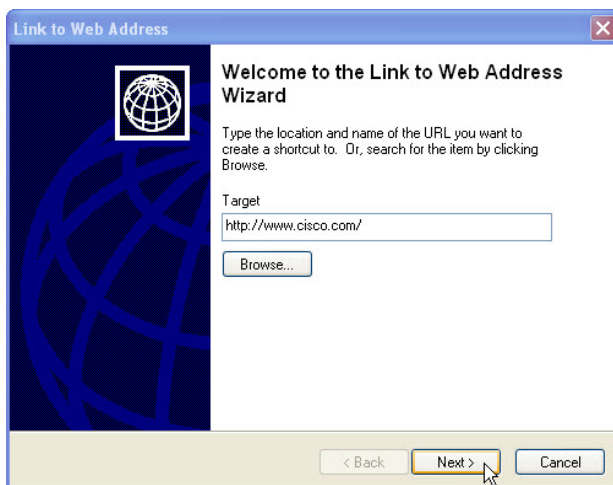
The "Add Standalone Snap-in" window appears. To add a folder snap-in so that you can organize all your snap-ins, scroll down until you see the Folder snap-in.



Select **Folder** > click **Add**.

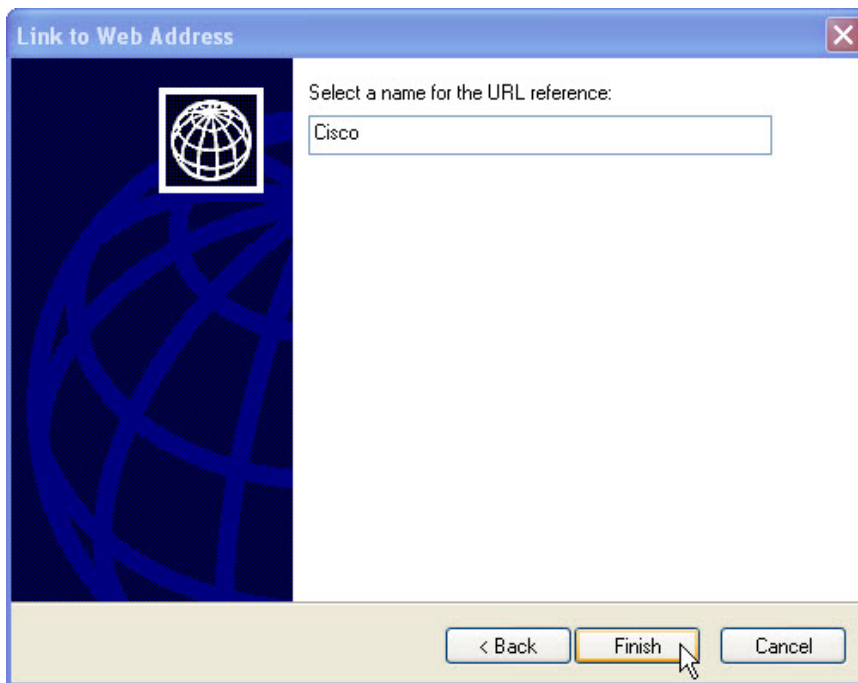
To add the “Link to Web Address” snap-in, scroll down until you see the snap-in. Select **Link to Web Address** > click **Add**.

The “Link to Web Address” wizard opens.

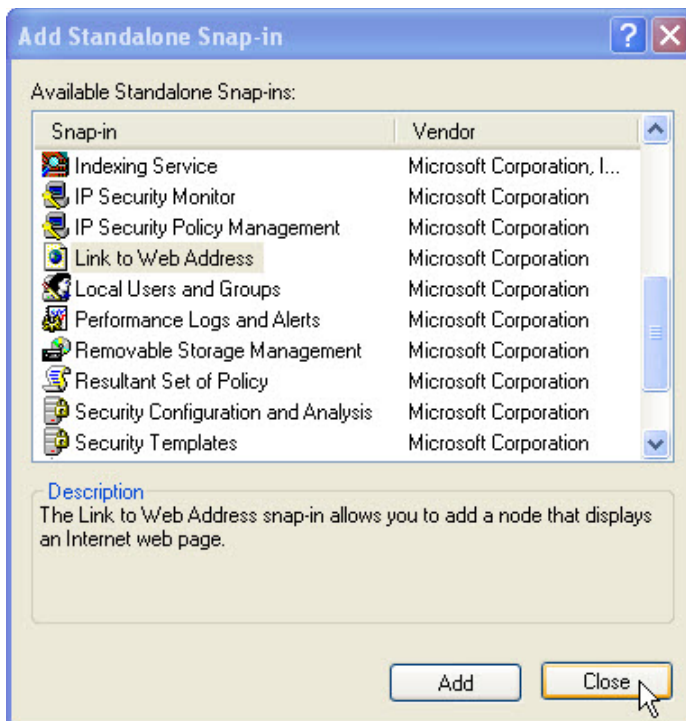


In the Target box, type **http://www.cisco.com/**. Click **Next**.

In the “Select a name for the URL reference” box, type **Cisco**.



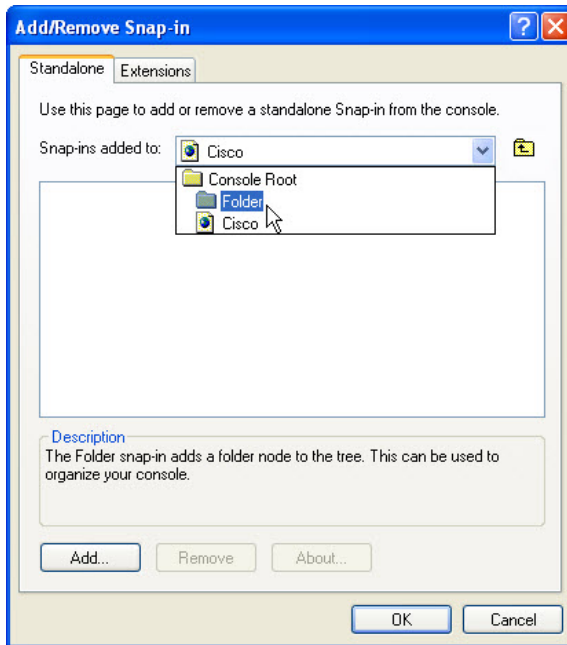
Click **Finish**.



Click **Close**.

Step 4

Click the “Add/Remove Snap-in” window so it is activated. In the “Snap-ins added to” box, select **Folder**.



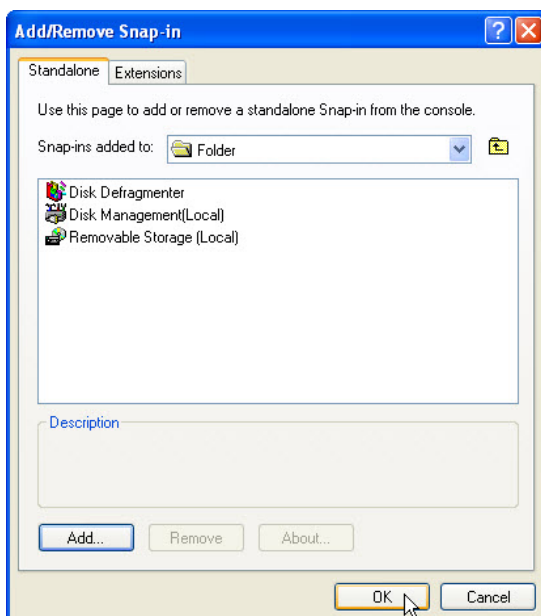
Click **Add**.

Add the following snap-ins: Disk Defragmenter, Disk Management, and Removable Storage Management.

Note: When asked which computer the snap-in will manage, select the default by clicking **Finish**.

To close the “Add Standalone Snap-in” window, click **Close**.

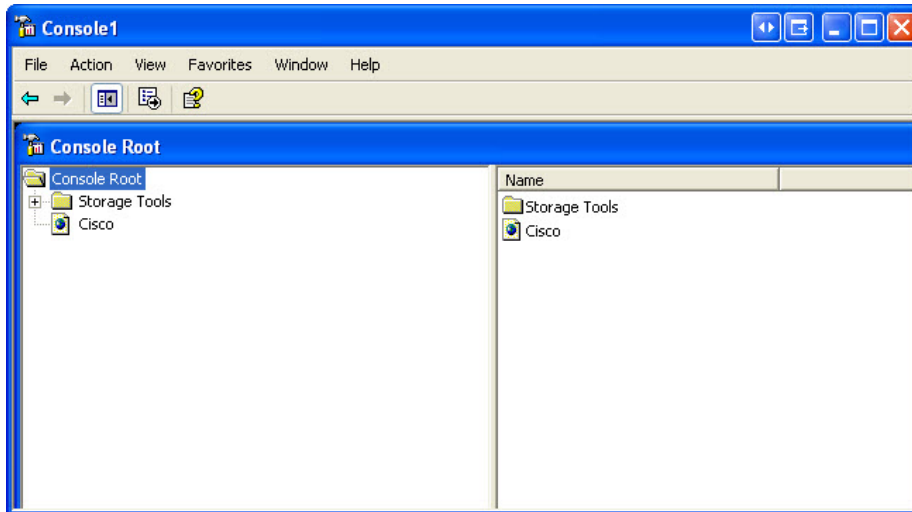
Click the “Add/Remove Snap-in” window so it is activated.



Click **OK**.

Step 5

The “Console1” window appears. Right-click the Folder icon and select **Rename**.



Change the name of the folder to “Storage Tools”.

To save the custom console, click **File > Save As**. Change the file name to your name. Example: **John’s Console**. Change the “Save in” box to **Desktop**. Click **Save**.

Step 6

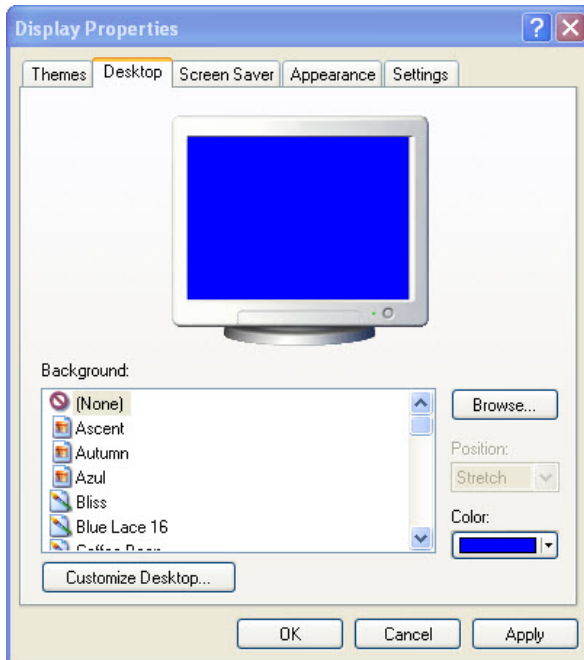
Close all open windows.

On the desktop, double-click the **Console** icon to re-open the console with your snap-ins.

**Step 7**

Open the Desktop tab in Display Properties by right-clicking the **desktop > Properties > Desktop** tab.

What is the Background picture?



Set the background image to (None). If the **Color** drop-down button is not blue, click the **Color** drop-down menu and select **blue**.

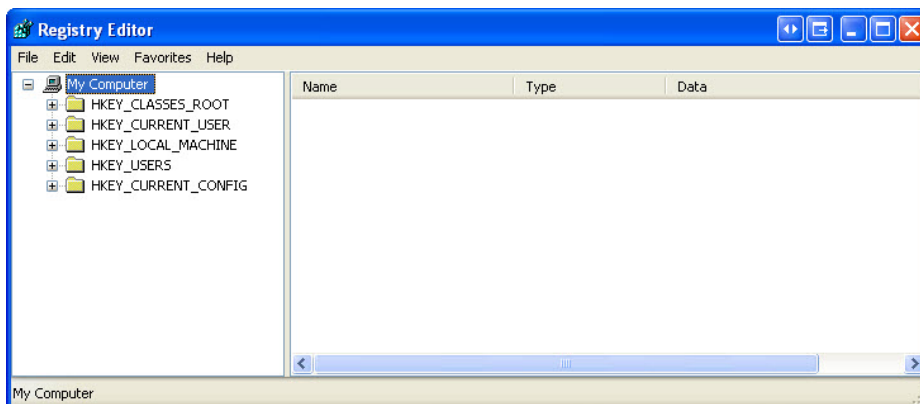
Click **OK**.

The computer screen should now have a blue background. If not, ask the instructor for assistance.

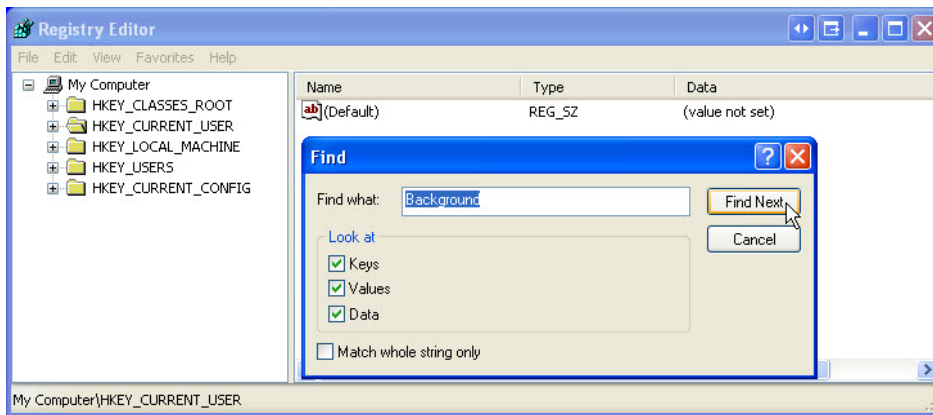
Step 8

Open Registry Editor by clicking **Start > Run > type regedit > click OK**.

Note: Do not make any changes in the Registry Editor without instructor permission.

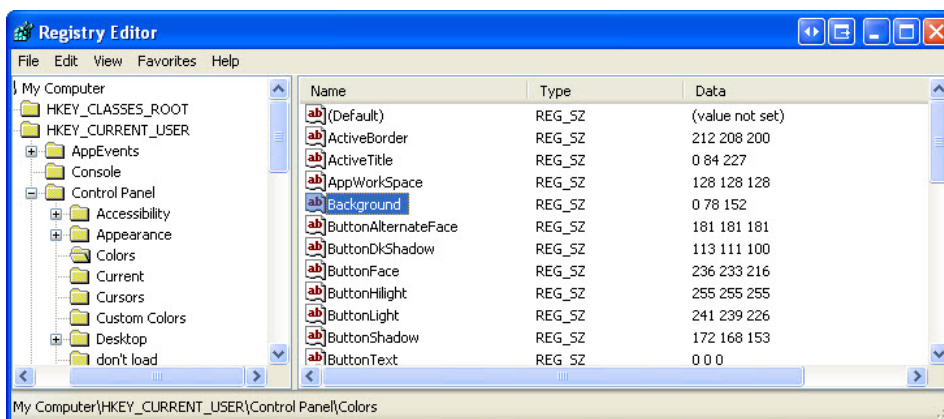


Click the **HKEY_Current_User** icon.



To search for the desktop Background key, click **Edit > Find > type Background > click Find Next**.

The Background value is located. Leave this window open.



In which folder is the Background located?

What is the data value of the Background (hint – it has three number that corresponds to red, green blue)? Answers may vary based on the shade of blue selected in Display Properties.

Step 9

We will now export **HKEY_CURRENT_USER\Control Panel\Colors** folder.

In the left pane, click the **Colors** folder.

Click **File > Export**. Save the file to the Desktop. File name: **BlueBKG**

At the desktop, right-click the **BlueBKG.reg** icon > **Edit**.

A screenshot of a Notepad window titled "BlueBKG.reg - Notepad". The window contains text representing registry data for the Windows Registry Editor. The path is [HKEY_CURRENT_USER\Control Panel\Colors]. The text lists various registry values and their data, including "Background" which is set to "0 78 152".

```
Windows Registry Editor Version 5.00

[HKEY_CURRENT_USER\Control Panel\Colors]
"ActiveBorder"="212 208 200"
"ActiveTitle"="0 84 227"
"Appworkspace"="128 128 128"
"Background"="0 78 152"
"ButtonAlternateFace"="181 181 181"
"ButtonDkshadow"="113 111 100"
"ButtonFace"="236 233 216"
"ButtonHighlight"="255 255 255"
"ButtonLight"="241 239 226"
"ButtonShadow"="172 168 153"
"ButtonText"="0 0 0"
"GradientActiveTitle"="61 149 255"
"GradientInactiveTitle"="157 185 235"
"GrayText"="172 168 153"
"Highlight"="49 106 197"
"HighlightText"="255 255 255"
"HotTrackingColor"="0 0 128"
"InactiveBorder"="212 208 200"
"InactiveTitle"="122 150 223"
"InactiveTitleText"="216 228 248"
"InfoText"="0 0 0"
"Infowindow"="255 255 225"
"Menu"="255 255 255"
"MenuText"="0 0 0"
"Scrollbar"="212 208 200"
"TitleText"="255 255 255"
"Window"="255 255 255"
"WindowFrame"="0 0 0"
"WindowText"="0 0 0"
"MenuHighlight"="49 106 197"
"MenuBar"="236 233 216"
```

What is the data value of the Background? Answers may vary based on the shade of blue selected in Display Properties.

Close **BlueBKG.reg – Notepad** window.

Step 10

Open the Desktop tab in Display Properties by right-clicking the **desktop > Properties > Desktop** tab.

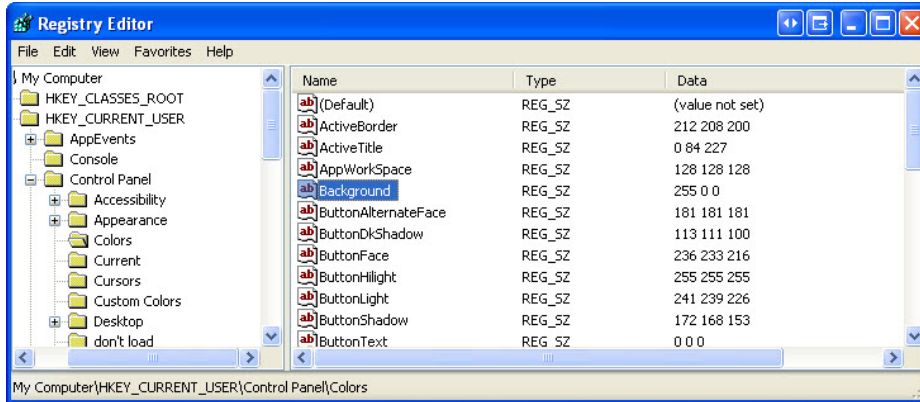
Click the **Color** drop-down button, select **red**.

Click **OK**.

In a few seconds, the desktop will turn to red.

Click the Registry Editor window so it is activated.

On your keyboard, press **F5** to refresh the Registry Editor window.



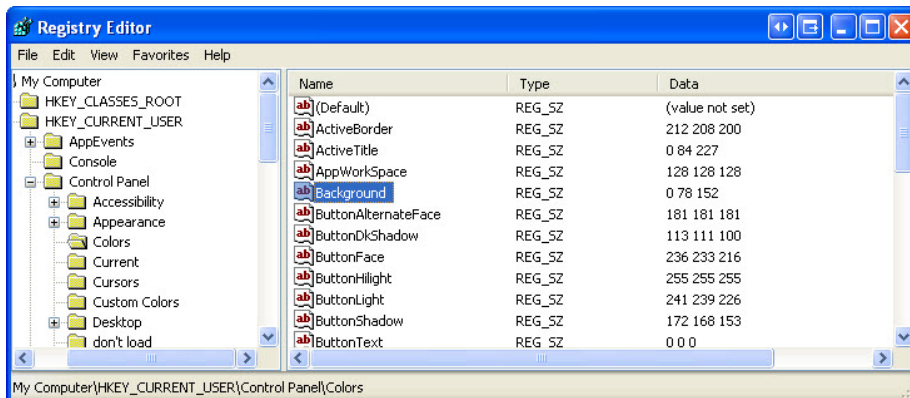
What is the data value of the Background? Answers may vary based on the shade of red selected in Display Properties.

Step 11

We will now import **BlueBKG.reg** file.

Click the “Registry Editor” window so it is activated.

Click **File > Import**. Locate and click the **BlueBKG.reg** icon then click **Open**. Click **OK**.



Click the “Registry Editor” window so it is activated.

What is the data value of the Background? Answers may vary based on the shade of red selected in Display Properties.

What is the color of the desktop?

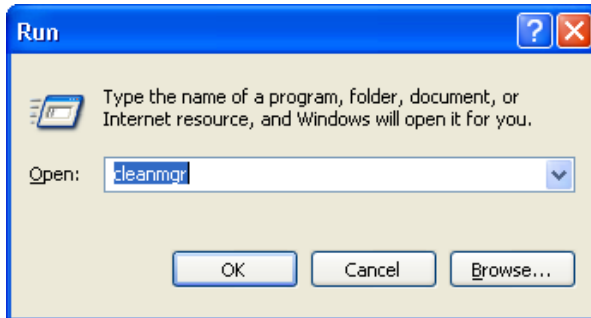
Restart the computer.

What is the color of the desktop?

Reset Display Properties Background to the original settings (hint – see step 7).

Step 12

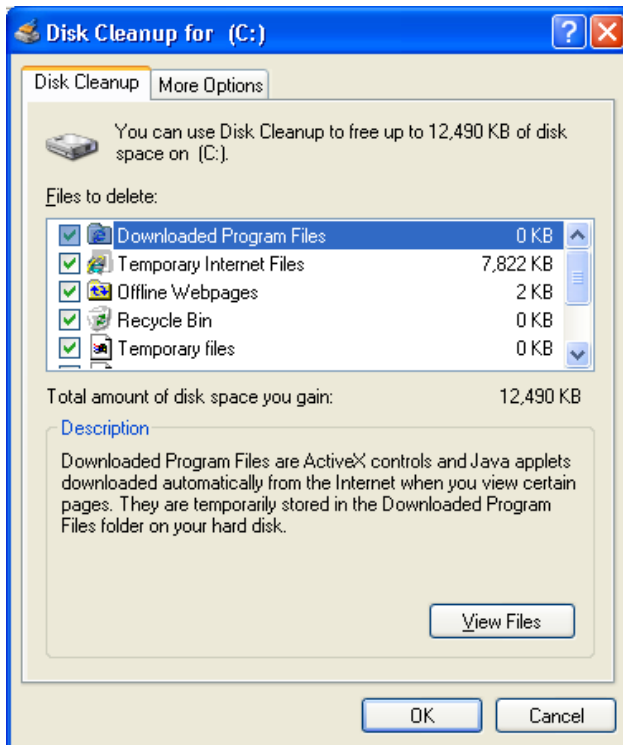
Open the Run dialog box by clicking **Start > Run....**



Type **cleanmgr** in the “Open:” field.

Click **OK**.

The “Disk Cleanup for (C:)” window opens.



Click the **OK** button.

Why should disk cleanup be performed regularly?