

IT Essentials 5.0

5.5.1.3 Lab - Managing the Startup Folder in Windows Vista

Introduction

Print and complete this lab.

In this lab, you will customize the Startup Folder and the RunOnce Key in the Registry.

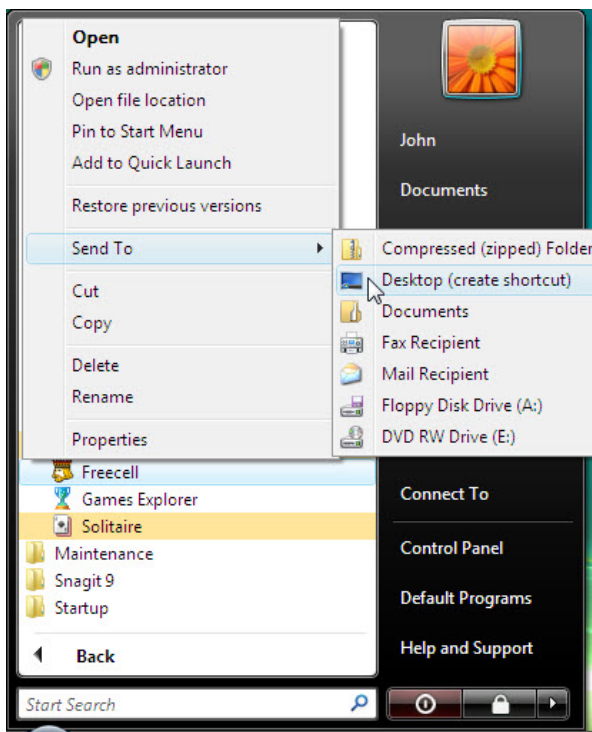
Recommended Equipment

The following equipment is required for this exercise:

- A computer running Windows Vista

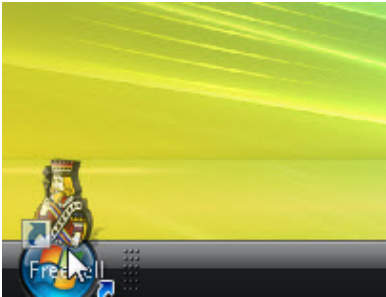
Step 1

Click **Start > All Programs > Games > right-click FreeCell > Send To > Desktop (create shortcut)**.



Step 2

Click and drag the shortcut **FreeCell** icon to the **Start** button.



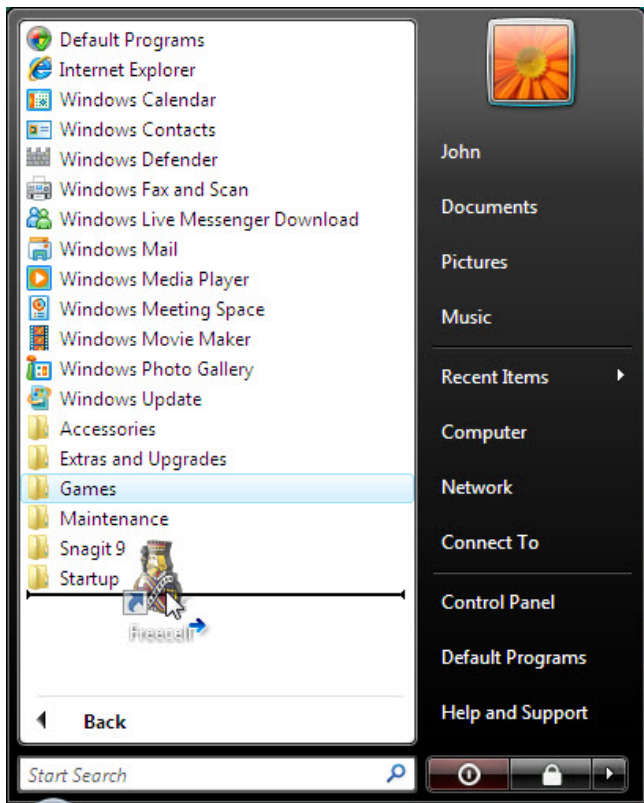
The “Start” menu appears.

Do not release the shortcut icon.

Drag the icon to **All Programs**.

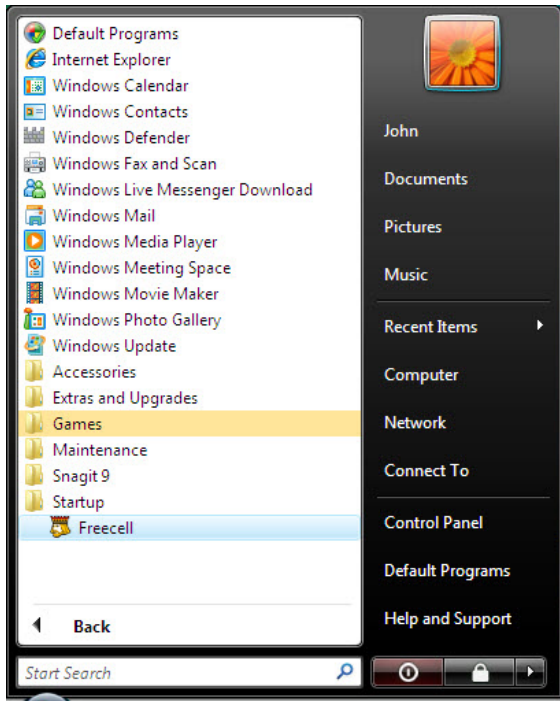
The “All Programs” menu appears.

Drag the icon to the bottom of the **Startup** folder.



When a blue arrow appears next to the FreeCell shortcut icon, release the icon.

Click **Startup**.



You should see the FreeCell icon listed below Startup.

Step 3

Log off Windows.

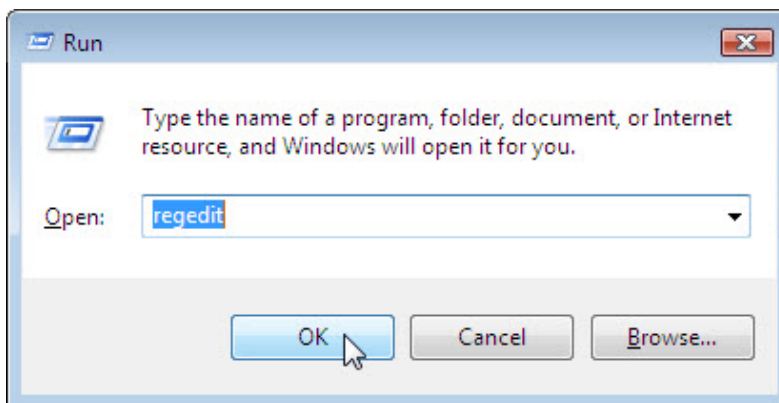
Log on to Windows as an Administrator.

What happens when you log in?

Close the FreeCell application.

Step 4

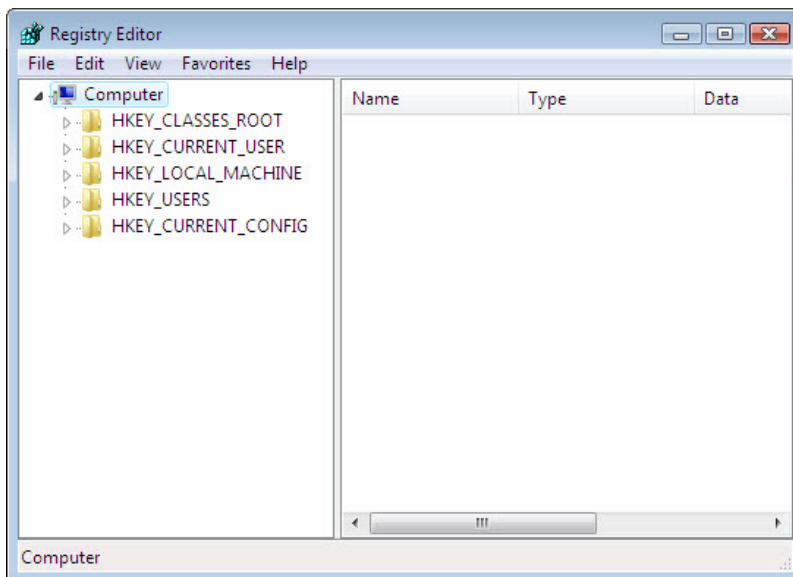
Click **Start > Start Search > type run**.



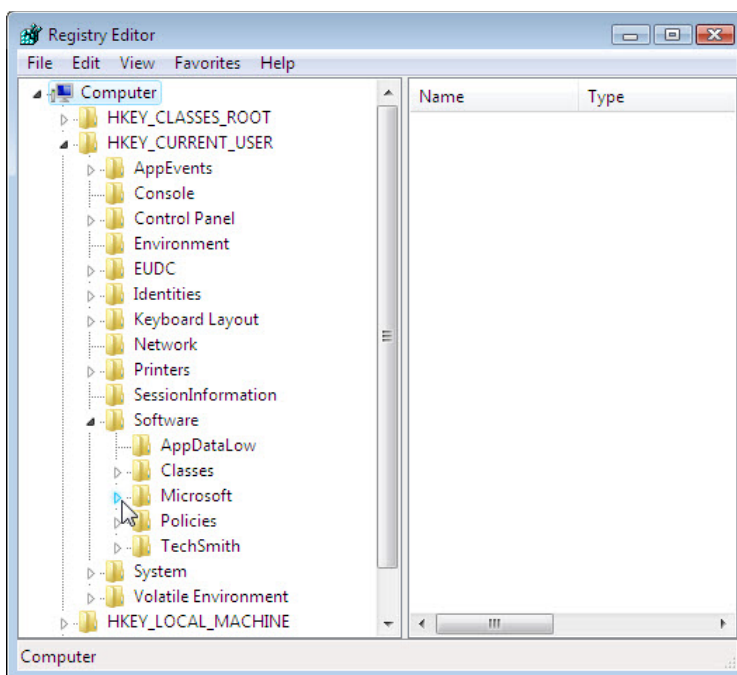
Type **regedit** in the "Open:" field > **OK > Continue**.

CAUTION: Incorrect changes to the registry can cause system errors and/or system instability.

The “Registry Editor” window opens.



Expand the **HKEY_CURRENT_USER** Key.

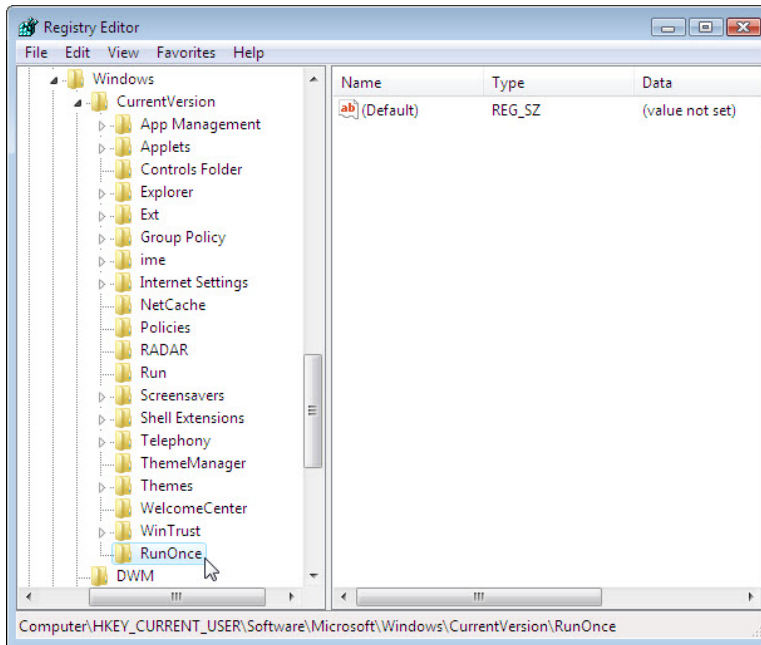


Expand the **Software** Key.

Expand the **Microsoft** Key.

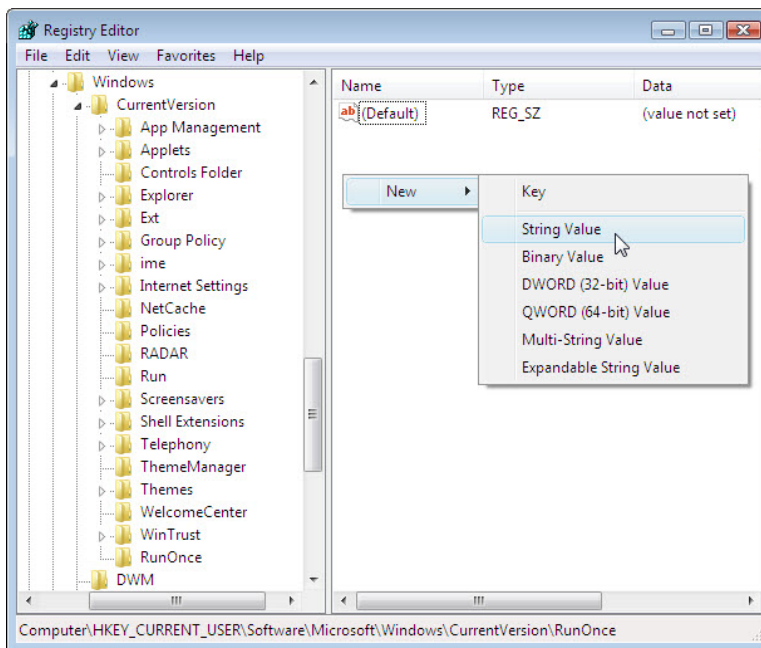
Expand the **Windows** Key.

Expand the **CurrentVersion** Key.



Select the **RunOnce** Key.

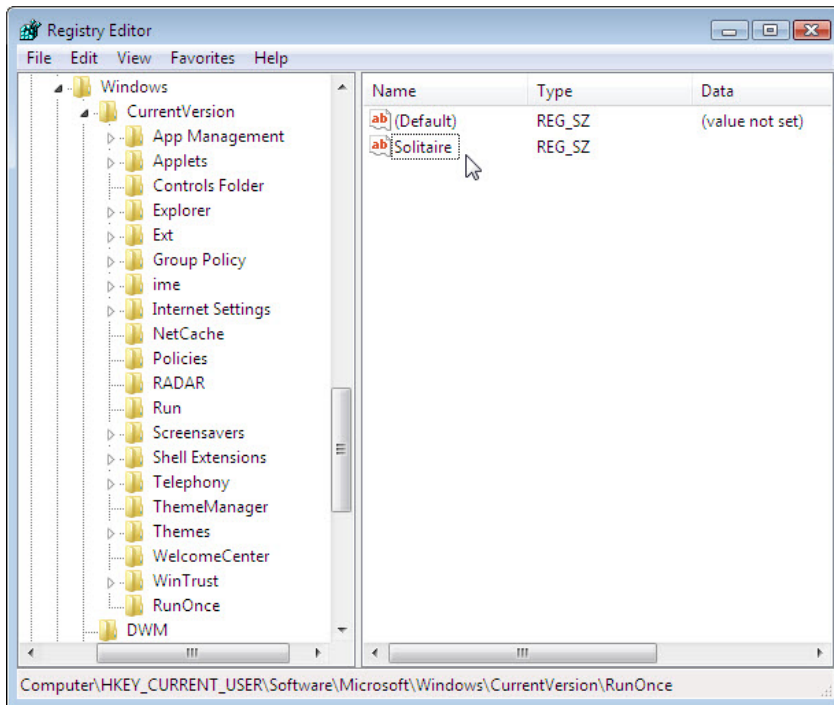
Right-click anywhere in the white space on the right side of the window.



Hover over **New** and select **String Value**.

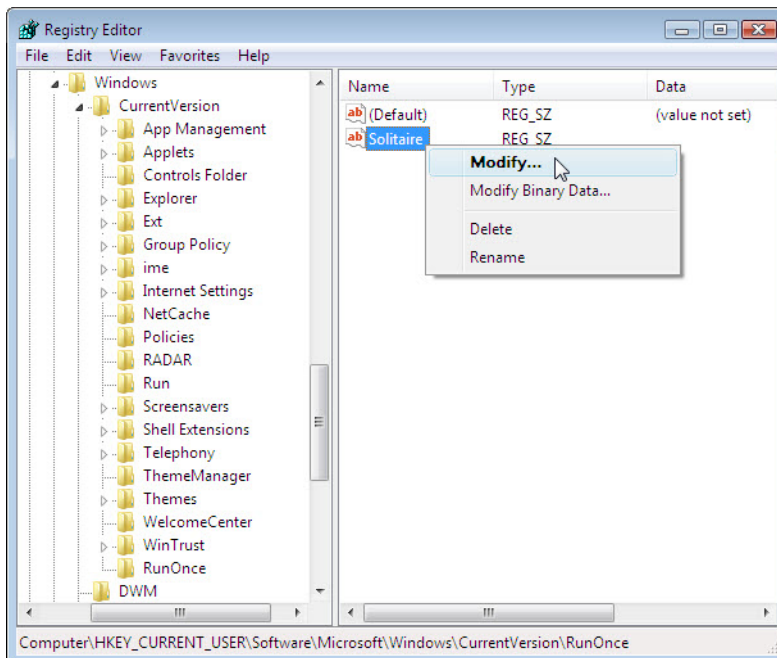
Click anywhere in the white space of the window.

A new "String Value" is created.

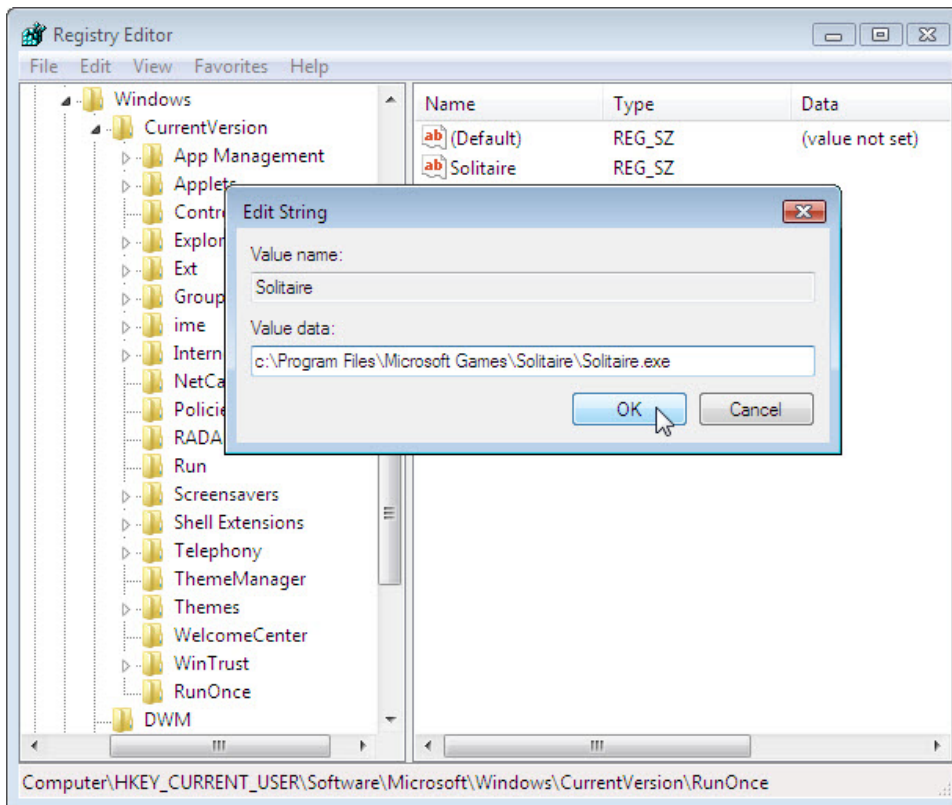


Right-click **New Value #1** > **Rename**.

Type **Solitaire** and press **Enter**.

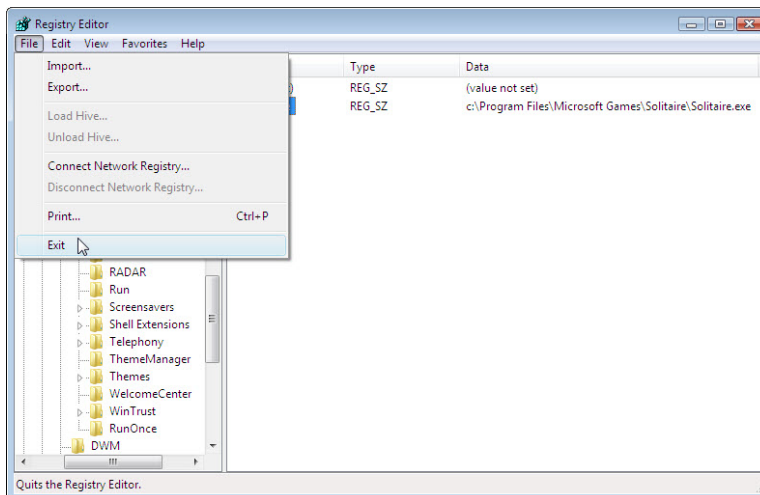


Right-click **Solitaire** > **Modify**.



Type **C:\Program Files\Microsoft Games\Solitaire\Solitaire.exe** in the "Value data" field.

Click **OK**.



Close the Registry Editor window.

Step 5

Log off Windows.

Log on to Windows as an Administrator.



What happens when you log in?

Close all open Windows.

Remove FreeCell game from Startup.

Click **Start > All Programs > Startup > right-click FreeCell > Delete > Yes.**