

IT Essentials 5.0

5.5.1.4 Lab - Managing the Startup Folder in Windows XP

Introduction

Print and complete this lab.

In this lab, you will customize the Startup Folder and the RunOnce Key in the Registry.

Recommended Equipment

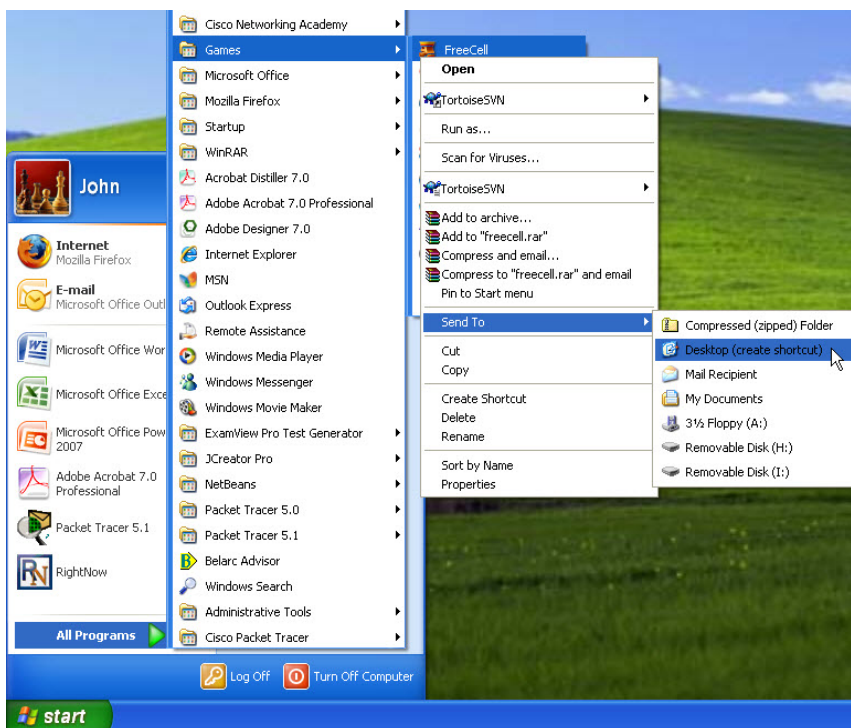
The following equipment is required for this exercise:

- A computer running Windows XP Professional

Step 1

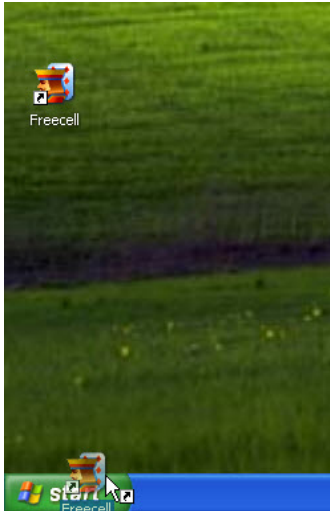
Log on to Windows as an administrator.

Choose **Start > All Programs > Games > right-click FreeCell > Send To > Desktop (create shortcut)**.



Step 2

Click and drag the **Freecell** to the **Start** button.

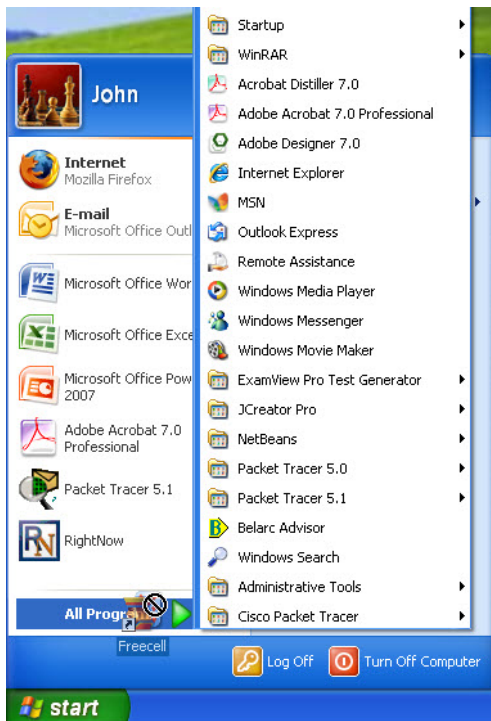


The “Start” menu appears.

Do not release the shortcut icon.

Drag the icon to **All Programs**.

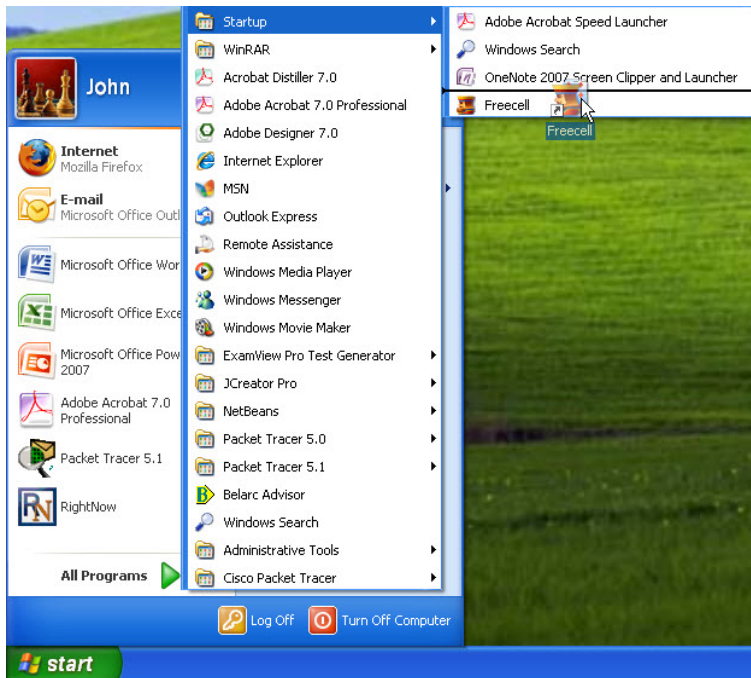
The “All Programs” menu appears.



Drag the icon to **Startup**.

The “Startup” menu appears.

Drag the icon to the **Startup** menu.



Release the icon.

Step 3

Log off Windows.

Log on to Windows as an administrator.

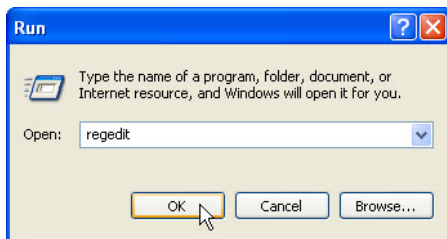
What happens when you log in?

Close the Freecell application.

Step 4

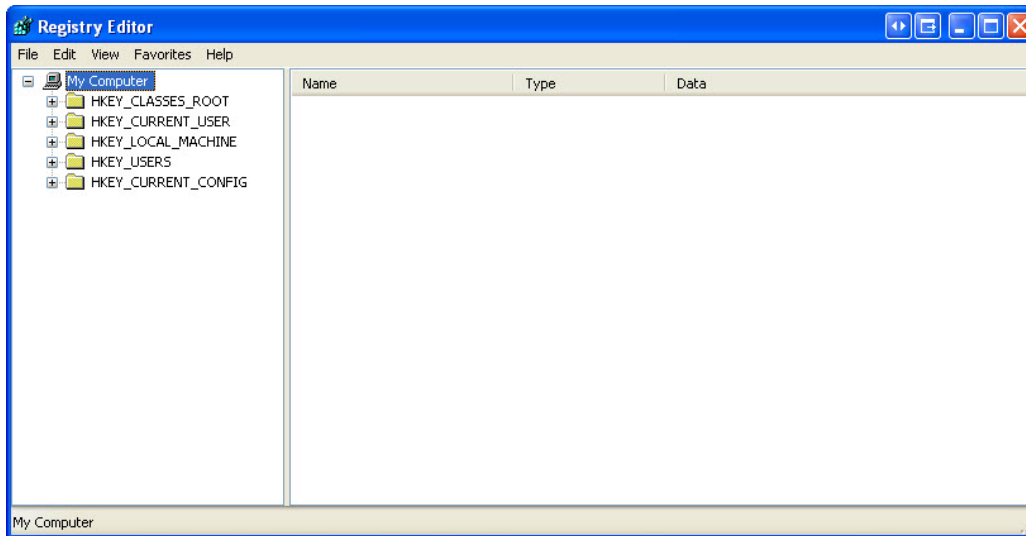
Choose **Start > Run**.

Type **regedit** in the **Open:** field > **OK**.



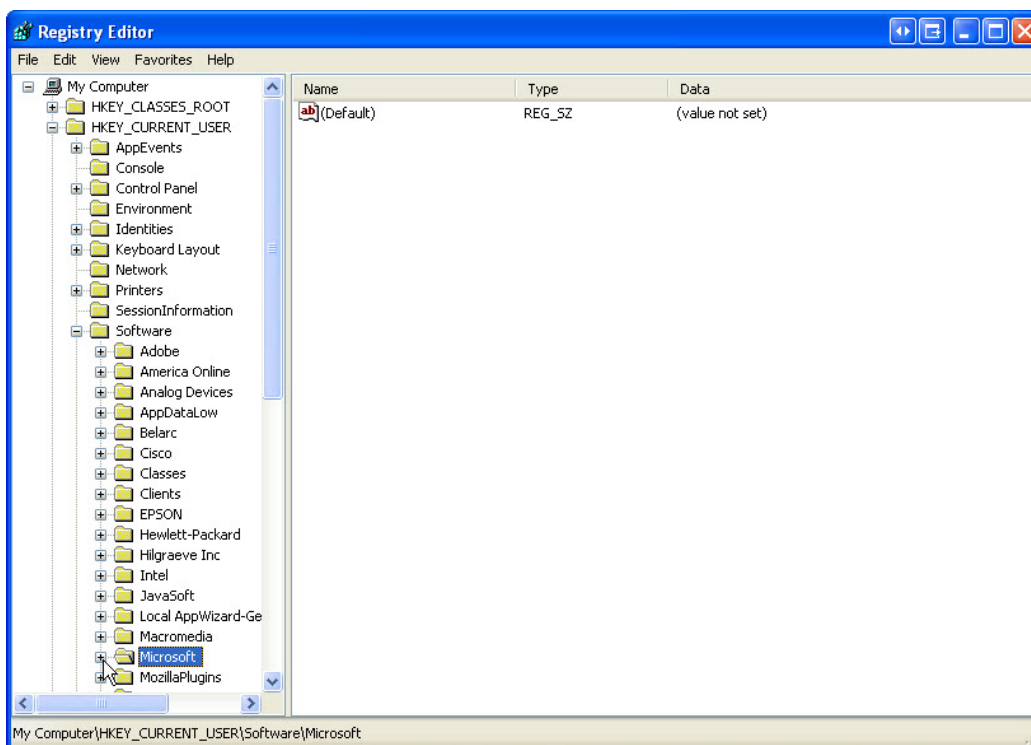
CAUTION: Incorrect changes to the registry can cause system errors and/or system instability.

The "Registry Editor" window opens.



Expand the **HKEY_CURRENT_USER** Key.

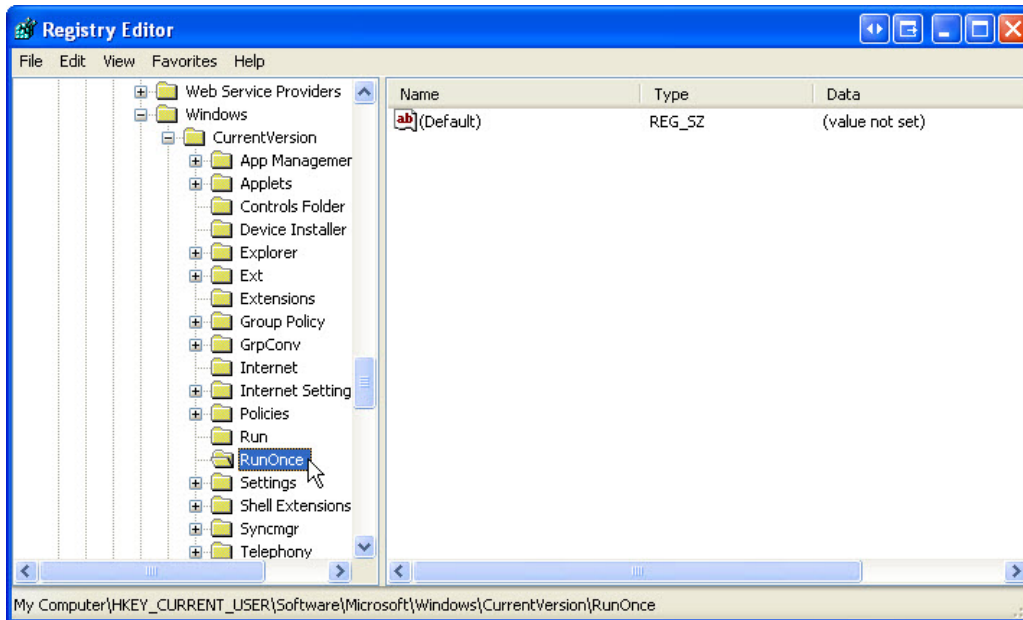
Expand the **Software** Key.



Expand the **Microsoft** Key.

Expand the **Windows** Key.

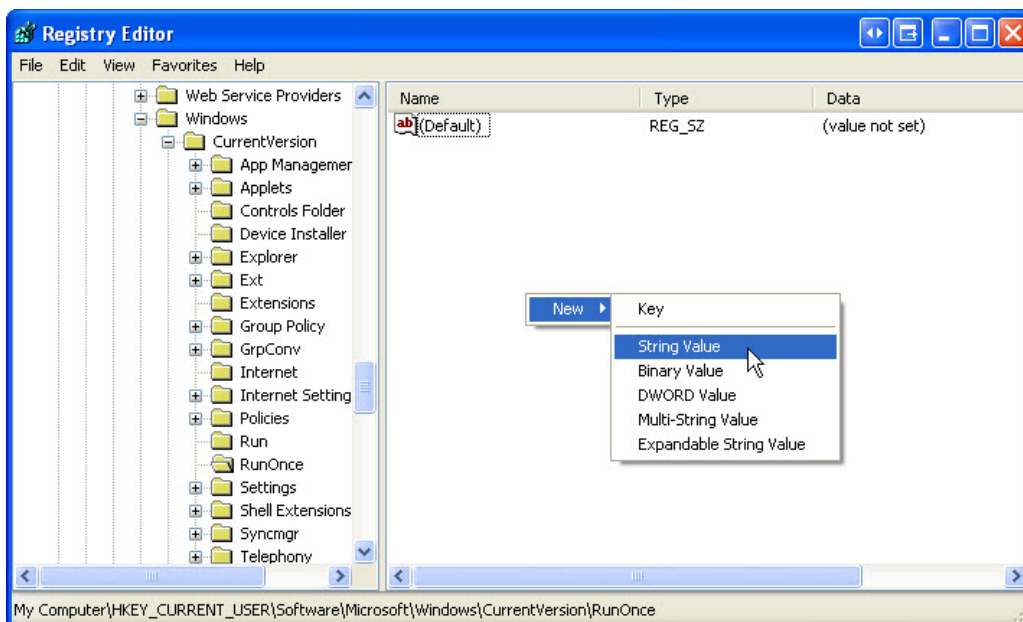
Expand the **CurrentVersion** Key.



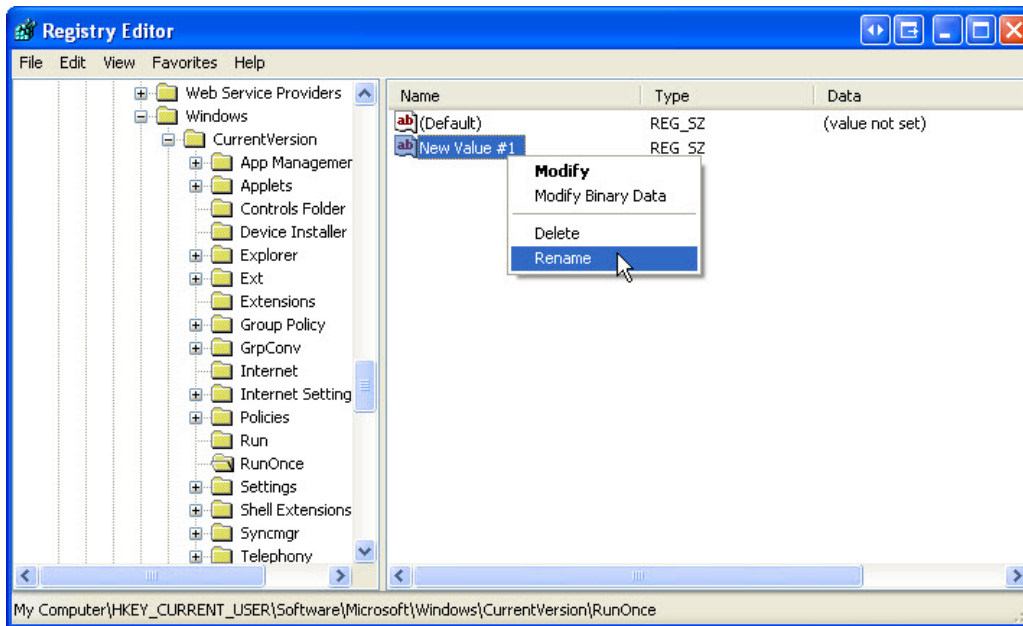
Select the **RunOnce** Key.

Right-click anywhere in the white space of the window.

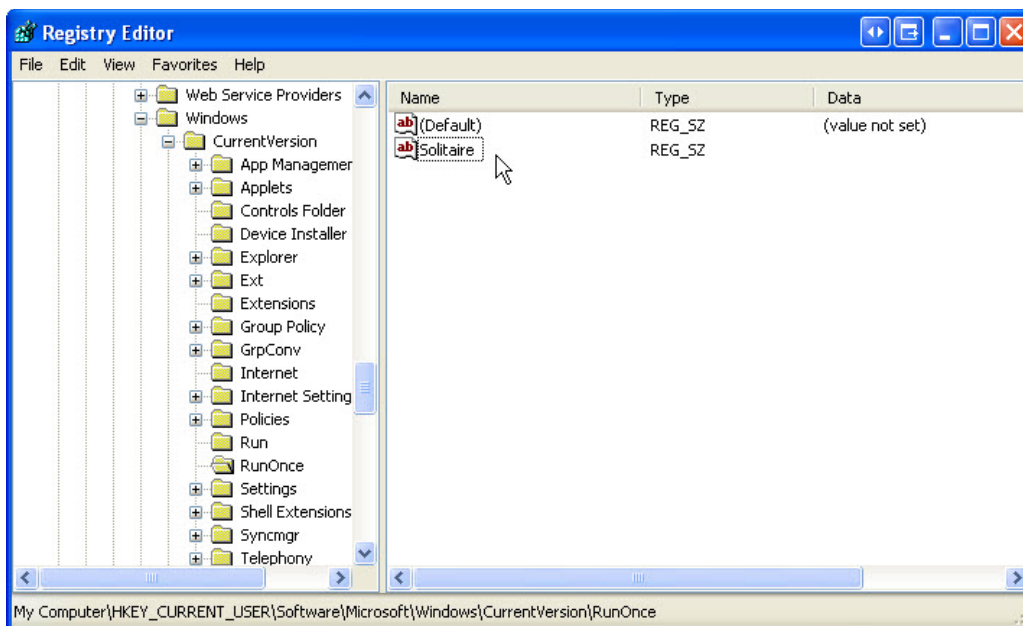
Hover over **New** and then select **String Value**.



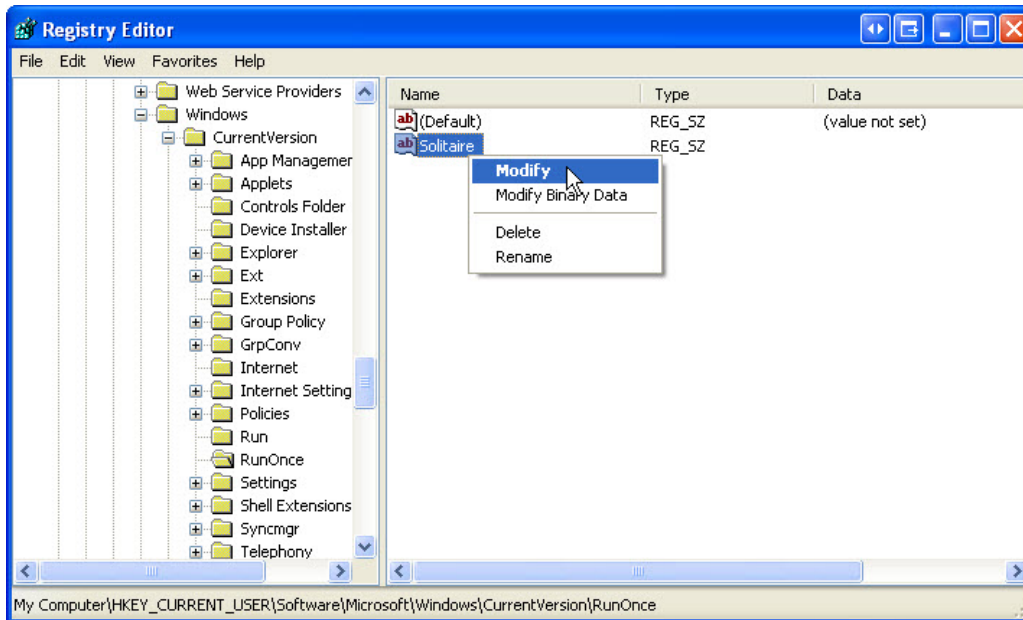
A new "String Value" is created.



Right-click **New Value #1** and then choose **Rename**.

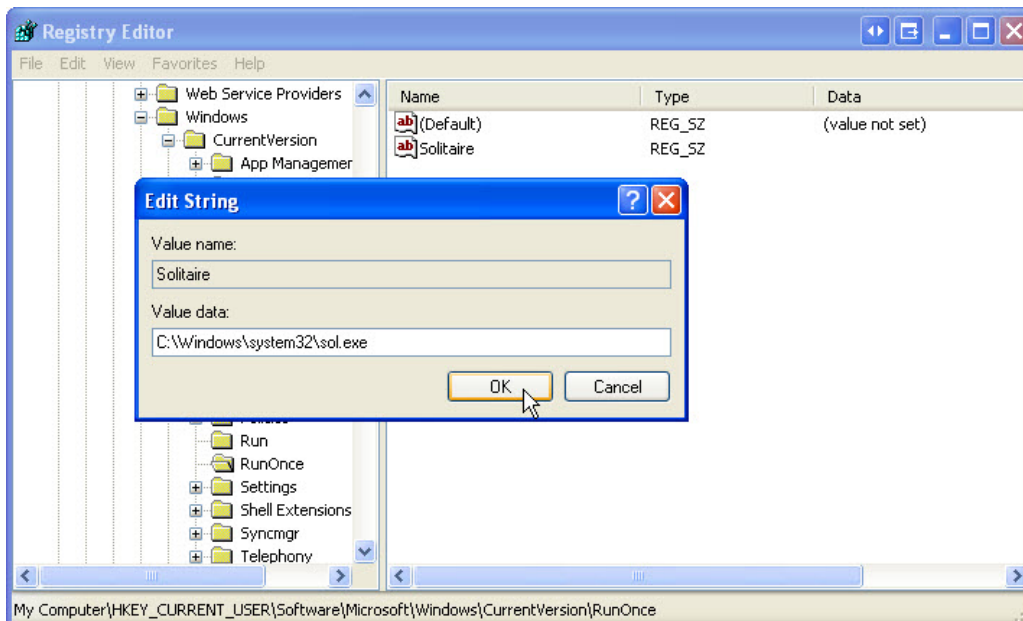


Type **Solitaire** and then press **Enter**.



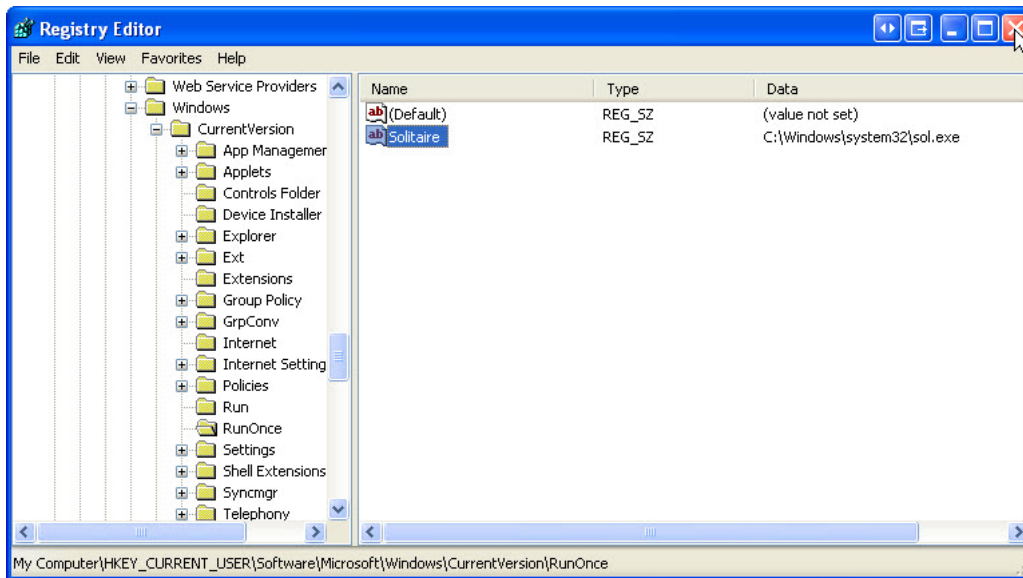
Right-click **Solitaire** and then choose **Modify**.

The “Edit String” window opens.



Type **C:\Windows\system32\sol.exe** in the “Value data” field.

Click **OK**.

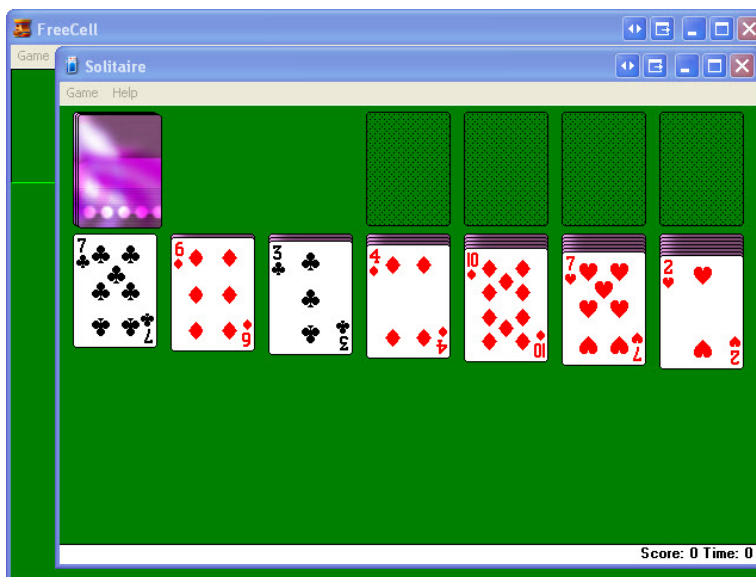


Close the Registry Editor window.

Step 5

Log off Windows.

Log on to Windows as an administrator.



What happens when you log in?

Close all open Windows.

Remove FreeCell game from Startup.

Click **Start > All Programs > Startup > right-click FreeCell > Delete > Delete Shortcut.**