

IT Essentials 5.0

9.4.2.4 Lab - Share a Printer in Windows Vista

Introduction

Print and complete this lab.

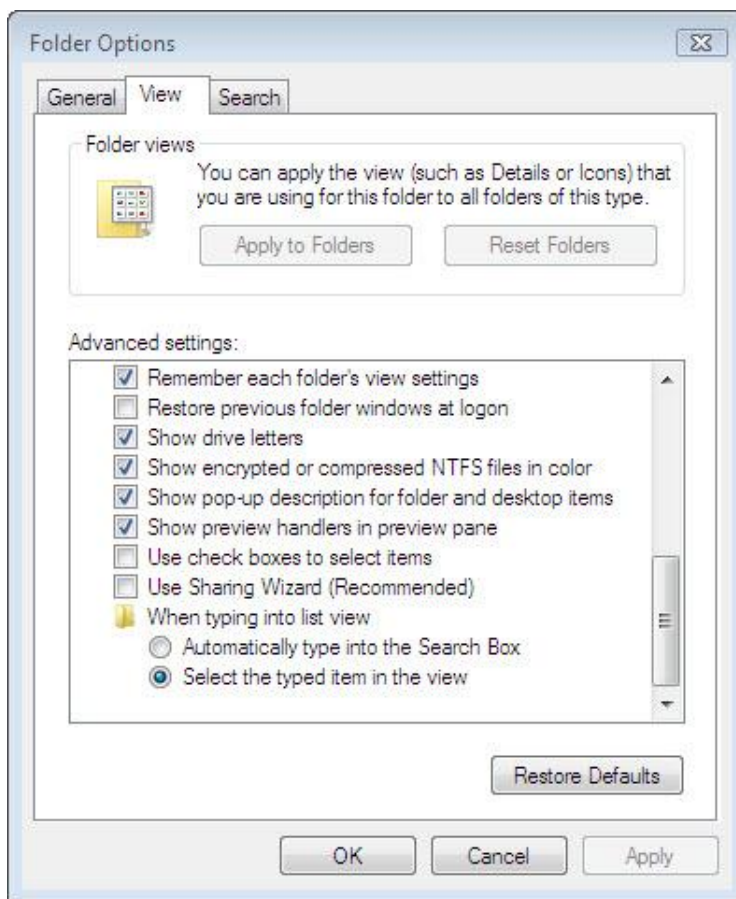
In this lab, you will share a printer, configure the printer on a networked computer, and print a test page from the remote computer.

Recommended Equipment

- Two computers directly connected or connected through a hub or switch
- Windows Vista installed on both computers
- A printer installed on one of the computers

Step 1

Log on to the computer with the printer connected click **Start > Computer > Tools > Folder Options > View** tab.

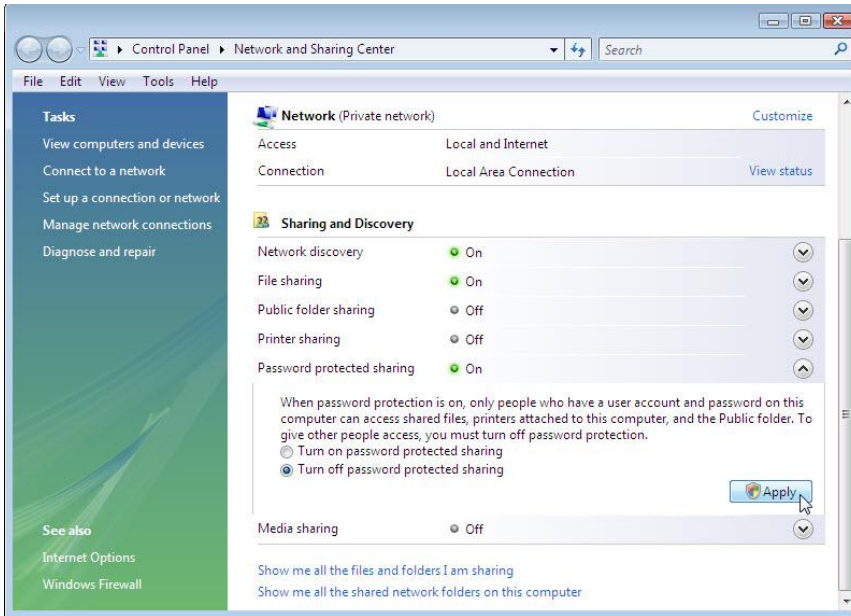


Uncheck **Use Sharing Wizard (Recommended)** if it is checked.

Click **OK**.

Step 2

Click **Start > Control Panel > Network and Sharing Center > Password protected sharing**.



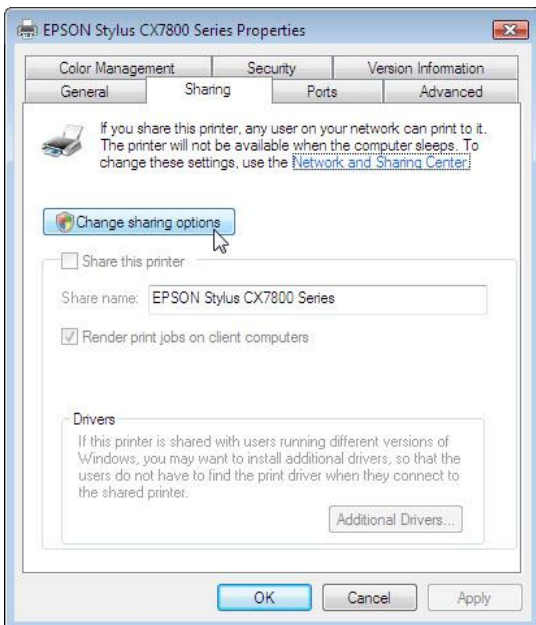
Check **Turn off password protected sharing**.

Click **Apply**. If User Account Control appears, click **Continue**.

Step 3

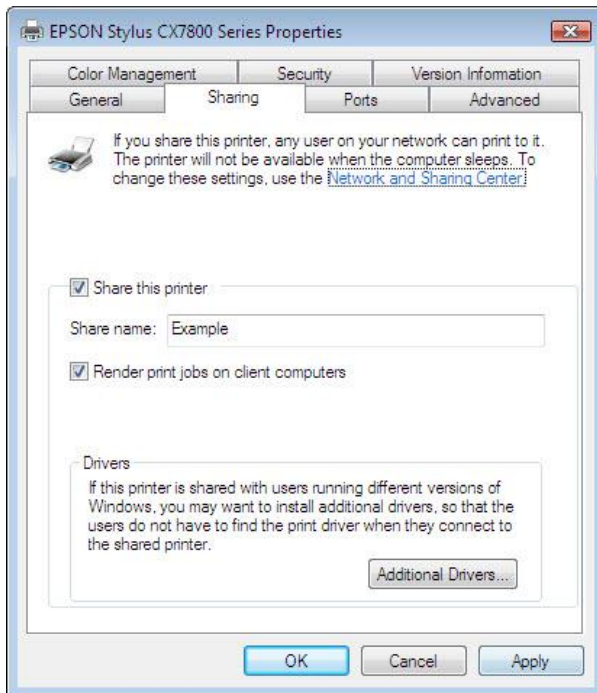
Click **Start > Control Panel > double click Printers**.

Right-click the printer, and then select **Properties > Sharing** tab.



Click **Change sharing options**. If User Account Control appears, click **Continue**.

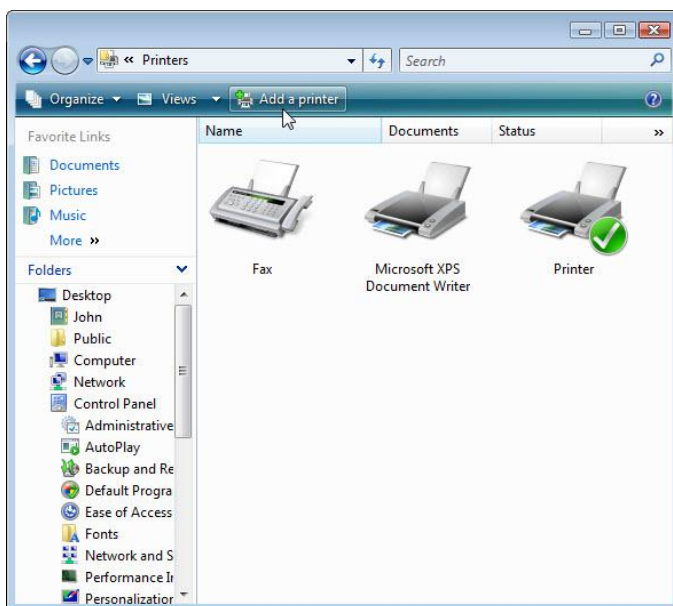
Select **Share this printer**.



Name the new share **Example**, and then click **OK**.

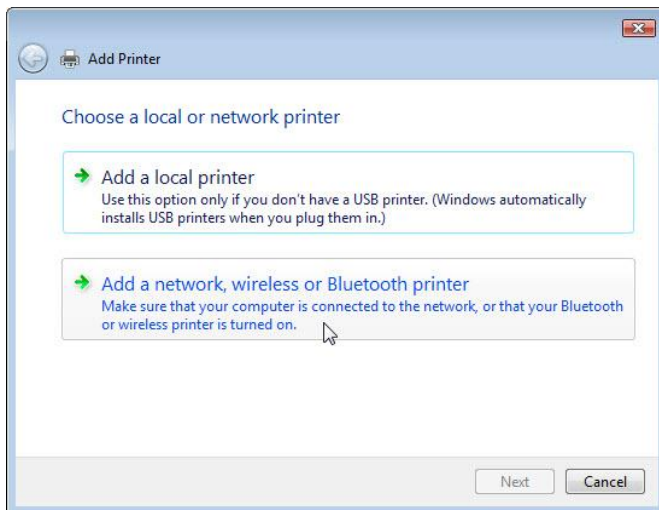
Step 4

Log on to the computer without the printer connected, and then click **Start > Control Panel > Printers**.



Click **Add a printer**.

The “Add Printer” window opens.

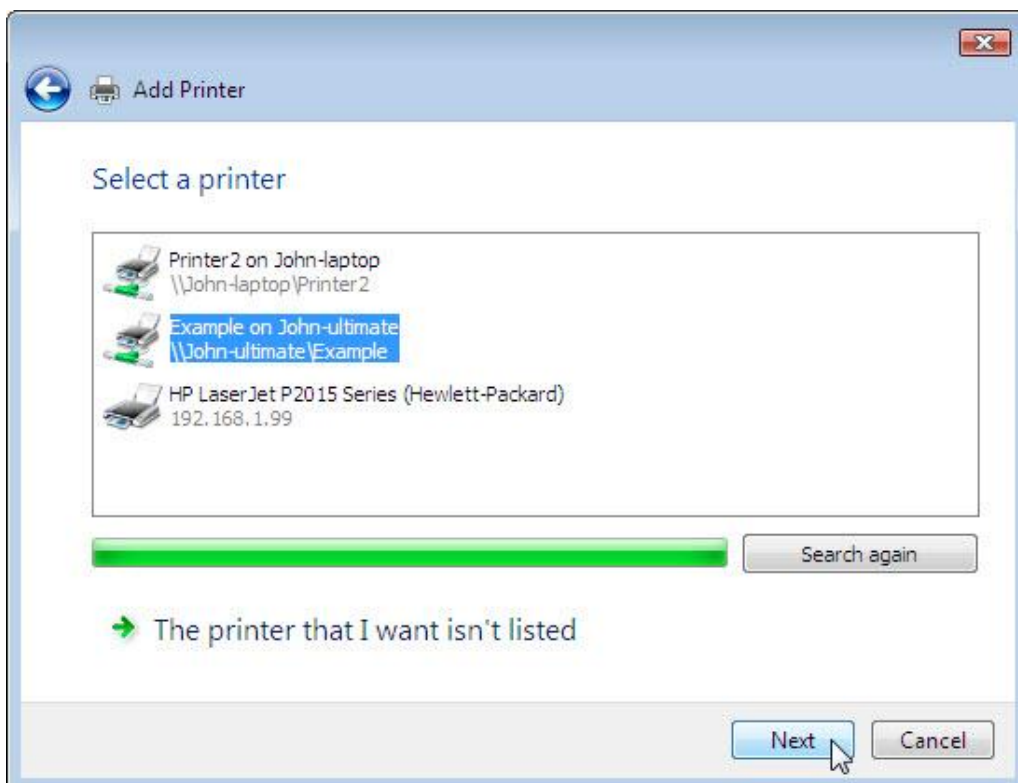


Click **Add a network, wireless or Bluetooth printer**.

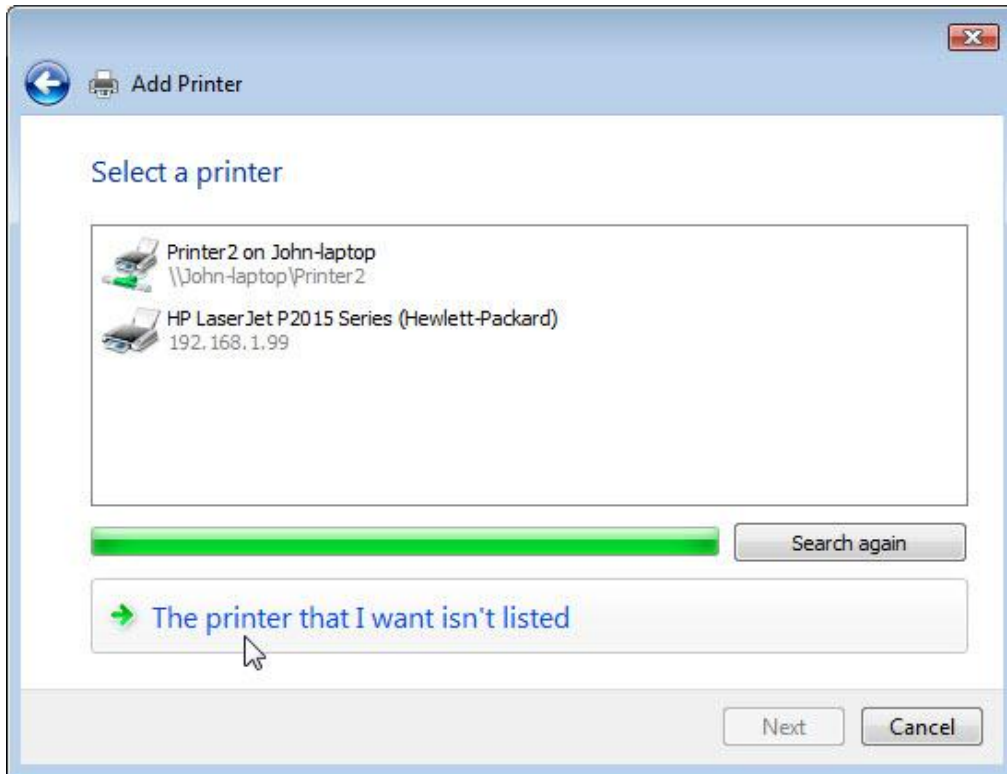
The “Searching for available Printers” screen appears.

When all printers are discovered, the “Select a printer” screen appears.

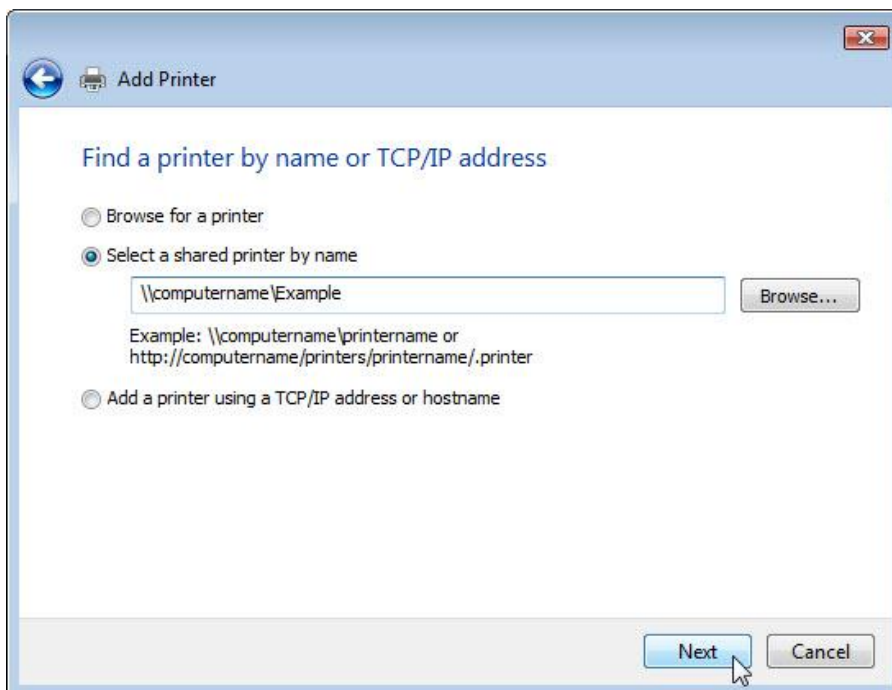
If displayed in the search list select **Printer on Computername** and then click **Next**.



Or to find a printer by name or TCP/IP address, select **The printer that I want isn't listed**.

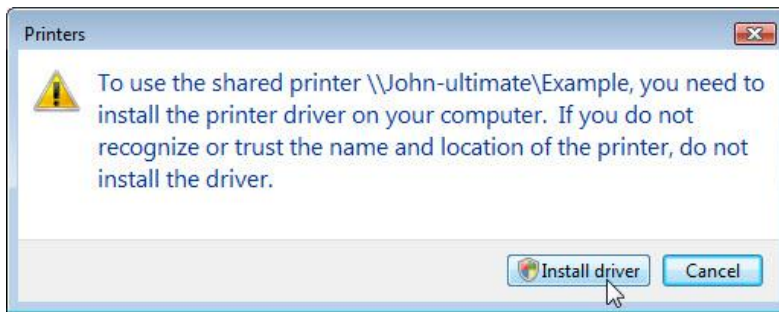


Select the radio button **Select a shared printer by name** and type `\\computername\printer`, where `computername` is the name of the computer with the connected printer and `printer` is the name of the printer.



Click **Next**.

If prompted to install drivers click **Install driver**. If User Account Control appears, click **Continue**.

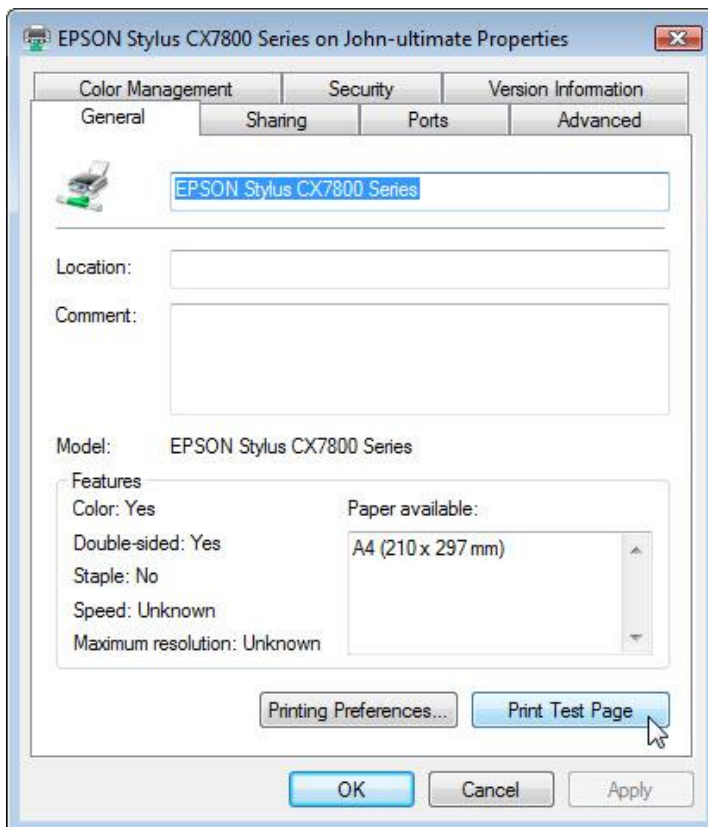


Accept all default settings, click **Next** and then click **Finish**.

Step 5

Click **Start > Control Panel >** double click **Printers**.

Right-click the printer, and then select **Properties**.



Click **Print Test Page**.